

Converting Colors

HunterLab(39.9473, 5.4031,
10.8466)

Have a look what the booklet for
HunterLab(39.9473, 5.4031,
10.8466) contains.

HunterLab(39.9483, 5.1787, 11.0040)	3
<i>Conversions</i>	4
<i>Details</i>	6
<i>Harmonies</i>	12
<i>Previews</i>	24
<i>Color Blindness Simulation</i>	28
<i>CSS Examples</i>	31

Color

**HunterLab(39.9483, 5.1787,
11.0040)**

Conversions

Conversions Part 1

Format	Color
Hex	876958
RGB	135, 105, 88
RGB Percent	53%, 41%, 35%
CMY	0.4706, 0.5882, 0.6549
CMYK	0.00, 0.22, 0.35, 0.47
HSL	22°, 21%, 44%
HSV	22°, 35%, 53%
XYZ	16.8047, 15.9587, 11.4271
YIQ	112.0320, 23.3370, 1.0730

Conversions

Conversions Part 2

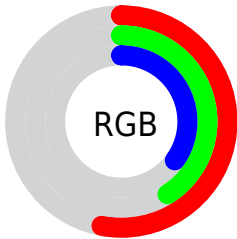
Format	Color
R_{YB}	135, 115, 88
Decimal	8874328
CIE _{Lab}	46.92, 9.42, 14.15
CIE _{LCh}	47, 16.995, 56.337
Yxy	15.9594, 0.3803, 0.3611
Android (android.graphics.Color)	4287064408 (0xFF876958)
YUV	112.0320, -11.8478, 20.1429
Hunter-Lab	39.9483, 5.1787, 11.0040

Details

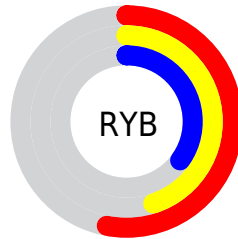
The HunterLab color **39.9483, 5.1787, 11.0040** is a dark color, and the websafe version is hex **996666**. A complement of this color would be **40.9638, -6.8647, -8.0549**, and the grayscale version is **40.3036, -2.1505, 2.1898**.

A 20% lighter version of the original color is **60.3579, 5.1629, 13.6633**, and **22.5346, 4.8208, 8.2068** is the 20% darker color. If you saturate the color by 10%, you get **37.5350, 7.8492, 12.8925**, and if you desaturate by 10%, it is **42.4846, 2.7072, 8.8640**.

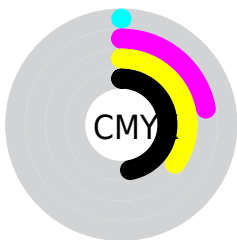
Distribution



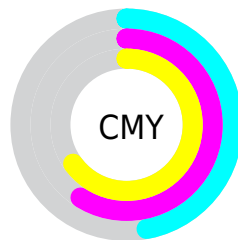
- Red (53%)
- Green (41%)
- Blue (35%)



- Red (53%)
- Yellow (45%)
- Blue (35%)



- Cyan (0%)
- Magenta (22%)
- Yellow (35%)
- Black (47%)



- Cyan (47%)
- Magenta (59%)
- Yellow (65%)

Brightness & Saturation Gradients

These gradients show how the HunterLab color 39.9483, 5.1787, 11.0040 changes by changing the brightness by 10 percent. The first figure shows a shift by +10% for each color and the second figure -10%.

Similar to the brightness gradients but the following saturation gradients show a change of the HunterLab color 39.9483, 5.1787, 11.0040 by changing the saturation by 10% instead.

■ 39.9483, 5.1787,
11.0040

■ 39.9483, 5.1787,
11.0040

151.3612, 3.0842,
23.1375

■ 30.8147, 5.1025,
9.5691

■ 60.4382, 5.0954,
13.7629

■ 22.5072, 4.9332,
8.0660

■ 71.6944, 4.9570,
15.1115

■ 15.1191, 4.6478,
6.4527

■ 83.5738, 4.7623,
16.4504

■ 8.7534, 4.3332,
6.1274

■ 96.0453, 4.5159,
17.7846

0.0000, NaN, NaN

0.0000, NaN, NaN

■ 109.0820, 4.2219,
19.1178

0.0000, NaN, NaN

122.6604, 3.8836,

0.0000, NaN, NaN

136.7597, 3.5035,
21.7924

■ 39.9483, 5.1787,
11.0040

■ 39.9483, 5.1787,
11.0040

■ 37.5350, 7.8492,
12.8925

■ 42.4846, 2.7072,
8.8640

■ 35.2559, 10.7281,
14.4876

■ 45.1285, 0.4284,
6.5057

■ 33.1279, 13.8086,
15.7465

■ 47.8702, -1.6732,
3.9595

■ 31.1680, 17.0694,
16.6255

■ 50.7002, -3.6131,
1.2506

■ 29.3940, 20.4664,
17.0882

■ 53.6104, -5.4062,
-1.6004

■ 27.8218, 23.9212,
17.1340

■ 56.5936, -7.0673,
-4.5761

■ 27.0815, 25.6599,
17.1367

■ 59.6438, -8.6096,
-7.6623

■ 62.7557, -10.0456,
-10.8472

■ 65.9246, -11.3862,
-14.1208

Harmonies

Analogous

The Analogous color harmony consists of three colors that are next to each other on the color wheel.



39.9492, 9.9386, 7.1869



39.9483, 5.1787, 11.0040



39.9492, -1.3165, 12.4780

Triad

The Triadic color harmony groups three colors that are evenly spaced from another and form a triangle on the color wheel.



39.9492, 5.1771, 11.0046



39.9492, -14.0707, 2.9411



39.9492, 3.6777, -10.2845

Complementary

The Complementary color scheme is a pair of colors which are on the opposite of each other on the color wheel.



39.9483, 5.1787, 11.0040



40.9638, -6.8647, -8.0549

Split Complementary

Split-complementary colors differ from the complementary color scheme. The scheme consists of three colors, the original color and two neighbors of the complement color.



39.9492, -2.9445, -11.9111



39.9483, 5.1787, 11.0040



39.9492, -12.9235, -3.5853

Square

The Square scheme is like the rectangle color scheme, but the four colors are evenly spaced on the color wheel.



39.9492, 5.1771, 11.0046



39.9492, -12.1953, 8.3266



39.9492, -8.9540, -9.2863



39.9492, 9.0340, -5.1443

Rectangle

The Rectangle color scheme consists of four colors that form a rectangle on the color wheel.



39.9483, 5.1787, 11.0040



39.9492, -5.6550, 12.1449



39.9492, -8.9540, -9.2863



39.9492, 1.5139, -11.2930

Sweetspot

The Sweet Spot groups the original color and five complimentary colors.



39.9492, 5.1771, 11.0046



62.0601, -0.7459, 7.1710



36.6765, 17.5035, -5.0790



29.6502, -0.1920, 3.6503



83.1908, -4.4389, 4.5199



31.6988, -1.6914, 1.7223

Same Dimension

The Same Dimension uses a secret algorithm to generate beautiful new colors.



39.9492, 5.1771, 11.0046



50.8218, 9.8128, 16.8076



46.1312, -5.4084, 16.4648



22.2355, -0.3767, 2.4174



26.0511, 24.5193, 16.4818



1.9100, 0.5763, 1.1870

Inverse Universe

The Inverse Universe completely reimagines the original color for something new.



40.9638, -6.8647, -8.0549



52.4630, -9.8177, -14.2344



34.6664, 3.6692, -17.7776



22.3674, -1.9250, -0.0368



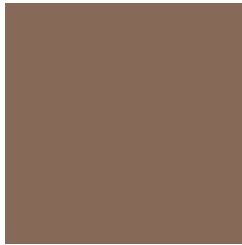
27.9284, -3.3294, -27.7207



2.0228, -0.7483, -0.9129

Previews

White Background



This preview shows how the HunterLab color 39.9483, 5.1787, 11.0040 looks on a white background.

Color Contrast Check

Large Text (above 18pt) WCAG AA ✓ Pass

Any Text WCAG AA ✓ Pass

Large Text (above 18pt) WCAG AAA ✓ Pass

Any Text WCAG AAA × Fail

Black Background



This preview shows how the HunterLab color 39.9483, 5.1787, 11.0040 looks on a black background.

Color Contrast Check

Large Text (above 18pt) WCAG AA ✓ Pass

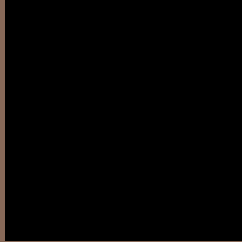
Any Text WCAG AA × Fail

Large Text (above 18pt) WCAG AAA × Fail

Any Text WCAG AAA × Fail

If you want to check with other color combinations, try the [Color Contrast Checker](#).

HunterLab 39.9483, 5.1787, 11.0040 Background



This preview shows how black text looks on a background with the HunterLab color 39.9483, 5.1787, 11.0040.

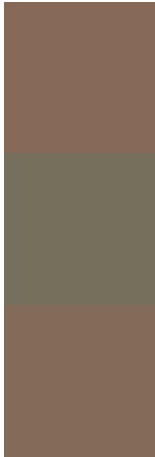


This preview shows how white text looks on a background with the HunterLab color 39.9483, 5.1787,

Color Blindness Simulation

Color vision deficiency is a very complex topic, and I could not describe the different causes any better than Wikipedia does, so if you want to learn more, you should check out their [article about color blindness](#).

Dichromacy



Original Color

39.9483, 5.1787, 11.0040

Protanopia

39.9697, -2.7623, 9.8990

Deuteranopia

39.9572, 2.5567, 10.9667



Tritanopia

39.9336, 10.0491, 2.8805

Trichromacy



Original Color

39.9483, 5.1787, 11.0040

Protanomaly

39.9507, -0.0952, 10.2604

Deuteranomaly

39.8976, 3.6917, 10.9293

Tritanomaly

39.8673, 8.1464, 6.0142

Monochromacy



Original Color

39.9483, 5.1787, 11.0040

Achromatopsia

40.2529, -2.1478, 2.1870

Achromatomaly

39.8869, 0.2904, 5.5091

CSS Examples

Text

The CSS property to change the color of the text to HunterLab 39.9483, 5.1787, 11.0040 is called "color". The color property can be set on classes, ids or directly on the HTML element.

This example shows how text in the color `rgb(135, 105, 88)` looks like.

```
.text, #text, p{  
    color:rgb(135, 105, 88)  
}
```

If you want to add a text shadow in that color use the text-shadow property, you can generate a text shadow directly with our [CSS Text Shadow Generator](#).

Here you see how black text with a 4 pixel rgb(135, 105, 88) colored shadow looks like.

```
.shadow{ text-shadow: 4px 4px 2px rgb(135, 105, 88) }
```

Border

The CSS property to change the border of an element to HunterLab 39.9483, 5.1787, 11.0040 is called "border". The border property can be set on classes, ids or directly on the HTML element.

This example shows the color as border, it can be applied via the CSS property "border" or "border-color".

```
.border, #border, table{ border:4px solid rgb(135, 105, 88) }
```


If only the border color should be changed use the property `border-color`.

```
.border{ border-color:rgb(135, 105, 88) }
```

If you want to add a box shadow in that color use:

Here you see how a box with a 4 pixel `rgb(135, 105, 88)` colored shadow looks like.

```
.boxshadow{ -moz-box-shadow:4px 4px 4px  
4px rgb(135, 105, 88); -webkit-box-  
shadow:4px 4px 4px 4px rgb(135, 105, 88);  
box-shadow:4px 4px 4px 4px rgb(135, 105,  
88) }
```

Background

The CSS property to change the background color of an element to HunterLab 39.9483, 5.1787, 11.0040 is called "background". The background property can be set on classes, ids or directly on the HTML element.

```
.background, #background, body{  
background: rgb(135, 105, 88) }
```

If only the background color should be changed can be used:

```
.background{ background-color: rgb(135,  
105, 88) }
```

This example shows the color as background, it is applied via the CSS property "background".

To optimize and compress your CSS code, you can use our [online CSS compressor and optimizer](#) based on csstidy. If you want to create a linear or radial gradient as background or border, check our [CSS Gradient Generator](#).

Hey! You found this booklet interesting? Support Converting Colors with the new Membership Option!

The pro membership hides all ads, plus gives you double the colors in the color bucket, and more awesome pro features!

[Learn more, Memberships starting at \\$2.50/m!](#)

**Follow me
on Twitter!**

@ConvertingColor