

Converting Colors

HunterLab(39.9937, 3.9693,
5.0799)

Have a look what the booklet for
HunterLab(39.9937, 3.9693, 5.0799)
contains.

HunterLab(40.1553, 4.0063, 5.0806)	3
<i>Conversions</i>	4
<i>Details</i>	6
<i>Harmonies</i>	12
<i>Previews</i>	24
<i>Color Blindness Simulation</i>	28
<i>CSS Examples</i>	31

Color

**HunterLab(40.1553, 4.0063,
5.0806)**

Conversions

Conversions Part 1

Format	Color
Hex	806B69
RGB	128, 107, 105
RGB Percent	50%, 42%, 41%
CMY	0.4980, 0.5804, 0.5882
CMYK	0.00, 0.16, 0.18, 0.50
HSL	5°, 10%, 46%
HSV	5°, 18%, 50%
XYZ	16.7096, 16.1245, 15.5962
YIQ	113.0510, 13.1580, 3.8300

Conversions

Conversions Part 2

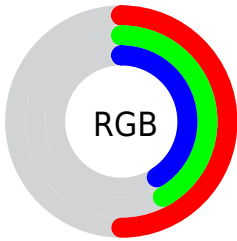
Format	Color
R_{YB}	128, 107, 105
Decimal	8416105
CIE Lab	47.14, 7.95, 4.21
CIE LCh	47, 9.001, 27.914
Yxy	16.1252, 0.3450, 0.3329
Android (android.graphics.Color)	4286606185 (0xFF806B69)
YUV	113.0510, -3.9691, 13.1103
Hunter-Lab	40.1553, 4.0063, 5.0806

Details

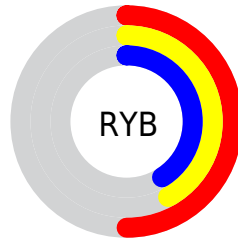
The HunterLab color $40.1553, 4.0063, 5.0806$ is a dark color, and the websafe version is hex 666666 . A complement of this color would be $44.1396, -7.7576, -0.3691$, and the grayscale version is $40.6680, -2.1699, 2.2096$.

A 20% lighter version of the original color is $60.5622, 3.9055, 6.5947$, and $22.7088, 3.6604, 3.6058$ is the 20% darker color. If you saturate the color by 10%, you get $36.8879, 7.8546, 6.5194$, and if you desaturate by 10%, it is $43.6030, 0.3307, 3.6522$.

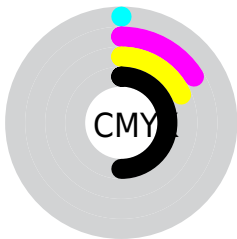
Distribution



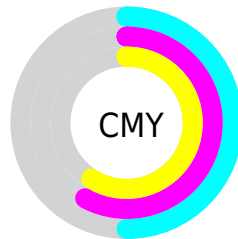
- Red (50%)
- Green (42%)
- Blue (41%)



- Red (50%)
- Yellow (42%)
- Blue (41%)



- Cyan (0%)
- Magenta (16%)
- Yellow (18%)
- Black (50%)



- Cyan (50%)
- Magenta (58%)
- Yellow (59%)

Brightness & Saturation Gradients

These gradients show how the HunterLab color 40.1553, 4.0063, 5.0806 changes by changing the brightness by 10 percent. The first figure shows a shift by +10% for each color and the second figure -10%.

Similar to the brightness gradients but the following saturation gradients show a change of the HunterLab color 40.1553, 4.0063, 5.0806 by changing the saturation by 10% instead.

40.1553, 4.0063,
5.0806

40.1553, 4.0063,
5.0806

151.6837, 1.3140,
12.8706

31.0045, 4.0166,
4.3244

60.6757, 3.7671,
6.6567

22.6782, 3.9405,
3.5845

71.9458, 3.5572,
7.4775

15.2689, 3.7575,
2.8552

83.8384, 3.2942,
8.3208

8.8896, 3.5103,
2.4488

96.3225, 2.9827,
9.1866

0.0000, NaN, NaN

0.0000, NaN, NaN

109.3712, 2.6262,
10.0747

0.0000, NaN, NaN

122.9611, 2.2276,

0.0000, NaN, NaN

10.9849

0.0000, NaN, NaN

137.0714, 1.7895,
11.9170

■ 40.1553, 4.0063,
5.0806

■ 40.1553, 4.0063,
5.0806

■ 36.8879, 7.8546,
6.5194

■ 43.6030, 0.3307,
3.6522

■ 33.8279, 11.8780,
7.9531

■ 47.2040, -3.1797,
2.2385

■ 31.0120, 16.0491,
9.3579

■ 50.9396, -6.5430,
0.8421

■ 28.4829, 20.2995,
10.6926

■ 54.7939, -9.7775,
-0.5374

■ 26.2879, 24.4987,
11.8958

■ 58.7537, -12.9010,
-1.9013

■ 24.4751, 28.4393,
12.8874

■ 62.8084, -15.9295,
-3.2518

■ 23.0843, 31.8493,
13.5825

■ 66.9490, -18.8774,
-4.5909

■ 22.1273, 34.4204,
14.0373

■ 71.1681, -21.7571,
-5.9209

■ 21.9816, 34.8070,
14.1543

■ 75.4594, -24.5792,
-7.2436

Harmonies

Analogous

The Analogous color harmony consists of three colors that are next to each other on the color wheel.



40.1562, 4.8365, 1.9510



40.1553, 4.0063, 5.0806



40.1562, 1.5095, 7.2614

Triad

The Triadic color harmony groups three colors that are evenly spaced from another and form a triangle on the color wheel.



40.1562, 4.0050, 5.0813



40.1562, -7.7132, 5.4539



40.1562, -2.3905, -4.7862

Complementary

The Complementary color scheme is a pair of colors which are on the opposite of each other on the color wheel.



40.1553, 4.0063, 5.0806



44.1396, -7.7576, -0.3691

Split Complementary

Split-complementary colors differ from the complementary color scheme. The scheme consists of three colors, the original color and two neighbors of the complement color.



40.1562, -5.6729, -3.6532



40.1553, 4.0063, 5.0806



40.1562, -8.6795, 2.4192

Square

The Square scheme is like the rectangle color scheme, but the four colors are evenly spaced on the color wheel.



40.1562, 4.0050, 5.0813



40.1562, -5.2607, 7.4632



40.1562, -7.9454, -0.9427



40.1562, 1.0692, -3.9219

Rectangle

The Rectangle color scheme consists of four colors that form a rectangle on the color wheel.



40.1553, 4.0063, 5.0806



40.1562, -0.7195, 7.9792



40.1562, -7.9454, -0.9427



40.1562, -3.5504, -4.6244

Sweetspot

The Sweet Spot groups the original color and five complimentary colors.



40.1562, 4.0050, 5.0813



59.2002, -0.9116, 4.3086



40.2505, 8.1675, -4.1721



28.5097, -0.3064, 2.1386



80.9895, -4.3214, 4.4003



29.8298, -1.5916, 1.6207

Same Dimension

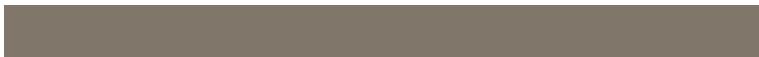
The Same Dimension uses a secret algorithm to generate beautiful new colors.



40.1562, 4.0050, 5.0813



51.2836, 7.6029, 7.6075



43.2025, -1.3175, 8.2565



20.9758, 0.3574, 1.8509



21.8910, 34.6520, 14.0958

0.0000, NaN, NaN

Inverse Universe

The Inverse Universe completely reimagines the original color for something new.



44.1396, -7.7576, -0.3691



57.8596, -11.8538, -1.3999



40.9006, -2.5972, -4.4470



21.9656, -2.5586, 0.4983

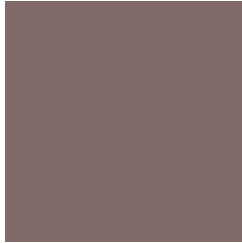


37.5879, -17.5541, -9.0875

0.0000, NaN, NaN

Previews

White Background



This preview shows how the HunterLab color 40.1553, 4.0063, 5.0806 looks on a white background.

Color Contrast Check

Large Text (above 18pt) WCAG AA ✓ Pass

Any Text WCAG AA ✓ Pass

Large Text (above 18pt) WCAG AAA ✓ Pass

Any Text WCAG AAA × Fail

Black Background



This preview shows how the HunterLab color 40.1553, 4.0063, 5.0806 looks on a black background.

Color Contrast Check

Large Text (above 18pt) WCAG AA ✓ Pass

Any Text WCAG AA × Fail

Large Text (above 18pt) WCAG AAA × Fail

Any Text WCAG AAA × Fail

If you want to check with other color combinations, try the [Color Contrast Checker](#).

HunterLab 40.1553, 4.0063, 5.0806 Background



This preview shows how black text looks on a background with the HunterLab color 40.1553, 4.0063, 5.0806.



This preview shows how white text looks on a background with the HunterLab color 40.1553, 4.0063,

Color Blindness Simulation

Color vision deficiency is a very complex topic, and I could not describe the different causes any better than Wikipedia does, so if you want to learn more, you should check out their [article about color blindness](#).

Dichromacy



Original Color

40.1553, 4.0063, 5.0806

Protanopia

40.0940, -1.5651, 4.1086

Deuteranopia

40.1311, 2.5824, 5.0288



Tritanopia

40.2369, 6.0861, 1.4425

Trichromacy



Original Color

40.1553, 4.0063, 5.0806

Protanomaly

40.2313, 0.2440, 4.6993

Deuteranomaly

40.2252, 2.8984, 5.1385

Tritanomaly

40.1533, 5.6448, 2.6348

Monochromacy



Original Color

40.1553, 4.0063, 5.0806

Achromatopsia

40.6365, -2.1683, 2.2079

Achromatomaly

40.4305, -0.2454, 3.2756

CSS Examples

Text

The CSS property to change the color of the text to HunterLab 40.1553, 4.0063, 5.0806 is called "color". The color property can be set on classes, ids or directly on the HTML element.

This example shows how text in the color `rgb(128, 107, 105)` looks like.

```
.text, #text, p{  
    color:rgb(128, 107, 105)  
}
```

If you want to add a text shadow in that color use the text-shadow property, you can generate a text shadow directly with our [CSS Text Shadow Generator](#).

Here you see how black text with a 4 pixel rgb(128, 107, 105) colored shadow looks like.

```
.shadow{ text-shadow: 4px 4px 2px rgb(128, 107, 105) }
```

Border

The CSS property to change the border of an element to HunterLab 40.1553, 4.0063, 5.0806 is called "border". The border property can be set on classes, ids or directly on the HTML element.

This example shows the color as border, it can be applied via the CSS property "border" or "border-color".

```
.border, #border, table{ border:4px solid rgb(128, 107, 105) }
```


If only the border color should be changed use the property `border-color`.

```
.border{ border-color:rgb(128, 107, 105) }
```

If you want to add a box shadow in that color use:

Here you see how a box with a 4 pixel `rgb(128, 107, 105)` colored shadow looks like.

```
.boxshadow{ -moz-box-shadow:4px 4px 4px  
4px rgb(128, 107, 105); -webkit-box-  
shadow:4px 4px 4px 4px rgb(128, 107, 105);  
box-shadow:4px 4px 4px 4px rgb(128, 107,  
105) }
```

Background

The CSS property to change the background color of an element to HunterLab 40.1553, 4.0063, 5.0806 is called "background". The background property can be set on classes, ids or directly on the HTML element.

```
.background, #background, body{  
background: rgb(128, 107, 105) }
```

If only the background color should be changed can be used:

```
.background{ background-color: rgb(128,  
107, 105) }
```

This example shows the color as background, it is applied via the CSS property "background".

To optimize and compress your CSS code, you can use our [online CSS compressor and optimizer](#) based on csstidy. If you want to create a linear or radial gradient as background or border, check our [CSS Gradient Generator](#).

Hey! You found this booklet interesting? Support Converting Colors with the new Membership Option!

The pro membership hides all ads, plus gives you double the colors in the color bucket, and more awesome pro features!

[Learn more, Memberships starting at \\$2.50/m!](#)

**Follow me
on Twitter!**

@ConvertingColor