

Converting Colors

HunterLab(40.0610, 51.4543,
0.5416)

Have a look what the booklet for
HunterLab(40.0610, 51.4543,
0.5416) contains.

HunterLab(40.0180, 51.6532, 0.6287)	3
<i>Conversions</i>	4
<i>Details</i>	6
<i>Harmonies</i>	12
<i>Previews</i>	24
<i>Color Blindness Simulation</i>	28
<i>CSS Examples</i>	31

Color

**HunterLab(40.0180, 51.6532,
0.6287)**

Conversions

Conversions Part 1

Format	Color
Hex	C33B75
RGB	195, 59, 117
RGB Percent	76%, 23%, 46%
CMY	0.2353, 0.7686, 0.5412
CMYK	0.00, 0.70, 0.40, 0.24
HSL	334°, 54%, 50%
HSV	334°, 70%, 76%
XYZ	27.2806, 16.0144, 18.4829
YIQ	106.2760, 62.4380, 46.8700

Conversions

Conversions Part 2

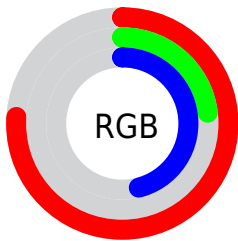
Format	Color
R_{YB}	195, 59, 117
Decimal	12794741
CIE Lab	46.99, 58.29, -2.13
CIE LCh	47, 58.331, 357.909
Yxy	16.0153, 0.4416, 0.2592
Android (android.graphics.Color)	4290984821 (0xFFC33B75)
YUV	106.2760, 5.2869, 77.8109
Hunter-Lab	40.0180, 51.6532, 0.6287

Details

The HunterLab color **40.0180, 51.6532, 0.6287** is a dark color, and the websafe version is hex **CC3366**. The color can be described as dark muted rose. A complement of this color would be **64.6271, -41.7407, 17.3770**, and the grayscale version is **38.0345, -2.0294, 2.0665**.

A 20% lighter version of the original color is **60.5106, 55.3088, 1.4757**, and **23.7990, 42.5618, 1.3834** is the 20% darker color. If you saturate the color by 10%, you get **37.5813, 56.9648, 2.7215**, and if you desaturate by 10%, it is **43.2282, 44.8205, -0.6759**.

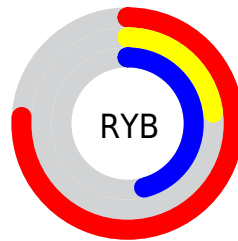
Distribution



Red (76%)

Green (23%)

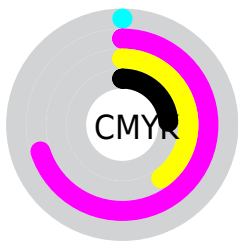
Blue (46%)



Red (76%)

Yellow (23%)

Blue (46%)

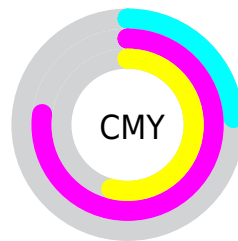


Cyan (0%)

Magenta (70%)

Yellow (40%)

Black (24%)



Cyan (24%)

Magenta (77%)

Yellow (54%)

Brightness & Saturation Gradients

These gradients show how the HunterLab color 40.0180, 51.6532, 0.6287 changes by changing the brightness by 10 percent. The first figure shows a shift by +10% for each color and the second figure -10%.

Similar to the brightness gradients but the following saturation gradients show a change of the HunterLab color 40.0180, 51.6532, 0.6287 by changing the saturation by 10% instead.

■ 40.0180, 51.6532,
0.6287

■ 40.0180, 51.6532,
0.6287

151.4701, 66.2580,
5.8592

■ 30.8787, 49.5638,
0.2553

■ 60.5184, 55.5824,
1.5251

■ 22.5649, 47.4750,
-0.0627

■ 71.7793, 57.3968,
2.0374

■ 15.1697, 45.5801,
-0.3149

■ 83.6632, 59.1079,
2.5889

■ 8.7996, 44.7552,
-0.5252

■ 96.1389, 60.7190,
3.1770

0.0000, INF, NaN

0.0000, INF, NaN

■ 109.1796, 62.2346,
3.7996

0.0000, NaN, NaN

122.7619, 63.6598,

0.0000, NaN, NaN

4.4552

0.0000, NaN, NaN

136.8649, 64.9994,
5.1422

■ 40.0180, 51.6532,
0.6287

■ 40.0180, 51.6532,
0.6287

■ 37.5813, 56.9648,
2.7215

■ 43.2282, 44.8205,
-0.6759

■ 35.9475, 60.2619,
5.4936

■ 47.1317, 37.0508,
-1.2145

■ 34.9923, 61.6488,
8.6214

■ 51.6366, 28.8146,
-1.0772

■ 34.9700, 61.6800,
8.6999

■ 56.6526, 20.4329,
-0.3794

■ 62.1001, 12.0925,
0.7687

■ 67.9127, 3.8866,
2.2743

■ 74.0364, -4.1490,
4.0634

■ 80.4281, -12.0103,
6.0794

■ 87.0528, -19.7092,
8.2791

Harmonies

Analogous

The Analogous color harmony consists of three colors that are next to each other on the color wheel.



40.0191, 42.0903, -26.8450



40.0180, 51.6532, 0.6287



40.0191, 44.3355, 17.1744

Triad

The Triadic color harmony groups three colors that are evenly spaced from another and form a triangle on the color wheel.



40.0191, 51.6500, 0.6298



40.0191, -20.6285, 24.2663



40.0191, -22.8318, -51.5659

Complementary

The Complementary color scheme is a pair of colors which are on the opposite of each other on the color wheel.



40.0180, 51.6532, 0.6287



64.6271, -41.7407, 17.3770

Split Complementary

Split-complementary colors differ from the complementary color scheme. The scheme consists of three colors, the original color and two neighbors of the complement color.



40.0191, -33.9291, -22.6134



40.0180, 51.6532, 0.6287



40.0191, -32.8711, 18.5827

Square

The Square scheme is like the rectangle color scheme, but the four colors are evenly spaced on the color wheel.



40.0191, 51.6500, 0.6298



40.0191, -0.5285, 25.4442



40.0191, -37.1497, 3.6674



40.0191, -3.7214, -65.7384

Rectangle

The Rectangle color scheme consists of four colors that form a rectangle on the color wheel.



40.0180, 51.6532, 0.6287



40.0191, 31.6196, 22.3923



40.0191, -37.1497, 3.6674



40.0191, -27.4473, -42.6571

Sweetspot

The Sweet Spot groups the original color and five complimentary colors.



40.0191, 51.6500, 0.6298



81.9166, 17.9440, 0.7502



35.0843, 48.3936, -64.7847



37.3588, 9.8651, 0.1341

0.0000, NaN, NaN



46.2646, -2.4686, 2.5136

Same Dimension

The Same Dimension uses a secret algorithm to generate beautiful new colors.



40.0191, 51.6500, 0.6298



48.9465, 79.0524, 5.6109



40.0765, 42.8502, 19.3220



31.8553, 1.6746, 1.0924



28.2211, 49.8304, 6.6013



5.9824, 10.7812, -0.2907

Inverse Universe

The Inverse Universe completely reimagines the original color for something new.



40.0191, 51.6500, 0.6298



48.9465, 79.0524, 5.6109



63.2141, -28.1730, -9.9658



31.8553, 1.6746, 1.0924



28.2211, 49.8304, 6.6013



5.9824, 10.7812, -0.2907

Previews

White Background



This preview shows how the HunterLab color 40.0180, 51.6532, 0.6287 looks on a white background.

Color Contrast Check

Large Text (above 18pt) WCAG AA ✓ Pass

Any Text WCAG AA ✓ Pass

Large Text (above 18pt) WCAG AAA ✓ Pass

Any Text WCAG AAA × Fail

Black Background



This preview shows how the HunterLab color 40.0180, 51.6532, 0.6287 looks on a black background.

Color Contrast Check

Large Text (above 18pt) WCAG AA ✓ Pass

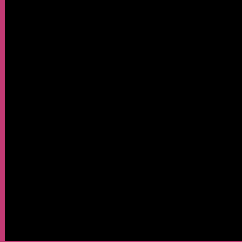
Any Text WCAG AA × Fail

Large Text (above 18pt) WCAG AAA × Fail

Any Text WCAG AAA × Fail

If you want to check with other color combinations, try the [Color Contrast Checker](#).

HunterLab 40.0180, 51.6532, 0.6287 Background



This preview shows how black text looks on a background with the HunterLab color 40.0180, 51.6532, 0.6287.



This preview shows how white text looks on a background with the HunterLab color 40.0180, 51.6532,

0.6287.

Color Blindness Simulation

Color vision deficiency is a very complex topic, and I could not describe the different causes any better than Wikipedia does, so if you want to learn more, you should check out their [article about color blindness](#).

Dichromacy



Original Color

40.0180, 51.6532, 0.6287

Protanopia

40.4198, 2.3805, -17.3767

Deuteranopia

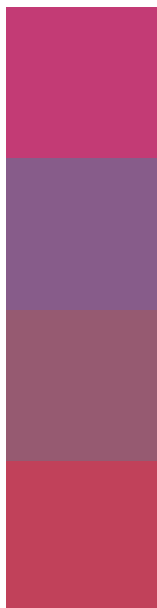
40.1696, 2.9755, 3.0308



Tritanopia

39.9464, 42.2636, 15.7389

Trichromacy



Original Color

40.0180, 51.6532, 0.6287

Protanomaly

38.2625, 18.9086, -13.3506

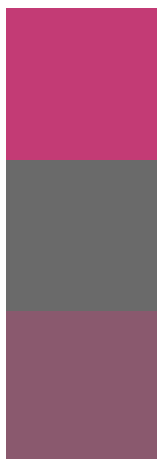
Deuteranomaly

38.7151, 20.8388, 0.2955

Tritanomaly

39.8199, 45.6461, 10.9335

Monochromacy



Original Color

40.0180, 51.6532, 0.6287

Achromatopsia

37.9643, -2.0257, 2.0627

Achromatomaly

36.9781, 16.7135, -0.5745

CSS Examples

Text

The CSS property to change the color of the text to HunterLab 40.0180, 51.6532, 0.6287 is called "color". The color property can be set on classes, ids or directly on the HTML element.

This example shows how text in the color `rgb(195, 59, 117)` looks like.

```
.text, #text, p{  
    color:rgb(195, 59, 117)  
}
```

If you want to add a text shadow in that color use the text-shadow property, you can generate a text shadow directly with our [CSS Text Shadow Generator](#).

Here you see how black text with a 4 pixel rgb(195, 59, 117) colored shadow looks like.

```
.shadow{ text-shadow: 4px 4px 2px rgb(195, 59, 117) }
```

Border

The CSS property to change the border of an element to HunterLab 40.0180, 51.6532, 0.6287 is called "border". The border property can be set on classes, ids or directly on the HTML element.

This example shows the color as border, it can be applied via the CSS property "border" or "border-color".

```
.border, #border, table{ border:4px solid rgb(195, 59, 117) }
```


If only the border color should be changed use the property border-color.

```
.border{ border-color:rgb(195, 59, 117) }
```

If you want to add a box shadow in that color use:

Here you see how a box with a 4 pixel rgb(195, 59, 117) colored shadow looks like.

```
.boxshadow{ -moz-box-shadow:4px 4px 4px  
4px rgb(195, 59, 117); -webkit-box-  
shadow:4px 4px 4px 4px rgb(195, 59, 117);  
box-shadow:4px 4px 4px 4px rgb(195, 59,  
117) }
```

Background

The CSS property to change the background color of an element to HunterLab 40.0180, 51.6532, 0.6287 is called "background". The background property can be set on classes, ids or directly on the HTML element.

```
.background, #background, body{  
background: rgb(195, 59, 117) }
```

If only the background color should be changed can be used:

```
.background{ background-color: rgb(195, 59,  
117) }
```

This example shows the color as background, it is applied via the CSS property "background".

To optimize and compress your CSS code, you can use our [online CSS compressor and optimizer](#) based on csstidy. If you want to create a linear or radial gradient as background or border, check our [CSS Gradient Generator](#).

Hey! You found this booklet interesting? Support Converting Colors with the new Membership Option!

The pro membership hides all ads, plus gives you double the colors in the color bucket, and more awesome pro features!

[Learn more, Memberships starting at \\$2.50/m!](#)

**Follow me
on Twitter!**

@ConvertingColor