

Converting Colors

HunterLab(40.4096, 53.7121,
1.5975)

Have a look what the booklet for
HunterLab(40.4096, 53.7121,
1.5975) contains.

| | |
|--|----|
| HunterLab(40.4096, 53.7121, 1.5975) | 3 |
| <i>Conversions</i> | 4 |
| <i>Details</i> | 6 |
| <i>Harmonies</i> | 12 |
| <i>Previews</i> | 24 |
| <i>Color Blindness Simulation</i> | 28 |
| <i>CSS Examples</i> | 31 |

Color

**HunterLab(40.4096, 53.7121,
1.5975)**

Conversions

Conversions Part 1

| Format | Color |
|---------------|----------------------------|
| Hex | C73974 |
| RGB | 199, 57, 116 |
| RGB Percent | 78%, 22%, 45% |
| CMY | 0.2196, 0.7764, 0.5451 |
| CMYK | 0.00, 0.71, 0.42, 0.22 |
| HSL | 335°, 56%, 50% |
| HSV | 335°, 71%, 78% |
| XYZ | 28.1688, 16.3294, 18.1903 |
| YIQ | 106.1840, 65.6930, 48.4530 |

Conversions

Conversions Part 2

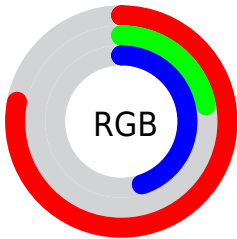
| Format | Color |
|-------------------------------------|------------------------------|
| R_{YB} | 199, 57, 116 |
| Decimal | 13056372 |
| CIE Lab | 47.40, 60.06, -0.83 |
| CIE LCh | 47, 60.071, 359.205 |
| Yxy | 16.3303, 0.4493, 0.2605 |
| Android (android.graphics.Color) | 4291246452 (0xFFC73974) |
| YUV | 106.1840, 4.8393, 81.3996 |
| Hunter-Lab | 40.4096, 53.7121, 1.5975 |

Details

The HunterLab color **40.4096, 53.7121, 1.5975** is a dark color, and the websafe version is hex **CC3366**. The color can be described as dark muted rose. A complement of this color would be **66.0384, -43.0043, 17.6611**, and the grayscale version is **38.0005, -2.0276, 2.0646**.

A 20% lighter version of the original color is **60.2898, 55.6692, 1.6934**, and **24.4802, 43.6279, 2.6031** is the 20% darker color. If you saturate the color by 10%, you get **38.0513, 58.8277, 3.9171**, and if you desaturate by 10%, it is **43.5730, 46.9431, 0.0549**.

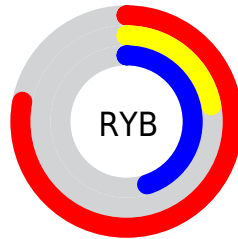
Distribution



Red (78%)

Green (22%)

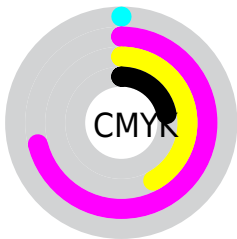
Blue (45%)



Red (78%)

Yellow (22%)

Blue (45%)

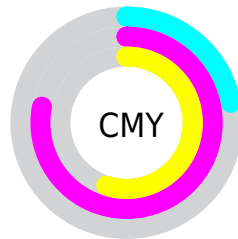


Cyan (0%)

Magenta (71%)

Yellow (42%)

Black (22%)



Cyan (22%)

Magenta (78%)

Yellow (55%)

Brightness & Saturation Gradients

These gradients show how the HunterLab color 40.4096, 53.7121, 1.5975 changes by changing the brightness by 10 percent. The first figure shows a shift by +10% for each color and the second figure -10%.

Similar to the brightness gradients but the following saturation gradients show a change of the HunterLab color 40.4096, 53.7121, 1.5975 by changing the saturation by 10% instead.

40.4096, 53.7121,
1.5975

40.4096, 53.7121,
1.5975

152.0798, 68.7712,
7.3474

31.2380, 51.5850,
1.1480

60.9677, 57.7342,
2.6305

22.8886, 49.4715,
0.7468

72.2548, 59.5993,
3.2053

15.4535, 47.5766,
0.4019

84.1636, 61.3621,
3.8159

9.0541, 46.6550,
0.1114

96.6630, 63.0254,
4.4605

0.0000, INF, NaN

0.0000, INF, NaN

109.7264, 64.5932,
5.1373

0.0000, NaN, NaN

123.3305, 66.0704,

0.0000, NaN, NaN

5.8448

0.0000, NaN, NaN

137.4544, 67.4615,
6.5819

■ 40.4096, 53.7121,
1.5975

■ 40.4096, 53.7121,
1.5975

■ 38.0513, 58.8277,
3.9171

■ 43.5730, 46.9431,
0.0549

■ 36.5174, 61.8211,
6.8696

■ 47.4638, 39.1250,
-0.7073

■ 35.7235, 62.9118,
9.6402

■ 51.9886, 30.7642,
-0.7667

■ 57.0527, 22.2149,
-0.2356

■ 62.5721, 13.6878,
0.7736

■ 68.4763, 5.2903,
2.1639

■ 74.7078, -2.9343,
3.8573

■ 81.2204, -10.9784,
5.7931

■ 87.9773, -18.8531,
7.9252

Harmonies

Analogous

The Analogous color harmony consists of three colors that are next to each other on the color wheel.



40.4107, 44.4700, -26.5926



40.4096, 53.7121, 1.5975



40.4107, 45.3585, 18.0604

Triad

The Triadic color harmony groups three colors that are evenly spaced from another and form a triangle on the color wheel.



40.4107, 53.7087, 1.5986



40.4107, -21.9363, 24.6118



40.4107, -22.7968, -54.9239

Complementary

The Complementary color scheme is a pair of colors which are on the opposite of each other on the color wheel.



40.4096, 53.7121, 1.5975



66.0384, -43.0043, 17.6611

Split Complementary

Split-complementary colors differ from the complementary color scheme. The scheme consists of three colors, the original color and two neighbors of the complement color.



40.4107, -34.5331, -24.9138



40.4096, 53.7121, 1.5975



40.4107, -34.1221, 18.6039

Square

The Square scheme is like the rectangle color scheme, but the four colors are evenly spaced on the color wheel.



40.4107, 53.7087, 1.5986



40.4107, -1.5294, 25.9015



40.4107, -38.1556, 2.7916



40.4107, -2.7835, -68.7563

Rectangle

The Rectangle color scheme consists of four colors that form a rectangle on the color wheel.



40.4096, 53.7121, 1.5975



40.4107, 31.8235, 23.0914



40.4107, -38.1556, 2.7916



40.4107, -27.6568, -45.7802

Sweetspot

The Sweet Spot groups the original color and five complimentary colors.



40.4107, 53.7087, 1.5986



82.8305, 18.0626, 1.0307



35.5134, 51.2453, -67.4281



37.3487, 9.8130, 0.2776

0.0000, NaN, NaN



46.2646, -2.4686, 2.5136

Same Dimension

The Same Dimension uses a secret algorithm to generate beautiful new colors.



40.4107, 53.7087, 1.5986



49.0215, 80.5462, 7.4107



40.8343, 43.9881, 20.3098



32.7243, 1.7167, 1.1627



28.6751, 50.5540, 7.3120



6.3538, 11.4163, -0.0438

Inverse Universe

The Inverse Universe completely reimagines the original color for something new.



40.4107, 53.7087, 1.5986



49.0215, 80.5462, 7.4107



63.7224, -28.0308, -11.4998



32.7243, 1.7167, 1.1627



28.6751, 50.5540, 7.3120



6.3538, 11.4163, -0.0438

Previews

White Background



This preview shows how the HunterLab color 40.4096, 53.7121, 1.5975 looks on a white background.

Color Contrast Check

Large Text (above 18pt) WCAG AA ✓ Pass

Any Text WCAG AA ✓ Pass

Large Text (above 18pt) WCAG AAA ✓ Pass

Any Text WCAG AAA × Fail

Black Background



This preview shows how the HunterLab color 40.4096, 53.7121, 1.5975 looks on a black background.

Color Contrast Check

Large Text (above 18pt) WCAG AA ✓ Pass

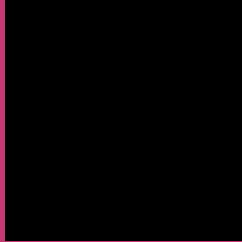
Any Text WCAG AA × Fail

Large Text (above 18pt) WCAG AAA × Fail

Any Text WCAG AAA × Fail

If you want to check with other color combinations, try the [Color Contrast Checker](#).

HunterLab 40.4096, 53.7121, 1.5975 Background



This preview shows how black text looks on a background with the HunterLab color 40.4096, 53.7121, 1.5975.



This preview shows how white text looks on a background with the HunterLab color 40.4096, 53.7121,

Color Blindness Simulation

Color vision deficiency is a very complex topic, and I could not describe the different causes any better than Wikipedia does, so if you want to learn more, you should check out their [article about color blindness](#).

Dichromacy



Original Color

40.4096, 53.7121, 1.5975

Protanopia

40.8337, 2.3856, -16.6926

Deuteranopia

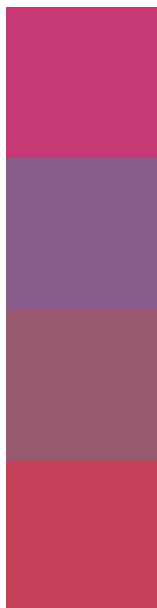
40.5919, 2.9867, 3.9323



Tritanopia

40.4202, 44.0915, 16.6856

Trichromacy



Original Color

40.4096, 53.7121, 1.5975

Protanomaly

38.5909, 19.8676, -12.8144

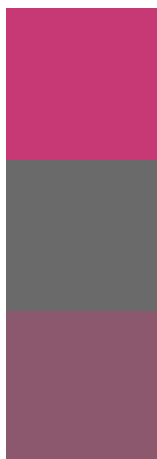
Deuteranomaly

39.0570, 21.7648, 1.1774

Tritanomaly

40.3010, 47.3814, 12.0801

Monochromacy



Original Color

40.4096, 53.7121, 1.5975

Achromatopsia

37.9643, -2.0257, 2.0627

Achromatomaly

36.9874, 17.8897, -0.5422

CSS Examples

Text

The CSS property to change the color of the text to HunterLab 40.4096, 53.7121, 1.5975 is called "color". The color property can be set on classes, ids or directly on the HTML element.

This example shows how text in the color `rgb(199, 57, 116)` looks like.

```
.text, #text, p{  
    color:rgb(199, 57, 116)  
}
```

If you want to add a text shadow in that color use the text-shadow property, you can generate a text shadow directly with our [CSS Text Shadow Generator](#).

Here you see how black text with a 4 pixel rgb(199, 57, 116) colored shadow looks like.

```
.shadow{ text-shadow: 4px 4px 2px rgb(199, 57, 116) }
```

Border

The CSS property to change the border of an element to HunterLab 40.4096, 53.7121, 1.5975 is called "border". The border property can be set on classes, ids or directly on the HTML element.

This example shows the color as border, it can be applied via the CSS property "border" or "border-color".

```
.border, #border, table{ border:4px solid rgb(199, 57, 116) }
```


If only the border color should be changed use the property `border-color`.

```
.border{ border-color:rgb(199, 57, 116) }
```

If you want to add a box shadow in that color use:

Here you see how a box with a 4 pixel `rgb(199, 57, 116)` colored shadow looks like.

```
.boxshadow{ -moz-box-shadow:4px 4px 4px  
4px rgb(199, 57, 116); -webkit-box-  
shadow:4px 4px 4px 4px rgb(199, 57, 116);  
box-shadow:4px 4px 4px 4px rgb(199, 57,  
116) }
```

Background

The CSS property to change the background color of an element to HunterLab 40.4096, 53.7121, 1.5975 is called "background". The background property can be set on classes, ids or directly on the HTML element.

```
.background, #background, body{  
background: rgb(199, 57, 116) }
```

If only the background color should be changed can be used:

```
.background{ background-color: rgb(199, 57,  
116) }
```

This example shows the color as background, it is applied via the CSS property "background".

To optimize and compress your CSS code, you can use our [online CSS compressor and optimizer](#) based on csstidy. If you want to create a linear or radial gradient as background or border, check our [CSS Gradient Generator](#).

Hey! You found this booklet interesting? Support Converting Colors with the new Membership Option!

The pro membership hides all ads, plus gives you double the colors in the color bucket, and more awesome pro features!

[Learn more, Memberships starting at \\$2.50/m!](#)

**Follow me
on Twitter!**

@ConvertingColor