

Converting Colors

HunterLab(40.4313, 55.7926,
4.6687)

Have a look what the booklet for
HunterLab(40.4313, 55.7926,
4.6687) contains.

HunterLab(40.4312, 55.7854, 4.6737)	3
<i>Conversions</i>	4
<i>Details</i>	6
<i>Harmonies</i>	12
<i>Previews</i>	24
<i>Color Blindness Simulation</i>	28
<i>CSS Examples</i>	31

Color

**HunterLab(40.4312, 55.7854,
4.6737)**

Conversions

Conversions Part 1

Format	Color
Hex	CB356D
RGB	203, 53, 109
RGB Percent	80%, 21%, 43%
CMY	0.2039, 0.7921, 0.5725
CMYK	0.00, 0.74, 0.46, 0.20
HSL	338°, 59%, 50%
HSV	338°, 74%, 80%
XYZ	28.6620, 16.3468, 16.1126
YIQ	104.2340, 71.4240, 49.2160

Conversions

Conversions Part 2

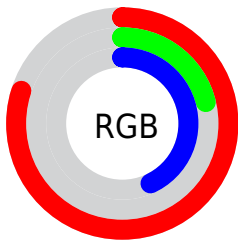
Format	Color
R_{YB}	203, 53, 109
Decimal	13317485
CIE _{Lab}	47.43, 61.90, 3.57
CIE _{LCh}	47, 62.005, 3.301
Yxy	16.3477, 0.4689, 0.2675
Android (android.graphics.Color)	4291507565 (0xFFCB356D)
YUV	104.2340, 2.3496, 86.6178
Hunter-Lab	40.4312, 55.7854, 4.6737

Details

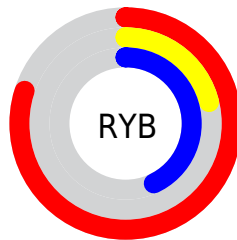
The HunterLab color **40.4312, 55.7854, 4.6737** is a dark color, and the websafe version is hex **CC3366**. The color can be described as dark muted rose. A complement of this color would be **67.5098, -43.8658, 16.5850**, and the grayscale version is **37.2692, -1.9886, 2.0249**.

A 20% lighter version of the original color is **59.4865, 56.0731, 4.4891**, and **24.8746, 43.9966, 5.2349** is the 20% darker color. If you saturate the color by 10%, you get **38.2333, 60.4939, 7.3529**, and if you desaturate by 10%, it is **43.4749, 49.2578, 2.6639**.

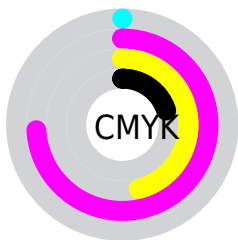
Distribution



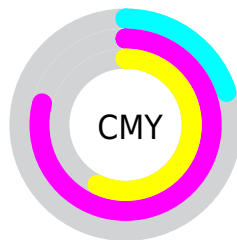
- Red (80%)
- Green (21%)
- Blue (43%)



- Red (80%)
- Yellow (21%)
- Blue (43%)



- Cyan (0%)
- Magenta (74%)
- Yellow (46%)
- Black (20%)



- Cyan (20%)
- Magenta (79%)
- Yellow (57%)

Brightness & Saturation Gradients

These gradients show how the HunterLab color 40.4312, 55.7854, 4.6737 changes by changing the brightness by 10 percent. The first figure shows a shift by +10% for each color and the second figure -10%.

Similar to the brightness gradients but the following saturation gradients show a change of the HunterLab color 40.4312, 55.7854, 4.6737 by changing the saturation by 10% instead.

40.4312, 55.7854,
4.6737

40.4312, 55.7854,
4.6737

152.1134, 71.3395,
12.2026

31.2579, 53.6199,
3.9580

60.9925, 59.9078,
6.1798

22.9065, 51.4872,
3.2630

72.2811, 61.8282,
6.9689

15.4692, 49.6136,
2.5853

84.1912, 63.6477,
7.7824

9.0679, 48.8128,
2.1256

96.6919, 65.3681,
8.6199

0.0000, INF, NaN

0.0000, INF, NaN

109.7566, 66.9930,
9.4811

0.0000, NaN, NaN

123.3618, 68.5269,

0.0000, NaN, NaN

10.3656

0.0000, NaN, NaN

137.4869, 69.9742,
11.2729

■ 40.4312, 55.7854,
4.6737

■ 40.4312, 55.7854,
4.6737

■ 38.2333, 60.4939,
7.3529

■ 43.4749, 49.2578,
2.6639

■ 36.8817, 62.9754,
10.4914

■ 47.2931, 41.5289,
1.3890

■ 36.3527, 63.6820,
12.4293

■ 51.7906, 33.1510,
0.8141

■ 56.8674, 24.5248,
0.8494

■ 62.4328, 15.8950,
1.3912

■ 68.4101, 7.3893,
2.3434

■ 74.7367, -0.9383,
3.6256

■ 81.3624, -9.0760,
5.1736

■ 88.2469, -17.0333,
6.9373

Harmonies

Analogous

The Analogous color harmony consists of three colors that are next to each other on the color wheel.



40.4323, 48.5555, -23.2608



40.4312, 55.7854, 4.6737



40.4323, 44.7108, 19.7762

Triad

The Triadic color harmony groups three colors that are evenly spaced from another and form a triangle on the color wheel.



40.4323, 55.7818, 4.6748



40.4323, -24.7261, 24.5016



40.4323, -21.0654, -60.9474

Complementary

The Complementary color scheme is a pair of colors which are on the opposite of each other on the color wheel.



40.4312, 55.7854, 4.6737



67.5098, -43.8658, 16.5850

Split Complementary

Split-complementary colors differ from the complementary color scheme. The scheme consists of three colors, the original color and two neighbors of the complement color.



40.4323, -34.2412, -30.5511



40.4312, 55.7854, 4.6737



40.4323, -35.9781, 17.4989

Square

The Square scheme is like the rectangle color scheme, but the four colors are evenly spaced on the color wheel.



40.4323, 55.7818, 4.6748



40.4323, -4.8120, 26.1696



40.4323, -39.0008, -0.4400



40.4323, 0.5631, -71.9476

Rectangle

The Rectangle color scheme consists of four colors that form a rectangle on the color wheel.



40.4312, 55.7854, 4.6737



40.4323, 29.6836, 24.0681



40.4323, -39.0008, -0.4400



40.4323, -26.4420, -52.0322

Sweetspot

The Sweet Spot groups the original color and five complimentary colors.



40.4323, 55.7818, 4.6748



81.9877, 18.8019, 1.9639



35.9507, 55.3510, -70.0578



36.9785, 10.1099, 0.7818

0.0000, NaN, NaN



46.2646, -2.4686, 2.5136

Same Dimension

The Same Dimension uses a secret algorithm to generate beautiful new colors.



40.4323, 55.7818, 4.6748



48.2493, 80.6522, 12.0290



41.7108, 44.6638, 21.6944



33.5884, 1.7115, 1.3595



29.0283, 50.9051, 9.5069



6.7030, 11.9635, 0.5767

Inverse Universe

The Inverse Universe completely reimagines the original color for something new.



40.4323, 55.7818, 4.6748



48.2493, 80.6522, 12.0290



63.2272, -26.7941, -14.4902



33.5884, 1.7115, 1.3595



29.0283, 50.9051, 9.5069



6.7030, 11.9635, 0.5767

Previews

White Background



This preview shows how the HunterLab color 40.4312, 55.7854, 4.6737 looks on a white background.

Color Contrast Check

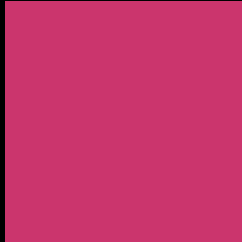
Large Text (above 18pt) WCAG AA ✓ Pass

Any Text WCAG AA ✓ Pass

Large Text (above 18pt) WCAG AAA ✓ Pass

Any Text WCAG AAA × Fail

Black Background



This preview shows how the HunterLab color 40.4312, 55.7854, 4.6737 looks on a black background.

Color Contrast Check

Large Text (above 18pt) WCAG AA ✓ Pass

Any Text WCAG AA × Fail

Large Text (above 18pt) WCAG AAA × Fail

Any Text WCAG AAA × Fail

If you want to check with other color combinations, try the [Color Contrast Checker](#).

HunterLab 40.4312, 55.7854, 4.6737 Background



This preview shows how black text looks on a background with the HunterLab color 40.4312, 55.7854, 4.6737.



This preview shows how white text looks on a background with the HunterLab color 40.4312, 55.7854,

4.6737.

Color Blindness Simulation

Color vision deficiency is a very complex topic, and I could not describe the different causes any better than Wikipedia does, so if you want to learn more, you should check out their [article about color blindness](#).

Dichromacy



Original Color

40.4312, 55.7854, 4.6737

Protanopia

40.7869, 1.6913, -12.6132

Deuteranopia

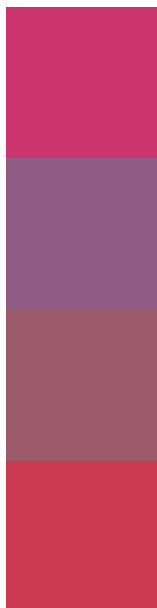
40.6027, 2.6662, 6.7100



Tritanopia

40.4695, 47.7302, 17.9930

Trichromacy



Original Color

40.4312, 55.7854, 4.6737

Protanomaly

38.4494, 20.0954, -9.0673

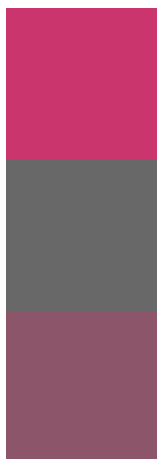
Deuteranomaly

38.9015, 22.0397, 3.9877

Tritanomaly

40.3654, 50.7210, 14.0358

Monochromacy



Original Color

40.4312, 55.7854, 4.6737

Achromatopsia

37.2064, -1.9852, 2.0215

Achromatomaly

36.2120, 18.7772, 0.3166

CSS Examples

Text

The CSS property to change the color of the text to HunterLab 40.4312, 55.7854, 4.6737 is called "color". The color property can be set on classes, ids or directly on the HTML element.

This example shows how text in the color `rgb(203, 53, 109)` looks like.

```
.text, #text, p{  
    color:rgb(203, 53, 109)  
}
```

If you want to add a text shadow in that color use the text-shadow property, you can generate a text shadow directly with our [CSS Text Shadow Generator](#).

Here you see how black text with a 4 pixel rgb(203, 53, 109) colored shadow looks like.

```
.shadow{ text-shadow: 4px 4px 2px rgb(203, 53, 109) }
```

Border

The CSS property to change the border of an element to HunterLab 40.4312, 55.7854, 4.6737 is called "border". The border property can be set on classes, ids or directly on the HTML element.

This example shows the color as border, it can be applied via the CSS property "border" or "border-color".

```
.border, #border, table{ border:4px solid rgb(203, 53, 109) }
```


If only the border color should be changed use the property `border-color`.

```
.border{ border-color:rgb(203, 53, 109) }
```

If you want to add a box shadow in that color use:

Here you see how a box with a 4 pixel `rgb(203, 53, 109)` colored shadow looks like.

```
.boxshadow{ -moz-box-shadow:4px 4px 4px 4px rgb(203, 53, 109); -webkit-box-shadow:4px 4px 4px 4px rgb(203, 53, 109); box-shadow:4px 4px 4px 4px rgb(203, 53, 109) }
```

Background

The CSS property to change the background color of an element to HunterLab 40.4312, 55.7854, 4.6737 is called "background". The background property can be set on classes, ids or directly on the HTML element.

```
.background, #background, body{  
background: rgb(203, 53, 109) }
```

If only the background color should be changed can be used:

```
.background{ background-color: rgb(203, 53,  
109) }
```

This example shows the color as background, it is applied via the CSS property "background".

To optimize and compress your CSS code, you can use our [online CSS compressor and optimizer](#) based on csstidy. If you want to create a linear or radial gradient as background or border, check our [CSS Gradient Generator](#).

Hey! You found this booklet interesting? Support Converting Colors with the new Membership Option!

The pro membership hides all ads, plus gives you double the colors in the color bucket, and more awesome pro features!

[Learn more, Memberships starting at \\$2.50/m!](#)

**Follow me
on Twitter!**

@ConvertingColor