

Converting Colors

HunterLab(40.4410, 56.3446,
5.0748)

Have a look what the booklet for
HunterLab(40.4410, 56.3446,
5.0748) contains.

HunterLab(40.4673, 56.3794, 5.1365)	3
<i>Conversions</i>	4
<i>Details</i>	6
<i>Harmonies</i>	12
<i>Previews</i>	24
<i>Color Blindness Simulation</i>	28
<i>CSS Examples</i>	31

Color

**HunterLab(40.4673, 56.3794,
5.1365)**

Conversions

Conversions Part 1

Format	Color
Hex	CC346C
RGB	204, 52, 108
RGB Percent	80%, 20%, 42%
CMY	0.2000, 0.7960, 0.5765
CMYK	0.00, 0.75, 0.47, 0.20
HSL	338°, 60%, 50%
HSV	338°, 75%, 80%
XYZ	28.8366, 16.3760, 15.8283
YIQ	103.8320, 72.6160, 49.6400

Conversions

Conversions Part 2

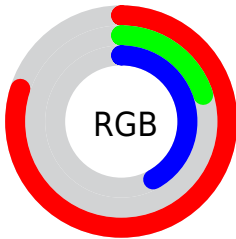
Format	Color
R_{YB}	204, 52, 108
Decimal	13382764
CIE _{Lab}	47.47, 62.42, 4.26
CIE _{LCh}	47, 62.564, 3.905
Yxy	16.3769, 0.4724, 0.2683
Android (android.graphics.Color)	4291572844 (0xFFCC346C)
YUV	103.8320, 2.0548, 87.8473
Hunter-Lab	40.4673, 56.3794, 5.1365

Details

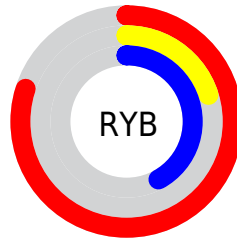
The HunterLab color **40.4673, 56.3794, 5.1365** is a dark color, and the websafe version is hex **CC3366**. The color can be described as dark muted rose. A complement of this color would be **67.8634, -44.1776, 16.5626**, and the grayscale version is **37.1179, -1.9805, 2.0167**.

A 20% lighter version of the original color is **59.2723, 56.4336, 4.7006**, and **25.0324, 44.2147, 5.7421** is the 20% darker color. If you saturate the color by 10%, you get **38.3116, 60.9820, 7.8778**, and if you desaturate by 10%, it is **43.4775, 49.9138, 3.0467**.

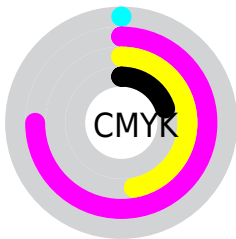
Distribution



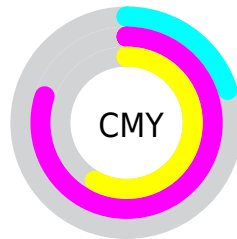
- Red (80%)
- Green (20%)
- Blue (42%)



- Red (80%)
- Yellow (20%)
- Blue (42%)



- Cyan (0%)
- Magenta (75%)
- Yellow (47%)
- Black (20%)



- Cyan (20%)
- Magenta (80%)
- Yellow (58%)

Brightness & Saturation Gradients

These gradients show how the HunterLab color 40.4673, 56.3794, 5.1365 changes by changing the brightness by 10 percent. The first figure shows a shift by +10% for each color and the second figure -10%.

Similar to the brightness gradients but the following saturation gradients show a change of the HunterLab color 40.4673, 56.3794, 5.1365 by changing the saturation by 10% instead.

40.4673, 56.3794,
5.1365

40.4673, 56.3794,
5.1365

152.1696, 72.0684,
12.9530

31.2910, 54.2037,
4.3771

61.0339, 60.5288,
6.7197

22.9364, 52.0660,
3.6334

72.3249, 62.4643,
7.5436

15.4954, 50.1979,
2.9001

84.2373, 64.2992,
8.3899

9.0909, 49.4194,
2.4378

96.7402, 66.0351,
9.2585

0.0000, INF, NaN

0.0000, INF, NaN

109.8070, 67.6757,
10.1494

0.0000, NaN, NaN

123.4142, 69.2251,

0.0000, NaN, NaN

11.0623

0.0000, NaN, NaN

137.5412, 70.6879,
11.9970

■ 40.4673, 56.3794,
5.1365

■ 40.4673, 56.3794,
5.1365

■ 38.3116, 60.9820,
7.8778

■ 43.4775, 49.9138,
3.0467

■ 37.0057, 63.3331,
11.0482

■ 47.2732, 42.2040,
1.6862

■ 36.5341, 63.9617,
12.7855

■ 51.7594, 33.8133,
1.0282

■ 56.8348, 25.1552,
0.9869

■ 62.4074, 16.4841,
1.4598

■ 68.3989, 7.9340,
2.3505

■ 74.7454, -0.4378,
3.5774

■ 81.3956, -8.6178,
5.0753

■ 88.3085, -16.6150,
6.7933

Harmonies

Analogous

The Analogous color harmony consists of three colors that are next to each other on the color wheel.



40.4684, 49.4282, -22.8806



40.4673, 56.3794, 5.1365



40.4684, 44.8265, 20.0749

Triad

The Triadic color harmony groups three colors that are evenly spaced from another and form a triangle on the color wheel.



40.4684, 56.3757, 5.1376



40.4684, -25.2292, 24.5375



40.4684, -20.8673, -62.2428

Complementary

The Complementary color scheme is a pair of colors which are on the opposite of each other on the color wheel.



40.4673, 56.3794, 5.1365



67.8634, -44.1776, 16.5626

Split Complementary

Split-complementary colors differ from the complementary color scheme. The scheme consists of three colors, the original color and two neighbors of the complement color.



40.4684, -34.3070, -31.6144



40.4673, 56.3794, 5.1365



40.4684, -36.3727, 17.3720

Square

The Square scheme is like the rectangle color scheme, but the four colors are evenly spaced on the color wheel.



40.4684, 56.3757, 5.1376



40.4684, -5.3202, 26.2570



40.4684, -39.2513, -0.9697



40.4684, 1.0972, -72.8570

Rectangle

The Rectangle color scheme consists of four colors that form a rectangle on the color wheel.



40.4673, 56.3794, 5.1365



40.4684, 29.4975, 24.2599



40.4684, -39.2513, -0.9697



40.4684, -26.3422, -53.3129

Sweetspot

The Sweet Spot groups the original color and five complimentary colors.



40.4684, 56.3757, 5.1376



81.9788, 18.7557, 2.0905



35.9214, 56.0744, -71.1739



36.9738, 10.0861, 0.8476

0.0000, NaN, NaN



46.2646, -2.4686, 2.5136

Same Dimension

The Same Dimension uses a secret algorithm to generate beautiful new colors.



40.4684, 56.3757, 5.1376



48.2235, 80.5553, 12.4023



41.7535, 45.3340, 21.9069



33.5870, 1.7042, 1.3790



29.0130, 50.8491, 9.7288



6.6992, 11.9495, 0.6316

Inverse Universe

The Inverse Universe completely reimagines the original color for something new.



40.4684, 56.3757, 5.1376



48.2235, 80.5553, 12.4023



63.4985, -26.9835, -14.6852



33.5870, 1.7042, 1.3790



29.0130, 50.8491, 9.7288



6.6992, 11.9495, 0.6316

Previews

White Background



This preview shows how the HunterLab color 40.4673, 56.3794, 5.1365 looks on a white background.

Color Contrast Check

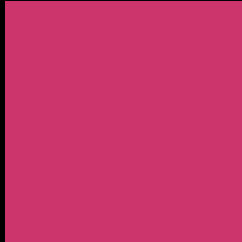
Large Text (above 18pt) WCAG AA ✓ Pass

Any Text WCAG AA ✓ Pass

Large Text (above 18pt) WCAG AAA ✓ Pass

Any Text WCAG AAA × Fail

Black Background



This preview shows how the HunterLab color 40.4673, 56.3794, 5.1365 looks on a black background.

Color Contrast Check

Large Text (above 18pt) WCAG AA ✓ Pass

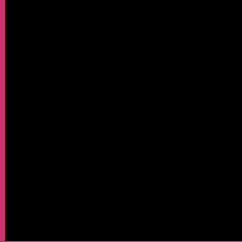
Any Text WCAG AA × Fail

Large Text (above 18pt) WCAG AAA × Fail

Any Text WCAG AAA × Fail

If you want to check with other color combinations, try the [Color Contrast Checker](#).

HunterLab 40.4673, 56.3794, 5.1365 Background



This preview shows how black text looks on a background with the HunterLab color 40.4673, 56.3794, 5.1365.



This preview shows how white text looks on a background with the HunterLab color 40.4673, 56.3794,

Color Blindness Simulation

Color vision deficiency is a very complex topic, and I could not describe the different causes any better than Wikipedia does, so if you want to learn more, you should check out their [article about color blindness](#).

Dichromacy



Original Color

40.4673, 56.3794, 5.1365

Protanopia

40.7499, 1.4920, -12.0985

Deuteranopia

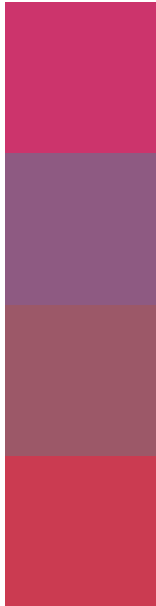
40.6743, 2.8581, 7.1666



Tritanopia

40.6262, 48.0527, 18.3528

Trichromacy



Original Color

40.4673, 56.3794, 5.1365

Protanomaly

38.3077, 20.7525, -8.7183

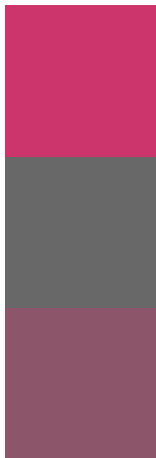
Deuteranomaly

38.7903, 22.7640, 4.2829

Tritanomaly

40.5198, 51.0181, 14.4706

Monochromacy



Original Color

40.4673, 56.3794, 5.1365

Achromatopsia

37.2064, -1.9852, 2.0215

Achromatomaly

36.1834, 18.6370, 0.7231

CSS Examples

Text

The CSS property to change the color of the text to HunterLab 40.4673, 56.3794, 5.1365 is called "color". The color property can be set on classes, ids or directly on the HTML element.

This example shows how text in the color `rgb(204, 52, 108)` looks like.

```
.text, #text, p{  
    color:rgb(204, 52, 108)  
}
```

If you want to add a text shadow in that color use the text-shadow property, you can generate a text shadow directly with our [CSS Text Shadow Generator](#).

Here you see how black text with a 4 pixel rgb(204, 52, 108) colored shadow looks like.

```
.shadow{ text-shadow: 4px 4px 2px rgb(204, 52, 108) }
```

Border

The CSS property to change the border of an element to HunterLab 40.4673, 56.3794, 5.1365 is called "border". The border property can be set on classes, ids or directly on the HTML element.

This example shows the color as border, it can be applied via the CSS property "border" or "border-color".

```
.border, #border, table{ border:4px solid rgb(204, 52, 108) }
```


If only the border color should be changed use the property border-color.

```
.border{ border-color:rgb(204, 52, 108) }
```

If you want to add a box shadow in that color use:

Here you see how a box with a 4 pixel rgb(204, 52, 108) colored shadow looks like.

```
.boxshadow{ -moz-box-shadow:4px 4px 4px  
4px rgb(204, 52, 108); -webkit-box-  
shadow:4px 4px 4px 4px rgb(204, 52, 108);  
box-shadow:4px 4px 4px 4px rgb(204, 52,  
108) }
```

Background

The CSS property to change the background color of an element to HunterLab 40.4673, 56.3794, 5.1365 is called "background". The background property can be set on classes, ids or directly on the HTML element.

```
.background, #background, body{  
background: rgb(204, 52, 108) }
```

If only the background color should be changed can be used:

```
.background{ background-color: rgb(204, 52,  
108) }
```

This example shows the color as background, it is applied via the CSS property "background".

To optimize and compress your CSS code, you can use our [online CSS compressor and optimizer](#) based on csstidy. If you want to create a linear or radial gradient as background or border, check our [CSS Gradient Generator](#).

Hey! You found this booklet interesting? Support Converting Colors with the new Membership Option!

The pro membership hides all ads, plus gives you double the colors in the color bucket, and more awesome pro features!

[Learn more, Memberships starting at \\$2.50/m!](#)

**Follow me
on Twitter!**

@ConvertingColor