

Converting Colors

HunterLab(40.4527, 8.9849,
12.5160)

Have a look what the booklet for
HunterLab(40.4527, 8.9849,
12.5160) contains.

HunterLab(40.3555, 8.9579, 12.3970)	3
<i>Conversions</i>	4
<i>Details</i>	6
<i>Harmonies</i>	12
<i>Previews</i>	24
<i>Color Blindness Simulation</i>	28
<i>CSS Examples</i>	31

Color

**HunterLab(40.3555, 8.9579,
12.3970)**

Conversions

Conversions Part 1

Format	Color
Hex	906755
RGB	144, 103, 85
RGB Percent	56%, 40%, 33%
CMY	0.4353, 0.5961, 0.6667
CMYK	0.00, 0.28, 0.41, 0.44
HSL	18°, 26%, 45%
HSV	18°, 41%, 56%
XYZ	17.9916, 16.2857, 10.7895
YIQ	113.2070, 30.2140, 3.0940

Conversions

Conversions Part 2

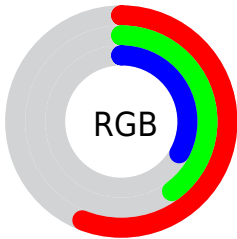
Format	Color
RYB	144, 111, 85
Decimal	9463637
CIELab	47.35, 14.04, 16.67
CIELCh	47, 21.793, 49.900
Yxy	16.2864, 0.3992, 0.3614
Android (android.graphics.Color)	4287653717 (0xFF906755)
YUV	113.2070, -13.9061, 27.0055
Hunter-Lab	40.3555, 8.9579, 12.3970

Details

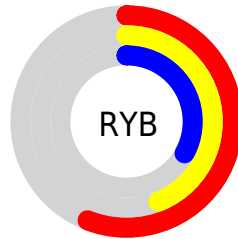
The HunterLab color $40.3555, 8.9579, 12.3970$ is a dark color, and the websafe version is hex 996666 . A complement of this color would be $43.4349, -9.2675, -9.4150$, and the grayscale version is $40.7602, -2.1749, 2.2146$.

A 20% lighter version of the original color is $60.8298, 9.4046, 15.3062$, and $22.9278, 8.2293, 9.0809$ is the 20% darker color. If you saturate the color by 10%, you get $37.6928, 12.3670, 14.1710$, and if you desaturate by 10%, it is $43.1860, 5.7642, 10.3674$.

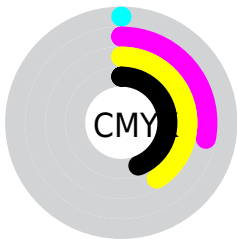
Distribution



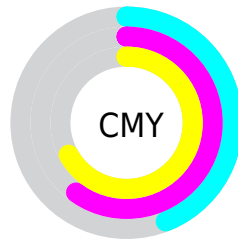
- Red (56%)
- Green (40%)
- Blue (33%)



- Red (56%)
- Yellow (44%)
- Blue (33%)



- Cyan (0%)
- Magenta (28%)
- Yellow (41%)
- Black (44%)



- Cyan (44%)
- Magenta (60%)
- Yellow (67%)

Brightness & Saturation Gradients

These gradients show how the HunterLab color 40.3555, 8.9579, 12.3970 changes by changing the brightness by 10 percent. The first figure shows a shift by +10% for each color and the second figure -10%.

Similar to the brightness gradients but the following saturation gradients show a change of the HunterLab color 40.3555, 8.9579, 12.3970 by changing the saturation by 10% instead.

40.3555, 8.9579,
12.3970

40.3555, 8.9579,
12.3970

151.9954, 8.6623,
25.6877

31.1883, 8.6280,
10.7805

60.9055, 9.3386,
15.4724

22.8438, 8.1875,
9.0739

72.1890, 9.4149,
16.9620

15.4141, 7.6107,
7.2292

84.0943, 9.4252,
18.4330

9.0193, 6.9098,
6.3135

96.5905, 9.3755,
19.8919

0.0000, INF, NaN

0.0000, NaN, NaN

109.6507, 9.2706,
21.3435

0.0000, NaN, NaN

123.2518, 9.1145,

0.0000, NaN, NaN

137.3728, 8.9108,
24.2389

■ 40.3555, 8.9579,
12.3970

■ 40.3555, 8.9579,
12.3970

■ 37.6928, 12.3670,
14.1710

■ 43.1860, 5.7642,
10.3674

■ 35.2166, 15.9870,
15.6378

■ 46.1622, 2.7871,
8.1231

■ 32.9519, 19.7840,
16.7434

■ 49.2688, 0.0126,
5.7000

■ 30.9242, 23.6944,
17.4352

■ 52.4916, -2.5756,
3.1265

■ 29.1585, 27.6132,
17.6764

■ 55.8186, -4.9951,
0.4253

■ 27.7961, 30.9873,
17.6703

■ 59.2397, -7.2632,
-2.3855

■ 62.7461, -9.3964,
-5.2915

■ 66.3304, -11.4098,
-8.2811

■ 69.9861, -13.3170,
-11.3449

Harmonies

Analogous

The Analogous color harmony consists of three colors that are next to each other on the color wheel.



40.3565, 14.4450, 7.1526



40.3555, 8.9579, 12.3970



40.3565, 0.7597, 14.7314

Triad

The Triadic color harmony groups three colors that are evenly spaced from another and form a triangle on the color wheel.



40.3565, 8.9561, 12.3976



40.3565, -17.0602, 4.8369



40.3565, 3.5777, -15.3900

Complementary

The Complementary color scheme is a pair of colors which are on the opposite of each other on the color wheel.



40.3555, 8.9579, 12.3970



43.4349, -9.2675, -9.4150

Split Complementary

Split-complementary colors differ from the complementary color scheme. The scheme consists of three colors, the original color and two neighbors of the complement color.



40.3565, -4.9902, -16.3699



40.3555, 8.9579, 12.3970



40.3565, -16.4423, -3.4802

Square

The Square scheme is like the rectangle color scheme, but the four colors are evenly spaced on the color wheel.



40.3565, 8.9561, 12.3976



40.3565, -13.9454, 11.0060



40.3565, -12.1814, -11.6454



40.3565, 11.1656, -9.1945

Rectangle

The Rectangle color scheme consists of four colors that form a rectangle on the color wheel.



40.3555, 8.9579, 12.3970



40.3565, -4.9356, 14.7375



40.3565, -12.1814, -11.6454



40.3565, 0.7020, -16.3834

Sweetspot

The Sweet Spot groups the original color and five complimentary colors.



40.3565, 8.9561, 12.3976



64.8976, 0.4721, 7.9920



37.3370, 23.2741, -8.0916



30.8520, 0.4209, 4.0049



85.4018, -4.5568, 4.6400



33.5864, -1.7921, 1.8248

Same Dimension

The Same Dimension uses a secret algorithm to generate beautiful new colors.



40.3565, 8.9561, 12.3976



50.3902, 15.9738, 18.6090



48.1062, -4.7069, 18.9679



23.8239, -0.2229, 2.5082



26.0112, 28.7116, 16.5307



3.1629, 1.2990, 1.9717

Inverse Universe

The Inverse Universe completely reimagines the original color for something new.



43.4349, -9.2675, -9.4150



55.2658, -13.1506, -16.1024



35.2953, 4.1645, -22.5016



24.1709, -2.2487, 0.0664



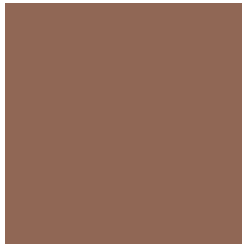
31.2137, -6.7105, -24.5283



3.6354, -1.4710, -1.3684

Previews

White Background



This preview shows how the HunterLab color 40.3555, 8.9579, 12.3970 looks on a white background.

Color Contrast Check

Large Text (above 18pt) WCAG AA ✓ Pass

Any Text WCAG AA ✓ Pass

Large Text (above 18pt) WCAG AAA ✓ Pass

Any Text WCAG AAA × Fail

Black Background



This preview shows how the HunterLab color 40.3555, 8.9579, 12.3970 looks on a black background.

Color Contrast Check

Large Text (above 18pt) WCAG AA ✓ Pass

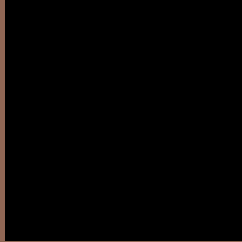
Any Text WCAG AA × Fail

Large Text (above 18pt) WCAG AAA × Fail

Any Text WCAG AAA × Fail

If you want to check with other color combinations, try the [Color Contrast Checker](#).

HunterLab 40.3555, 8.9579, 12.3970 Background



This preview shows how black text looks on a background with the HunterLab color 40.3555, 8.9579, 12.3970.



This preview shows how white text looks on a background with the HunterLab color 40.3555, 8.9579,

Color Blindness Simulation

Color vision deficiency is a very complex topic, and I could not describe the different causes any better than Wikipedia does, so if you want to learn more, you should check out their [article about color blindness](#).

Dichromacy



Original Color

40.3555, 8.9579, 12.3970

Protanopia

40.3766, -2.8291, 10.9520

Deuteranopia

40.4373, 2.6685, 12.6661



Tritanopia

40.3570, 13.7006, 4.6721

Trichromacy



Original Color

40.3555, 8.9579, 12.3970

Protanomaly

40.3844, 1.3001, 11.3528

Deuteranomaly

40.3318, 4.9711, 12.6092

Tritanomaly

40.2839, 11.8447, 7.6564

Monochromacy



Original Color

40.3555, 8.9579, 12.3970

Achromatopsia

40.6365, -2.1683, 2.2079

Achromatomaly

40.2513, 1.5301, 5.9280

CSS Examples

Text

The CSS property to change the color of the text to HunterLab 40.3555, 8.9579, 12.3970 is called "color". The color property can be set on classes, ids or directly on the HTML element.

This example shows how text in the color `rgb(144, 103, 85)` looks like.

```
.text, #text, p{  
    color:rgb(144, 103, 85)  
}
```

If you want to add a text shadow in that color use the text-shadow property, you can generate a text shadow directly with our [CSS Text Shadow Generator](#).

Here you see how black text with a 4 pixel rgb(144, 103, 85) colored shadow looks like.

```
.shadow{ text-shadow: 4px 4px 2px rgb(144, 103, 85) }
```

Border

The CSS property to change the border of an element to HunterLab 40.3555, 8.9579, 12.3970 is called "border". The border property can be set on classes, ids or directly on the HTML element.

This example shows the color as border, it can be applied via the CSS property "border" or "border-color".

```
.border, #border, table{ border:4px solid rgb(144, 103, 85) }
```


If only the border color should be changed use the property `border-color`.

```
.border{ border-color:rgb(144, 103, 85) }
```

If you want to add a box shadow in that color use:

Here you see how a box with a 4 pixel `rgb(144, 103, 85)` colored shadow looks like.

```
.boxshadow{ -moz-box-shadow:4px 4px 4px  
4px rgb(144, 103, 85); -webkit-box-  
shadow:4px 4px 4px 4px rgb(144, 103, 85);  
box-shadow:4px 4px 4px 4px rgb(144, 103,  
85) }
```

Background

The CSS property to change the background color of an element to HunterLab 40.3555, 8.9579, 12.3970 is called "background". The background property can be set on classes, ids or directly on the HTML element.

```
.background, #background, body{  
background: rgb(144, 103, 85) }
```

If only the background color should be changed can be used:

```
.background{ background-color: rgb(144,  
103, 85) }
```

This example shows the color as background, it is applied via the CSS property "background".

To optimize and compress your CSS code, you can use our [online CSS compressor and optimizer](#) based on csstidy. If you want to create a linear or radial gradient as background or border, check our [CSS Gradient Generator](#).

Hey! You found this booklet interesting? Support Converting Colors with the new Membership Option!

The pro membership hides all ads, plus gives you double the colors in the color bucket, and more awesome pro features!

[Learn more, Memberships starting at \\$2.50/m!](#)

**Follow me
on Twitter!**

@ConvertingColor