

Converting Colors

HunterLab(40.5505, 52.1737,
-1.8087)

Have a look what the booklet for
HunterLab(40.5505, 52.1737,
-1.8087) contains.

| | |
|---|----|
| HunterLab(40.6552, 52.1047, -1.8454) | 3 |
| <i>Conversions</i> | 4 |
| <i>Details</i> | 6 |
| <i>Harmonies</i> | 12 |
| <i>Previews</i> | 24 |
| <i>Color Blindness Simulation</i> | 28 |
| <i>CSS Examples</i> | 31 |

Color

**HunterLab(40.6552, 52.1047,
-1.8454)**

Conversions

Conversions Part 1

| Format | Color |
|---------------|----------------------------|
| Hex | C43D7C |
| RGB | 196, 61, 124 |
| RGB Percent | 77%, 24%, 49% |
| CMY | 0.2314, 0.7608, 0.5137 |
| CMYK | 0.00, 0.69, 0.37, 0.23 |
| HSL | 332°, 53%, 50% |
| HSV | 332°, 69%, 77% |
| XYZ | 28.0717, 16.5285, 20.7795 |
| YIQ | 108.5470, 60.2370, 48.2130 |

Conversions

Conversions Part 2

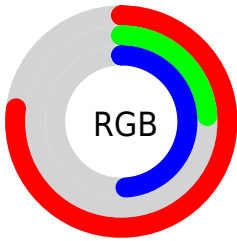
| Format | Color |
|-------------------------------------|------------------------------|
| R_{YB} | 196, 61, 124 |
| Decimal | 12860796 |
| CIE Lab | 47.66, 58.58, -5.39 |
| CIE LCh | 48, 58.823, 354.745 |
| Yxy | 16.5293, 0.4294, 0.2528 |
| Android (android.graphics.Color) | 4291050876 (0xFFC43D7C) |
| YUV | 108.5470, 7.6183, 76.6963 |
| Hunter-Lab | 40.6552, 52.1047, -1.8454 |

Details

The HunterLab color **40.6552, 52.1047, -1.8454** is a dark color, and the websafe version is hex **CC3366**. The color can be described as dark muted rose. A complement of this color would be **64.9352, -42.4430, 19.0061**, and the grayscale version is **38.8903, -2.0751, 2.1130**.

A 20% lighter version of the original color is **61.1158, 55.3056, -1.2197**, and **24.3131, 43.7263, -0.4857** is the 20% darker color. If you saturate the color by 10%, you get **38.1505, 57.6168, -0.0141**, and if you desaturate by 10%, it is **43.9277, 45.0847, -2.8092**.

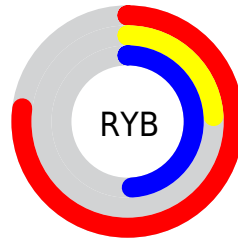
Distribution



Red (77%)

Green (24%)

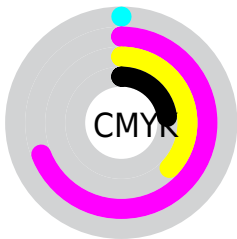
Blue (49%)



Red (77%)

Yellow (24%)

Blue (49%)

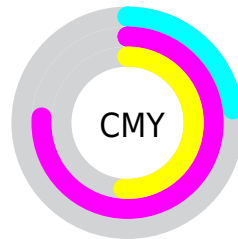


Cyan (0%)

Magenta (69%)

Yellow (37%)

Black (23%)



Cyan (23%)

Magenta (76%)

Yellow (51%)

Brightness & Saturation Gradients

These gradients show how the HunterLab color 40.6552, 52.1047, -1.8454 changes by changing the brightness by 10 percent. The first figure shows a shift by +10% for each color and the second figure -10%.

Similar to the brightness gradients but the following saturation gradients show a change of the HunterLab color 40.6552, 52.1047, -1.8454 by changing the saturation by 10% instead.

40.6552, 52.1047,
-1.8454

40.6552, 52.1047,
-1.8454

152.4616, 66.7326,
2.1720

31.4635, 50.0122,
-2.0460

61.2493, 56.0376,
-1.2637

23.0919, 47.9157,
-2.1779

72.5528, 57.8540,
-0.8963

15.6319, 45.9981,
-2.2281

84.4771, 59.5673,
-0.4831

9.2096, 44.8895,
-2.1840

96.9913, 61.1809,
-0.0275

0.0000, INF, -NF

0.0000, INF, NaN

110.0689, 62.6994,
0.4680

0.0000, NaN, NaN

123.6865, 64.1276,

0.0000, NaN, NaN

1.0011

0.0000, NaN, NaN

137.8235, 65.4705,
1.5696

■ 40.6552, 52.1047,
-1.8454

■ 40.6552, 52.1047,
-1.8454

■ 38.1505, 57.6168,
-0.0141

■ 43.9277, 45.0847,
-2.8092

■ 36.4464, 61.1127,
2.6137

■ 47.8869, 37.1408,
-2.9631

■ 35.4508, 62.5744,
5.7603

■ 52.4417, 28.7386,
-2.4230

■ 35.3540, 62.7038,
6.1088

■ 57.5029, 20.1939,
-1.3199

■ 62.9921, 11.6907,
0.2279

■ 68.8441, 3.3211,
2.1237

■ 75.0056, -4.8794,
4.2928

■ 81.4340, -12.9068,
6.6787

■ 88.0949, -20.7727,
9.2390

Harmonies

Analogous

The Analogous color harmony consists of three colors that are next to each other on the color wheel.



40.6563, 40.7629, -30.4552



40.6552, 52.1047, -1.8454



40.6563, 46.4664, 16.2103

Triad

The Triadic color harmony groups three colors that are evenly spaced from another and form a triangle on the color wheel.



40.6563, 52.1015, -1.8442



40.6563, -19.1234, 24.9099



40.6563, -24.7385, -49.5251

Complementary

The Complementary color scheme is a pair of colors which are on the opposite of each other on the color wheel.



40.6552, 52.1047, -1.8454



64.9352, -42.4430, 19.0061

Split Complementary

Split-complementary colors differ from the complementary color scheme. The scheme consists of three colors, the original color and two neighbors of the complement color.



40.6563, -35.1234, -19.7090



40.6552, 52.1047, -1.8454



40.6563, -32.4240, 19.8123

Square

The Square scheme is like the rectangle color scheme, but the four colors are evenly spaced on the color wheel.



40.6563, 52.1015, -1.8442



40.6563, 1.9712, 25.7977



40.6563, -37.5858, 5.8910



40.6563, -6.1547, -66.2211

Rectangle

The Rectangle color scheme consists of four colors that form a rectangle on the color wheel.



40.6552, 52.1047, -1.8454



40.6563, 34.3744, 22.1210



40.6563, -37.5858, 5.8910



40.6563, -29.1238, -40.1083

Sweetspot

The Sweet Spot groups the original color and five complimentary colors.



40.6563, 52.1015, -1.8442



82.9207, 18.5325, -0.2528



35.0866, 46.9929, -65.8070



37.3961, 10.0574, -0.3956

0.0000, NaN, NaN



46.2646, -2.4686, 2.5136

Same Dimension

The Same Dimension uses a secret algorithm to generate beautiful new colors.



40.6563, 52.1015, -1.8442



49.9697, 80.4721, 1.7823



39.8897, 44.4222, 18.7938



31.8659, 1.7316, 0.9411



28.3695, 50.3725, 4.4642



6.0138, 10.8948, -0.7340

Inverse Universe

The Inverse Universe completely reimagines the original color for something new.



40.6563, 52.1015, -1.8442



49.9697, 80.4721, 1.7823



65.1598, -30.1245, -7.8961



31.8659, 1.7316, 0.9411



28.3695, 50.3725, 4.4642



6.0138, 10.8948, -0.7340

Previews

White Background



This preview shows how the HunterLab color 40.6552, 52.1047, -1.8454 looks on a white background.

Color Contrast Check

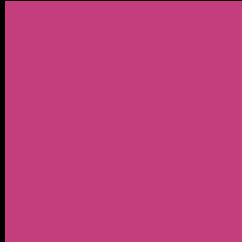
Large Text (above 18pt) WCAG AA ✓ Pass

Any Text WCAG AA ✓ Pass

Large Text (above 18pt) WCAG AAA ✓ Pass

Any Text WCAG AAA × Fail

Black Background



This preview shows how the HunterLab color 40.6552, 52.1047, -1.8454 looks on a black background.

Color Contrast Check

Large Text (above 18pt) WCAG AA ✓ Pass

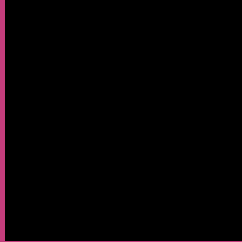
Any Text WCAG AA × Fail

Large Text (above 18pt) WCAG AAA × Fail

Any Text WCAG AAA × Fail

If you want to check with other color combinations, try the [Color Contrast Checker](#).

HunterLab 40.6552, 52.1047, -1.8454 Background



This preview shows how black text looks on a background with the HunterLab color 40.6552, 52.1047, -1.8454.



This preview shows how white text looks on a background with the HunterLab color 40.6552, 52.1047, -1.8454.

-1.8454.

Color Blindness Simulation

Color vision deficiency is a very complex topic, and I could not describe the different causes any better than Wikipedia does, so if you want to learn more, you should check out their [article about color blindness](#).

Dichromacy



Original Color

40.6552, 52.1047, -1.8454

Protanopia

40.9467, 3.4165, -21.5480

Deuteranopia

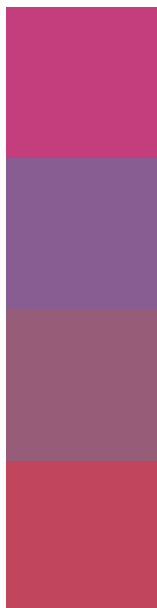
40.8009, 2.7756, 0.7339



Tritanopia

40.7902, 41.1450, 15.6495

Trichromacy



Original Color

40.6552, 52.1047, -1.8454

Protanomaly

38.8007, 19.9411, -17.2965

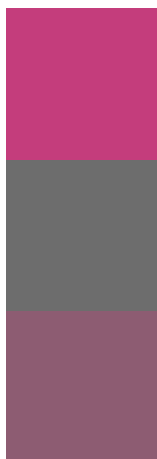
Deuteranomaly

39.3629, 20.8797, -2.1441

Tritanomaly

40.6617, 44.7202, 10.3973

Monochromacy



Original Color

40.6552, 52.1047, -1.8454

Achromatopsia

39.1058, -2.0866, 2.1247

Achromatomaly

38.1208, 16.8660, -0.9750

CSS Examples

Text

The CSS property to change the color of the text to HunterLab 40.6552, 52.1047, -1.8454 is called "color". The color property can be set on classes, ids or directly on the HTML element.

This example shows how text in the color `rgb(196, 61, 124)` looks like.

```
.text, #text, p{  
    color:rgb(196, 61, 124)  
}
```

If you want to add a text shadow in that color use the text-shadow property, you can generate a text shadow directly with our [CSS Text Shadow Generator](#).

Here you see how black text with a 4 pixel rgb(196, 61, 124) colored shadow looks like.

```
.shadow{ text-shadow: 4px 4px 2px rgb(196, 61, 124) }
```

Border

The CSS property to change the border of an element to HunterLab 40.6552, 52.1047, -1.8454 is called "border". The border property can be set on classes, ids or directly on the HTML element.

This example shows the color as border, it can be applied via the CSS property "border" or "border-color".

```
.border, #border, table{ border:4px solid rgb(196, 61, 124) }
```


If only the border color should be changed use the property `border-color`.

```
.border{ border-color:rgb(196, 61, 124) }
```

If you want to add a box shadow in that color use:

Here you see how a box with a 4 pixel `rgb(196, 61, 124)` colored shadow looks like.

```
.boxshadow{ -moz-box-shadow:4px 4px 4px  
4px rgb(196, 61, 124); -webkit-box-  
shadow:4px 4px 4px 4px rgb(196, 61, 124);  
box-shadow:4px 4px 4px 4px rgb(196, 61,  
124) }
```

Background

The CSS property to change the background color of an element to HunterLab 40.6552, 52.1047, -1.8454 is called "background". The background property can be set on classes, ids or directly on the HTML element.

```
.background, #background, body{  
background: rgb(196, 61, 124) }
```

If only the background color should be changed can be used:

```
.background{ background-color: rgb(196, 61,  
124) }
```

This example shows the color as background, it is applied via the CSS property "background".

To optimize and compress your CSS code, you can use our [online CSS compressor and optimizer](#) based on csstidy. If you want to create a linear or radial gradient as background or border, check our [CSS Gradient Generator](#).

Hey! You found this booklet interesting? Support Converting Colors with the new Membership Option!

The pro membership hides all ads, plus gives you double the colors in the color bucket, and more awesome pro features!

[Learn more, Memberships starting at \\$2.50/m!](#)

**Follow me
on Twitter!**

@ConvertingColor