

Converting Colors

HunterLab(40.7084, 56.3072,
-0.9698)

Have a look what the booklet for
HunterLab(40.7084, 56.3072,
-0.9698) contains.

HunterLab(40.5721, 56.2318, -0.9221)	3
<i>Conversions</i>	4
<i>Details</i>	6
<i>Harmonies</i>	12
<i>Previews</i>	24
<i>Color Blindness Simulation</i>	28
<i>CSS Examples</i>	31

Color

**HunterLab(40.5721, 56.2318,
-0.9221)**

Conversions

Conversions Part 1

Format	Color
Hex	C9367A
RGB	201, 54, 122
RGB Percent	79%, 21%, 48%
CMY	0.2118, 0.7882, 0.5216
CMYK	0.00, 0.73, 0.39, 0.21
HSL	332°, 58%, 50%
HSV	332°, 73%, 79%
XYZ	28.9194, 16.4610, 20.0654
YIQ	105.7050, 65.7840, 52.3120

Conversions

Conversions Part 2

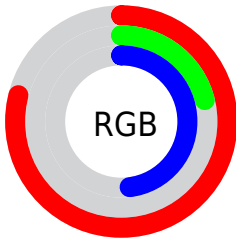
Format	Color
R_{YB}	201, 54, 122
Decimal	13186682
CIE _{Lab}	47.57, 62.27, -4.20
CIE _{LCh}	48, 62.409, 356.139
Yxy	16.4619, 0.4419, 0.2515
Android (android.graphics.Color)	4291376762 (0xFFC9367A)
YUV	105.7050, 8.0334, 83.5737
Hunter-Lab	40.5721, 56.2318, -0.9221

Details

The HunterLab color **40.5721, 56.2318, -0.9221** is a dark color, and the websafe version is hex **CC3366**. The color can be described as dark muted rose. A complement of this color would be **66.5218, -44.9219, 20.4231**, and the grayscale version is **37.8070, -2.0173, 2.0541**.

A 20% lighter version of the original color is **60.1051, 57.5167, -1.4579**, and **24.9904, 44.7752, 0.8124** is the 20% darker color. If you saturate the color by 10%, you get **38.3516, 61.0501, 1.3629**, and if you desaturate by 10%, it is **43.6093, 49.6038, -2.3322**.

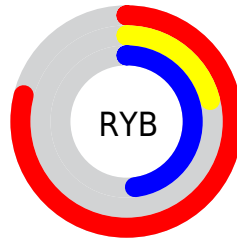
Distribution



Red (79%)

Green (21%)

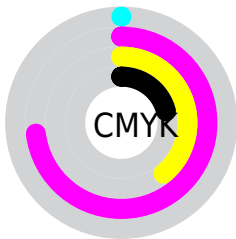
Blue (48%)



Red (79%)

Yellow (21%)

Blue (48%)

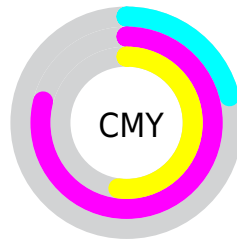


Cyan (0%)

Magenta (73%)

Yellow (39%)

Black (21%)



Cyan (21%)

Magenta (79%)

Yellow (52%)

Brightness & Saturation Gradients

These gradients show how the HunterLab color 40.5721, 56.2318, -0.9221 changes by changing the brightness by 10 percent. The first figure shows a shift by +10% for each color and the second figure -10%.

Similar to the brightness gradients but the following saturation gradients show a change of the HunterLab color 40.5721, 56.2318, -0.9221 by changing the saturation by 10% instead.

40.5721, 56.2318,
-0.9221

40.5721, 56.2318,
-0.9221

152.3325, 71.8720,
3.5351

31.3872, 54.0596,
-1.1846

61.1540, 60.3715,
-0.2269

23.0231, 51.9220,
-1.3829

72.4520, 62.3015,
0.1930

15.5715, 50.0464,
-1.5044

84.3711, 64.1307,
0.6563

9.1573, 49.2124,
-1.5390

96.8803, 65.8609,
1.1600

0.0000, INF, -NF

0.0000, INF, NaN

109.9531, 67.4958,
1.7017

0.0000, NaN, NaN

123.5661, 69.0396,

0.0000, NaN, NaN

2.2793

0.0000, NaN, NaN

137.6987, 70.4969,
2.8909

■ 40.5721, 56.2318,
-0.9221

■ 40.5721, 56.2318,
-0.9221

■ 38.3516, 61.0501,
1.3629

■ 43.6093, 49.6038,
-2.3322

■ 36.9516, 63.6425,
4.3772

■ 47.3939, 41.7733,
-2.8760

■ 36.3419, 64.4099,
6.6363

■ 51.8351, 33.2808,
-2.6498

■ 56.8378, 24.5210,
-1.7858

■ 62.3156, 15.7376,
-0.4127

■ 68.1950, 7.0611,
1.3600

■ 74.4159, -1.4509,
3.4460

■ 80.9297, -9.7831,
5.7795

■ 87.6975, -17.9422,
8.3109

Harmonies

Analogous

The Analogous color harmony consists of three colors that are next to each other on the color wheel.



40.5732, 44.7395, -31.4640



40.5721, 56.2318, -0.9221



40.5732, 49.2753, 17.3882

Triad

The Triadic color harmony groups three colors that are evenly spaced from another and form a triangle on the color wheel.



40.5732, 56.2284, -0.9209



40.5732, -20.8776, 25.3411



40.5732, -25.1874, -55.2770

Complementary

The Complementary color scheme is a pair of colors which are on the opposite of each other on the color wheel.



40.5721, 56.2318, -0.9221



66.5218, -44.9219, 20.4231

Split Complementary

Split-complementary colors differ from the complementary color scheme. The scheme consists of three colors, the original color and two neighbors of the complement color.



40.5732, -36.3446, -22.8593



40.5721, 56.2318, -0.9221



40.5732, -34.3015, 20.0647

Square

The Square scheme is like the rectangle color scheme, but the four colors are evenly spaced on the color wheel.



40.5732, 56.2284, -0.9209



40.5732, 1.0485, 26.2907



40.5732, -39.2369, 5.1070



40.5732, -5.2855, -72.5898

Rectangle

The Rectangle color scheme consists of four colors that form a rectangle on the color wheel.



40.5721, 56.2318, -0.9221



40.5732, 35.8349, 23.0363



40.5732, -39.2369, 5.1070



40.5732, -29.8835, -45.1055

Sweetspot

The Sweet Spot groups the original color and five complimentary colors.



40.5732, 56.2284, -0.9209



82.1516, 19.6529, -0.3674



34.3431, 51.3420, -73.3372



37.0638, 10.5488, -0.4308

0.0000, NaN, NaN



46.2646, -2.4686, 2.5136

Same Dimension

The Same Dimension uses a secret algorithm to generate beautiful new colors.



40.5732, 56.2284, -0.9209



48.9403, 82.3142, 4.0977



39.7524, 48.5853, 20.1387



32.7371, 1.7856, 0.9800



28.8485, 51.1881, 4.8108



6.3926, 11.5570, -0.5939

Inverse Universe

The Inverse Universe completely reimagines the original color for something new.



40.5732, 56.2284, -0.9209



48.9403, 82.3142, 4.0977



66.7283, -31.6365, -8.5347



32.7371, 1.7856, 0.9800



28.8485, 51.1881, 4.8108



6.3926, 11.5570, -0.5939

Previews

White Background



This preview shows how the HunterLab color 40.5721, 56.2318, -0.9221 looks on a white background.

Color Contrast Check

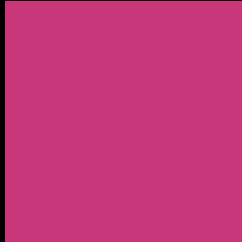
Large Text (above 18pt) WCAG AA ✓ Pass

Any Text WCAG AA ✓ Pass

Large Text (above 18pt) WCAG AAA ✓ Pass

Any Text WCAG AAA × Fail

Black Background



This preview shows how the HunterLab color 40.5721, 56.2318, -0.9221 looks on a black background.

Color Contrast Check

Large Text (above 18pt) WCAG AA ✓ Pass

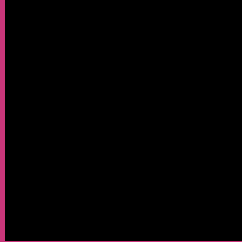
Any Text WCAG AA × Fail

Large Text (above 18pt) WCAG AAA × Fail

Any Text WCAG AAA × Fail

If you want to check with other color combinations, try the [Color Contrast Checker](#).

HunterLab 40.5721, 56.2318, -0.9221 Background



This preview shows how black text looks on a background with the HunterLab color 40.5721, 56.2318, -0.9221.



This preview shows how white text looks on a background with the HunterLab color 40.5721, 56.2318, -0.9221.

-0.9221.

Color Blindness Simulation

Color vision deficiency is a very complex topic, and I could not describe the different causes any better than Wikipedia does, so if you want to learn more, you should check out their [article about color blindness](#).

Dichromacy



Original Color

40.5721, 56.2318, -0.9221

Protanopia

40.9197, 3.4108, -22.2522

Deuteranopia

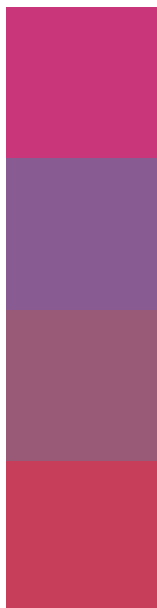
40.8347, 2.7750, 1.6606



Tritanopia

40.5894, 45.2137, 17.0948

Trichromacy



Original Color

40.5721, 56.2318, -0.9221

Protanomaly

38.4600, 21.2614, -17.8514

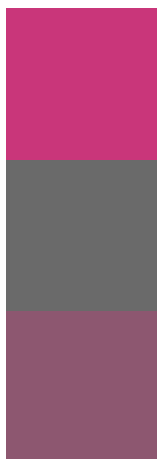
Deuteranomaly

39.1098, 22.2693, -1.4943

Tritanomaly

40.4049, 49.1073, 11.5631

Monochromacy



Original Color

40.5721, 56.2318, -0.9221

Achromatopsia

37.9643, -2.0257, 2.0627

Achromatomaly

36.9445, 19.0170, -1.5030

CSS Examples

Text

The CSS property to change the color of the text to HunterLab 40.5721, 56.2318, -0.9221 is called "color". The color property can be set on classes, ids or directly on the HTML element.

This example shows how text in the color `rgb(201, 54, 122)` looks like.

```
.text, #text, p{  
    color:rgb(201, 54, 122)  
}
```

If you want to add a text shadow in that color use the text-shadow property, you can generate a text shadow directly with our [CSS Text Shadow Generator](#).

Here you see how black text with a 4 pixel rgb(201, 54, 122) colored shadow looks like.

```
.shadow{ text-shadow: 4px 4px 2px rgb(201, 54, 122) }
```

Border

The CSS property to change the border of an element to HunterLab 40.5721, 56.2318, -0.9221 is called "border". The border property can be set on classes, ids or directly on the HTML element.

This example shows the color as border, it can be applied via the CSS property "border" or "border-color".

```
.border, #border, table{ border:4px solid rgb(201, 54, 122) }
```


If only the border color should be changed use the property border-color.

```
.border{ border-color:rgb(201, 54, 122) }
```

If you want to add a box shadow in that color use:

Here you see how a box with a 4 pixel rgb(201, 54, 122) colored shadow looks like.

```
.boxshadow{ -moz-box-shadow:4px 4px 4px  
4px rgb(201, 54, 122); -webkit-box-  
shadow:4px 4px 4px 4px rgb(201, 54, 122);  
box-shadow:4px 4px 4px 4px rgb(201, 54,  
122) }
```

Background

The CSS property to change the background color of an element to HunterLab 40.5721, 56.2318, -0.9221 is called "background". The background property can be set on classes, ids or directly on the HTML element.

```
.background, #background, body{  
background: rgb(201, 54, 122) }
```

If only the background color should be changed can be used:

```
.background{ background-color: rgb(201, 54,  
122) }
```

This example shows the color as background, it is applied via the CSS property "background".

To optimize and compress your CSS code, you can use our [online CSS compressor and optimizer](#) based on csstidy. If you want to create a linear or radial gradient as background or border, check our [CSS Gradient Generator](#).

Hey! You found this booklet interesting? Support Converting Colors with the new Membership Option!

The pro membership hides all ads, plus gives you double the colors in the color bucket, and more awesome pro features!

[Learn more, Memberships starting at \\$2.50/m!](#)

**Follow me
on Twitter!**

@ConvertingColor