

Converting Colors

HunterLab(40.8743, 13.6953,
17.1389)

Have a look what the booklet for
HunterLab(40.8743, 13.6953,
17.1389) contains.

HunterLab(40.8958, 13.8388, 17.0415)	3
<i>Conversions</i>	4
<i>Details</i>	6
<i>Harmonies</i>	12
<i>Previews</i>	24
<i>Color Blindness Simulation</i>	28
<i>CSS Examples</i>	31

Color

**HunterLab(40.8958, 13.8388,
17.0415)**

Conversions

Conversions Part 1

Format	Color
Hex	9D6446
RGB	157, 100, 70
RGB Percent	62%, 39%, 27%
CMY	0.3843, 0.6078, 0.7255
CMYK	0.00, 0.36, 0.55, 0.38
HSL	21°, 38%, 45%
HSV	21°, 55%, 62%
XYZ	19.5673, 16.7247, 7.9912
YIQ	113.6230, 43.6020, 2.7540

Conversions

Conversions Part 2

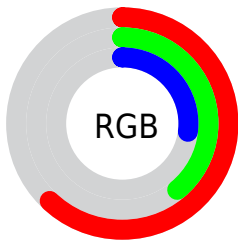
Format	Color
RYB	157, 116, 70
Decimal	10314822
CIELab	47.91, 19.75, 26.46
CIELCh	48, 33.017, 53.254
Yxy	16.7255, 0.4419, 0.3777
Android (android.graphics.Color)	4288504902 (0xFF9D6446)
YUV	113.6230, -21.5061, 38.0416
Hunter-Lab	40.8958, 13.8388, 17.0415

Details

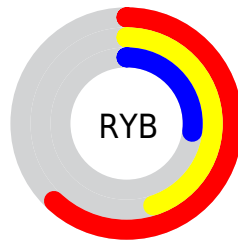
The HunterLab color **40.8958, 13.8388, 17.0415** is a dark color, and the websafe version is hex **996633**. A complement of this color would be **43.4905, -9.6158, -16.8560**, and the grayscale version is **40.9448, -2.1847, 2.2246**.

A 20% lighter version of the original color is **61.4502, 14.8350, 21.2858**, and **23.3263, 12.1945, 12.2494** is the 20% darker color. If you saturate the color by 10%, you get **38.3436, 17.6716, 18.4824**, and if you desaturate by 10%, it is **43.6460, 10.2381, 15.1995**.

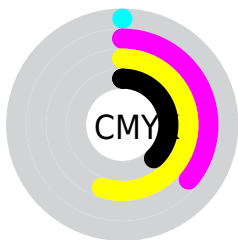
Distribution



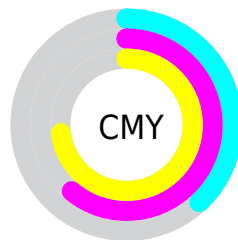
- Red (62%)
- Green (39%)
- Blue (27%)



- Red (62%)
- Yellow (45%)
- Blue (27%)



- Cyan (0%)
- Magenta (36%)
- Yellow (55%)
- Black (38%)



- Cyan (38%)
- Magenta (61%)
- Yellow (73%)

Brightness & Saturation Gradients

These gradients show how the HunterLab color 40.8958, 13.8388, 17.0415 changes by changing the brightness by 10 percent. The first figure shows a shift by +10% for each color and the second figure -10%.

Similar to the brightness gradients but the following saturation gradients show a change of the HunterLab color 40.8958, 13.8388, 17.0415 by changing the saturation by 10% instead.

40.8958, 13.8388,
17.0415

40.8958, 13.8388,
17.0415

152.8351, 15.6948,
34.9847

31.6843, 13.2139,
14.6905

61.5250, 14.7666,
21.3966

23.2912, 12.4635,
12.1638

72.8445, 15.0986,
23.4549

15.8070, 11.5630,
9.9039

84.7839, 15.3542,
25.4579

9.3592, 10.4916,
6.5514

97.3126, 15.5405,
27.4179

0.0000, INF, NaN

0.0000, NaN, NaN

110.4039, 15.6632,
29.3441

0.0000, NaN, NaN

124.0348, 15.7272,

0.0000, NaN, NaN

31.2437

0.0000, NaN, NaN

138.1847, 15.7365,
33.1223

■ 40.8958, 13.8388,
17.0415

■ 40.8958, 13.8388,
17.0415

■ 38.3436, 17.6716,
18.4824

■ 43.6460, 10.2381,
15.1995

■ 36.0092, 21.7078,
19.4651

■ 46.5697, 6.8880,
13.0102

■ 33.9176, 25.8771,
19.9449

■ 49.6489, 3.7833,
10.5247

■ 32.0900, 30.0662,
19.9180

■ 52.8668, 0.9115,
7.7866

■ 31.3367, 31.9165,
19.8683

■ 56.2091, -1.7441,
4.8328

■ 59.6632, -4.2027,
1.6936

■ 63.2183, -6.4831,
-1.6060

■ 66.8653, -8.6036,
-5.0456

■ 70.5961, -10.5811,
-8.6086

Harmonies

Analogous

The Analogous color harmony consists of three colors that are next to each other on the color wheel.



40.8968, 23.3528, 10.5309



40.8958, 13.8388, 17.0415



40.8968, 0.7877, 19.4766

Triad

The Triadic color harmony groups three colors that are evenly spaced from another and form a triangle on the color wheel.



40.8968, 13.8366, 17.0420



40.8968, -24.1272, 4.9169



40.8968, 8.1384, -26.1307

Complementary

The Complementary color scheme is a pair of colors which are on the opposite of each other on the color wheel.



40.8958, 13.8388, 17.0415



43.4905, -9.6158, -16.8560

Split Complementary

Split-complementary colors differ from the complementary color scheme. The scheme consists of three colors, the original color and two neighbors of the complement color.



40.8968, -5.0738, -29.0492



40.8958, 13.8388, 17.0415



40.8968, -22.6738, -8.2953

Square

The Square scheme is like the rectangle color scheme, but the four colors are evenly spaced on the color wheel.



40.8968, 13.8366, 17.0420



40.8968, -20.3162, 14.0311



40.8968, -16.0650, -21.7208



40.8968, 19.7870, -14.6690

Rectangle

The Rectangle color scheme consists of four colors that form a rectangle on the color wheel.



40.8958, 13.8388, 17.0415



40.8968, -7.7482, 19.2438



40.8968, -16.0650, -21.7208



40.8968, 3.6938, -28.2651

Sweetspot

The Sweet Spot groups the original color and five complimentary colors.



40.8968, 13.8366, 17.0420



69.9112, 1.9324, 11.1456



36.2037, 35.2085, -10.5200



32.4224, 1.2299, 5.5479



88.7363, -4.7347, 4.8212



36.4511, -1.9449, 1.9805

Same Dimension

The Same Dimension uses a secret algorithm to generate beautiful new colors.



40.8968, 13.8366, 17.0420



50.7097, 24.6342, 25.0268



52.0629, -6.2271, 25.3730



26.4605, -0.3610, 2.8865



28.3535, 28.4571, 17.9695



4.6759, 1.7119, 2.9112

Inverse Universe

The Inverse Universe completely reimagines the original color for something new.



43.4905, -9.6158, -16.8560



54.7212, -12.4771, -28.3959



31.8671, 10.4465, -39.5285



26.6907, -2.3752, -0.0479



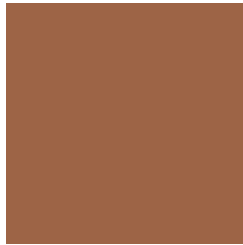
31.4692, -4.5556, -29.4995



5.0293, -1.8033, -2.3934

Previews

White Background



This preview shows how the HunterLab color 40.8958, 13.8388, 17.0415 looks on a white background.

Color Contrast Check

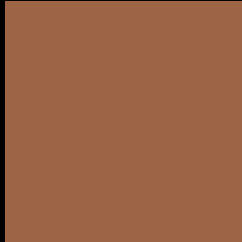
Large Text (above 18pt) WCAG AA ✓ Pass

Any Text WCAG AA ✓ Pass

Large Text (above 18pt) WCAG AAA ✓ Pass

Any Text WCAG AAA × Fail

Black Background



This preview shows how the HunterLab color 40.8958, 13.8388, 17.0415 looks on a black background.

Color Contrast Check

Large Text (above 18pt) WCAG AA ✓ Pass

Any Text WCAG AA × Fail

Large Text (above 18pt) WCAG AAA × Fail

Any Text WCAG AAA × Fail

If you want to check with other color combinations, try the [Color Contrast Checker](#).

HunterLab 40.8958, 13.8388, 17.0415 Background



This preview shows how black text looks on a background with the HunterLab color 40.8958, 13.8388, 17.0415.



This preview shows how white text looks on a background with the HunterLab color 40.8958, 13.8388,

Color Blindness Simulation

Color vision deficiency is a very complex topic, and I could not describe the different causes any better than Wikipedia does, so if you want to learn more, you should check out their [article about color blindness](#).

Dichromacy



Original Color

40.8958, 13.8388, 17.0415

Protanopia

41.0216, -3.9087, 15.5878

Deuteranopia

40.9364, 2.4590, 17.3471



Tritanopia

40.8851, 19.8253, 6.9319

Trichromacy



Original Color

40.8958, 13.8388, 17.0415

Protanomaly

40.8075, 2.1807, 16.0254

Deuteranomaly

40.9359, 6.4376, 17.1826

Tritanomaly

40.7110, 17.6029, 10.9797

Monochromacy



Original Color

40.8958, 13.8388, 17.0415

Achromatopsia

41.0207, -2.1888, 2.2287

Achromatomaly

40.7001, 2.8026, 8.2950

CSS Examples

Text

The CSS property to change the color of the text to HunterLab 40.8958, 13.8388, 17.0415 is called "color". The color property can be set on classes, ids or directly on the HTML element.

This example shows how text in the color `rgb(157, 100, 70)` looks like.

```
.text, #text, p{  
    color:rgb(157, 100, 70)  
}
```

If you want to add a text shadow in that color use the text-shadow property, you can generate a text shadow directly with our [CSS Text Shadow Generator](#).

Here you see how black text with a 4 pixel rgb(157, 100, 70) colored shadow looks like.

```
.shadow{ text-shadow: 4px 4px 2px rgb(157, 100, 70) }
```

Border

The CSS property to change the border of an element to HunterLab 40.8958, 13.8388, 17.0415 is called "border". The border property can be set on classes, ids or directly on the HTML element.

This example shows the color as border, it can be applied via the CSS property "border" or "border-color".

```
.border, #border, table{ border:4px solid rgb(157, 100, 70) }
```


If only the border color should be changed use the property `border-color`.

```
.border{ border-color:rgb(157, 100, 70) }
```

If you want to add a box shadow in that color use:

Here you see how a box with a 4 pixel `rgb(157, 100, 70)` colored shadow looks like.

```
.boxshadow{ -moz-box-shadow:4px 4px 4px  
4px rgb(157, 100, 70); -webkit-box-  
shadow:4px 4px 4px 4px rgb(157, 100, 70);  
box-shadow:4px 4px 4px 4px rgb(157, 100,  
70) }
```

Background

The CSS property to change the background color of an element to HunterLab 40.8958, 13.8388, 17.0415 is called "background". The background property can be set on classes, ids or directly on the HTML element.

```
.background, #background, body{  
background: rgb(157, 100, 70) }
```

If only the background color should be changed can be used:

```
.background{ background-color: rgb(157,  
100, 70) }
```

This example shows the color as background, it is applied via the CSS property "background".

To optimize and compress your CSS code, you can use our [online CSS compressor and optimizer](#) based on csstidy. If you want to create a linear or radial gradient as background or border, check our [CSS Gradient Generator](#).

Hey! You found this booklet interesting? Support Converting Colors with the new Membership Option!

The pro membership hides all ads, plus gives you double the colors in the color bucket, and more awesome pro features!

[Learn more, Memberships starting at \\$2.50/m!](#)

**Follow me
on Twitter!**

@ConvertingColor