

Converting Colors

HunterLab(40.9810, 3.8983,
11.7553)

Have a look what the booklet for
HunterLab(40.9810, 3.8983,
11.7553) contains.

HunterLab(41.1008, 3.7506, 11.7580)	3
<i>Conversions</i>	4
<i>Details</i>	6
<i>Harmonies</i>	12
<i>Previews</i>	24
<i>Color Blindness Simulation</i>	28
<i>CSS Examples</i>	31

Color

**HunterLab(41.1008, 3.7506,
11.7580)**

Conversions

Conversions Part 1

Format	Color
Hex	886D59
RGB	136, 109, 89
RGB Percent	53%, 43%, 35%
CMY	0.4667, 0.5725, 0.6510
CMYK	0.00, 0.20, 0.35, 0.47
HSL	26°, 21%, 44%
HSV	26°, 35%, 53%
XYZ	17.4251, 16.8928, 11.7934
YIQ	114.7930, 22.5120, -0.4960

Conversions

Conversions Part 2

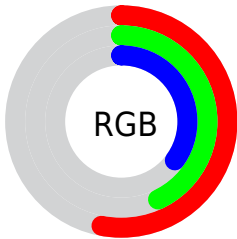
Format	Color
R_{YB}	136, 124, 89
Decimal	8940889
CIE _{Lab}	48.13, 7.64, 15.22
CIE _{LCh}	48, 17.034, 63.349
Yxy	16.8935, 0.3779, 0.3664
Android (android.graphics.Color)	4287130969 (0xFF886D59)
YUV	114.7930, -12.7159, 18.5985
Hunter-Lab	41.1008, 3.7506, 11.7580

Details

The HunterLab color $41.1008, 3.7506, 11.7580$ is a dark color, and the websafe version is hex 996666 . A complement of this color would be $40.4866, -5.5609, -9.2602$, and the grayscale version is $41.3678, -2.2073, 2.2476$.

A 20% lighter version of the original color is $61.6059, 3.6437, 14.5172$, and $23.5605, 3.5068, 8.8278$ is the 20% darker color. If you saturate the color by 10%, you get $38.8489, 6.0328, 13.7749$, and if you desaturate by 10%, it is $43.4570, 1.6698, 9.4431$.

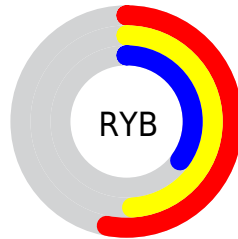
Distribution



Red (53%)

Green (43%)

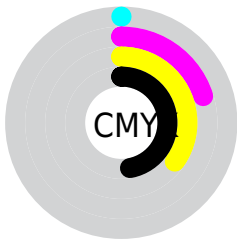
Blue (35%)



Red (53%)

Yellow (49%)

Blue (35%)

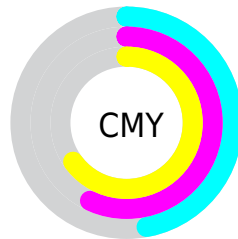


Cyan (0%)

Magenta (20%)

Yellow (35%)

Black (47%)



Cyan (47%)

Magenta (57%)

Yellow (65%)

Brightness & Saturation Gradients

These gradients show how the HunterLab color 41.1008, 3.7506, 11.7580 changes by changing the brightness by 10 percent. The first figure shows a shift by +10% for each color and the second figure -10%.

Similar to the brightness gradients but the following saturation gradients show a change of the HunterLab color 41.1008, 3.7506, 11.7580 by changing the saturation by 10% instead.

■ 41.1008, 3.7506,
11.7580

■ 41.1008, 3.7506,
11.7580

153.1529, 0.8890,
24.3752

■ 31.8726, 3.7865,
10.2518

■ 61.7597, 3.4656,
14.6450

■ 23.4611, 3.7394,
8.6716

■ 73.0928, 3.2352,
16.0520

■ 15.9564, 3.5894,
6.9742

■ 85.0451, 2.9529,
17.4461

■ 9.4849, 3.3075,
6.6394

■ 97.5861, 2.6232,
18.8328

0.0000, NaN, NaN

0.0000, NaN, NaN

■ 110.6892, 2.2492,
20.2164

0.0000, NaN, NaN

124.3313, 1.8340,

0.0000, NaN, NaN

21.5998

0.0000, NaN, NaN

138.4920, 1.3798,
22.9854

■ 41.1008, 3.7506,
11.7580

■ 41.1008, 3.7506,
11.7580

■ 38.8489, 6.0328,
13.7749

■ 43.4570, 1.6698,
9.4431

■ 36.7088, 8.5289,
15.4544

■ 45.9052, -0.2169,
6.8629

■ 34.6930, 11.2386,
16.7584

■ 48.4381, -1.9246,
4.0488

■ 32.8137, 14.1524,
17.6501

■ 51.0482, -3.4678,
1.0276

■ 31.0833, 17.2458,
18.1019

■ 53.7291, -4.8608,
-2.1776

■ 29.5129, 20.4696,
18.1171

■ 56.4750, -6.1172,
-5.5468

■ 28.7200, 22.2117,
18.0860

■ 59.2809, -7.2495,
-9.0631

■ 62.1425, -8.2696,
-12.7118

■ 65.0556, -9.1878,
-16.4804

Harmonies

Analogous

The Analogous color harmony consists of three colors that are next to each other on the color wheel.



41.1018, 9.1383, 8.4246



41.1008, 3.7506, 11.7580



41.1018, -2.9458, 12.6942

Triad

The Triadic color harmony groups three colors that are evenly spaced from another and form a triangle on the color wheel.



41.1018, 3.7490, 11.7586



41.1018, -14.2903, 1.5143



41.1018, 5.1352, -9.3827

Complementary

The Complementary color scheme is a pair of colors which are on the opposite of each other on the color wheel.



41.1008, 3.7506, 11.7580



40.4866, -5.5609, -9.2602

Split Complementary

Split-complementary colors differ from the complementary color scheme. The scheme consists of three colors, the original color and two neighbors of the complement color.



41.1018, -1.4393, -11.9859



41.1008, 3.7506, 11.7580



41.1018, -12.4201, -5.0922

Square

The Square scheme is like the rectangle color scheme, but the four colors are evenly spaced on the color wheel.



41.1018, 3.7490, 11.7586



41.1018, -13.0952, 7.3671



41.1018, -7.8199, -10.3029



41.1018, 9.9740, -3.6529

Rectangle

The Rectangle color scheme consists of four colors that form a rectangle on the color wheel.



41.1008, 3.7506, 11.7580



41.1018, -7.1813, 11.9796



41.1018, -7.8199, -10.3029



41.1018, 3.0404, -10.6907

Sweetspot

The Sweet Spot groups the original color and five complimentary colors.



41.1018, 3.7490, 11.7586



62.3864, -1.3001, 7.5247



36.9457, 17.0082, -3.6570



29.8255, -0.4906, 3.8389



83.1908, -4.4389, 4.5199



31.6988, -1.6914, 1.7223

Same Dimension

The Same Dimension uses a secret algorithm to generate beautiful new colors.



41.1018, 3.7490, 11.7586



52.3567, 7.1722, 17.6135



47.4138, -6.8546, 17.2774



23.1856, -0.5687, 2.6356



27.9726, 21.5297, 17.6135



2.8289, 0.5640, 1.7531

Inverse Universe

The Inverse Universe completely reimagines the original color for something new.



40.4866, -5.5609, -9.2602



51.3721, -7.6154, -15.8531



34.2282, 5.1367, -19.1662



23.1038, -1.8213, -0.1813



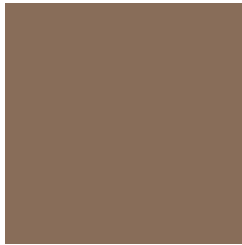
26.2187, 0.4257, -33.6900



2.7344, -0.8856, -1.5061

Previews

White Background



This preview shows how the HunterLab color 41.1008, 3.7506, 11.7580 looks on a white background.

Color Contrast Check

Large Text (above 18pt) WCAG AA ✓ Pass

Any Text WCAG AA ✓ Pass

Large Text (above 18pt) WCAG AAA ✓ Pass

Any Text WCAG AAA × Fail

Black Background



This preview shows how the HunterLab color 41.1008, 3.7506, 11.7580 looks on a black background.

Color Contrast Check

Large Text (above 18pt) WCAG AA ✓ Pass

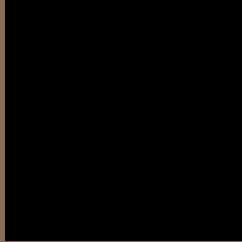
Any Text WCAG AA × Fail

Large Text (above 18pt) WCAG AAA × Fail

Any Text WCAG AAA × Fail

If you want to check with other color combinations, try the [Color Contrast Checker](#).

HunterLab 41.1008, 3.7506, 11.7580 Background



This preview shows how black text looks on a background with the HunterLab color 41.1008, 3.7506, 11.7580.



This preview shows how white text looks on a background with the HunterLab color 41.1008, 3.7506,

Color Blindness Simulation

Color vision deficiency is a very complex topic, and I could not describe the different causes any better than Wikipedia does, so if you want to learn more, you should check out their [article about color blindness](#).

Dichromacy



Original Color

41.1008, 3.7506, 11.7580

Protanopia

41.1431, -2.8805, 11.0387

Deuteranopia

41.1600, 2.6079, 11.7940



Tritanopia

41.2455, 9.3496, 2.6948

Trichromacy



Original Color

41.1008, 3.7506, 11.7580

Protanomaly

41.0348, -0.5061, 11.3006

Deuteranomaly

41.2602, 2.9442, 11.8947

Tritanomaly

41.1565, 7.2962, 6.2352

Monochromacy



Original Color

41.1008, 3.7506, 11.7580

Achromatopsia

41.4054, -2.2093, 2.2496

Achromatomaly

41.3060, -0.2258, 5.8761

CSS Examples

Text

The CSS property to change the color of the text to HunterLab 41.1008, 3.7506, 11.7580 is called "color". The color property can be set on classes, ids or directly on the HTML element.

This example shows how text in the color `rgb(136, 109, 89)` looks like.

```
.text, #text, p{  
    color:rgb(136, 109, 89)  
}
```

If you want to add a text shadow in that color use the text-shadow property, you can generate a text shadow directly with our [CSS Text Shadow Generator](#).

Here you see how black text with a 4 pixel rgb(136, 109, 89) colored shadow looks like.

```
.shadow{ text-shadow: 4px 4px 2px rgb(136, 109, 89) }
```

Border

The CSS property to change the border of an element to HunterLab 41.1008, 3.7506, 11.7580 is called "border". The border property can be set on classes, ids or directly on the HTML element.

This example shows the color as border, it can be applied via the CSS property "border" or "border-color".

```
.border, #border, table{ border:4px solid rgb(136, 109, 89) }
```


If only the border color should be changed use the property border-color.

```
.border{ border-color:rgb(136, 109, 89) }
```

If you want to add a box shadow in that color use:

Here you see how a box with a 4 pixel rgb(136, 109, 89) colored shadow looks like.

```
.boxshadow{ -moz-box-shadow:4px 4px 4px  
4px rgb(136, 109, 89); -webkit-box-  
shadow:4px 4px 4px 4px rgb(136, 109, 89);  
box-shadow:4px 4px 4px 4px rgb(136, 109,  
89) }
```

Background

The CSS property to change the background color of an element to HunterLab 41.1008, 3.7506, 11.7580 is called "background". The background property can be set on classes, ids or directly on the HTML element.

```
.background, #background, body{  
background: rgb(136, 109, 89) }
```

If only the background color should be changed can be used:

```
.background{ background-color: rgb(136,  
109, 89) }
```

This example shows the color as background, it is applied via the CSS property "background".

To optimize and compress your CSS code, you can use our [online CSS compressor and optimizer](#) based on csstidy. If you want to create a linear or radial gradient as background or border, check our [CSS Gradient Generator](#).

Hey! You found this booklet interesting? Support Converting Colors with the new Membership Option!

The pro membership hides all ads, plus gives you double the colors in the color bucket, and more awesome pro features!

[Learn more, Memberships starting at \\$2.50/m!](#)

**Follow me
on Twitter!**

@ConvertingColor