

# Converting Colors

HunterLab(40.9819, 3.6764,  
11.1180)

Have a look what the booklet for  
HunterLab(40.9819, 3.6764,  
11.1180) contains.

<b>HunterLab(41.0408, 3.6334, 11.0542)</b> .....	3
<b><i>Conversions</i></b> .....	4
<b><i>Details</i></b> .....	6
<b><i>Harmonies</i></b> .....	12
<b><i>Previews</i></b> .....	24
<b><i>Color Blindness Simulation</i></b> .....	28
<b><i>CSS Examples</i></b> .....	31

# Color

**HunterLab(41.0408, 3.6334,  
11.0542)**

# Conversions

## Conversions Part 1

Format	Color
Hex	876D5B
RGB	135, 109, 91
RGB Percent	53%, 43%, 36%
CMY	0.4706, 0.5725, 0.6431
CMYK	0.00, 0.19, 0.33, 0.47
HSL	25°, 19%, 44%
HSV	25°, 33%, 53%
XYZ	17.3486, 16.8435, 12.2343
YIQ	114.7220, 21.2740, -0.0860

# Conversions

## Conversions Part 2

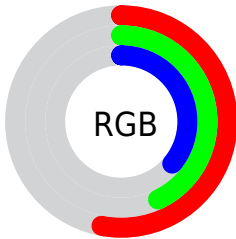
<b>Format</b>	<b>Color</b>
<b>R<sub>YB</sub></b>	135, 121, 91
Decimal	8875355
CIE <sub>Lab</sub>	48.06, 7.49, 13.94
CIE <sub>LCh</sub>	48, 15.830, 61.746
Yxy	16.8443, 0.3737, 0.3628
Android (android.graphics.Color)	4287065435 (0xFF876D5B)
YUV	114.7220, -11.6949, 17.7838
Hunter-Lab	41.0408, 3.6334, 11.0542

# Details

The HunterLab color **41.0408, 3.6334, 11.0542** is a dark color, and the websafe version is hex **996666**. A complement of this color would be **40.8600, -5.7641, -8.1836**, and the grayscale version is **41.3370, -2.2056, 2.2459**.

A 20% lighter version of the original color is **61.5496, 3.5500, 13.7145**, and **23.4937, 3.3516, 8.2701** is the 20% darker color. If you saturate the color by 10%, you get **38.7381, 5.9584, 13.0860**, and if you desaturate by 10%, it is **43.4493, 1.5058, 8.7456**.

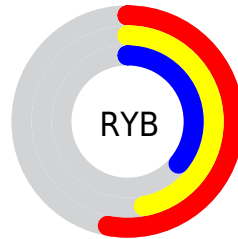
# Distribution



Red (53%)

Green (43%)

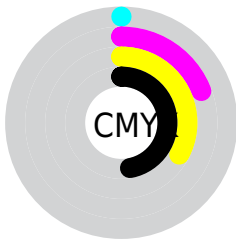
Blue (36%)



Red (53%)

Yellow (47%)

Blue (36%)

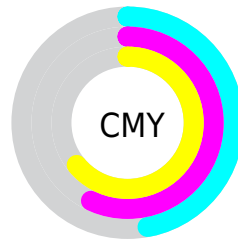


Cyan (0%)

Magenta (19%)

Yellow (33%)

Black (47%)



Cyan (47%)

Magenta (57%)

Yellow (64%)

# Brightness & Saturation Gradients

These gradients show how the HunterLab color 41.0408, 3.6334, 11.0542 changes by changing the brightness by 10 percent. The first figure shows a shift by +10% for each color and the second figure -10%.

Similar to the brightness gradients but the following saturation gradients show a change of the HunterLab color 41.0408, 3.6334, 11.0542 by changing the saturation by 10% instead.



■ 41.0408, 3.6334,  
11.0542

■ 41.0408, 3.6334,  
11.0542

153.0599, 0.7153,  
23.0895

■ 31.8175, 3.6774,  
9.6396

■ 61.6910, 3.3338,  
13.7819

■ 23.4114, 3.6388,  
8.1622

■ 73.0201, 3.0966,  
15.1180

■ 15.9126, 3.4982,  
6.5833

■ 84.9687, 2.8080,  
16.4456

■ 9.4481, 3.2266,  
6.6136

■ 97.5060, 2.4720,  
17.7697

0.0000, NaN, NaN

0.0000, NaN, NaN

■ 110.6057, 2.0922,  
19.0937

0.0000, NaN, NaN

124.2446, 1.6712,

0.0000, NaN, NaN

138.4021, 1.2116,  
21.7518

■ 41.0408, 3.6334,  
11.0542

■ 41.0408, 3.6334,  
11.0542

■ 38.7381, 5.9584,  
13.0860

■ 43.4493, 1.5058,  
8.7456

■ 36.5495, 8.4937,  
14.8017

■ 45.9511, -0.4321,  
6.1921

■ 34.4880, 11.2395,  
16.1625

■ 48.5384, -2.1959,  
3.4237

■ 32.5668, 14.1869,  
17.1292

■ 51.2037, -3.8000,  
0.4659

■ 30.7994, 17.3114,  
17.6699

■ 53.9402, -5.2589,  
-2.6594

■ 29.1990, 20.5668,  
17.7692

■ 56.7421, -6.5861,  
-5.9339

■ 28.1172, 22.9708,  
17.7278

■ 59.6043, -7.7941,  
-9.3417

■ 62.5224, -8.8944,  
-12.8696

■ 65.4923, -9.8974,  
-16.5062

# Harmonies

## Analogous

The Analogous color harmony consists of three colors that are next to each other on the color wheel.



41.0418, 8.4958, 7.7870



41.0408, 3.6334, 11.0542



41.0418, -2.5563, 12.0670

# Triad

The Triadic color harmony groups three colors that are evenly spaced from another and form a triangle on the color wheel.



41.0418, 3.6319, 11.0548



41.0418, -13.4887, 1.8855



41.0418, 4.3005, -8.6817

# Complementary

The Complementary color scheme is a pair of colors which are on the opposite of each other on the color wheel.



41.0408, 3.6334, 11.0542



40.8600, -5.7641, -8.1836

# Split Complementary

Split-complementary colors differ from the complementary color scheme. The scheme consists of three colors, the original color and two neighbors of the complement color.



41.0418, -1.8266, -10.8610



41.0408, 3.6334, 11.0542



41.0418, -11.8871, -4.2229

# Square

The Square scheme is like the rectangle color scheme, but the four colors are evenly spaced on the color wheel.



41.0418, 3.6319, 11.0548



41.0418, -12.2166, 7.2690



41.0418, -7.7084, -9.1202



41.0418, 8.8977, -3.5326



# Rectangle

The Rectangle color scheme consists of four colors that form a rectangle on the color wheel.



41.0408, 3.6334, 11.0542



41.0418, -6.5351, 11.4688



41.0418, -7.7084, -9.1202



41.0418, 2.3394, -9.8177

# Sweetspot

The Sweet Spot groups the original color and five complimentary colors.



41.0418, 3.6319, 11.0548



62.3023, -1.1575, 7.4337



37.3189, 15.8482, -3.6612



29.7803, -0.4137, 3.7904



83.1908, -4.4389, 4.5199



31.6988, -1.6914, 1.7223



# Same Dimension

The Same Dimension uses a secret algorithm to generate beautiful new colors.



41.0418, 3.6319, 11.0548



52.6633, 7.0999, 16.8125



46.9378, -6.3010, 16.3101



22.3125, -0.5073, 2.5015



27.0467, 21.9407, 17.0502



1.9775, 0.4429, 1.2263



# Inverse Universe

The Inverse Universe completely reimagines the original color for something new.



40.8600, -5.7641, -8.1836



52.3631, -8.1018, -14.3544



34.9718, 4.2139, -17.2373



22.2884, -1.7961, -0.1321



26.2646, -0.5967, -31.5405

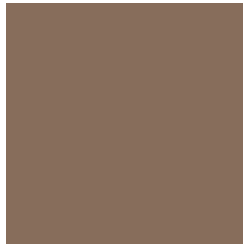


1.9569, -0.6586, -1.0243



# Previews

## White Background



This preview shows how the HunterLab color 41.0408, 3.6334, 11.0542 looks on a white background.

## Color Contrast Check

Large Text (above 18pt) WCAG AA ✓ Pass

Any Text WCAG AA ✓ Pass

Large Text (above 18pt) WCAG AAA ✓ Pass

Any Text WCAG AAA × Fail



# Black Background



This preview shows how the HunterLab color 41.0408, 3.6334, 11.0542 looks on a black background.

## Color Contrast Check

Large Text (above 18pt) WCAG AA ✓ Pass

Any Text WCAG AA × Fail

Large Text (above 18pt) WCAG AAA × Fail

Any Text WCAG AAA × Fail

If you want to check with other color combinations, try the [Color Contrast Checker](#).

## HunterLab 41.0408, 3.6334, 11.0542 Background



This preview shows how black text looks on a background with the HunterLab color 41.0408, 3.6334, 11.0542.



This preview shows how white text looks on a background with the HunterLab color 41.0408, 3.6334,



# Color Blindness Simulation

Color vision deficiency is a very complex topic, and I could not describe the different causes any better than Wikipedia does, so if you want to learn more, you should check out their [article about color blindness](#).

## Dichromacy



### Original Color

41.0408, 3.6334, 11.0542

### Protanopia

41.0973, -2.9555, 10.3320

### Deuteranopia

41.1020, 2.4956, 11.0933



## Tritanopia

41.0382, 8.6849, 2.4397

# Trichromacy



## Original Color

41.0408, 3.6334, 11.0542

## Protanomaly

40.9837, -0.5976, 10.5957

## Deuteranomaly

41.2014, 2.8295, 11.1948

## Tritanomaly

40.9759, 6.7588, 5.6374

# Monochromacy



## Original Color

41.0408, 3.6334, 11.0542

## Achromatopsia

41.4054, -2.2093, 2.2496

## Achromatomaly

41.2170, -0.5311, 5.7738

# CSS Examples

## Text

The CSS property to change the color of the text to HunterLab 41.0408, 3.6334, 11.0542 is called "color". The color property can be set on classes, ids or directly on the HTML element.

This example shows how text in the color `rgb(135, 109, 91)` looks like.

```
.text, #text, p{  
    color:rgb(135, 109, 91)  
}
```

If you want to add a text shadow in that color use the text-shadow property, you can generate a text shadow directly with our [CSS Text Shadow Generator](#).

Here you see how black text with a 4 pixel rgb(135, 109, 91) colored shadow looks like.

```
.shadow{ text-shadow: 4px 4px 2px rgb(135, 109, 91) }
```

## Border

The CSS property to change the border of an element to HunterLab 41.0408, 3.6334, 11.0542 is called "border". The border property can be set on classes, ids or directly on the HTML element.

This example shows the color as border, it can be applied via the CSS property "border" or "border-color".

```
.border, #border, table{ border:4px solid rgb(135, 109, 91) }
```



If only the border color should be changed use the property `border-color`.

```
.border{ border-color:rgb(135, 109, 91) }
```

If you want to add a box shadow in that color use:

Here you see how a box with a 4 pixel `rgb(135, 109, 91)` colored shadow looks like.

```
.boxshadow{ -moz-box-shadow:4px 4px 4px  
4px rgb(135, 109, 91); -webkit-box-  
shadow:4px 4px 4px 4px rgb(135, 109, 91);  
box-shadow:4px 4px 4px 4px rgb(135, 109,  
91) }
```

# Background

The CSS property to change the background color of an element to HunterLab 41.0408, 3.6334, 11.0542 is called "background". The background property can be set on classes, ids or directly on the HTML element.

```
.background, #background, body{  
background: rgb(135, 109, 91) }
```

If only the background color should be changed can be used:

```
.background{ background-color: rgb(135,  
109, 91) }
```

This example shows the color as background, it is applied via the CSS property "background".

To optimize and compress your CSS code, you can use our [online CSS compressor and optimizer](#) based on csstidy. If you want to create a linear or radial gradient as background or border, check our [CSS Gradient Generator](#).

Hey! You found this booklet interesting? Support Converting Colors with the new Membership Option!

The pro membership hides all ads, plus gives you double the colors in the color bucket, and more awesome pro features!

**[Learn more, Memberships starting at \\$2.50/m!](#)**

**Follow me  
on Twitter!**

@ConvertingColor