

# Converting Colors

HunterLab(41.0591, 63.7554,  
5.3526)

Have a look what the booklet for  
HunterLab(41.0591, 63.7554,  
5.3526) contains.

<b>HunterLab(41.0503, 63.9051, 5.5173)</b> .....	3
<b><i>Conversions</i></b> .....	4
<b><i>Details</i></b> .....	6
<b><i>Harmonies</i></b> .....	12
<b><i>Previews</i></b> .....	24
<b><i>Color Blindness Simulation</i></b> .....	28
<b><i>CSS Examples</i></b> .....	31

# Color

**HunterLab(41.0503, 63.9051,  
5.5173)**

# Conversions

## Conversions Part 1

Format	Color
Hex	D6276D
RGB	214, 39, 109
RGB Percent	84%, 15%, 43%
CMY	0.1608, 0.8470, 0.5725
CMYK	0.00, 0.82, 0.49, 0.16
HSL	336°, 69%, 50%
HSV	336°, 82%, 84%
XYZ	31.2173, 16.8513, 16.0753
YIQ	99.3050, 81.8300, 58.8700

# Conversions

## Conversions Part 2

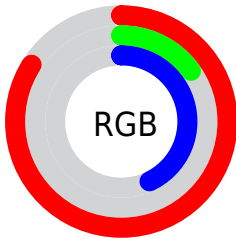
<b>Format</b>	<b>Color</b>
<b>R<sub>YB</sub></b>	214, 39, 109
Decimal	14034797
CIE <sub>Lab</sub>	48.07, 68.80, 4.77
CIE <sub>LCh</sub>	48, 68.965, 3.962
Yxy	16.8522, 0.4867, 0.2627
Android (android.graphics.Color)	4292224877 (0xFFD6276D)
YUV	99.3050, 4.7796, 100.5875
Hunter-Lab	41.0503, 63.9051, 5.5173

# Details

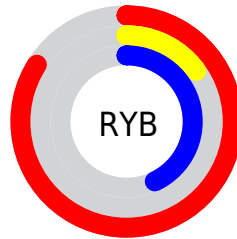
The HunterLab color **41.0503, 63.9051, 5.5173** is a dark color, and the websafe version is hex **CC0066**. The color can be described as dark washed rose. A complement of this color would be **71.0905, -49.2856, 20.9322**, and the grayscale version is **35.4014, -1.8889, 1.9234**.

A 20% lighter version of the original color is **58.0506, 59.9531, 2.8523**, and **26.6835, 46.9997, 7.1386** is the 20% darker color. If you saturate the color by 10%, you get **39.4510, 66.9714, 8.7928**, and if you desaturate by 10%, it is **43.5576, 58.4848, 2.8714**.

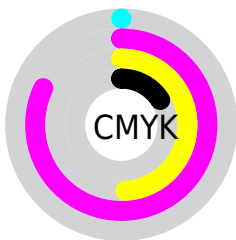
# Distribution



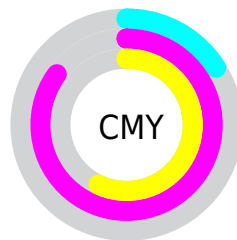
- Red (84%)
- Green (15%)
- Blue (43%)



- Red (84%)
- Yellow (15%)
- Blue (43%)



- Cyan (0%)
- Magenta (82%)
- Yellow (49%)
- Black (16%)



- Cyan (16%)
- Magenta (85%)
- Yellow (57%)

# Brightness & Saturation Gradients

These gradients show how the HunterLab color 41.0503, 63.9051, 5.5173 changes by changing the brightness by 10 percent. The first figure shows a shift by +10% for each color and the second figure -10%.

Similar to the brightness gradients but the following saturation gradients show a change of the HunterLab color 41.0503, 63.9051, 5.5173 by changing the saturation by 10% instead.



41.0503, 63.9051,  
5.5173

41.0503, 63.9051,  
5.5173

153.0750, 81.1887,  
13.5559

31.8264, 61.6200,  
4.7248

61.7022, 68.3635,  
7.1596

23.4195, 59.4397,  
3.9446

73.0319, 70.4750,  
8.0102

15.9197, 57.6641,  
3.1702

84.9811, 72.4921,  
8.8818

9.4540, 57.2290,  
2.6042

97.5190, 74.4133,  
9.7745

0.0000, INF, NaN

0.0000, INF, NaN

110.6192, 76.2403,  
10.6884

0.0000, NaN, NaN

124.2586, 77.9761,

0.0000, NaN, NaN

11.6234

0.0000, NaN, NaN

138.4167, 79.6242,  
12.5793

■ 41.0503, 63.9051,  
5.5173

■ 41.0503, 63.9051,  
5.5173

■ 39.4510, 66.9714,  
8.7928

■ 43.5576, 58.4848,  
2.8714

■ 38.6799, 67.9605,  
11.6615

■ 46.9501, 51.2296,  
1.0290

■ 51.1493, 42.7892,  
0.0198

■ 56.0508, 33.7335,  
-0.2280

■ 61.5496, 24.4612,  
0.1706

■ 67.5522, 15.2096,  
1.0962

■ 73.9797, 6.0999,  
2.4437

■ 80.7683, -2.8190,  
4.1278

■ 87.8666, -11.5387,  
6.0816

# Harmonies

## Analogous

The Analogous color harmony consists of three colors that are next to each other on the color wheel.



41.0515, 55.9920, -26.0680



41.0503, 63.9051, 5.5173



41.0515, 50.6630, 21.4160

# Triad

The Triadic color harmony groups three colors that are evenly spaced from another and form a triangle on the color wheel.



41.0515, 63.9010, 5.5184



41.0515, -27.4632, 25.7643



41.0515, -22.6767, -72.0520

# Complementary

The Complementary color scheme is a pair of colors which are on the opposite of each other on the color wheel.



41.0503, 63.9051, 5.5173



71.0905, -49.2856, 20.9322

# Split Complementary

Split-complementary colors differ from the complementary color scheme. The scheme consists of three colors, the original color and two neighbors of the complement color.



41.0515, -37.1231, -36.2868



41.0503, 63.9051, 5.5173



41.0515, -39.3407, 18.5964

# Square

The Square scheme is like the rectangle color scheme, but the four colors are evenly spaced on the color wheel.



41.0515, 63.9010, 5.5184



41.0515, -5.7361, 27.3136



41.0515, -42.3533, -1.3452



41.0515, 1.4754, -84.5177



# Rectangle

The Rectangle color scheme consists of four colors that form a rectangle on the color wheel.



41.0503, 63.9051, 5.5173



41.0515, 33.2331, 25.5180



41.0515, -42.3533, -1.3452



41.0515, -28.5995, -61.5696

# Sweetspot

The Sweet Spot groups the original color and five complimentary colors.



41.0515, 63.9010, 5.5184



79.7667, 22.4608, 0.8794



34.9812, 63.1170, -85.1665



35.7038, 12.2450, 0.2232

0.0000, NaN, NaN



46.2646, -2.4686, 2.5136



# Same Dimension

The Same Dimension uses a secret algorithm to generate beautiful new colors.



41.0515, 63.9010, 5.5184



47.3198, 82.5926, 13.8427



41.6186, 53.8506, 23.8516



35.3586, 1.8670, 1.3160



30.1040, 52.9538, 8.6013



7.5015, 13.4003, 0.5551



# Inverse Universe

The Inverse Universe completely reimagines the original color for something new.



41.0515, 63.9010, 5.5184



47.3198, 82.5926, 13.8427



67.0768, -30.0249, -15.4260



35.3586, 1.8670, 1.3160



30.1040, 52.9538, 8.6013



7.5015, 13.4003, 0.5551



# Previews

## White Background



This preview shows how the HunterLab color 41.0503, 63.9051, 5.5173 looks on a white background.

## Color Contrast Check

Large Text (above 18pt) WCAG AA ✓ Pass

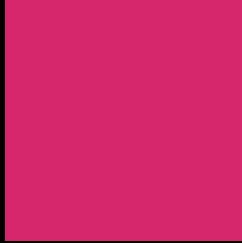
Any Text WCAG AA ✓ Pass

Large Text (above 18pt) WCAG AAA ✓ Pass

Any Text WCAG AAA × Fail



# Black Background



This preview shows how the HunterLab color 41.0503, 63.9051, 5.5173 looks on a black background.

## Color Contrast Check

Large Text (above 18pt) WCAG AA ✓ Pass

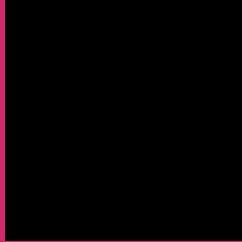
Any Text WCAG AA × Fail

Large Text (above 18pt) WCAG AAA × Fail

Any Text WCAG AAA × Fail

If you want to check with other color combinations, try the [Color Contrast Checker](#).

## HunterLab 41.0503, 63.9051, 5.5173 Background



This preview shows how black text looks on a background with the HunterLab color 41.0503, 63.9051, 5.5173.



This preview shows how white text looks on a background with the HunterLab color 41.0503, 63.9051,



# Color Blindness Simulation

Color vision deficiency is a very complex topic, and I could not describe the different causes any better than Wikipedia does, so if you want to learn more, you should check out their [article about color blindness](#).

## Dichromacy



### Original Color

41.0503, 63.9051, 5.5173

### Protanopia

41.5210, 1.9181, -15.5838

### Deuteranopia

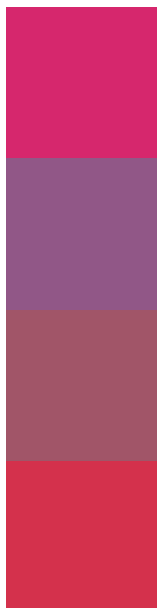
41.3929, 2.5687, 7.9159



## Tritanopia

41.0812, 53.9782, 20.6724

# Trichromacy



## Original Color

41.0503, 63.9051, 5.5173

## Protanomaly

38.1908, 24.1127, -11.6300

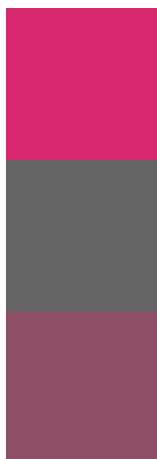
## Deuteranomaly

38.8247, 26.0552, 4.3795

## Tritanomaly

40.8846, 57.4842, 16.2837

# Monochromacy



## Original Color

41.0503, 63.9051, 5.5173

## Achromatopsia

35.3231, -1.8847, 1.9192

## Achromatomaly

34.5684, 22.5711, -0.3127

# CSS Examples

## Text

The CSS property to change the color of the text to HunterLab 41.0503, 63.9051, 5.5173 is called "color". The color property can be set on classes, ids or directly on the HTML element.

This example shows how text in the color `rgb(214, 39, 109)` looks like.

```
.text, #text, p{  
    color:rgb(214, 39, 109)  
}
```

If you want to add a text shadow in that color use the text-shadow property, you can generate a text shadow directly with our [CSS Text Shadow Generator](#).

Here you see how black text with a 4 pixel rgb(214, 39, 109) colored shadow looks like.

```
.shadow{ text-shadow: 4px 4px 2px rgb(214, 39, 109) }
```

## Border

The CSS property to change the border of an element to HunterLab 41.0503, 63.9051, 5.5173 is called "border". The border property can be set on classes, ids or directly on the HTML element.

This example shows the color as border, it can be applied via the CSS property "border" or "border-color".

```
.border, #border, table{ border:4px solid rgb(214, 39, 109) }
```



If only the border color should be changed use the property `border-color`.

```
.border{ border-color:rgb(214, 39, 109) }
```

If you want to add a box shadow in that color use:

Here you see how a box with a 4 pixel `rgb(214, 39, 109)` colored shadow looks like.

```
.boxshadow{ -moz-box-shadow:4px 4px 4px  
4px rgb(214, 39, 109); -webkit-box-  
shadow:4px 4px 4px 4px rgb(214, 39, 109);  
box-shadow:4px 4px 4px 4px rgb(214, 39,  
109) }
```

# Background

The CSS property to change the background color of an element to HunterLab 41.0503, 63.9051, 5.5173 is called "background". The background property can be set on classes, ids or directly on the HTML element.

```
.background, #background, body{  
background: rgb(214, 39, 109) }
```

If only the background color should be changed can be used:

```
.background{ background-color: rgb(214, 39,  
109) }
```

This example shows the color as background, it is applied via the CSS property "background".

To optimize and compress your CSS code, you can use our [online CSS compressor and optimizer](#) based on csstidy. If you want to create a linear or radial gradient as background or border, check our [CSS Gradient Generator](#).

Hey! You found this booklet interesting? Support Converting Colors with the new Membership Option!

The pro membership hides all ads, plus gives you double the colors in the color bucket, and more awesome pro features!

**[Learn more, Memberships starting at \\$2.50/m!](#)**

**Follow me  
on Twitter!**

@ConvertingColor