

Converting Colors

HunterLab(41.1456, 55.6961,
2.8412)

Have a look what the booklet for
HunterLab(41.1456, 55.6961,
2.8412) contains.

HunterLab(41.1139, 55.7394, 2.9198)	3
<i>Conversions</i>	4
<i>Details</i>	6
<i>Harmonies</i>	12
<i>Previews</i>	24
<i>Color Blindness Simulation</i>	28
<i>CSS Examples</i>	31

Color

**HunterLab(41.1139, 55.7394,
2.9198)**

Conversions

Conversions Part 1

Format	Color
Hex	CC3873
RGB	204, 56, 115
RGB Percent	80%, 22%, 45%
CMY	0.2000, 0.7804, 0.5490
CMYK	0.00, 0.73, 0.44, 0.20
HSL	336°, 59%, 51%
HSV	336°, 73%, 80%
XYZ	29.4105, 16.9035, 17.9322
YIQ	106.9780, 69.2690, 49.7250

Conversions

Conversions Part 2

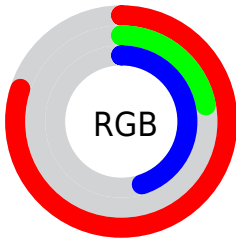
Format	Color
R_{YB}	204, 56, 115
Decimal	13383795
CIE _{Lab}	48.14, 61.73, 0.96
CIE _{LCh}	48, 61.734, 0.888
Yxy	16.9045, 0.4578, 0.2631
Android (android.graphics.Color)	4291573875 (0xFFCC3873)
YUV	106.9780, 3.9548, 85.0883
Hunter-Lab	41.1139, 55.7394, 2.9198

Details

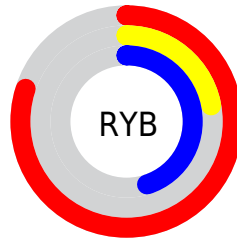
The HunterLab color **41.1139, 55.7394, 2.9198** is a dark color, and the websafe version is hex **CC3366**. The color can be described as dark muted rose. A complement of this color would be **67.8759, -44.2652, 17.6470**, and the grayscale version is **38.3045, -2.0438, 2.0812**.

A 20% lighter version of the original color is **60.0705, 56.0286, 1.9118**, and **25.1685, 44.7119, 3.7821** is the 20% darker color. If you saturate the color by 10%, you get **38.7937, 60.7425, 5.4639**, and if you desaturate by 10%, it is **44.2744, 48.9648, 1.1274**.

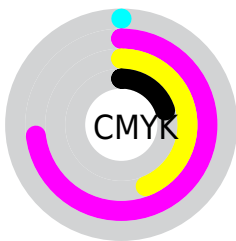
Distribution



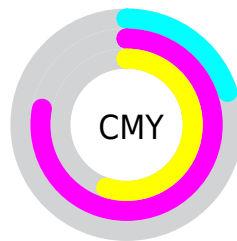
- Red (80%)
- Green (22%)
- Blue (45%)



- Red (80%)
- Yellow (22%)
- Blue (45%)



- Cyan (0%)
- Magenta (73%)
- Yellow (44%)
- Black (20%)



- Cyan (20%)
- Magenta (78%)
- Yellow (55%)

Brightness & Saturation Gradients

These gradients show how the HunterLab color 41.1139, 55.7394, 2.9198 changes by changing the brightness by 10 percent. The first figure shows a shift by +10% for each color and the second figure -10%.

Similar to the brightness gradients but the following saturation gradients show a change of the HunterLab color 41.1139, 55.7394, 2.9198 by changing the saturation by 10% instead.

41.1139, 55.7394,
2.9198

41.1139, 55.7394,
2.9198

153.1735, 71.1883,
9.4017

31.8848, 53.5797,
2.3620

61.7750, 59.8400,
4.1464

23.4722, 51.4417,
1.8419

73.1089, 61.7480,
4.8092

15.9661, 49.5334,
1.3635

85.0621, 63.5550,
5.5032

9.4930, 48.5242,
0.9350

97.6038, 65.2630,
6.2273

0.0000, INF, NaN

0.0000, INF, NaN

110.7077, 66.8759,
6.9802

0.0000, NaN, NaN

124.3506, 68.3980,

0.0000, NaN, NaN

7.7608

0.0000, NaN, NaN

138.5120, 69.8340,
8.5683

■ 41.1139, 55.7394,
2.9198

■ 41.1139, 55.7394,
2.9198

■ 38.7937, 60.7425,
5.4639

■ 44.2744, 48.9648,
1.1274

■ 37.3243, 63.5245,
8.5809

■ 48.1990, 41.0431,
0.1181

■ 36.6554, 64.4072,
11.0220

■ 52.7916, 32.5141,
-0.1695

■ 57.9530, 23.7625,
0.1585

■ 63.5945, 15.0198,
0.9898

■ 69.6410, 6.4058,
2.2249

■ 76.0316, -2.0301,
3.7823

■ 82.7173, -10.2781,
5.5981

■ 89.6588, -18.3484,
7.6234

Harmonies

Analogous

The Analogous color harmony consists of three colors that are next to each other on the color wheel.



41.1150, 47.1123, -25.7943



41.1139, 55.7394, 2.9198



41.1150, 46.0811, 19.1428

Triad

The Triadic color harmony groups three colors that are evenly spaced from another and form a triangle on the color wheel.



41.1150, 55.7358, 2.9209



41.1150, -23.5400, 25.0285



41.1150, -22.5501, -58.6192

Complementary

The Complementary color scheme is a pair of colors which are on the opposite of each other on the color wheel.



41.1139, 55.7394, 2.9198



67.8759, -44.2652, 17.6470

Split Complementary

Split-complementary colors differ from the complementary color scheme. The scheme consists of three colors, the original color and two neighbors of the complement color.



41.1150, -35.1038, -27.7464



41.1139, 55.7394, 2.9198



41.1150, -35.5750, 18.5227

Square

The Square scheme is like the rectangle color scheme, but the four colors are evenly spaced on the color wheel.



41.1150, 55.7358, 2.9209



41.1150, -2.9176, 26.4914



41.1150, -39.2637, 1.5432



41.1150, -1.4693, -71.6340

Rectangle

The Rectangle color scheme consists of four colors that form a rectangle on the color wheel.



41.1139, 55.7394, 2.9198



41.1150, 31.6300, 23.9462



41.1150, -39.2637, 1.5432



41.1150, -27.7169, -49.3498

Sweetspot

The Sweet Spot groups the original color and five complimentary colors.



41.1150, 55.7358, 2.9209



82.0337, 19.0411, 1.3087



36.3192, 54.1803, -69.9293



37.0024, 10.2331, 0.4415

0.0000, NaN, NaN



46.2646, -2.4686, 2.5136

Same Dimension

The Same Dimension uses a secret algorithm to generate beautiful new colors.



41.1150, 55.7358, 2.9209



48.7349, 80.5418, 9.2049



41.9585, 45.0817, 21.3553



33.5954, 1.7494, 1.2590



29.1104, 51.2065, 8.3143



6.7234, 12.0375, 0.2864

Inverse Universe

The Inverse Universe completely reimagines the original color for something new.



41.1150, 55.7358, 2.9209



48.7349, 80.5418, 9.2049



64.5619, -27.9070, -13.1678



33.5954, 1.7494, 1.2590



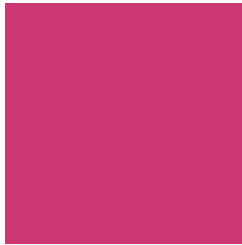
29.1104, 51.2065, 8.3143



6.7234, 12.0375, 0.2864

Previews

White Background



This preview shows how the HunterLab color 41.1139, 55.7394, 2.9198 looks on a white background.

Color Contrast Check

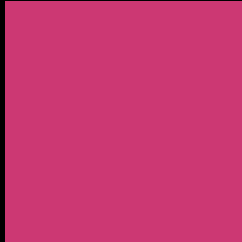
Large Text (above 18pt) WCAG AA ✓ Pass

Any Text WCAG AA ✓ Pass

Large Text (above 18pt) WCAG AAA ✓ Pass

Any Text WCAG AAA × Fail

Black Background



This preview shows how the HunterLab color 41.1139, 55.7394, 2.9198 looks on a black background.

Color Contrast Check

Large Text (above 18pt) WCAG AA ✓ Pass

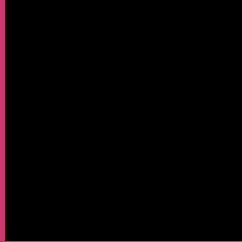
Any Text WCAG AA × Fail

Large Text (above 18pt) WCAG AAA × Fail

Any Text WCAG AAA × Fail

If you want to check with other color combinations, try the [Color Contrast Checker](#).

HunterLab 41.1139, 55.7394, 2.9198 Background



This preview shows how black text looks on a background with the HunterLab color 41.1139, 55.7394, 2.9198.



This preview shows how white text looks on a background with the HunterLab color 41.1139, 55.7394,

Color Blindness Simulation

Color vision deficiency is a very complex topic, and I could not describe the different causes any better than Wikipedia does, so if you want to learn more, you should check out their [article about color blindness](#).

Dichromacy



Original Color

41.1139, 55.7394, 2.9198

Protanopia

41.5210, 1.9181, -15.5838

Deuteranopia

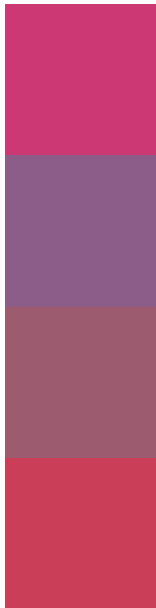
41.3748, 2.8535, 5.2144



Tritanopia

41.0935, 46.3750, 17.5326

Trichromacy



Original Color

41.1139, 55.7394, 2.9198

Protanomaly

39.1121, 20.1565, -11.4231

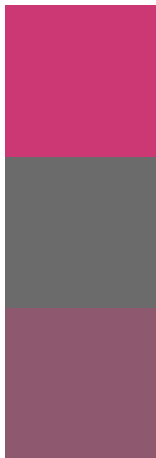
Deuteranomaly

39.6204, 22.2138, 2.2978

Tritanomaly

40.9874, 49.5801, 13.0810

Monochromacy



Original Color

41.1139, 55.7394, 2.9198

Achromatopsia

38.3441, -2.0459, 2.0833

Achromatomaly

37.2237, 18.5828, -0.2344

CSS Examples

Text

The CSS property to change the color of the text to HunterLab 41.1139, 55.7394, 2.9198 is called "color". The color property can be set on classes, ids or directly on the HTML element.

This example shows how text in the color `rgb(204, 56, 115)` looks like.

```
.text, #text, p{  
    color:rgb(204, 56, 115)  
}
```

If you want to add a text shadow in that color use the text-shadow property, you can generate a text shadow directly with our [CSS Text Shadow Generator](#).

Here you see how black text with a 4 pixel rgb(204, 56, 115) colored shadow looks like.

```
.shadow{ text-shadow: 4px 4px 2px rgb(204, 56, 115) }
```

Border

The CSS property to change the border of an element to HunterLab 41.1139, 55.7394, 2.9198 is called "border". The border property can be set on classes, ids or directly on the HTML element.

This example shows the color as border, it can be applied via the CSS property "border" or "border-color".

```
.border, #border, table{ border:4px solid rgb(204, 56, 115) }
```


If only the border color should be changed use the property border-color.

```
.border{ border-color:rgb(204, 56, 115) }
```

If you want to add a box shadow in that color use:

Here you see how a box with a 4 pixel rgb(204, 56, 115) colored shadow looks like.

```
.boxshadow{ -moz-box-shadow:4px 4px 4px  
4px rgb(204, 56, 115); -webkit-box-  
shadow:4px 4px 4px 4px rgb(204, 56, 115);  
box-shadow:4px 4px 4px 4px rgb(204, 56,  
115) }
```

Background

The CSS property to change the background color of an element to HunterLab 41.1139, 55.7394, 2.9198 is called "background". The background property can be set on classes, ids or directly on the HTML element.

```
.background, #background, body{  
background: rgb(204, 56, 115) }
```

If only the background color should be changed can be used:

```
.background{ background-color: rgb(204, 56,  
115) }
```

This example shows the color as background, it is applied via the CSS property "background".

To optimize and compress your CSS code, you can use our [online CSS compressor and optimizer](#) based on csstidy. If you want to create a linear or radial gradient as background or border, check our [CSS Gradient Generator](#).

Hey! You found this booklet interesting? Support Converting Colors with the new Membership Option!

The pro membership hides all ads, plus gives you double the colors in the color bucket, and more awesome pro features!

[Learn more, Memberships starting at \\$2.50/m!](#)

**Follow me
on Twitter!**

@ConvertingColor