

Converting Colors

HunterLab(41.2172, 4.9383,
10.9872)

Have a look what the booklet for
HunterLab(41.2172, 4.9383,
10.9872) contains.

HunterLab(41.1110, 5.2357, 10.8215)	3
<i>Conversions</i>	4
<i>Details</i>	6
<i>Harmonies</i>	12
<i>Previews</i>	24
<i>Color Blindness Simulation</i>	28
<i>CSS Examples</i>	31

Color

**HunterLab(41.1110, 5.2357,
10.8215)**

Conversions

Conversions Part 1

Format	Color
Hex	8A6C5C
RGB	138, 108, 92
RGB Percent	54%, 42%, 36%
CMY	0.4588, 0.5765, 0.6392
CMYK	0.00, 0.22, 0.33, 0.46
HSL	21°, 20%, 45%
HSV	21°, 33%, 54%
XYZ	17.7756, 16.9011, 12.4506
YIQ	115.1460, 23.0160, 1.3840

Conversions

Conversions Part 2

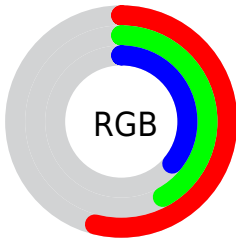
Format	Color
R_{YB}	138, 117, 92
Decimal	9071708
CIE Lab	48.14, 9.49, 13.50
CIE LCh	48, 16.503, 54.911
Yxy	16.9019, 0.3772, 0.3586
Android (android.graphics.Color)	4287261788 (0xFF8A6C5C)
YUV	115.1460, -11.4110, 20.0430
Hunter-Lab	41.1110, 5.2357, 10.8215

Details

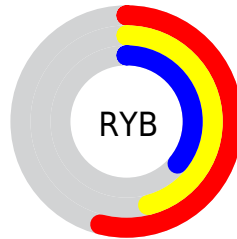
The HunterLab color **41.1110, 5.2357, 10.8215** is a dark color, and the websafe version is hex **996666**. A complement of this color would be **42.4604, -7.2092, -7.5376**, and the grayscale version is **41.4988, -2.2143, 2.2547**.

A 20% lighter version of the original color is **61.6082, 5.2365, 13.4261**, and **23.5817, 4.8476, 8.1171** is the 20% darker color. If you saturate the color by 10%, you get **38.5756, 8.0371, 12.7745**, and if you desaturate by 10%, it is **43.7756, 2.6374, 8.6256**.

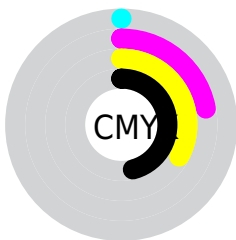
Distribution



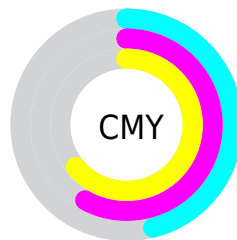
- Red (54%)
- Green (42%)
- Blue (36%)



- Red (54%)
- Yellow (46%)
- Blue (36%)



- Cyan (0%)
- Magenta (22%)
- Yellow (33%)
- Black (46%)



- Cyan (46%)
- Magenta (58%)
- Yellow (64%)

Brightness & Saturation Gradients

These gradients show how the HunterLab color 41.1110, 5.2357, 10.8215 changes by changing the brightness by 10 percent. The first figure shows a shift by +10% for each color and the second figure -10%.

Similar to the brightness gradients but the following saturation gradients show a change of the HunterLab color 41.1110, 5.2357, 10.8215 by changing the saturation by 10% instead.

■ 41.1110, 5.2357,
10.8215

■ 41.1110, 5.2357,
10.8215

153.1687, 3.1107,
22.6580

■ 31.8820, 5.1662,
9.4385

■ 61.7714, 5.1422,
13.4945

■ 23.4696, 5.0053,
7.9969

■ 73.1052, 4.9999,
14.8063

■ 15.9638, 4.7311,
6.4595

■ 85.0581, 4.8016,
16.1112

■ 9.4911, 4.3120,
6.4149

■ 97.5997, 4.5522,
17.4139

0.0000, INF, NaN

0.0000, NaN, NaN

110.7034, 4.2554,
18.7177

0.0000, NaN, NaN

124.3461, 3.9145,

0.0000, NaN, NaN

138.5073, 3.5321,
21.3380

■ 41.1110, 5.2357,
10.8215

■ 41.1110, 5.2357,
10.8215

■ 38.5756, 8.0371,
12.7745

■ 43.7756, 2.6374,
8.6256

■ 36.1819, 11.0516,
14.4419

■ 46.5531, 0.2355,
6.2203

■ 33.9479, 14.2720,
15.7786

■ 49.4329, -1.9866,
3.6358

■ 31.8924, 17.6755,
16.7379

■ 52.4050, -4.0447,
0.8968

■ 30.0351, 21.2149,
17.2786

■ 55.4606, -5.9548,
-1.9766

■ 28.3948, 24.8106,
17.3794

■ 58.5925, -7.7317,
-4.9677

■ 27.4188, 27.1346,
17.3704

■ 61.7940, -9.3895,
-8.0629

■ 65.0598, -10.9408,
-11.2509

■ 68.3849, -12.3968,
-14.5225

Harmonies

Analogous

The Analogous color harmony consists of three colors that are next to each other on the color wheel.



41.1120, 9.7580, 6.9350



41.1110, 5.2357, 10.8215



41.1120, -1.0820, 12.4016

Triad

The Triadic color harmony groups three colors that are evenly spaced from another and form a triangle on the color wheel.



41.1120, 5.2341, 10.8221



41.1120, -13.9130, 3.2779



41.1120, 3.1992, -10.0641

Complementary

The Complementary color scheme is a pair of colors which are on the opposite of each other on the color wheel.



41.1110, 5.2357, 10.8215



42.4604, -7.2092, -7.5376

Split Complementary

Split-complementary colors differ from the complementary color scheme. The scheme consists of three colors, the original color and two neighbors of the complement color.



41.1120, -3.2980, -11.4449



41.1110, 5.2357, 10.8215



41.1120, -12.9229, -3.0886

Square

The Square scheme is like the rectangle color scheme, but the four colors are evenly spaced on the color wheel.



41.1120, 5.2341, 10.8221



41.1120, -11.9261, 8.4994



41.1120, -9.1330, -8.7212



41.1120, 8.5330, -5.1958

Rectangle

The Rectangle color scheme consists of four colors that form a rectangle on the color wheel.



41.1110, 5.2357, 10.8215



41.1120, -5.3611, 12.1442



41.1120, -9.1330, -8.7212



41.1120, 1.0682, -10.9805

Sweetspot

The Sweet Spot groups the original color and five complimentary colors.



41.1120, 5.2341, 10.8221



62.9851, -0.6322, 7.2121



38.0520, 17.2029, -5.2792



29.6122, -0.1270, 3.6092



83.1908, -4.4389, 4.5199



31.6988, -1.6914, 1.7223

Same Dimension

The Same Dimension uses a secret algorithm to generate beautiful new colors.



41.1120, 5.2341, 10.8221



52.0327, 9.7225, 16.3510



47.1489, -5.1266, 16.2304



23.0536, -0.3450, 2.4915



26.3025, 25.8518, 16.6601



2.6726, 0.8730, 1.6621

Inverse Universe

The Inverse Universe completely reimagines the original color for something new.



42.4604, -7.2092, -7.5376



54.1902, -10.3058, -13.1605



36.2782, 3.0681, -16.8887



23.2392, -2.0422, -0.0180



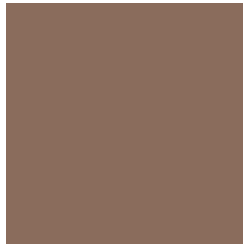
29.0056, -4.1652, -27.2631



2.8874, -1.0941, -1.2471

Previews

White Background



This preview shows how the HunterLab color 41.1110, 5.2357, 10.8215 looks on a white background.

Color Contrast Check

Large Text (above 18pt) WCAG AA ✓ Pass

Any Text WCAG AA ✓ Pass

Large Text (above 18pt) WCAG AAA ✓ Pass

Any Text WCAG AAA × Fail

Black Background



This preview shows how the HunterLab color 41.1110, 5.2357, 10.8215 looks on a black background.

Color Contrast Check

Large Text (above 18pt) WCAG AA ✓ Pass

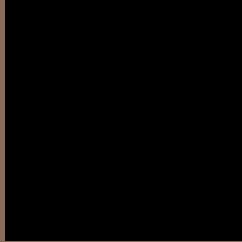
Any Text WCAG AA × Fail

Large Text (above 18pt) WCAG AAA × Fail

Any Text WCAG AAA × Fail

If you want to check with other color combinations, try the [Color Contrast Checker](#).

HunterLab 41.1110, 5.2357, 10.8215 Background



This preview shows how black text looks on a background with the HunterLab color 41.1110, 5.2357, 10.8215.



This preview shows how white text looks on a background with the HunterLab color 41.1110, 5.2357,

Color Blindness Simulation

Color vision deficiency is a very complex topic, and I could not describe the different causes any better than Wikipedia does, so if you want to learn more, you should check out their [article about color blindness](#).

Dichromacy



Original Color

41.1110, 5.2357, 10.8215

Protanopia

41.1410, -2.7156, 9.7008

Deuteranopia

41.1231, 2.6089, 10.7873



Tritanopia

41.0741, 10.0274, 2.9340

Trichromacy



Original Color

41.1110, 5.2357, 10.8215

Protanomaly

41.1200, -0.0435, 10.0681

Deuteranomaly

41.0620, 3.7463, 10.7479

Tritanomaly

41.0085, 8.1139, 6.0888

Monochromacy



Original Color

41.1110, 5.2357, 10.8215

Achromatopsia

41.4054, -2.2093, 2.2496

Achromatomaly

41.0619, 0.3746, 5.2240

CSS Examples

Text

The CSS property to change the color of the text to HunterLab 41.1110, 5.2357, 10.8215 is called "color". The color property can be set on classes, ids or directly on the HTML element.

This example shows how text in the color `rgb(138, 108, 92)` looks like.

```
.text, #text, p{  
    color:rgb(138, 108, 92)  
}
```

If you want to add a text shadow in that color use the text-shadow property, you can generate a text shadow directly with our [CSS Text Shadow Generator](#).

Here you see how black text with a 4 pixel rgb(138, 108, 92) colored shadow looks like.

```
.shadow{ text-shadow: 4px 4px 2px rgb(138, 108, 92) }
```

Border

The CSS property to change the border of an element to HunterLab 41.1110, 5.2357, 10.8215 is called "border". The border property can be set on classes, ids or directly on the HTML element.

This example shows the color as border, it can be applied via the CSS property "border" or "border-color".

```
.border, #border, table{ border:4px solid rgb(138, 108, 92) }
```


If only the border color should be changed use the property `border-color`.

```
.border{ border-color:rgb(138, 108, 92) }
```

If you want to add a box shadow in that color use:

Here you see how a box with a 4 pixel `rgb(138, 108, 92)` colored shadow looks like.

```
.boxshadow{ -moz-box-shadow:4px 4px 4px  
4px rgb(138, 108, 92); -webkit-box-  
shadow:4px 4px 4px 4px rgb(138, 108, 92);  
box-shadow:4px 4px 4px 4px rgb(138, 108,  
92) }
```

Background

The CSS property to change the background color of an element to HunterLab 41.1110, 5.2357, 10.8215 is called "background". The background property can be set on classes, ids or directly on the HTML element.

```
.background, #background, body{  
background: rgb(138, 108, 92) }
```

If only the background color should be changed can be used:

```
.background{ background-color: rgb(138,  
108, 92) }
```

This example shows the color as background, it is applied via the CSS property "background".

To optimize and compress your CSS code, you can use our [online CSS compressor and optimizer](#) based on csstidy. If you want to create a linear or radial gradient as background or border, check our [CSS Gradient Generator](#).

Hey! You found this booklet interesting? Support Converting Colors with the new Membership Option!

The pro membership hides all ads, plus gives you double the colors in the color bucket, and more awesome pro features!

[Learn more, Memberships starting at \\$2.50/m!](#)

**Follow me
on Twitter!**

@ConvertingColor