

Converting Colors

HunterLab(41.3549, 59.9410,
6.0284)

Have a look what the booklet for
HunterLab(41.3549, 59.9410,
6.0284) contains.

HunterLab(41.3863, 59.8505, 6.2250)	3
<i>Conversions</i>	4
<i>Details</i>	6
<i>Harmonies</i>	12
<i>Previews</i>	24
<i>Color Blindness Simulation</i>	28
<i>CSS Examples</i>	31

Color

**HunterLab(41.3863, 59.8505,
6.2250)**

Conversions

Conversions Part 1

Format	Color
Hex	D3316C
RGB	211, 49, 108
RGB Percent	83%, 19%, 42%
CMY	0.1725, 0.8078, 0.5765
CMYK	0.00, 0.77, 0.49, 0.17
HSL	338°, 65%, 51%
HSV	338°, 77%, 83%
XYZ	30.6691, 17.1283, 15.8770
YIQ	104.1640, 77.6130, 52.6930

Conversions

Conversions Part 2

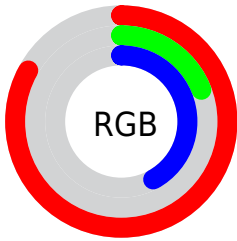
Format	Color
R_{YB}	211, 49, 108
Decimal	13840748
CIE _{Lab}	48.42, 65.26, 5.80
CIE _{LCh}	48, 65.521, 5.082
Yxy	17.1292, 0.4816, 0.2690
Android (android.graphics.Color)	4292030828 (0xFFD3316C)
YUV	104.1640, 1.8911, 93.6952
Hunter-Lab	41.3863, 59.8505, 6.2250

Details

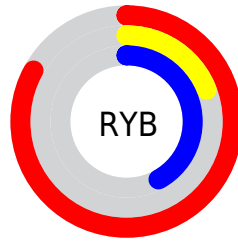
The HunterLab color **41.3863, 59.8505, 6.2250** is a dark color, and the websafe version is hex **CC3366**. The color can be described as dark muted rose. A complement of this color would be **70.3627, -46.4459, 17.5087**, and the grayscale version is **37.2432, -1.9872, 2.0235**.

A 20% lighter version of the original color is **59.0890, 56.9237, 4.4944**, and **26.1170, 46.0161, 6.8762** is the 20% darker color. If you saturate the color by 10%, you get **39.3623, 64.0935, 9.2183**, and if you desaturate by 10%, it is **44.3102, 53.5334, 3.8568**.

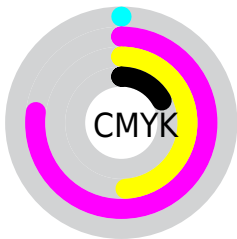
Distribution



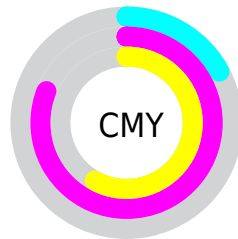
- Red (83%)
- Green (19%)
- Blue (42%)



- Red (83%)
- Yellow (19%)
- Blue (42%)



- Cyan (0%)
- Magenta (77%)
- Yellow (49%)
- Black (17%)



- Cyan (17%)
- Magenta (81%)
- Yellow (58%)

Brightness & Saturation Gradients

These gradients show how the HunterLab color 41.3863, 59.8505, 6.2250 changes by changing the brightness by 10 percent. The first figure shows a shift by +10% for each color and the second figure -10%.

Similar to the brightness gradients but the following saturation gradients show a change of the HunterLab color 41.3863, 59.8505, 6.2250 by changing the saturation by 10% instead.

41.3863, 59.8505,
6.2250

41.3863, 59.8505,
6.2250

153.5956, 76.2098,
14.7048

32.1352, 57.6227,
5.3655

62.0869, 64.1322,
7.9855

23.6983, 55.4513,
4.5110

73.4389, 66.1414,
8.8894

16.1650, 53.5794,
3.6518

85.4091, 68.0523,
9.8113

9.6604, 52.7717,
3.0217

97.9670, 69.8656,
10.7518

0.0000, INF, NaN

0.0000, INF, NaN

111.0865, 71.5841,
11.7113

0.0000, NaN, NaN

124.7443, 73.2115,

0.0000, NaN, NaN

12.6899

0.0000, NaN, NaN

138.9201, 74.7520,
13.6877

■ 41.3863, 59.8505,
6.2250

■ 41.3863, 59.8505,
6.2250

■ 39.3623, 64.0935,
9.2183

■ 44.3102, 53.5334,
3.8568

■ 38.2012, 65.9876,
12.5614

■ 48.0749, 45.7653,
2.2317

■ 37.9241, 66.3529,
13.6008

■ 52.5854, 37.1615,
1.3475

■ 57.7354, 28.1954,
1.1268

■ 63.4255, 19.1686,
1.4654

■ 69.5702, 10.2457,
2.2609

■ 76.0993, 1.5012,
3.4248

■ 82.9564, -7.0432,
4.8854

■ 90.0964, -15.3930,
6.5867

Harmonies

Analogous

The Analogous color harmony consists of three colors that are next to each other on the color wheel.



41.3875, 53.2016, -23.0298



41.3863, 59.8505, 6.2250



41.3875, 46.8239, 21.2561

Triad

The Triadic color harmony groups three colors that are evenly spaced from another and form a triangle on the color wheel.



41.3875, 59.8466, 6.2261



41.3875, -27.0791, 25.2732



41.3875, -21.1394, -67.6599

Complementary

The Complementary color scheme is a pair of colors which are on the opposite of each other on the color wheel.



41.3863, 59.8505, 6.2250



70.3627, -46.4459, 17.5087

Split Complementary

Split-complementary colors differ from the complementary color scheme. The scheme consists of three colors, the original color and two neighbors of the complement color.



41.3875, -35.5371, -35.1776



41.3863, 59.8505, 6.2250



41.3875, -38.3302, 17.6332

Square

The Square scheme is like the rectangle color scheme, but the four colors are evenly spaced on the color wheel.



41.3875, 59.8466, 6.2261



41.3875, -6.5220, 27.0969



41.3875, -40.9954, -2.1581



41.3875, 2.2849, -77.9368

Rectangle

The Rectangle color scheme consists of four colors that form a rectangle on the color wheel.



41.3863, 59.8505, 6.2250



41.3875, 30.2564, 25.2939



41.3875, -40.9954, -2.1581



41.3875, -26.9921, -58.2943

Sweetspot

The Sweet Spot groups the original color and five complimentary colors.



41.3875, 59.8466, 6.2261



81.2063, 19.8358, 2.1042



36.7941, 60.4426, -75.5766



36.3126, 11.0552, 0.8357

0.0000, NaN, NaN



46.2646, -2.4686, 2.5136

Same Dimension

The Same Dimension uses a secret algorithm to generate beautiful new colors.



41.3875, 59.8466, 6.2261



47.7615, 81.1956, 13.9823



43.0440, 47.6174, 23.3528



34.4650, 1.7539, 1.4311



29.4921, 51.6590, 10.1200



7.0810, 12.6077, 0.8443

Inverse Universe

The Inverse Universe completely reimagines the original color for something new.



41.3875, 59.8466, 6.2261



47.7615, 81.1956, 13.9823



64.7492, -26.9983, -17.0064



34.4650, 1.7539, 1.4311



29.4921, 51.6590, 10.1200



7.0810, 12.6077, 0.8443

Previews

White Background



This preview shows how the HunterLab color 41.3863, 59.8505, 6.2250 looks on a white background.

Color Contrast Check

Large Text (above 18pt) WCAG AA ✓ Pass

Any Text WCAG AA ✓ Pass

Large Text (above 18pt) WCAG AAA ✓ Pass

Any Text WCAG AAA × Fail

Black Background



This preview shows how the HunterLab color 41.3863, 59.8505, 6.2250 looks on a black background.

Color Contrast Check

Large Text (above 18pt) WCAG AA ✓ Pass

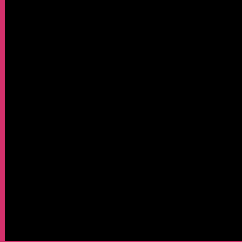
Any Text WCAG AA × Fail

Large Text (above 18pt) WCAG AAA × Fail

Any Text WCAG AAA × Fail

If you want to check with other color combinations, try the [Color Contrast Checker](#).

HunterLab 41.3863, 59.8505, 6.2250 Background



This preview shows how black text looks on a background with the HunterLab color 41.3863, 59.8505, 6.2250.



This preview shows how white text looks on a background with the HunterLab color 41.3863, 59.8505,

Color Blindness Simulation

Color vision deficiency is a very complex topic, and I could not describe the different causes any better than Wikipedia does, so if you want to learn more, you should check out their [article about color blindness](#).

Dichromacy



Original Color

41.3863, 59.8505, 6.2250

Protanopia

41.9011, 1.4292, -12.0608

Deuteranopia

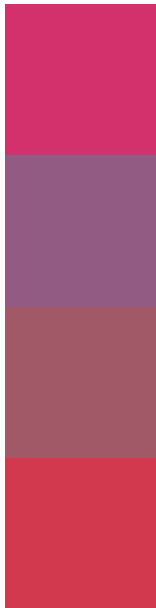
41.4663, 2.7681, 8.3608



Tritanopia

41.5351, 51.3432, 19.7798

Trichromacy



Original Color

41.3863, 59.8505, 6.2250

Protanomaly

39.0629, 21.9343, -8.6791

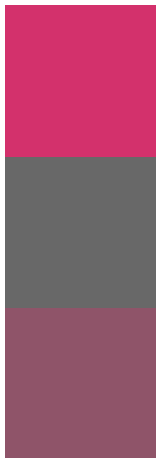
Deuteranomaly

39.4155, 24.4761, 5.4139

Tritanomaly

41.4637, 54.2316, 15.9218

Monochromacy



Original Color

41.3863, 59.8505, 6.2250

Achromatopsia

37.2064, -1.9852, 2.0215

Achromatomaly

36.3321, 20.1750, 0.9313

CSS Examples

Text

The CSS property to change the color of the text to HunterLab 41.3863, 59.8505, 6.2250 is called "color". The color property can be set on classes, ids or directly on the HTML element.

This example shows how text in the color `rgb(211, 49, 108)` looks like.

```
.text, #text, p{  
    color:rgb(211, 49, 108)  
}
```

If you want to add a text shadow in that color use the text-shadow property, you can generate a text shadow directly with our [CSS Text Shadow Generator](#).

Here you see how black text with a 4 pixel rgb(211, 49, 108) colored shadow looks like.

```
.shadow{ text-shadow: 4px 4px 2px rgb(211, 49, 108) }
```

Border

The CSS property to change the border of an element to HunterLab 41.3863, 59.8505, 6.2250 is called "border". The border property can be set on classes, ids or directly on the HTML element.

This example shows the color as border, it can be applied via the CSS property "border" or "border-color".

```
.border, #border, table{ border:4px solid rgb(211, 49, 108) }
```


If only the border color should be changed use the property `border-color`.

```
.border{ border-color:rgb(211, 49, 108) }
```

If you want to add a box shadow in that color use:

Here you see how a box with a 4 pixel `rgb(211, 49, 108)` colored shadow looks like.

```
.boxshadow{ -moz-box-shadow:4px 4px 4px  
4px rgb(211, 49, 108); -webkit-box-  
shadow:4px 4px 4px 4px rgb(211, 49, 108);  
box-shadow:4px 4px 4px 4px rgb(211, 49,  
108) }
```

Background

The CSS property to change the background color of an element to HunterLab 41.3863, 59.8505, 6.2250 is called "background". The background property can be set on classes, ids or directly on the HTML element.

```
.background, #background, body{  
background: rgb(211, 49, 108) }
```

If only the background color should be changed can be used:

```
.background{ background-color: rgb(211, 49,  
108) }
```

This example shows the color as background, it is applied via the CSS property "background".

To optimize and compress your CSS code, you can use our [online CSS compressor and optimizer](#) based on csstidy. If you want to create a linear or radial gradient as background or border, check our [CSS Gradient Generator](#).

Hey! You found this booklet interesting? Support Converting Colors with the new Membership Option!

The pro membership hides all ads, plus gives you double the colors in the color bucket, and more awesome pro features!

[Learn more, Memberships starting at \\$2.50/m!](#)

**Follow me
on Twitter!**

@ConvertingColor