

Converting Colors

HunterLab(41.4033, 1.0147,
7.5294)

Have a look what the booklet for
HunterLab(41.4033, 1.0147, 7.5294)
contains.

HunterLab(41.3967, 1.2664, 7.5268)	3
<i>Conversions</i>	4
<i>Details</i>	6
<i>Harmonies</i>	12
<i>Previews</i>	24
<i>Color Blindness Simulation</i>	28
<i>CSS Examples</i>	31

Color

**HunterLab(41.3967, 1.2664,
7.5268)**

Conversions

Conversions Part 1

Format	Color
Hex	807066
RGB	128, 112, 102
RGB Percent	50%, 44%, 40%
CMY	0.4980, 0.5608, 0.6000
CMYK	0.00, 0.12, 0.20, 0.50
HSL	23°, 11%, 45%
HSV	23°, 20%, 50%
XYZ	17.0945, 17.1369, 14.9772
YIQ	115.6440, 12.7460, 0.2820

Conversions

Conversions Part 2

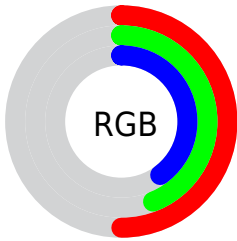
Format	Color
R_YB	128, 118, 102
Decimal	8417382
CIE Lab	48.43, 4.51, 7.85
CIE LCh	48, 9.052, 60.128
Yxy	17.1376, 0.3474, 0.3483
Android (android.graphics.Color)	4286607462 (0xFF807066)
YUV	115.6440, -6.7265, 10.8362
Hunter-Lab	41.3967, 1.2664, 7.5268

Details

The HunterLab color $[41.3967, 1.2664, 7.5268]$ is a dark color, and the websafe version is hex 666666 . A complement of this color would be $[41.6410, -4.9110, -3.5048]$, and the grayscale version is $[41.6760, -2.2237, 2.2643]$.

A 20% lighter version of the original color is $[62.1889, 0.4737, 9.5966]$, and $[23.5846, 1.6015, 5.4743]$ is the 20% darker color. If you saturate the color by 10%, you get $[39.0387, 3.3632, 9.6931]$, and if you desaturate by 10%, it is $[43.8478, -0.6602, 5.1565]$.

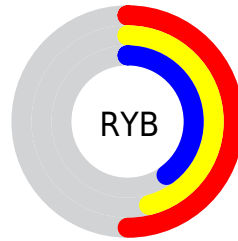
Distribution



Red (50%)

Green (44%)

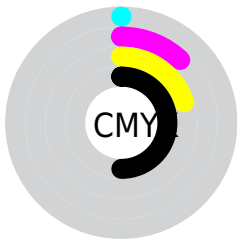
Blue (40%)



Red (50%)

Yellow (46%)

Blue (40%)

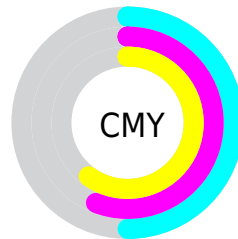


Cyan (0%)

Magenta (12%)

Yellow (20%)

Black (50%)



Cyan (50%)

Magenta (56%)

Yellow (60%)

Brightness & Saturation Gradients

These gradients show how the HunterLab color 41.3967, 1.2664, 7.5268 changes by changing the brightness by 10 percent. The first figure shows a shift by +10% for each color and the second figure -10%.

Similar to the brightness gradients but the following saturation gradients show a change of the HunterLab color 41.3967, 1.2664, 7.5268 by changing the saturation by 10% instead.

■ 41.3967, 1.2664,
7.5268

■ 41.3967, 1.2664,
7.5268

■ 153.6113, -2.8733,
16.8756

■ 32.1445, 1.4877,
6.5331

■ 62.0985, 0.6473,
9.5215

■ 23.7067, 1.6415,
5.5291

■ 73.4512, 0.2637,
10.5308

■ 16.1724, 1.7133,
4.4981

■ 85.4220, -0.1642,
11.5519

■ 9.6667, 1.6814,
3.8978

■ 97.9806, -0.6332,
12.5864

0.0000, NaN, NaN

0.0000, NaN, NaN

■ 111.1006, -1.1407,
13.6353

0.0000, NaN, NaN

■ 124.7590, -1.6845,

0.0000, NaN, NaN

14.6995

0.0000, NaN, NaN

138.9353, -2.2625,
15.7795

■ 41.3967, 1.2664,
7.5268

■ 41.3967, 1.2664,
7.5268

■ 39.0387, 3.3632,
9.6931

■ 43.8478, -0.6602,
5.1565

■ 36.7810, 5.6459,
11.6231

■ 46.3807, -2.4264,
2.6065

■ 34.6356, 8.1216,
13.2829

■ 48.9887, -4.0472,
-0.1005

■ 32.6151, 10.7922,
14.6344

■ 51.6652, -5.5363,
-2.9457

■ 30.7329, 13.6493,
15.6387

■ 54.4047, -6.9065,
-5.9135

■ 29.0037, 16.6691,
16.2604

■ 57.2020, -8.1694,
-8.9908

■ 27.4419, 19.8066,
16.4767

■ 60.0529, -9.3358,
-12.1664

■ 26.0889, 22.8375,
16.4757

■ 62.9535, -10.4153,
-15.4310

■ 65.9005, -11.4163,
-18.7767

Harmonies

Analogous

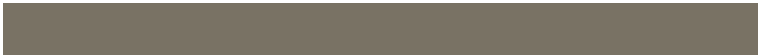
The Analogous color harmony consists of three colors that are next to each other on the color wheel.



41.3976, 3.8976, 5.4002



41.3967, 1.2664, 7.5268



41.3976, -2.2265, 8.2683

Triad

The Triadic color harmony groups three colors that are evenly spaced from another and form a triangle on the color wheel.



41.3976, 1.2651, 7.5274



41.3976, -8.8571, 2.2387



41.3976, 1.2926, -3.8044

Complementary

The Complementary color scheme is a pair of colors which are on the opposite of each other on the color wheel.



41.3967, 1.2664, 7.5268



41.6410, -4.9110, -3.5048

Split Complementary

Split-complementary colors differ from the complementary color scheme. The scheme consists of three colors, the original color and two neighbors of the complement color.



41.3976, -2.1957, -4.8261



41.3967, 1.2664, 7.5268



41.3976, -7.9849, -1.1616

Square

The Square scheme is like the rectangle color scheme, but the four colors are evenly spaced on the color wheel.



41.3976, 1.2651, 7.5274



41.3976, -7.9994, 5.3768



41.3976, -5.5762, -3.8212



41.3976, 3.9138, -1.1341

Rectangle

The Rectangle color scheme consists of four colors that form a rectangle on the color wheel.



41.3967, 1.2664, 7.5268



41.3976, -4.5479, 7.9299



41.3976, -5.5762, -3.8212



41.3976, 0.1788, -4.3616

Sweetspot

The Sweet Spot groups the original color and five complimentary colors.



41.3976, 1.2651, 7.5274



59.5714, -1.8788, 5.4569



39.2441, 8.3084, -1.5829



28.7405, -0.8497, 2.7249



80.9895, -4.3214, 4.4003



29.8298, -1.5916, 1.6207

Same Dimension

The Same Dimension uses a secret algorithm to generate beautiful new colors.



41.3976, 1.2651, 7.5274



53.5875, 2.8301, 11.2420



44.9527, -4.6908, 11.0376



21.4347, -0.4289, 2.3571



25.9835, 22.7283, 16.4088

0.0000, NaN, NaN

Inverse Universe

The Inverse Universe completely reimagines the original color for something new.



41.6410, -4.9110, -3.5048



53.9747, -7.0243, -6.3612



38.0703, 1.0393, -8.3282



21.4885, -1.7881, -0.0707

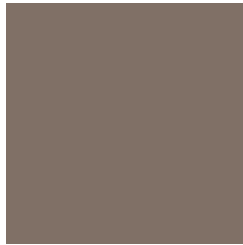


26.5671, -2.0151, -28.8566

0.0000, NaN, NaN

Previews

White Background



This preview shows how the HunterLab color 41.3967, 1.2664, 7.5268 looks on a white background.

Color Contrast Check

Large Text (above 18pt) WCAG AA ✓ Pass

Any Text WCAG AA ✓ Pass

Large Text (above 18pt) WCAG AAA ✓ Pass

Any Text WCAG AAA × Fail

Black Background



This preview shows how the HunterLab color 41.3967, 1.2664, 7.5268 looks on a black background.

Color Contrast Check

Large Text (above 18pt) WCAG AA ✓ Pass

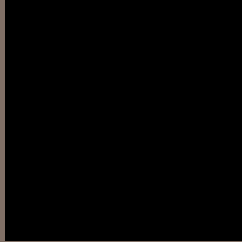
Any Text WCAG AA × Fail

Large Text (above 18pt) WCAG AAA × Fail

Any Text WCAG AAA × Fail

If you want to check with other color combinations, try the [Color Contrast Checker](#).

HunterLab 41.3967, 1.2664, 7.5268 Background



This preview shows how black text looks on a background with the HunterLab color 41.3967, 1.2664, 7.5268.



This preview shows how white text looks on a background with the HunterLab color 41.3967, 1.2664,

Color Blindness Simulation

Color vision deficiency is a very complex topic, and I could not describe the different causes any better than Wikipedia does, so if you want to learn more, you should check out their [article about color blindness](#).

Dichromacy



Original Color

41.3967, 1.2664, 7.5268

Protanopia

41.5136, -2.4562, 7.2108

Deuteranopia

41.4168, 2.6964, 7.5730



Tritanopia

41.4797, 5.0931, 1.1500

Trichromacy



Original Color

41.3967, 1.2664, 7.5268

Protanomaly

41.5028, -1.0892, 7.2233

Deuteranomaly

41.3207, 2.3734, 7.4663

Tritanomaly

41.4799, 3.4161, 3.7085

Monochromacy



Original Color

41.3967, 1.2664, 7.5268

Achromatopsia

41.7908, -2.2299, 2.2706

Achromatomaly

41.7160, -1.3492, 4.3071

CSS Examples

Text

The CSS property to change the color of the text to HunterLab 41.3967, 1.2664, 7.5268 is called "color". The color property can be set on classes, ids or directly on the HTML element.

This example shows how text in the color `rgb(128, 112, 102)` looks like.

```
.text, #text, p{  
    color:rgb(128, 112, 102)  
}
```

If you want to add a text shadow in that color use the text-shadow property, you can generate a text shadow directly with our [CSS Text Shadow Generator](#).

Here you see how black text with a 4 pixel rgb(128, 112, 102) colored shadow looks like.

```
.shadow{ text-shadow: 4px 4px 2px rgb(128, 112, 102) }
```

Border

The CSS property to change the border of an element to HunterLab 41.3967, 1.2664, 7.5268 is called "border". The border property can be set on classes, ids or directly on the HTML element.

This example shows the color as border, it can be applied via the CSS property "border" or "border-color".

```
.border, #border, table{ border:4px solid rgb(128, 112, 102) }
```


If only the border color should be changed use the property `border-color`.

```
.border{ border-color:rgb(128, 112, 102) }
```

If you want to add a box shadow in that color use:

Here you see how a box with a 4 pixel `rgb(128, 112, 102)` colored shadow looks like.

```
.boxshadow{ -moz-box-shadow:4px 4px 4px  
4px rgb(128, 112, 102); -webkit-box-  
shadow:4px 4px 4px 4px rgb(128, 112, 102);  
box-shadow:4px 4px 4px 4px rgb(128, 112,  
102) }
```

Background

The CSS property to change the background color of an element to HunterLab 41.3967, 1.2664, 7.5268 is called "background". The background property can be set on classes, ids or directly on the HTML element.

```
.background, #background, body{  
background: rgb(128, 112, 102) }
```

If only the background color should be changed can be used:

```
.background{ background-color: rgb(128,  
112, 102) }
```

This example shows the color as background, it is applied via the CSS property "background".

To optimize and compress your CSS code, you can use our [online CSS compressor and optimizer](#) based on csstidy. If you want to create a linear or radial gradient as background or border, check our [CSS Gradient Generator](#).

Hey! You found this booklet interesting? Support Converting Colors with the new Membership Option!

The pro membership hides all ads, plus gives you double the colors in the color bucket, and more awesome pro features!

[Learn more, Memberships starting at \\$2.50/m!](#)

**Follow me
on Twitter!**

@ConvertingColor