

Converting Colors

HunterLab(41.5058, 50.7839,
8.7473)

Have a look what the booklet for
HunterLab(41.5058, 50.7839,
8.7473) contains.

HunterLab(41.5967, 50.8394, 8.9729)	3
<i>Conversions</i>	4
<i>Details</i>	6
<i>Harmonies</i>	12
<i>Previews</i>	24
<i>Color Blindness Simulation</i>	28
<i>CSS Examples</i>	31

Color

**HunterLab(41.5967, 50.8394,
8.9729)**

Conversions

Conversions Part 1

Format	Color
Hex	CB4065
RGB	203, 64, 101
RGB Percent	80%, 25%, 40%
CMY	0.2039, 0.7490, 0.6039
CMYK	0.00, 0.68, 0.50, 0.20
HSL	344°, 57%, 52%
HSV	344°, 68%, 80%
XYZ	28.8109, 17.3029, 14.1332
YIQ	109.7790, 70.9670, 40.9750

Conversions

Conversions Part 2

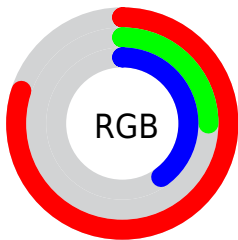
Format	Color
R_{YB}	203, 64, 101
Decimal	13320293
CIE Lab	48.64, 57.25, 10.18
CIE LCh	49, 58.151, 10.086
Yxy	17.3038, 0.4782, 0.2872
Android (android.graphics.Color)	4291510373 (0xFFCB4065)
YUV	109.7790, -4.3280, 81.7548
Hunter-Lab	41.5967, 50.8394, 8.9729

Details

The HunterLab color **41.5967, 50.8394, 8.9729** is a dark color, and the websafe version is hex **CC3366**. The color can be described as dark muted rose. A complement of this color would be **68.2315, -39.9953, 9.9918**, and the grayscale version is **39.4016, -2.1024, 2.1408**.

A 20% lighter version of the original color is **60.7947, 51.0553, 9.3847**, and **24.7295, 43.4654, 7.3334** is the 20% darker color. If you saturate the color by 10%, you get **38.9227, 56.6353, 11.5312**, and if you desaturate by 10%, it is **45.1040, 43.6296, 6.8779**.

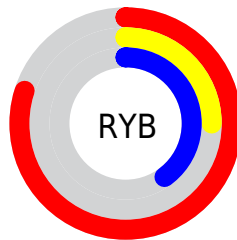
Distribution



Red (80%)

Green (25%)

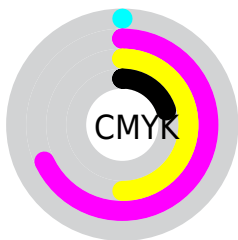
Blue (40%)



Red (80%)

Yellow (25%)

Blue (40%)

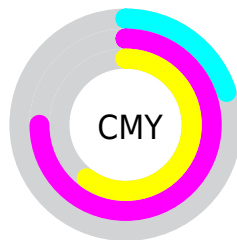


Cyan (0%)

Magenta (68%)

Yellow (50%)

Black (20%)



Cyan (20%)

Magenta (75%)

Yellow (60%)

Brightness & Saturation Gradients

These gradients show how the HunterLab color 41.5967, 50.8394, 8.9729 changes by changing the brightness by 10 percent. The first figure shows a shift by +10% for each color and the second figure -10%.

Similar to the brightness gradients but the following saturation gradients show a change of the HunterLab color 41.5967, 50.8394, 8.9729 by changing the saturation by 10% instead.

41.5967, 50.8394,
8.9729

41.5967, 50.8394,
8.9729

153.9211, 65.0148,
19.3355

32.3285, 48.7836,
7.8229

62.3277, 54.6752,
11.2425

23.8731, 46.7034,
6.6435

73.6935, 56.4396,
12.3747

16.3189, 44.7493,
5.4108

85.6768, 58.1007,
13.5114

9.7902, 43.4189,
4.8575

98.2473, 59.6624,
14.6554

0.0000, INF, NaN

0.0000, INF, NaN

111.3787, 61.1296,
15.8085

0.0000, NaN, NaN

125.0481, 62.5075,

0.0000, NaN, NaN

16.9722

0.0000, NaN, NaN

139.2350, 63.8010,
18.1476

■ 41.5967, 50.8394,
8.9729

■ 41.5967, 50.8394,
8.9729

■ 38.9227, 56.6353,
11.5312

■ 45.1040, 43.6296,
6.8779

■ 37.1257, 60.4561,
14.3595

■ 49.3490, 35.6192,
5.3214

■ 36.1282, 62.1893,
17.1456

■ 54.2276, 27.2723,
4.2965

■ 36.0042, 62.3988,
17.5253

■ 59.6404, 18.8864,
3.7491

■ 65.5018, 10.6218,
3.6094

71.7413, 2.5489,
3.8090

78.3024, -5.3141,
4.2881

85.1401, -12.9756,
4.9974

92.2184, -20.4563,
5.8971

Harmonies

Analogous

The Analogous color harmony consists of three colors that are next to each other on the color wheel.



41.5979, 48.0105, -14.7482



41.5967, 50.8394, 8.9729



41.5979, 37.2713, 21.2565

Triad

The Triadic color harmony groups three colors that are evenly spaced from another and form a triangle on the color wheel.



41.5979, 50.8358, 8.9739



41.5979, -27.0238, 23.2946



41.5979, -16.2279, -59.8166

Complementary

The Complementary color scheme is a pair of colors which are on the opposite of each other on the color wheel.



41.5967, 50.8394, 8.9729



68.2315, -39.9953, 9.9918

Split Complementary

Split-complementary colors differ from the complementary color scheme. The scheme consists of three colors, the original color and two neighbors of the complement color.



41.5979, -30.9183, -34.9174



41.5967, 50.8394, 8.9729



41.5979, -36.1488, 14.1879

Square

The Square scheme is like the rectangle color scheme, but the four colors are evenly spaced on the color wheel.



41.5979, 50.8358, 8.9739



41.5979, -9.6813, 26.0303



41.5979, -37.4000, -5.7907



41.5979, 5.8035, -64.0221

Rectangle

The Rectangle color scheme consists of four colors that form a rectangle on the color wheel.



41.5967, 50.8394, 8.9729



41.5979, 22.1879, 24.7055



41.5979, -37.4000, -5.7907



41.5979, -22.0443, -53.1335

Sweetspot

The Sweet Spot groups the original color and five complimentary colors.



41.5979, 50.8358, 8.9739



82.5747, 16.7292, 4.6735



40.0993, 55.9164, -57.8513



37.2151, 9.1223, 2.1802

0.0000, NaN, NaN



46.2646, -2.4686, 2.5136

Same Dimension

The Same Dimension uses a secret algorithm to generate beautiful new colors.



41.5979, 50.8358, 8.9739



49.1494, 75.9268, 16.5914



46.3821, 33.4284, 22.9636



33.5587, 1.5522, 1.7819



28.7449, 49.8621, 13.6473



6.6268, 11.6853, 1.6725

Inverse Universe

The Inverse Universe completely reimagines the original color for something new.



41.5979, 50.8358, 8.9739



49.1494, 75.9268, 16.5914



58.6217, -19.2300, -21.3580



33.5587, 1.5522, 1.7819



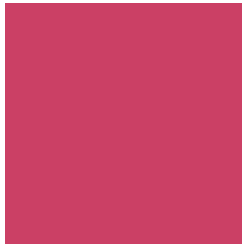
28.7449, 49.8621, 13.6473



6.6268, 11.6853, 1.6725

Previews

White Background



This preview shows how the HunterLab color 41.5967, 50.8394, 8.9729 looks on a white background.

Color Contrast Check

Large Text (above 18pt) WCAG AA ✓ Pass

Any Text WCAG AA ✓ Pass

Large Text (above 18pt) WCAG AAA ✓ Pass

Any Text WCAG AAA × Fail

Black Background



This preview shows how the HunterLab color 41.5967, 50.8394, 8.9729 looks on a black background.

Color Contrast Check

Large Text (above 18pt) WCAG AA ✓ Pass

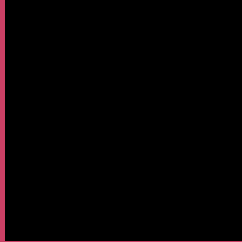
Any Text WCAG AA × Fail

Large Text (above 18pt) WCAG AAA × Fail

Any Text WCAG AAA × Fail

If you want to check with other color combinations, try the [Color Contrast Checker](#).

HunterLab 41.5967, 50.8394, 8.9729 Background



This preview shows how black text looks on a background with the HunterLab color 41.5967, 50.8394, 8.9729.



This preview shows how white text looks on a background with the HunterLab color 41.5967, 50.8394,

Color Blindness Simulation

Color vision deficiency is a very complex topic, and I could not describe the different causes any better than Wikipedia does, so if you want to learn more, you should check out their [article about color blindness](#).

Dichromacy



Original Color

41.5967, 50.8394, 8.9729

Protanopia

41.7909, -0.1073, -3.2239

Deuteranopia

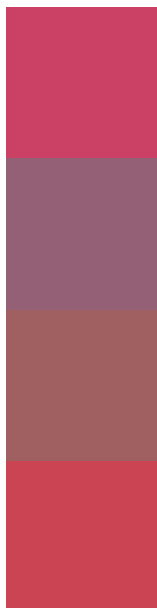
41.8896, 2.5691, 10.8687



Tritanopia

41.5839, 45.3308, 17.1803

Trichromacy



Original Color

41.5967, 50.8394, 8.9729

Protanomaly

39.8457, 17.5609, -0.6433

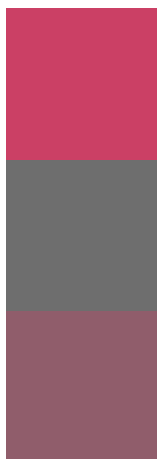
Deuteranomaly

40.6461, 19.9814, 8.8991

Tritanomaly

41.6304, 47.3083, 14.5352

Monochromacy



Original Color

41.5967, 50.8394, 8.9729

Achromatopsia

39.4875, -2.1070, 2.1454

Achromatomaly

38.4961, 16.4183, 2.5852

CSS Examples

Text

The CSS property to change the color of the text to HunterLab 41.5967, 50.8394, 8.9729 is called "color". The color property can be set on classes, ids or directly on the HTML element.

This example shows how text in the color `rgb(203, 64, 101)` looks like.

```
.text, #text, p{  
    color:rgb(203, 64, 101)  
}
```

If you want to add a text shadow in that color use the text-shadow property, you can generate a text shadow directly with our [CSS Text Shadow Generator](#).

Here you see how black text with a 4 pixel rgb(203, 64, 101) colored shadow looks like.

```
.shadow{ text-shadow: 4px 4px 2px rgb(203, 64, 101) }
```

Border

The CSS property to change the border of an element to HunterLab 41.5967, 50.8394, 8.9729 is called "border". The border property can be set on classes, ids or directly on the HTML element.

This example shows the color as border, it can be applied via the CSS property "border" or "border-color".

```
.border, #border, table{ border:4px solid rgb(203, 64, 101) }
```


If only the border color should be changed use the property `border-color`.

```
.border{ border-color:rgb(203, 64, 101) }
```

If you want to add a box shadow in that color use:

Here you see how a box with a 4 pixel `rgb(203, 64, 101)` colored shadow looks like.

```
.boxshadow{ -moz-box-shadow:4px 4px 4px  
4px rgb(203, 64, 101); -webkit-box-  
shadow:4px 4px 4px 4px rgb(203, 64, 101);  
box-shadow:4px 4px 4px 4px rgb(203, 64,  
101) }
```

Background

The CSS property to change the background color of an element to HunterLab 41.5967, 50.8394, 8.9729 is called "background". The background property can be set on classes, ids or directly on the HTML element.

```
.background, #background, body{  
background: rgb(203, 64, 101) }
```

If only the background color should be changed can be used:

```
.background{ background-color: rgb(203, 64,  
101) }
```

This example shows the color as background, it is applied via the CSS property "background".

To optimize and compress your CSS code, you can use our [online CSS compressor and optimizer](#) based on csstidy. If you want to create a linear or radial gradient as background or border, check our [CSS Gradient Generator](#).

Hey! You found this booklet interesting? Support Converting Colors with the new Membership Option!

The pro membership hides all ads, plus gives you double the colors in the color bucket, and more awesome pro features!

[Learn more, Memberships starting at \\$2.50/m!](#)

**Follow me
on Twitter!**

@ConvertingColor