

Converting Colors

HunterLab(41.5813, 60.7932,
9.4917)

Have a look what the booklet for
HunterLab(41.5813, 60.7932,
9.4917) contains.

HunterLab(41.5322, 60.7601, 9.4441)	3
<i>Conversions</i>	4
<i>Details</i>	6
<i>Harmonies</i>	12
<i>Previews</i>	24
<i>Color Blindness Simulation</i>	28
<i>CSS Examples</i>	31

Color

**HunterLab(41.5322, 60.7601,
9.4441)**

Conversions

Conversions Part 1

Format	Color
Hex	D62F64
RGB	214, 47, 100
RGB Percent	84%, 18%, 39%
CMY	0.1608, 0.8156, 0.6078
CMYK	0.00, 0.78, 0.53, 0.16
HSL	341°, 67%, 51%
HSV	341°, 78%, 84%
XYZ	31.0483, 17.2492, 13.7496
YIQ	102.9750, 82.5190, 51.8870

Conversions

Conversions Part 2

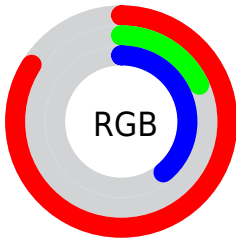
Format	Color
R_{YB}	214, 47, 100
Decimal	14036836
CIE Lab	48.57, 66.02, 10.99
CIE LCh	49, 66.928, 9.454
Yxy	17.2502, 0.5004, 0.2780
Android (android.graphics.Color)	4292226916 (0xFFD62F64)
YUV	102.9750, -1.4667, 97.3689
Hunter-Lab	41.5322, 60.7601, 9.4441

Details

The HunterLab color **41.5322, 60.7601, 9.4441** is a dark color, and the websafe version is hex **CC3366**. The color can be described as dark washed rose. A complement of this color would be **71.6039, -46.3986, 15.3854**, and the grayscale version is **36.8048, -1.9638, 1.9997**.

A 20% lighter version of the original color is **58.6785, 56.3927, 7.5614**, and **26.5304, 46.4381, 9.3614** is the 20% darker color. If you saturate the color by 10%, you get **39.5979, 64.8002, 12.5439**, and if you desaturate by 10%, it is **44.3951, 54.5726, 6.8069**.

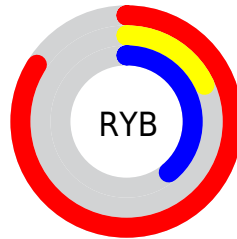
Distribution



Red (84%)

Green (18%)

Blue (39%)



Red (84%)

Yellow (18%)

Blue (39%)

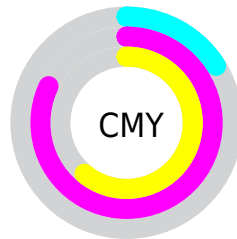


Cyan (0%)

Magenta (78%)

Yellow (53%)

Black (16%)



Cyan (16%)

Magenta (82%)

Yellow (61%)

Brightness & Saturation Gradients

These gradients show how the HunterLab color 41.5322, 60.7601, 9.4441 changes by changing the brightness by 10 percent. The first figure shows a shift by +10% for each color and the second figure -10%.

Similar to the brightness gradients but the following saturation gradients show a change of the HunterLab color 41.5322, 60.7601, 9.4441 by changing the saturation by 10% instead.

41.5322, 60.7601,
9.4441

41.5322, 60.7601,
9.4441

153.8214, 77.3020,
20.1620

32.2693, 58.5189,
8.2386

62.2539, 65.0773,
11.8106

23.8195, 56.3406,
6.9967

73.6155, 67.1066,
12.9860

16.2717, 54.4737,
5.6917

85.5948, 69.0384,
14.1632

9.7504, 53.6951,
5.2146

98.1615, 70.8728,
15.3454

0.0000, INF, NaN

0.0000, INF, NaN

111.2892, 72.6126,
16.5349

0.0000, NaN, NaN

124.9550, 74.2614,

0.0000, NaN, NaN

17.7334

0.0000, NaN, NaN

139.1385, 75.8231,
18.9421

■ 41.5322, 60.7601,
9.4441

■ 41.5322, 60.7601,
9.4441

■ 39.5979, 64.8002,
12.5439

■ 44.3951, 54.5726,
6.8069

■ 38.5223, 66.5341,
15.7835

■ 48.1328, 46.8584,
4.8023

■ 38.3566, 66.7719,
16.3740

■ 52.6496, 38.2557,
3.4761

■ 57.8351, 29.2655,
2.7856

■ 63.5849, 20.2091,
2.6474

■ 69.8090, 11.2624,
2.9697

■ 76.4332, 2.5046,
3.6689

■ 83.3981, -6.0411,
4.6747

■ 90.6561, -14.3811,
5.9308

Harmonies

Analogous

The Analogous color harmony consists of three colors that are next to each other on the color wheel.



41.5334, 56.9016, -18.5414



41.5322, 60.7601, 9.4441



41.5334, 44.7682, 22.7450

Triad

The Triadic color harmony groups three colors that are evenly spaced from another and form a triangle on the color wheel.



41.5334, 60.7560, 9.4451



41.5334, -29.8356, 24.9482



41.5334, -18.5947, -73.2883

Complementary

The Complementary color scheme is a pair of colors which are on the opposite of each other on the color wheel.



41.5322, 60.7601, 9.4441



71.6039, -46.3986, 15.3854

Split Complementary

Split-complementary colors differ from the complementary color scheme. The scheme consists of three colors, the original color and two neighbors of the complement color.



41.5334, -34.6308, -41.6996



41.5322, 60.7601, 9.4441



41.5334, -39.9037, 15.9025

Square

The Square scheme is like the rectangle color scheme, but the four colors are evenly spaced on the color wheel.



41.5334, 60.7560, 9.4451



41.5334, -10.2426, 27.2654



41.5334, -41.4067, -6.4922



41.5334, 6.4655, -79.3112

Rectangle

The Rectangle color scheme consists of four colors that form a rectangle on the color wheel.



41.5322, 60.7601, 9.4441



41.5334, 26.9011, 26.0657



41.5334, -41.4067, -6.4922



41.5334, -25.0237, -64.6641

Sweetspot

The Sweet Spot groups the original color and five complimentary colors.



41.5334, 60.7560, 9.4451



81.1186, 19.3811, 3.3537



37.6729, 63.5265, -75.7968



36.2658, 10.8154, 1.5023

0.0000, NaN, NaN



46.2646, -2.4686, 2.5136

Same Dimension

The Same Dimension uses a secret algorithm to generate beautiful new colors.



41.5334, 60.7560, 9.4451



47.2988, 80.7079, 18.0490



44.1729, 46.9575, 24.4297



35.3343, 1.7363, 1.6625



29.8487, 52.0158, 12.3185



7.4313, 13.1440, 1.5634

Inverse Universe

The Inverse Universe completely reimagines the original color for something new.



41.5334, 60.7560, 9.4451



47.2988, 80.7079, 18.0490



63.7562, -25.0481, -20.3138



35.3343, 1.7363, 1.6625



29.8487, 52.0158, 12.3185



7.4313, 13.1440, 1.5634

Previews

White Background



This preview shows how the HunterLab color 41.5322, 60.7601, 9.4441 looks on a white background.

Color Contrast Check

Large Text (above 18pt) WCAG AA ✓ Pass

Any Text WCAG AA ✓ Pass

Large Text (above 18pt) WCAG AAA ✓ Pass

Any Text WCAG AAA × Fail

Black Background



This preview shows how the HunterLab color 41.5322, 60.7601, 9.4441 looks on a black background.

Color Contrast Check

Large Text (above 18pt) WCAG AA ✓ Pass

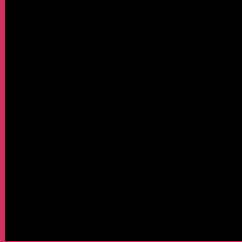
Any Text WCAG AA × Fail

Large Text (above 18pt) WCAG AAA × Fail

Any Text WCAG AAA × Fail

If you want to check with other color combinations, try the [Color Contrast Checker](#).

HunterLab 41.5322, 60.7601, 9.4441 Background



This preview shows how black text looks on a background with the HunterLab color 41.5322, 60.7601, 9.4441.

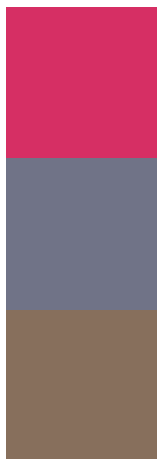


This preview shows how white text looks on a background with the HunterLab color 41.5322, 60.7601, 9.4441.

Color Blindness Simulation

Color vision deficiency is a very complex topic, and I could not describe the different causes any better than Wikipedia does, so if you want to learn more, you should check out their [article about color blindness](#).

Dichromacy



Original Color

41.5322, 60.7601, 9.4441

Protanopia

41.7798, 0.3110, -6.7784

Deuteranopia

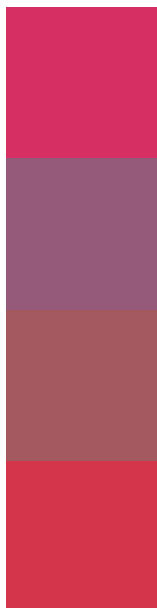
41.5842, 2.8093, 11.2369



Tritanopia

41.5200, 53.7516, 20.6169

Trichromacy



Original Color

41.5322, 60.7601, 9.4441

Protanomaly

38.8678, 21.8264, -3.7545

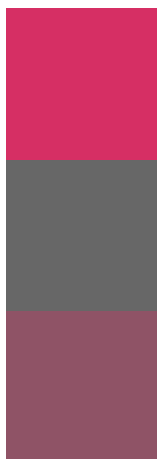
Deuteranomaly

39.6209, 24.6648, 8.6450

Tritanomaly

41.4569, 56.4041, 17.2676

Monochromacy



Original Color

41.5322, 60.7601, 9.4441

Achromatopsia

36.8284, -1.9651, 2.0010

Achromatomaly

36.0353, 20.2517, 1.8770

CSS Examples

Text

The CSS property to change the color of the text to HunterLab 41.5322, 60.7601, 9.4441 is called "color". The color property can be set on classes, ids or directly on the HTML element.

This example shows how text in the color `rgb(214, 47, 100)` looks like.

```
.text, #text, p{  
    color:rgb(214, 47, 100)  
}
```

If you want to add a text shadow in that color use the text-shadow property, you can generate a text shadow directly with our [CSS Text Shadow Generator](#).

Here you see how black text with a 4 pixel rgb(214, 47, 100) colored shadow looks like.

```
.shadow{ text-shadow: 4px 4px 2px rgb(214, 47, 100) }
```

Border

The CSS property to change the border of an element to HunterLab 41.5322, 60.7601, 9.4441 is called "border". The border property can be set on classes, ids or directly on the HTML element.

This example shows the color as border, it can be applied via the CSS property "border" or "border-color".

```
.border, #border, table{ border:4px solid rgb(214, 47, 100) }
```


If only the border color should be changed use the property `border-color`.

```
.border{ border-color:rgb(214, 47, 100) }
```

If you want to add a box shadow in that color use:

Here you see how a box with a 4 pixel `rgb(214, 47, 100)` colored shadow looks like.

```
.boxshadow{ -moz-box-shadow:4px 4px 4px  
4px rgb(214, 47, 100); -webkit-box-  
shadow:4px 4px 4px 4px rgb(214, 47, 100);  
box-shadow:4px 4px 4px 4px rgb(214, 47,  
100) }
```

Background

The CSS property to change the background color of an element to HunterLab 41.5322, 60.7601, 9.4441 is called "background". The background property can be set on classes, ids or directly on the HTML element.

```
.background, #background, body{  
background: rgb(214, 47, 100) }
```

If only the background color should be changed can be used:

```
.background{ background-color: rgb(214, 47,  
100) }
```

This example shows the color as background, it is applied via the CSS property "background".

To optimize and compress your CSS code, you can use our [online CSS compressor and optimizer](#) based on csstidy. If you want to create a linear or radial gradient as background or border, check our [CSS Gradient Generator](#).

Hey! You found this booklet interesting? Support Converting Colors with the new Membership Option!

The pro membership hides all ads, plus gives you double the colors in the color bucket, and more awesome pro features!

[Learn more, Memberships starting at \\$2.50/m!](#)

**Follow me
on Twitter!**

@ConvertingColor