

Converting Colors

HunterLab(41.6450, 10.3244,
15.3109)

Have a look what the booklet for
HunterLab(41.6450, 10.3244,
15.3109) contains.

HunterLab(41.6450, 10.3244, 15.3109)	3
<i>Conversions</i>	4
<i>Details</i>	6
<i>Harmonies</i>	12
<i>Previews</i>	24
<i>Color Blindness Simulation</i>	28
<i>CSS Examples</i>	31

Color

**HunterLab(41.6450, 10.3244,
15.3109)**

Conversions

Conversions Part 1

Format	Color
Hex	98694F
RGB	152, 105, 79
RGB Percent	60%, 41%, 31%
CMY	0.4039, 0.5882, 0.6902
CMYK	0.00, 0.31, 0.48, 0.40
HSL	21°, 32%, 45%
HSV	21°, 48%, 60%
XYZ	19.4117, 17.3431, 9.7216
YIQ	116.0890, 36.3580, 1.8780

Conversions

Conversions Part 2

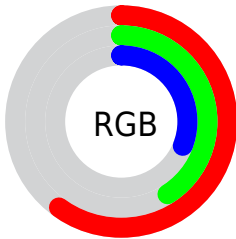
Format	Color
R_{YB}	152, 119, 79
Decimal	9988431
CIE _{Lab}	48.69, 15.61, 22.14
CIE _{LCh}	49, 27.096, 54.812
Yxy	17.3439, 0.4177, 0.3732
Android (android.graphics.Color)	4288178511 (0xFF98694F)
YUV	116.0890, -18.2849, 31.4939
Hunter-Lab	41.6450, 10.3244, 15.3109

Details

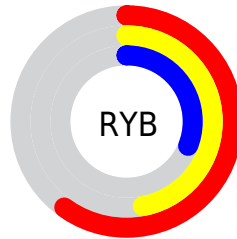
The HunterLab color **41.6450, 10.3244, 15.3109** is a dark color, and the websafe version is hex **996633**. A complement of this color would be **43.4167, -8.7493, -13.9661**, and the grayscale version is **41.8844, -2.2348, 2.2757**.

A 20% lighter version of the original color is **62.2458, 10.9302, 19.0946**, and **23.9547, 9.0390, 11.1733** is the 20% darker color. If you saturate the color by 10%, you get **39.0732, 13.7633, 17.0025**, and if you desaturate by 10%, it is **44.3855, 7.1207, 13.2659**.

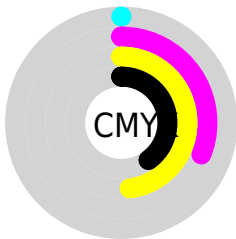
Distribution



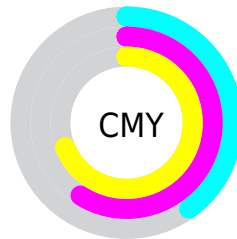
- Red (60%)
- Green (41%)
- Blue (31%)



- Red (60%)
- Yellow (47%)
- Blue (31%)



- Cyan (0%)
- Magenta (31%)
- Yellow (48%)
- Black (40%)



- Cyan (40%)
- Magenta (59%)
- Yellow (69%)

Brightness & Saturation Gradients

These gradients show how the HunterLab color 41.6450, 10.3244, 15.3109 changes by changing the brightness by 10 percent. The first figure shows a shift by +10% for each color and the second figure -10%.

Similar to the brightness gradients but the following saturation gradients show a change of the HunterLab color 41.6450, 10.3244, 15.3109 by changing the saturation by 10% instead.

41.6450, 10.3244,
15.3109

41.6450, 10.3244,
15.3109

153.9956, 10.5630,
31.1460

32.3728, 9.9236,
13.2989

62.3828, 10.8384,
19.0799

23.9131, 9.4098,
11.1528

73.7518, 10.9778,
20.8794

16.3542, 8.7579,
8.8929

85.7381, 11.0490,
22.6413

9.8199, 7.9371,
6.8739

98.3114, 11.0581,
24.3748

0.0000, INF, NaN

0.0000, NaN, NaN

111.4456, 11.0102,
26.0871

0.0000, NaN, NaN

125.1176, 10.9094,

0.0000, NaN, NaN

139.3070, 10.7593,
29.4688

■ 41.6450, 10.3244,
15.3109

■ 41.6450, 10.3244,
15.3109

■ 39.0732, 13.7633,
17.0025

■ 44.3855, 7.1207,
13.2659

■ 36.6868, 17.4296,
18.2864

■ 47.2737, 4.1568,
10.9148

■ 34.5078, 21.2849,
19.1131

■ 50.2951, 1.4202,
8.3018

■ 32.5577, 25.2618,
19.4462

■ 53.4358, -1.1047,
5.4637

■ 30.8508, 29.2308,
19.3562

■ 56.6839, -3.4356,
2.4317

■ 30.5404, 29.9860,
19.3438

■ 60.0293, -5.5904,
-0.7685

■ 63.4630, -7.5869,
-4.1157

■ 66.9774, -9.4412,
-7.5925

■ 70.5660, -11.1682,
-11.1844

Harmonies

Analogous

The Analogous color harmony consists of three colors that are next to each other on the color wheel.



41.6460, 18.1696, 9.6796



41.6450, 10.3244, 15.3109



41.6460, -0.3454, 17.4403

Triad

The Triadic color harmony groups three colors that are evenly spaced from another and form a triangle on the color wheel.



41.6460, 10.3224, 15.3115



41.6460, -20.8165, 4.0001



41.6460, 6.7765, -19.7285

Complementary

The Complementary color scheme is a pair of colors which are on the opposite of each other on the color wheel.



41.6450, 10.3244, 15.3109



43.4167, -8.7493, -13.9661

Split Complementary

Split-complementary colors differ from the complementary color scheme. The scheme consists of three colors, the original color and two neighbors of the complement color.



41.6460, -4.0706, -22.3487



41.6450, 10.3244, 15.3109



41.6460, -19.3201, -6.8222

Square

The Square scheme is like the rectangle color scheme, but the four colors are evenly spaced on the color wheel.



41.6460, 10.3224, 15.3115



41.6460, -17.7566, 12.0513



41.6460, -13.4418, -17.1363



41.6460, 15.9817, -10.6789

Rectangle

The Rectangle color scheme consists of four colors that form a rectangle on the color wheel.



41.6450, 10.3244, 15.3109



41.6460, -7.3603, 17.1092



41.6460, -13.4418, -17.1363



41.6460, 3.1732, -21.4733

Sweetspot

The Sweet Spot groups the original color and five complimentary colors.



41.6460, 10.3224, 15.3115



68.3691, 0.5960, 9.6470



37.1288, 28.9644, -8.3782



32.1998, 0.6100, 4.9530



87.6224, -4.6753, 4.7607



35.4919, -1.8938, 1.9283

Same Dimension

The Same Dimension uses a secret algorithm to generate beautiful new colors.



41.6460, 10.3224, 15.3115



51.5494, 18.8085, 22.8049



51.2878, -6.5995, 22.9363



25.6219, -0.3918, 2.8092



28.0622, 27.1975, 17.7680



4.2693, 1.3763, 2.6548

Inverse Universe

The Inverse Universe completely reimagines the original color for something new.



43.4167, -8.7493, -13.9661



54.3328, -11.7137, -23.9430



33.5162, 8.1535, -31.7540



25.7994, -2.2570, -0.0657



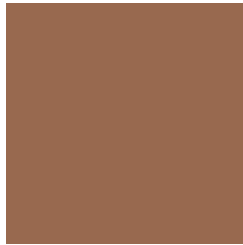
30.4341, -3.8000, -29.8370



4.5454, -1.6657, -2.0855

Previews

White Background



This preview shows how the HunterLab color 41.6450, 10.3244, 15.3109 looks on a white background.

Color Contrast Check

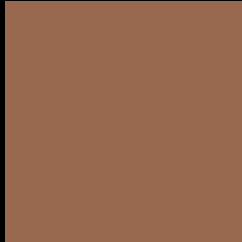
Large Text (above 18pt) WCAG AA ✓ Pass

Any Text WCAG AA ✓ Pass

Large Text (above 18pt) WCAG AAA ✓ Pass

Any Text WCAG AAA × Fail

Black Background



This preview shows how the HunterLab color 41.6450, 10.3244, 15.3109 looks on a black background.

Color Contrast Check

Large Text (above 18pt) WCAG AA ✓ Pass

Any Text WCAG AA × Fail

Large Text (above 18pt) WCAG AAA × Fail

Any Text WCAG AAA × Fail

If you want to check with other color combinations, try the [Color Contrast Checker](#).

HunterLab 41.6450, 10.3244, 15.3109 Background



This preview shows how black text looks on a background with the HunterLab color 41.6450, 10.3244, 15.3109.



This preview shows how white text looks on a background with the HunterLab color 41.6450, 10.3244,

Color Blindness Simulation

Color vision deficiency is a very complex topic, and I could not describe the different causes any better than Wikipedia does, so if you want to learn more, you should check out their [article about color blindness](#).

Dichromacy



Original Color

41.6450, 10.3244, 15.3109

Protanopia

41.8221, -3.6058, 13.8167

Deuteranopia

41.7228, 2.7401, 15.5148



Tritanopia

41.6894, 16.6655, 5.4044

Trichromacy



Original Color

41.6450, 10.3244, 15.3109

Protanomaly

41.6515, 1.2881, 14.3248

Deuteranomaly

41.7332, 5.4331, 15.5710

Tritanomaly

41.5387, 14.4649, 9.3558

Monochromacy



Original Color

41.6450, 10.3244, 15.3109

Achromatopsia

41.7908, -2.2299, 2.2706

Achromatomaly

41.5147, 1.7147, 7.2850

CSS Examples

Text

The CSS property to change the color of the text to HunterLab 41.6450, 10.3244, 15.3109 is called "color". The color property can be set on classes, ids or directly on the HTML element.

This example shows how text in the color `rgb(152, 105, 79)` looks like.

```
.text, #text, p{  
    color:rgb(152, 105, 79)  
}
```

If you want to add a text shadow in that color use the text-shadow property, you can generate a text shadow directly with our [CSS Text Shadow Generator](#).

Here you see how black text with a 4 pixel rgb(152, 105, 79) colored shadow looks like.

```
.shadow{ text-shadow: 4px 4px 2px rgb(152, 105, 79) }
```

Border

The CSS property to change the border of an element to HunterLab 41.6450, 10.3244, 15.3109 is called "border". The border property can be set on classes, ids or directly on the HTML element.

This example shows the color as border, it can be applied via the CSS property "border" or "border-color".

```
.border, #border, table{ border:4px solid rgb(152, 105, 79) }
```


If only the border color should be changed use the property `border-color`.

```
.border{ border-color:rgb(152, 105, 79) }
```

If you want to add a box shadow in that color use:

Here you see how a box with a 4 pixel `rgb(152, 105, 79)` colored shadow looks like.

```
.boxshadow{ -moz-box-shadow:4px 4px 4px  
4px rgb(152, 105, 79); -webkit-box-  
shadow:4px 4px 4px 4px rgb(152, 105, 79);  
box-shadow:4px 4px 4px 4px rgb(152, 105,  
79) }
```

Background

The CSS property to change the background color of an element to HunterLab 41.6450, 10.3244, 15.3109 is called "background". The background property can be set on classes, ids or directly on the HTML element.

```
.background, #background, body{  
background: rgb(152, 105, 79) }
```

If only the background color should be changed can be used:

```
.background{ background-color: rgb(152,  
105, 79) }
```

This example shows the color as background, it is applied via the CSS property "background".

To optimize and compress your CSS code, you can use our [online CSS compressor and optimizer](#) based on csstidy. If you want to create a linear or radial gradient as background or border, check our [CSS Gradient Generator](#).

Hey! You found this booklet interesting? Support Converting Colors with the new Membership Option!

The pro membership hides all ads, plus gives you double the colors in the color bucket, and more awesome pro features!

[Learn more, Memberships starting at \\$2.50/m!](#)

**Follow me
on Twitter!**

@ConvertingColor