

Converting Colors

HunterLab(41.6552, 4.8469,
3.5443)

Have a look what the booklet for
HunterLab(41.6552, 4.8469, 3.5443)
contains.

HunterLab(41.5327, 4.9892, 3.3773)	3
<i>Conversions</i>	4
<i>Details</i>	6
<i>Harmonies</i>	12
<i>Previews</i>	24
<i>Color Blindness Simulation</i>	28
<i>CSS Examples</i>	31

Color

**HunterLab(41.5327, 4.9892,
3.3773)**

Conversions

Conversions Part 1

Format	Color
Hex	846E71
RGB	132, 110, 113
RGB Percent	52%, 43%, 44%
CMY	0.4824, 0.5686, 0.5569
CMYK	0.00, 0.17, 0.14, 0.48
HSL	352°, 9%, 47%
HSV	352°, 17%, 52%
XYZ	18.0723, 17.2497, 17.9998
YIQ	116.9200, 12.1490, 5.5970

Conversions

Conversions Part 2

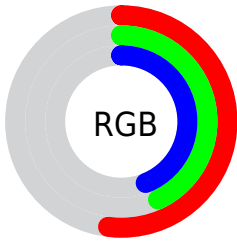
Format	Color
R_{YB}	132, 110, 113
Decimal	8679025
CIE _{Lab}	48.57, 9.18, 1.57
CIE _{LCh}	49, 9.315, 9.693
Yxy	17.2504, 0.3389, 0.3235
Android (android.graphics.Color)	4286869105 (0xFF846E71)
YUV	116.9200, -1.9326, 13.2252
Hunter-Lab	41.5327, 4.9892, 3.3773

Details

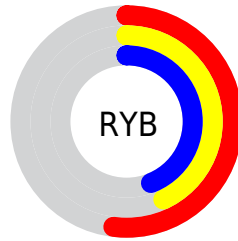
The HunterLab color $41.5327, 4.9892, 3.3773$ is a dark color, and the websafe version is hex 666666 . A complement of this color would be $46.2633, -9.0226, 1.7310$, and the grayscale version is $42.1506, -2.2491, 2.2901$.

A 20% lighter version of the original color is $62.3471, 4.6096, 4.6468$, and $23.7081, 4.8631, 2.1872$ is the 20% darker color. If you saturate the color by 10%, you get $37.9078, 9.7120, 4.0304$, and if you desaturate by 10%, it is $45.3734, 0.4085, 2.8740$.

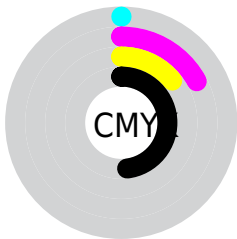
Distribution



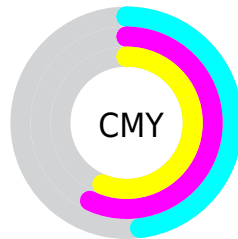
- Red (52%)
- Green (43%)
- Blue (44%)



- Red (52%)
- Yellow (43%)
- Blue (44%)



- Cyan (0%)
- Magenta (17%)
- Yellow (14%)
- Black (48%)



- Cyan (48%)
- Magenta (57%)
- Yellow (56%)

Brightness & Saturation Gradients

These gradients show how the HunterLab color 41.5327, 4.9892, 3.3773 changes by changing the brightness by 10 percent. The first figure shows a shift by +10% for each color and the second figure -10%.

Similar to the brightness gradients but the following saturation gradients show a change of the HunterLab color 41.5327, 4.9892, 3.3773 by changing the saturation by 10% instead.

41.5327, 4.9892,
3.3773

41.5327, 4.9892,
3.3773

153.8218, 2.7231,
10.1158

32.2695, 4.9410,
2.7809

62.2542, 4.8585,
4.6715

23.8197, 4.8030,
2.2189

73.6158, 4.6992,
5.3652

16.2719, 4.5545,
1.6932

85.5951, 4.4848,
6.0886

9.7505, 4.1649,
1.2076

98.1618, 4.2200,
6.8406

0.0000, INF, NaN

0.0000, NaN, NaN

111.2895, 3.9085,
7.6201

0.0000, NaN, NaN

124.9554, 3.5535,

0.0000, NaN, NaN

139.1389, 3.1576,
9.2585

■ 41.5327, 4.9892,
3.3773

■ 41.5327, 4.9892,
3.3773

■ 37.9078, 9.7120,
4.0304

■ 45.3734, 0.4085,
2.8740

■ 34.5346, 14.5594,
4.8522

■ 49.3961, -4.0272,
2.4970

■ 31.4612, 19.4673,
5.8598

■ 53.5770, -8.3311,
2.2275

■ 28.7436, 24.3066,
7.0550

■ 57.8963, -12.5190,
2.0490

■ 26.4436, 28.8554,
8.4126

■ 62.3380, -16.6079,
1.9473

■ 24.6204, 32.7975,
9.8651

■ 66.8890, -20.6134,
1.9110

■ 23.3159, 35.7769,
11.2988

■ 71.5389, -24.5497,
1.9305

■ 22.4906, 37.6776,
12.5450

■ 76.2786, -28.4292,
1.9979

■ 22.2468, 38.2945,
12.8551

■ 81.1009, -32.2625,
2.1067

Harmonies

Analogous

The Analogous color harmony consists of three colors that are next to each other on the color wheel.



41.5336, 4.6270, -0.1433



41.5327, 4.9892, 3.3773



41.5336, 3.3668, 6.3334

Triad

The Triadic color harmony groups three colors that are evenly spaced from another and form a triangle on the color wheel.



41.5336, 4.9879, 3.3780



41.5336, -6.6409, 7.1131



41.5336, -4.6452, -4.5591

Complementary

The Complementary color scheme is a pair of colors which are on the opposite of each other on the color wheel.



41.5327, 4.9892, 3.3773



46.2633, -9.0226, 1.7310

Split Complementary

Split-complementary colors differ from the complementary color scheme. The scheme consists of three colors, the original color and two neighbors of the complement color.



41.5336, -7.5232, -2.2712



41.5327, 4.9892, 3.3773



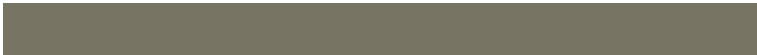
41.5336, -8.6472, 4.5293

Square

The Square scheme is like the rectangle color scheme, but the four colors are evenly spaced on the color wheel.



41.5336, 4.9879, 3.3780



41.5336, -3.4028, 8.3626



41.5336, -8.9645, 1.1116



41.5336, -1.0205, -4.9352

Rectangle

The Rectangle color scheme consists of four colors that form a rectangle on the color wheel.



41.5327, 4.9892, 3.3773



41.5336, 1.4124, 7.6614



41.5336, -8.9645, 1.1116



41.5336, -5.7285, -3.9792

Sweetspot

The Sweet Spot groups the original color and five complimentary colors.



41.5336, 4.9879, 3.3780



61.0340, -0.3843, 3.7263



41.7879, 6.9593, -5.1018



29.2973, -0.0125, 1.8142



82.0889, -4.3801, 4.4600



30.7619, -1.6414, 1.6714

Same Dimension

The Same Dimension uses a secret algorithm to generate beautiful new colors.



41.5336, 4.9879, 3.3780



53.2679, 8.9694, 4.7861



43.4952, 0.9297, 6.7077



21.6755, 0.7440, 1.4573



21.8919, 37.6859, 12.6317



1.3121, 2.3051, 0.3980

Inverse Universe

The Inverse Universe completely reimagines the original color for something new.



41.5336, 4.9879, 3.3780



53.2679, 8.9694, 4.7861



44.1273, -5.0529, -2.2285



21.6755, 0.7440, 1.4573



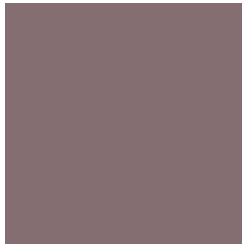
21.8919, 37.6859, 12.6317



1.3121, 2.3051, 0.3980

Previews

White Background



This preview shows how the HunterLab color 41.5327, 4.9892, 3.3773 looks on a white background.

Color Contrast Check

Large Text (above 18pt) WCAG AA ✓ Pass

Any Text WCAG AA ✓ Pass

Large Text (above 18pt) WCAG AAA ✓ Pass

Any Text WCAG AAA × Fail

Black Background



This preview shows how the HunterLab color 41.5327, 4.9892, 3.3773 looks on a black background.

Color Contrast Check

Large Text (above 18pt) WCAG AA ✓ Pass

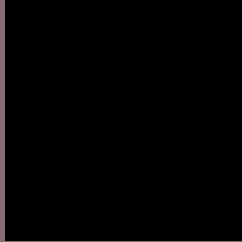
Any Text WCAG AA × Fail

Large Text (above 18pt) WCAG AAA × Fail

Any Text WCAG AAA × Fail

If you want to check with other color combinations, try the [Color Contrast Checker](#).

HunterLab 41.5327, 4.9892, 3.3773 Background



This preview shows how black text looks on a background with the HunterLab color 41.5327, 4.9892, 3.3773.



This preview shows how white text looks on a background with the HunterLab color 41.5327, 4.9892,

Color Blindness Simulation

Color vision deficiency is a very complex topic, and I could not describe the different causes any better than Wikipedia does, so if you want to learn more, you should check out their [article about color blindness](#).

Dichromacy



Original Color

41.5327, 4.9892, 3.3773

Protanopia

41.5985, -1.4838, 2.0567

Deuteranopia

41.6771, 2.7740, 3.5047



Tritanopia

41.5112, 6.5256, 1.2131

Trichromacy



Original Color

41.5327, 4.9892, 3.3773

Protanomaly

41.4556, 0.7622, 2.3606

Deuteranomaly

41.5069, 3.5603, 3.3226

Tritanomaly

41.4545, 6.2267, 2.0212

Monochromacy



Original Color

41.5327, 4.9892, 3.3773

Achromatopsia

42.1768, -2.2504, 2.2915

Achromatomaly

41.7530, 0.4464, 2.2729

CSS Examples

Text

The CSS property to change the color of the text to HunterLab 41.5327, 4.9892, 3.3773 is called "color". The color property can be set on classes, ids or directly on the HTML element.

This example shows how text in the color `rgb(132, 110, 113)` looks like.

```
.text, #text, p{  
    color:rgb(132, 110, 113)  
}
```

If you want to add a text shadow in that color use the text-shadow property, you can generate a text shadow directly with our [CSS Text Shadow Generator](#).

Here you see how black text with a 4 pixel rgb(132, 110, 113) colored shadow looks like.

```
.shadow{ text-shadow: 4px 4px 2px rgb(132, 110, 113) }
```

Border

The CSS property to change the border of an element to HunterLab 41.5327, 4.9892, 3.3773 is called "border". The border property can be set on classes, ids or directly on the HTML element.

This example shows the color as border, it can be applied via the CSS property "border" or "border-color".

```
.border, #border, table{ border:4px solid rgb(132, 110, 113) }
```


If only the border color should be changed use the property `border-color`.

```
.border{ border-color:rgb(132, 110, 113) }
```

If you want to add a box shadow in that color use:

Here you see how a box with a 4 pixel `rgb(132, 110, 113)` colored shadow looks like.

```
.boxshadow{ -moz-box-shadow:4px 4px 4px  
4px rgb(132, 110, 113); -webkit-box-  
shadow:4px 4px 4px 4px rgb(132, 110, 113);  
box-shadow:4px 4px 4px 4px rgb(132, 110,  
113) }
```

Background

The CSS property to change the background color of an element to HunterLab 41.5327, 4.9892, 3.3773 is called "background". The background property can be set on classes, ids or directly on the HTML element.

```
.background, #background, body{  
background: rgb(132, 110, 113) }
```

If only the background color should be changed can be used:

```
.background{ background-color: rgb(132,  
110, 113) }
```

This example shows the color as background, it is applied via the CSS property "background".

To optimize and compress your CSS code, you can use our [online CSS compressor and optimizer](#) based on csstidy. If you want to create a linear or radial gradient as background or border, check our [CSS Gradient Generator](#).

Hey! You found this booklet interesting? Support Converting Colors with the new Membership Option!

The pro membership hides all ads, plus gives you double the colors in the color bucket, and more awesome pro features!

[Learn more, Memberships starting at \\$2.50/m!](#)

**Follow me
on Twitter!**

@ConvertingColor