

Converting Colors

HunterLab(41.8606, 54.1978,
2.1983)

Have a look what the booklet for
HunterLab(41.8606, 54.1978,
2.1983) contains.

HunterLab(41.8411, 54.3373, 2.0025)	3
<i>Conversions</i>	4
<i>Details</i>	6
<i>Harmonies</i>	12
<i>Previews</i>	24
<i>Color Blindness Simulation</i>	28
<i>CSS Examples</i>	31

Color

**HunterLab(41.8411, 54.3373,
2.0025)**

Conversions

Conversions Part 1

Format	Color
Hex	CC3D77
RGB	204, 61, 119
RGB Percent	80%, 24%, 47%
CMY	0.2000, 0.7607, 0.5333
CMYK	0.00, 0.70, 0.42, 0.20
HSL	336°, 58%, 52%
HSV	336°, 70%, 80%
XYZ	29.9004, 17.5068, 19.2560
YIQ	110.3690, 66.6100, 48.3540

Conversions

Conversions Part 2

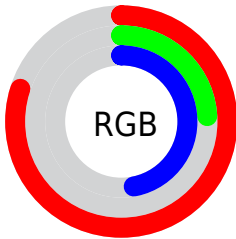
Format	Color
R_{YB}	204, 61, 119
Decimal	13385079
CIE _{Lab}	48.89, 60.34, -0.38
CIE _{LCh}	49, 60.345, 359.642
Yxy	17.5077, 0.4485, 0.2626
Android (android.graphics.Color)	4291575159 (0xFFCC3D77)
YUV	110.3690, 4.2551, 82.1144
Hunter-Lab	41.8411, 54.3373, 2.0025

Details

The HunterLab color **41.8411, 54.3373, 2.0025** is a dark color, and the websafe version is hex **CC3366**. The color can be described as dark muted rose. A complement of this color would be **68.0101, -43.6733, 17.4325**, and the grayscale version is **39.5966, -2.1128, 2.1514**.

A 20% lighter version of the original color is **60.9567, 54.5853, 1.0422**, and **25.4454, 45.3638, 2.5833** is the 20% darker color. If you saturate the color by 10%, you get **39.3131, 59.8268, 4.3462**, and if you desaturate by 10%, it is **45.1944, 47.2185, 0.4462**.

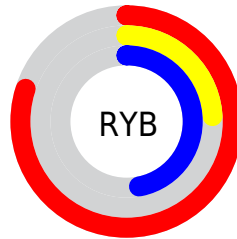
Distribution



Red (80%)

Green (24%)

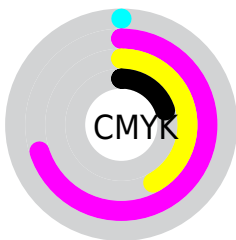
Blue (47%)



Red (80%)

Yellow (24%)

Blue (47%)

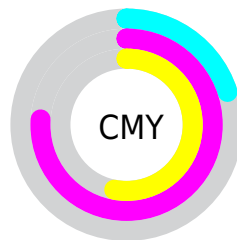


Cyan (0%)

Magenta (70%)

Yellow (42%)

Black (20%)



Cyan (20%)

Magenta (76%)

Yellow (53%)

Brightness & Saturation Gradients

These gradients show how the HunterLab color 41.8411, 54.3373, 2.0025 changes by changing the brightness by 10 percent. The first figure shows a shift by +10% for each color and the second figure -10%.

Similar to the brightness gradients but the following saturation gradients show a change of the HunterLab color 41.8411, 54.3373, 2.0025 by changing the saturation by 10% instead.

41.8411, 54.3373,
2.0025

41.8411, 54.3373,
2.0025

154.2989, 69.3493,
7.9765

32.5533, 52.2104,
1.5198

62.6073, 58.3477,
3.0948

24.0762, 50.0835,
1.0823

73.9891, 60.2060,
3.6965

16.4980, 48.1335,
0.6966

85.9876, 61.9625,
4.3327

9.9413, 46.9281,
0.3705

98.5726, 63.6200,
5.0016

0.0000, INF, NaN

0.0000, INF, NaN

111.7179, 65.1828,
5.7017

0.0000, NaN, NaN

125.4006, 66.6556,

0.0000, NaN, NaN

139.6003, 68.0429,
7.1902

■ 41.8411, 54.3373,
2.0025

■ 41.8411, 54.3373,
2.0025

■ 39.3131, 59.8268,
4.3462

■ 45.1944, 47.2185,
0.4462

■ 37.6387, 63.1735,
7.3392

■ 49.2884, 39.0927,
-0.3254

■ 36.6849, 64.5152,
10.5949

■ 54.0252, 30.4649,
-0.3930

■ 59.3076, 21.6806,
0.1302

■ 65.0502, 12.9407,
1.1321

■ 71.1818, 4.3450,
2.5161

■ 77.6444, -4.0683,
4.2049

■ 84.3917, -12.2955,
6.1382

■ 91.3866, -20.3497,
8.2699

Harmonies

Analogous

The Analogous color harmony consists of three colors that are next to each other on the color wheel.



41.8422, 45.2487, -26.3799



41.8411, 54.3373, 2.0025



41.8422, 45.6530, 18.6404

Triad

The Triadic color harmony groups three colors that are evenly spaced from another and form a triangle on the color wheel.



41.8422, 54.3338, 2.0036



41.8422, -22.6200, 25.2399



41.8422, -23.0157, -55.7103

Complementary

The Complementary color scheme is a pair of colors which are on the opposite of each other on the color wheel.



41.8411, 54.3373, 2.0025



68.0101, -43.6733, 17.4325

Split Complementary

Split-complementary colors differ from the complementary color scheme. The scheme consists of three colors, the original color and two neighbors of the complement color.



41.8422, -35.1477, -25.6175



41.8411, 54.3373, 2.0025



41.8422, -34.9579, 18.8927

Square

The Square scheme is like the rectangle color scheme, but the four colors are evenly spaced on the color wheel.



41.8422, 54.3338, 2.0036



41.8422, -1.9474, 26.6489



41.8422, -38.9801, 2.5497



41.8422, -2.5215, -69.2374

Rectangle

The Rectangle color scheme consists of four colors that form a rectangle on the color wheel.



41.8411, 54.3373, 2.0025



41.8422, 31.8674, 23.7697



41.8422, -38.9801, 2.5497



41.8422, -28.0241, -46.5903

Sweetspot

The Sweet Spot groups the original color and five complimentary colors.



41.8422, 54.3338, 2.0036



82.8131, 17.9725, 1.2769



36.9666, 51.8896, -67.9373



37.3397, 9.7662, 0.4066

0.0000, NaN, NaN



46.2646, -2.4686, 2.5136

Same Dimension

The Same Dimension uses a secret algorithm to generate beautiful new colors.



41.8422, 54.3338, 2.0036



49.3781, 79.5178, 7.4332



42.3434, 44.4484, 20.6864



33.5974, 1.7599, 1.2313



29.1340, 51.2930, 7.9725



6.7291, 12.0583, 0.2046

Inverse Universe

The Inverse Universe completely reimagines the original color for something new.



41.8422, 54.3338, 2.0036



49.3781, 79.5178, 7.4332



65.6416, -28.6919, -11.6533



33.5974, 1.7599, 1.2313



29.1340, 51.2930, 7.9725



6.7291, 12.0583, 0.2046

Previews

White Background



This preview shows how the HunterLab color 41.8411, 54.3373, 2.0025 looks on a white background.

Color Contrast Check

Large Text (above 18pt) WCAG AA ✓ Pass

Any Text WCAG AA ✓ Pass

Large Text (above 18pt) WCAG AAA ✓ Pass

Any Text WCAG AAA × Fail

Black Background



This preview shows how the HunterLab color 41.8411, 54.3373, 2.0025 looks on a black background.

Color Contrast Check

Large Text (above 18pt) WCAG AA ✓ Pass

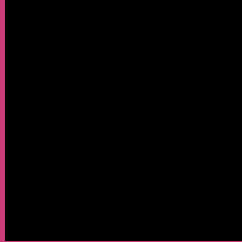
Any Text WCAG AA ✓ Pass

Large Text (above 18pt) WCAG AAA ✓ Pass

Any Text WCAG AAA × Fail

If you want to check with other color combinations, try the [Color Contrast Checker](#).

HunterLab 41.8411, 54.3373, 2.0025 Background



This preview shows how black text looks on a background with the HunterLab color 41.8411, 54.3373, 2.0025.



This preview shows how white text looks on a background with the HunterLab color 41.8411, 54.3373,

Color Blindness Simulation

Color vision deficiency is a very complex topic, and I could not describe the different causes any better than Wikipedia does, so if you want to learn more, you should check out their [article about color blindness](#).

Dichromacy



Original Color

41.8411, 54.3373, 2.0025

Protanopia

42.3279, 2.0806, -16.0952

Deuteranopia

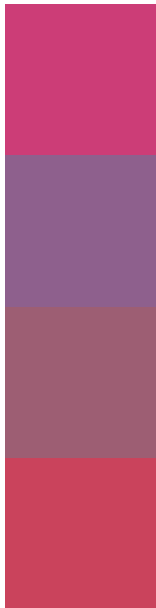
42.1022, 2.7868, 4.4047



Tritanopia

41.7682, 45.0497, 16.8202

Trichromacy



Original Color

41.8411, 54.3373, 2.0025

Protanomaly

40.0495, 19.7035, -12.2823

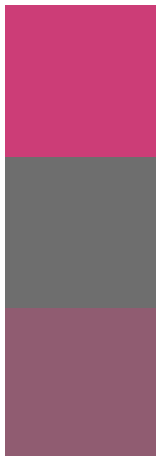
Deuteranomaly

40.5109, 21.6448, 1.6031

Tritanomaly

41.6456, 48.4017, 12.0941

Monochromacy



Original Color

41.8411, 54.3373, 2.0025

Achromatopsia

39.4875, -2.1070, 2.1454

Achromatomaly

38.4394, 17.7540, -0.1001

CSS Examples

Text

The CSS property to change the color of the text to HunterLab 41.8411, 54.3373, 2.0025 is called "color". The color property can be set on classes, ids or directly on the HTML element.

This example shows how text in the color `rgb(204, 61, 119)` looks like.

```
.text, #text, p{  
    color:rgb(204, 61, 119)  
}
```

If you want to add a text shadow in that color use the text-shadow property, you can generate a text shadow directly with our [CSS Text Shadow Generator](#).

Here you see how black text with a 4 pixel rgb(204, 61, 119) colored shadow looks like.

```
.shadow{ text-shadow: 4px 4px 2px rgb(204, 61, 119) }
```

Border

The CSS property to change the border of an element to HunterLab 41.8411, 54.3373, 2.0025 is called "border". The border property can be set on classes, ids or directly on the HTML element.

This example shows the color as border, it can be applied via the CSS property "border" or "border-color".

```
.border, #border, table{ border:4px solid rgb(204, 61, 119) }
```


If only the border color should be changed use the property `border-color`.

```
.border{ border-color:rgb(204, 61, 119) }
```

If you want to add a box shadow in that color use:

Here you see how a box with a 4 pixel `rgb(204, 61, 119)` colored shadow looks like.

```
.boxshadow{ -moz-box-shadow:4px 4px 4px  
4px rgb(204, 61, 119); -webkit-box-  
shadow:4px 4px 4px 4px rgb(204, 61, 119);  
box-shadow:4px 4px 4px 4px rgb(204, 61,  
119) }
```

Background

The CSS property to change the background color of an element to HunterLab 41.8411, 54.3373, 2.0025 is called "background". The background property can be set on classes, ids or directly on the HTML element.

```
.background, #background, body{  
background: rgb(204, 61, 119) }
```

If only the background color should be changed can be used:

```
.background{ background-color: rgb(204, 61,  
119) }
```

This example shows the color as background, it is applied via the CSS property "background".

To optimize and compress your CSS code, you can use our [online CSS compressor and optimizer](#) based on csstidy. If you want to create a linear or radial gradient as background or border, check our [CSS Gradient Generator](#).

Hey! You found this booklet interesting? Support Converting Colors with the new Membership Option!

The pro membership hides all ads, plus gives you double the colors in the color bucket, and more awesome pro features!

[Learn more, Memberships starting at \\$2.50/m!](#)

**Follow me
on Twitter!**

@ConvertingColor