

Converting Colors

HunterLab(41.9122, 4.0718,
9.7947)

Have a look what the booklet for
HunterLab(41.9122, 4.0718, 9.7947)
contains.

HunterLab(41.8931, 4.0582, 9.8797)	3
<i>Conversions</i>	4
<i>Details</i>	6
<i>Harmonies</i>	12
<i>Previews</i>	24
<i>Color Blindness Simulation</i>	28
<i>CSS Examples</i>	31

Color

**HunterLab(41.8931, 4.0582,
9.8797)**

Conversions

Conversions Part 1

Format	Color
Hex	896F61
RGB	137, 111, 97
RGB Percent	54%, 44%, 38%
CMY	0.4627, 0.5647, 0.6196
CMYK	0.00, 0.19, 0.29, 0.46
HSL	21°, 17%, 46%
HSV	21°, 29%, 54%
XYZ	18.1586, 17.5503, 13.7398
YIQ	117.1780, 19.9900, 1.1580

Conversions

Conversions Part 2

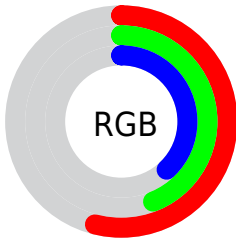
Format	Color
RYB	137, 119, 97
Decimal	9006945
CIELab	48.95, 8.03, 11.66
CIELCh	49, 14.159, 55.445
Yxy	17.5511, 0.3672, 0.3549
Android (android.graphics.Color)	4287197025 (0xFF896F61)
YUV	117.1780, -9.9478, 17.3839
Hunter-Lab	41.8931, 4.0582, 9.8797

Details

The HunterLab color $41.8931, 4.0582, 9.8797$ is a dark color, and the websafe version is hex 996666 . A complement of this color would be $43.0266, -6.7290, -6.2177$, and the grayscale version is $42.2782, -2.2559, 2.2971$.

A 20% lighter version of the original color is $62.7765, 3.6743, 12.2859$, and $24.0260, 4.1124, 7.1478$ is the 20% darker color. If you saturate the color by 10%, you get $39.3318, 6.7354, 11.9257$, and if you desaturate by 10%, it is $44.5760, 1.5781, 7.6067$.

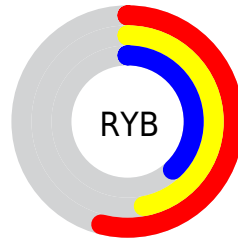
Distribution



Red (54%)

Green (44%)

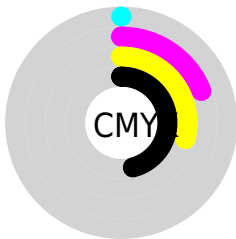
Blue (38%)



Red (54%)

Yellow (47%)

Blue (38%)

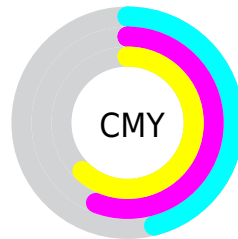


Cyan (0%)

Magenta (19%)

Yellow (29%)

Black (46%)



Cyan (46%)

Magenta (56%)

Yellow (62%)

Brightness & Saturation Gradients

These gradients show how the HunterLab color 41.8931, 4.0582, 9.8797 changes by changing the brightness by 10 percent. The first figure shows a shift by +10% for each color and the second figure -10%.

Similar to the brightness gradients but the following saturation gradients show a change of the HunterLab color 41.8931, 4.0582, 9.8797 by changing the saturation by 10% instead.

■ 41.8931, 4.0582,
9.8797

■ 41.8931, 4.0582,
9.8797

154.3790, 1.3170,
20.8925

■ 32.6009, 4.0782,
8.6288

■ 62.6665, 3.8034,
12.3252

■ 24.1193, 4.0145,
7.3372

■ 74.0518, 3.5871,
13.5364

■ 16.5360, 3.8475,
5.9759

■ 86.0535, 3.3186,
14.7473

■ 9.9734, 3.5487,
5.4165

■ 98.6416, 3.0021,
15.9614

0.0000, INF, NaN

0.0000, NaN, NaN

111.7898, 2.6409,
17.1814

0.0000, NaN, NaN

125.4753, 2.2381,

0.0000, NaN, NaN

139.6778, 1.7961,
19.6456

■ 41.8931, 4.0582,
9.8797

■ 41.8931, 4.0582,
9.8797

■ 39.3318, 6.7354,
11.9257

■ 44.5760, 1.5781,
7.6067

■ 36.9034, 9.6227,
13.7046

■ 47.3653, -0.7134,
5.1374

■ 34.6250, 12.7184,
15.1736

■ 50.2511, -2.8331,
2.4998

■ 32.5144, 16.0081,
16.2867

■ 53.2242, -4.7969,
-0.2836

■ 30.5905, 19.4570,
16.9996

■ 56.2767, -6.6202,
-3.1942

■ 28.8725, 23.0019,
17.2809

■ 59.4016, -8.3173,
-6.2169

■ 27.3685, 26.5049,
17.2599

■ 62.5929, -9.9016,
-9.3389

■ 27.2562, 26.7756,
17.2639

■ 65.8456, -11.3849,
-12.5500

■ 69.1551, -12.7779,
-15.8413

Harmonies

Analogous

The Analogous color harmony consists of three colors that are next to each other on the color wheel.



41.8941, 7.9526, 6.4530



41.8931, 4.0582, 9.8797



41.8941, -1.3776, 11.2723

Triad

The Triadic color harmony groups three colors that are evenly spaced from another and form a triangle on the color wheel.



41.8941, 4.0567, 9.8803



41.8941, -12.4553, 3.0871



41.8941, 2.4973, -8.0817

Complementary

The Complementary color scheme is a pair of colors which are on the opposite of each other on the color wheel.



41.8931, 4.0582, 9.8797



43.0266, -6.7290, -6.2177

Split Complementary

Split-complementary colors differ from the complementary color scheme. The scheme consists of three colors, the original color and two neighbors of the complement color.



41.8941, -3.0907, -9.2896



41.8931, 4.0582, 9.8797



41.8941, -11.5382, -2.3711

Square

The Square scheme is like the rectangle color scheme, but the four colors are evenly spaced on the color wheel.



41.8941, 4.0567, 9.8803



41.8941, -10.7548, 7.6921



41.8941, -8.1809, -7.0792



41.8941, 7.0195, -3.9660

Rectangle

The Rectangle color scheme consists of four colors that form a rectangle on the color wheel.



41.8931, 4.0582, 9.8797



41.8941, -5.0711, 11.0129



41.8941, -8.1809, -7.0792



41.8941, 0.6733, -8.8625

Sweetspot

The Sweet Spot groups the original color and five complimentary colors.



41.8941, 4.0567, 9.8803



63.3841, -0.9540, 6.8758



39.1127, 14.4600, -4.0519



29.7886, -0.2721, 3.4631



83.1908, -4.4389, 4.5199



31.6988, -1.6914, 1.7223

Same Dimension

The Same Dimension uses a secret algorithm to generate beautiful new colors.



41.8941, 4.0567, 9.8803



53.7893, 7.7550, 15.0593



47.3436, -5.2183, 14.9182



23.0573, -0.3513, 2.4956



26.3457, 25.7353, 16.6847



2.6771, 0.8638, 1.6647

Inverse Universe

The Inverse Universe completely reimagines the original color for something new.



43.0266, -6.7290, -6.2177



55.6218, -9.7717, -11.0755



37.4810, 2.4896, -14.2988



23.2354, -2.0360, -0.0226



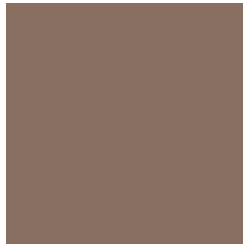
28.9255, -4.0391, -27.4351



2.8832, -1.0885, -1.2540

Previews

White Background



This preview shows how the HunterLab color 41.8931, 4.0582, 9.8797 looks on a white background.

Color Contrast Check

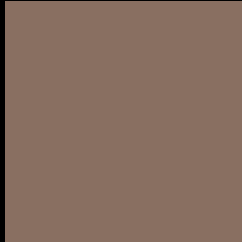
Large Text (above 18pt) WCAG AA ✓ Pass

Any Text WCAG AA ✓ Pass

Large Text (above 18pt) WCAG AAA ✓ Pass

Any Text WCAG AAA × Fail

Black Background



This preview shows how the HunterLab color 41.8931, 4.0582, 9.8797 looks on a black background.

Color Contrast Check

Large Text (above 18pt) WCAG AA ✓ Pass

Any Text WCAG AA ✓ Pass

Large Text (above 18pt) WCAG AAA ✓ Pass

Any Text WCAG AAA × Fail

If you want to check with other color combinations, try the [Color Contrast Checker](#).

HunterLab 41.8931, 4.0582, 9.8797 Background



This preview shows how black text looks on a background with the HunterLab color 41.8931, 4.0582, 9.8797.

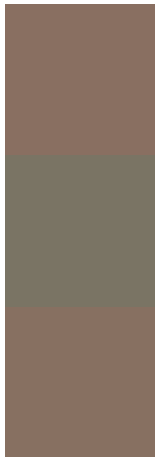


This preview shows how white text looks on a background with the HunterLab color 41.8931, 4.0582,

Color Blindness Simulation

Color vision deficiency is a very complex topic, and I could not describe the different causes any better than Wikipedia does, so if you want to learn more, you should check out their [article about color blindness](#).

Dichromacy



Original Color

41.8931, 4.0582, 9.8797

Protanopia

41.8909, -2.6959, 8.7015

Deuteranopia

41.9551, 2.9201, 9.9217



Tritanopia

41.8311, 8.8141, 2.0767

Trichromacy



Original Color

41.8931, 4.0582, 9.8797

Protanomaly

41.7702, -0.3571, 8.9768

Deuteranomaly

42.0543, 3.2526, 10.0263

Tritanomaly

41.7928, 7.0066, 4.9472

Monochromacy



Original Color

41.8931, 4.0582, 9.8797

Achromatopsia

42.1768, -2.2504, 2.2915

Achromatomaly

42.0385, -0.2906, 5.0932

CSS Examples

Text

The CSS property to change the color of the text to HunterLab 41.8931, 4.0582, 9.8797 is called "color". The color property can be set on classes, ids or directly on the HTML element.

This example shows how text in the color `rgb(137, 111, 97)` looks like.

```
.text, #text, p{  
    color:rgb(137, 111, 97)  
}
```

If you want to add a text shadow in that color use the text-shadow property, you can generate a text shadow directly with our [CSS Text Shadow Generator](#).

Here you see how black text with a 4 pixel rgb(137, 111, 97) colored shadow looks like.

```
.shadow{ text-shadow: 4px 4px 2px rgb(137, 111, 97) }
```

Border

The CSS property to change the border of an element to HunterLab 41.8931, 4.0582, 9.8797 is called "border". The border property can be set on classes, ids or directly on the HTML element.

This example shows the color as border, it can be applied via the CSS property "border" or "border-color".

```
.border, #border, table{ border:4px solid rgb(137, 111, 97) }
```


If only the border color should be changed use the property `border-color`.

```
.border{ border-color:rgb(137, 111, 97) }
```

If you want to add a box shadow in that color use:

Here you see how a box with a 4 pixel `rgb(137, 111, 97)` colored shadow looks like.

```
.boxshadow{ -moz-box-shadow:4px 4px 4px 4px rgb(137, 111, 97); -webkit-box-shadow:4px 4px 4px 4px rgb(137, 111, 97); box-shadow:4px 4px 4px 4px rgb(137, 111, 97) }
```

Background

The CSS property to change the background color of an element to HunterLab 41.8931, 4.0582, 9.8797 is called "background". The background property can be set on classes, ids or directly on the HTML element.

```
.background, #background, body{  
background: rgb(137, 111, 97) }
```

If only the background color should be changed can be used:

```
.background{ background-color: rgb(137,  
111, 97) }
```

This example shows the color as background, it is applied via the CSS property "background".

To optimize and compress your CSS code, you can use our [online CSS compressor and optimizer](#) based on csstidy. If you want to create a linear or radial gradient as background or border, check our [CSS Gradient Generator](#).

Hey! You found this booklet interesting? Support Converting Colors with the new Membership Option!

The pro membership hides all ads, plus gives you double the colors in the color bucket, and more awesome pro features!

[Learn more, Memberships starting at \\$2.50/m!](#)

**Follow me
on Twitter!**

@ConvertingColor