

Converting Colors

HunterLab(41.9453, 6.0081,
13.4830)

Have a look what the booklet for
HunterLab(41.9453, 6.0081,
13.4830) contains.

HunterLab(41.8789, 6.2033, 13.4498)	3
<i>Conversions</i>	4
<i>Details</i>	6
<i>Harmonies</i>	12
<i>Previews</i>	24
<i>Color Blindness Simulation</i>	28
<i>CSS Examples</i>	31

Color

**HunterLab(41.8789, 6.2033,
13.4498)**

Conversions

Conversions Part 1

Format	Color
Hex	906D56
RGB	144, 109, 86
RGB Percent	56%, 43%, 34%
CMY	0.4353, 0.5725, 0.6627
CMYK	0.00, 0.24, 0.40, 0.44
HSL	24°, 25%, 45%
HSV	24°, 40%, 56%
XYZ	18.6499, 17.5384, 11.2064
YIQ	116.8430, 28.2430, 0.2670

Conversions

Conversions Part 2

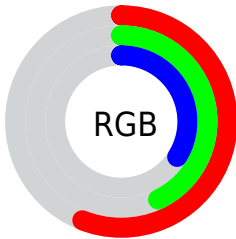
Format	Color
R_{YB}	144, 124, 86
Decimal	9465174
CIE Lab	48.93, 10.67, 18.22
CIE LCh	49, 21.117, 59.657
Yxy	17.5393, 0.3935, 0.3701
Android (android.graphics.Color)	4287655254 (0xFF906D56)
YUV	116.8430, -15.2056, 23.8167
Hunter-Lab	41.8789, 6.2033, 13.4498

Details

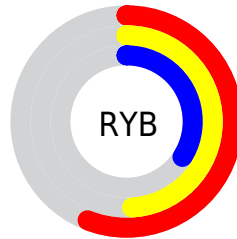
The HunterLab color $41.8789, 6.2033, 13.4498$ is a dark color, and the websafe version is hex 996666 . A complement of this color would be $42.0311, -6.8410, -11.4404$, and the grayscale version is $42.1661, -2.2499, 2.2910$.

A 20% lighter version of the original color is $62.7769, 5.9862, 16.7889$, and $24.0125, 6.0394, 9.9454$ is the 20% darker color. If you saturate the color by 10%, you get $39.4548, 8.9765, 15.3582$, and if you desaturate by 10%, it is $44.4317, 3.6515, 11.2180$.

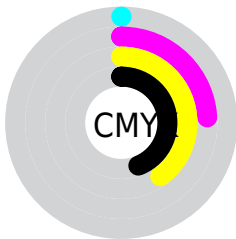
Distribution



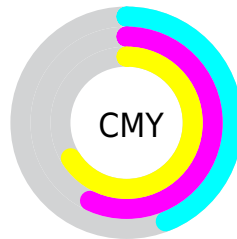
- Red (56%)
- Green (43%)
- Blue (34%)



- Red (56%)
- Yellow (49%)
- Blue (34%)



- Cyan (0%)
- Magenta (24%)
- Yellow (40%)
- Black (44%)



- Cyan (44%)
- Magenta (57%)
- Yellow (66%)

Brightness & Saturation Gradients

These gradients show how the HunterLab color 41.8789, 6.2033, 13.4498 changes by changing the brightness by 10 percent. The first figure shows a shift by +10% for each color and the second figure -10%.

Similar to the brightness gradients but the following saturation gradients show a change of the HunterLab color 41.8789, 6.2033, 13.4498 by changing the saturation by 10% instead.

■ 41.8789, 6.2033,
13.4498

■ 41.8789, 6.2033,
13.4498

154.3571, 4.5074,
27.4375

■ 32.5879, 6.0742,
11.7312

■ 62.6503, 6.2194,
16.7095

■ 24.1075, 5.8502,
9.9145

■ 74.0346, 6.1281,
18.2831

■ 16.5256, 5.5089,
7.9491

■ 86.0355, 5.9788,
19.8338

■ 9.9646, 5.0187,
6.9752

■ 98.6227, 5.7763,
21.3685

0.0000, INF, NaN

0.0000, NaN, NaN

■ 111.7702, 5.5249,
22.8926

0.0000, NaN, NaN

125.4549, 5.2277,

0.0000, NaN, NaN

24.4101

0.0000, NaN, NaN

139.6566, 4.8877,
25.9242

■ 41.8789, 6.2033,
13.4498

■ 41.8789, 6.2033,
13.4498

■ 39.4548, 8.9765,
15.3582

■ 44.4317, 3.6515,
11.2180

■ 37.1704, 11.9792,
16.8975

■ 47.0977, 1.3165,
8.7015

■ 35.0416, 15.2006,
18.0239

■ 49.8670, -0.8176,
5.9367

■ 33.0845, 18.6147,
18.6982

■ 52.7298, -2.7663,
2.9547

■ 31.3148, 22.1713,
18.8975

■ 55.6777, -4.5459,
-0.2181

■ 29.7768, 25.6420,
18.7972

■ 58.7034, -6.1721,
-3.5592

■ 61.8003, -7.6596,
-7.0499

■ 64.9629, -9.0220,
-10.6742

■ 68.1862, -10.2716,
-14.4186

Harmonies

Analogous

The Analogous color harmony consists of three colors that are next to each other on the color wheel.



41.8799, 12.6757, 9.1652



41.8789, 6.2033, 13.4498



41.8799, -2.1404, 14.8743

Triad

The Triadic color harmony groups three colors that are evenly spaced from another and form a triangle on the color wheel.



41.8799, 6.2016, 13.4504



41.8799, -17.1366, 2.3712



41.8799, 6.0218, -13.3139

Complementary

The Complementary color scheme is a pair of colors which are on the opposite of each other on the color wheel.



41.8789, 6.2033, 13.4498



42.0311, -6.8410, -11.4404

Split Complementary

Split-complementary colors differ from the complementary color scheme. The scheme consists of three colors, the original color and two neighbors of the complement color.



41.8799, -2.3332, -16.0865



41.8789, 6.2033, 13.4498



41.8799, -15.3167, -6.0190

Square

The Square scheme is like the rectangle color scheme, but the four colors are evenly spaced on the color wheel.



41.8799, 6.2016, 13.4504



41.8799, -15.2325, 9.2954



41.8799, -10.0559, -13.1898



41.8799, 12.5663, -6.2091

Rectangle

The Rectangle color scheme consists of four colors that form a rectangle on the color wheel.



41.8789, 6.2033, 13.4498



41.8799, -7.5107, 14.2796



41.8799, -10.0559, -13.1898



41.8799, 3.3116, -14.8389

Sweetspot

The Sweet Spot groups the original color and five complimentary colors.



41.8799, 6.2016, 13.4504



65.4925, -0.5479, 8.6314



37.3957, 22.0415, -5.6435



31.1622, -0.1125, 4.3361



85.4018, -4.5568, 4.6400



33.5864, -1.7921, 1.8248

Same Dimension

The Same Dimension uses a secret algorithm to generate beautiful new colors.



41.8799, 6.2016, 13.4504



52.8050, 11.4280, 20.0955



49.5570, -6.9055, 19.8824



23.9857, -0.4979, 2.6852



27.8653, 23.7274, 17.5858



3.3945, 0.8267, 2.1062

Inverse Universe

The Inverse Universe completely reimagines the original color for something new.



42.0311, -6.8410, -11.4404



53.0308, -9.3024, -19.5165



34.3221, 6.3282, -24.3200



24.0044, -1.9778, -0.1340



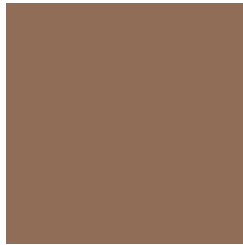
27.7853, -1.2960, -31.9314



3.4201, -1.1828, -1.7216

Previews

White Background



This preview shows how the HunterLab color 41.8789, 6.2033, 13.4498 looks on a white background.

Color Contrast Check

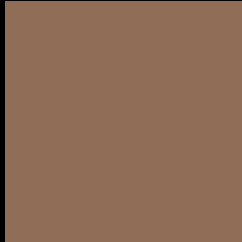
Large Text (above 18pt) WCAG AA ✓ Pass

Any Text WCAG AA ✓ Pass

Large Text (above 18pt) WCAG AAA ✓ Pass

Any Text WCAG AAA × Fail

Black Background



This preview shows how the HunterLab color 41.8789, 6.2033, 13.4498 looks on a black background.

Color Contrast Check

Large Text (above 18pt) WCAG AA ✓ Pass

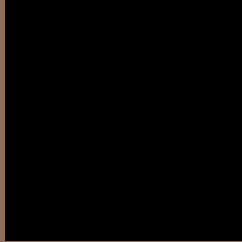
Any Text WCAG AA ✓ Pass

Large Text (above 18pt) WCAG AAA ✓ Pass

Any Text WCAG AAA × Fail

If you want to check with other color combinations, try the [Color Contrast Checker](#).

HunterLab 41.8789, 6.2033, 13.4498 Background



This preview shows how black text looks on a background with the HunterLab color 41.8789, 6.2033, 13.4498.



This preview shows how white text looks on a background with the HunterLab color 41.8789, 6.2033,

Color Blindness Simulation

Color vision deficiency is a very complex topic, and I could not describe the different causes any better than Wikipedia does, so if you want to learn more, you should check out their [article about color blindness](#).

Dichromacy



Original Color

41.8789, 6.2033, 13.4498

Protanopia

41.8296, -3.3853, 12.3196

Deuteranopia

42.0089, 2.6074, 13.8016



Tritanopia

41.8311, 12.4152, 3.8503

Trichromacy



Original Color

41.8789, 6.2033, 13.4498

Protanomaly

41.6415, 0.1137, 12.5158

Deuteranomaly

41.9526, 3.7623, 13.7708

Tritanomaly

41.7113, 10.2667, 7.6422

Monochromacy



Original Color

41.8789, 6.2033, 13.4498

Achromatopsia

42.1768, -2.2504, 2.2915

Achromatomaly

41.9372, 0.5483, 6.5732

CSS Examples

Text

The CSS property to change the color of the text to HunterLab 41.8789, 6.2033, 13.4498 is called "color". The color property can be set on classes, ids or directly on the HTML element.

This example shows how text in the color `rgb(144, 109, 86)` looks like.

```
.text, #text, p{  
    color:rgb(144, 109, 86)  
}
```

If you want to add a text shadow in that color use the text-shadow property, you can generate a text shadow directly with our [CSS Text Shadow Generator](#).

Here you see how black text with a 4 pixel rgb(144, 109, 86) colored shadow looks like.

```
.shadow{ text-shadow: 4px 4px 2px rgb(144, 109, 86) }
```

Border

The CSS property to change the border of an element to HunterLab 41.8789, 6.2033, 13.4498 is called "border". The border property can be set on classes, ids or directly on the HTML element.

This example shows the color as border, it can be applied via the CSS property "border" or "border-color".

```
.border, #border, table{ border:4px solid rgb(144, 109, 86) }
```


If only the border color should be changed use the property `border-color`.

```
.border{ border-color:rgb(144, 109, 86) }
```

If you want to add a box shadow in that color use:

Here you see how a box with a 4 pixel `rgb(144, 109, 86)` colored shadow looks like.

```
.boxshadow{ -moz-box-shadow:4px 4px 4px  
4px rgb(144, 109, 86); -webkit-box-  
shadow:4px 4px 4px 4px rgb(144, 109, 86);  
box-shadow:4px 4px 4px 4px rgb(144, 109,  
86) }
```

Background

The CSS property to change the background color of an element to HunterLab 41.8789, 6.2033, 13.4498 is called "background". The background property can be set on classes, ids or directly on the HTML element.

```
.background, #background, body{  
background: rgb(144, 109, 86) }
```

If only the background color should be changed can be used:

```
.background{ background-color: rgb(144,  
109, 86) }
```

This example shows the color as background, it is applied via the CSS property "background".

To optimize and compress your CSS code, you can use our [online CSS compressor and optimizer](#) based on csstidy. If you want to create a linear or radial gradient as background or border, check our [CSS Gradient Generator](#).

Hey! You found this booklet interesting? Support Converting Colors with the new Membership Option!

The pro membership hides all ads, plus gives you double the colors in the color bucket, and more awesome pro features!

[Learn more, Memberships starting at \\$2.50/m!](#)

**Follow me
on Twitter!**

@ConvertingColor