

Converting Colors

HunterLab(42.0609, 18.2185,
11.6387)

Have a look what the booklet for
HunterLab(42.0609, 18.2185,
11.6387) contains.

HunterLab(42.0609, 18.2185, 11.6387)	3
<i>Conversions</i>	4
<i>Details</i>	6
<i>Harmonies</i>	12
<i>Previews</i>	24
<i>Color Blindness Simulation</i>	28
<i>CSS Examples</i>	31

Color

**HunterLab(42.0609, 18.2185,
11.6387)**

Conversions

Conversions Part 1

Format	Color
Hex	A3645D
RGB	163, 100, 93
RGB Percent	64%, 39%, 36%
CMY	0.3608, 0.6078, 0.6353
CMYK	0.00, 0.39, 0.43, 0.36
HSL	6°, 28%, 50%
HSV	6°, 43%, 64%
XYZ	21.6372, 17.6912, 12.6303
YIQ	118.0390, 39.7950, 11.1790

Conversions

Conversions Part 2

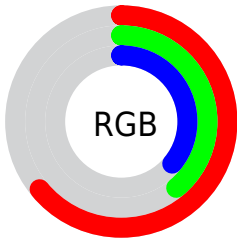
Format	Color
R_{YB}	163, 101, 93
Decimal	10708061
CIE _{Lab}	49.12, 24.61, 14.74
CIE _{LCh}	49, 28.684, 30.914
Yxy	17.6921, 0.4164, 0.3405
Android (android.graphics.Color)	4288898141 (0xFFA3645D)
YUV	118.0390, -12.3442, 39.4308
Hunter-Lab	42.0609, 18.2185, 11.6387

Details

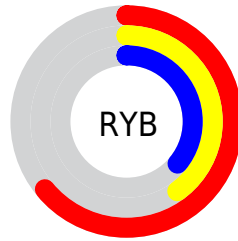
The HunterLab color **42.0609, 18.2185, 11.6387** is a dark color, and the websafe version is hex **996666**. A complement of this color would be **53.6165, -17.2139, -5.5801**, and the grayscale version is **42.6148, -2.2738, 2.3153**.

A 20% lighter version of the original color is **62.9724, 19.3421, 14.6750**, and **24.3155, 16.5265, 8.7149** is the 20% darker color. If you saturate the color by 10%, you get **38.5591, 23.7559, 13.4648**, and if you desaturate by 10%, it is **45.9177, 12.8419, 9.7278**.

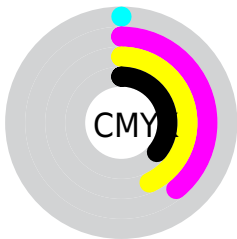
Distribution



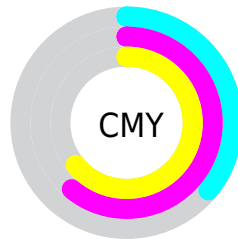
- Red (64%)
- Green (39%)
- Blue (36%)



- Red (64%)
- Yellow (40%)
- Blue (36%)



- Cyan (0%)
- Magenta (39%)
- Yellow (43%)
- Black (36%)



- Cyan (36%)
- Magenta (61%)
- Yellow (64%)

Brightness & Saturation Gradients

These gradients show how the HunterLab color 42.0609, 18.2185, 11.6387 changes by changing the brightness by 10 percent. The first figure shows a shift by +10% for each color and the second figure -10%.

Similar to the brightness gradients but the following saturation gradients show a change of the HunterLab color 42.0609, 18.2185, 11.6387 by changing the saturation by 10% instead.

■ 42.0609, 18.2185,
11.6387

■ 42.0609, 18.2185,
11.6387

154.6382, 21.7882,
24.0264

■ 32.7554, 17.3690,
10.1731

■ 62.8585, 19.5729,
14.4590

■ 24.2590, 16.3880,
8.6408

■ 74.2547, 20.1071,
15.8375

■ 16.6592, 15.2561,
7.0028

■ 86.2669, 20.5579,
17.2054

■ 10.0775, 13.9693,
6.6476

■ 98.8648, 20.9330,
18.5678

0.0000, INF, NaN

0.0000, NaN, NaN

112.0226, 21.2387,
19.9286

0.0000, NaN, NaN

125.7172, 21.4802,

0.0000, NaN, NaN

21.2905

0.0000, NaN, NaN

139.9285, 21.6621,
22.6559

■ 42.0609, 18.2185,
11.6387

■ 42.0609, 18.2185,
11.6387

■ 38.5591, 23.7559,
13.4648

■ 45.9177, 12.8419,
9.7278

■ 35.4699, 29.3295,
15.1308

■ 50.0735, 7.6927,
7.7776

■ 32.8591, 34.7086,
16.5377

■ 54.4855, 2.7840,
5.8171

■ 30.7865, 39.5631,
17.5713

■ 59.1175, -1.8933,
3.8616

■ 29.2919, 43.5088,
18.1392

■ 63.9404, -6.3597,
1.9186

■ 28.5768, 45.5230,
18.4058

■ 68.9304, -10.6399,
-0.0095

■ 74.0684, -14.7587,
-1.9228

■ 79.3386, -18.7393,
-3.8228

■ 84.7280, -22.6023,
-5.7114

Harmonies

Analogous

The Analogous color harmony consists of three colors that are next to each other on the color wheel.



42.0619, 21.9389, 2.6202



42.0609, 18.2185, 11.6387



42.0619, 8.9254, 16.7181

Triad

The Triadic color harmony groups three colors that are evenly spaced from another and form a triangle on the color wheel.



42.0619, 18.2163, 11.6394



42.0619, -19.7083, 11.2019



42.0619, -1.8970, -24.2868

Complementary

The Complementary color scheme is a pair of colors which are on the opposite of each other on the color wheel.



42.0609, 18.2185, 11.6387



53.6165, -17.2139, -5.5801

Split Complementary

Split-complementary colors differ from the complementary color scheme. The scheme consists of three colors, the original color and two neighbors of the complement color.



42.0619, -12.3620, -20.2595



42.0609, 18.2185, 11.6387



42.0619, -21.9620, 1.9562

Square

The Square scheme is like the rectangle color scheme, but the four colors are evenly spaced on the color wheel.



42.0619, 18.2163, 11.6394



42.0619, -12.9062, 16.5168



42.0619, -19.4184, -9.8669



42.0619, 9.5932, -19.7644

Rectangle

The Rectangle color scheme consists of four colors that form a rectangle on the color wheel.



42.0609, 18.2185, 11.6387



42.0619, 1.2642, 18.0914



42.0619, -19.4184, -9.8669



42.0619, -5.6459, -23.8805

Sweetspot

The Sweet Spot groups the original color and five complimentary colors.



42.0619, 18.2163, 11.6394



72.7357, 3.9161, 7.8626



42.4449, 30.9395, -17.2391



33.8649, 2.5053, 3.9902



90.9709, -4.8540, 4.9426



38.3822, -2.0480, 2.0854

Same Dimension

The Same Dimension uses a secret algorithm to generate beautiful new colors.



42.0619, 18.2163, 11.6394



51.5929, 31.8066, 18.0241



50.8969, 1.2174, 19.3198



26.8230, 0.4959, 2.4342



25.2596, 39.9117, 16.2636



4.0734, 4.5298, 2.5893

Inverse Universe

The Inverse Universe completely reimagines the original color for something new.



53.6165, -17.2139, -5.5801



70.1011, -25.7249, -9.7401



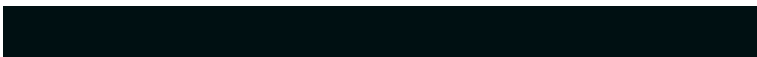
43.1815, -1.3154, -20.9911



28.0884, -3.3020, 0.5681



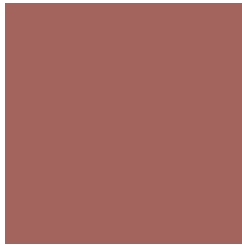
42.7037, -19.4375, -11.4159



6.4472, -3.1373, -1.2859

Previews

White Background



This preview shows how the HunterLab color 42.0609, 18.2185, 11.6387 looks on a white background.

Color Contrast Check

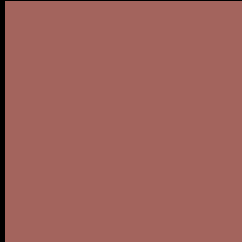
Large Text (above 18pt) WCAG AA ✓ Pass

Any Text WCAG AA ✓ Pass

Large Text (above 18pt) WCAG AAA ✓ Pass

Any Text WCAG AAA × Fail

Black Background



This preview shows how the HunterLab color 42.0609, 18.2185, 11.6387 looks on a black background.

Color Contrast Check

Large Text (above 18pt) WCAG AA ✓ Pass

Any Text WCAG AA ✓ Pass

Large Text (above 18pt) WCAG AAA ✓ Pass

Any Text WCAG AAA × Fail

If you want to check with other color combinations, try the [Color Contrast Checker](#).

HunterLab 42.0609, 18.2185, 11.6387 Background



This preview shows how black text looks on a background with the HunterLab color 42.0609, 18.2185, 11.6387.

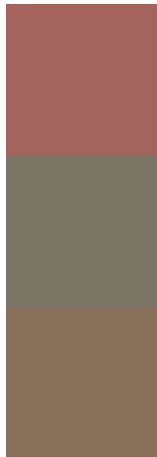


This preview shows how white text looks on a background with the HunterLab color 42.0609, 18.2185,

Color Blindness Simulation

Color vision deficiency is a very complex topic, and I could not describe the different causes any better than Wikipedia does, so if you want to learn more, you should check out their [article about color blindness](#).

Dichromacy



Original Color

42.0609, 18.2185, 11.6387

Protanopia

42.2766, -2.7192, 8.7364

Deuteranopia

42.0262, 2.9022, 11.9839



Tritanopia

42.0093, 20.9290, 7.3901

Trichromacy



Original Color

42.0609, 18.2185, 11.6387

Protanomaly

42.0167, 4.5136, 9.6638

Deuteranomaly

41.9629, 8.0176, 11.6916

Tritanomaly

42.1376, 19.9649, 8.9909

Monochromacy



Original Color

42.0609, 18.2185, 11.6387

Achromatopsia

42.5634, -2.2711, 2.3126

Achromatomaly

41.8824, 4.5981, 5.4069

CSS Examples

Text

The CSS property to change the color of the text to HunterLab 42.0609, 18.2185, 11.6387 is called "color". The color property can be set on classes, ids or directly on the HTML element.

This example shows how text in the color `rgb(163, 100, 93)` looks like.

```
.text, #text, p{  
    color:rgb(163, 100, 93)  
}
```

If you want to add a text shadow in that color use the text-shadow property, you can generate a text shadow directly with our [CSS Text Shadow Generator](#).

Here you see how black text with a 4 pixel rgb(163, 100, 93) colored shadow looks like.

```
.shadow{ text-shadow: 4px 4px 2px rgb(163, 100, 93) }
```

Border

The CSS property to change the border of an element to HunterLab 42.0609, 18.2185, 11.6387 is called "border". The border property can be set on classes, ids or directly on the HTML element.

This example shows the color as border, it can be applied via the CSS property "border" or "border-color".

```
.border, #border, table{ border:4px solid rgb(163, 100, 93) }
```


If only the border color should be changed use the property border-color.

```
.border{ border-color:rgb(163, 100, 93) }
```

If you want to add a box shadow in that color use:

Here you see how a box with a 4 pixel rgb(163, 100, 93) colored shadow looks like.

```
.boxshadow{ -moz-box-shadow:4px 4px 4px  
4px rgb(163, 100, 93); -webkit-box-  
shadow:4px 4px 4px 4px rgb(163, 100, 93);  
box-shadow:4px 4px 4px 4px rgb(163, 100,  
93) }
```

Background

The CSS property to change the background color of an element to HunterLab 42.0609, 18.2185, 11.6387 is called "background". The background property can be set on classes, ids or directly on the HTML element.

```
.background, #background, body{  
background: rgb(163, 100, 93) }
```

If only the background color should be changed can be used:

```
.background{ background-color: rgb(163,  
100, 93) }
```

This example shows the color as background, it is applied via the CSS property "background".

To optimize and compress your CSS code, you can use our [online CSS compressor and optimizer](#) based on csstidy. If you want to create a linear or radial gradient as background or border, check our [CSS Gradient Generator](#).

Hey! You found this booklet interesting? Support Converting Colors with the new Membership Option!

The pro membership hides all ads, plus gives you double the colors in the color bucket, and more awesome pro features!

[Learn more, Memberships starting at \\$2.50/m!](#)

**Follow me
on Twitter!**

@ConvertingColor