

# Converting Colors

HunterLab(42.4213, 61.4434,  
2.8227)

Have a look what the booklet for  
HunterLab(42.4213, 61.4434,  
2.8227) contains.

<b>HunterLab(42.4213, 61.4434, 2.8227)</b> .....	3
<b><i>Conversions</i></b> .....	4
<b><i>Details</i></b> .....	6
<b><i>Harmonies</i></b> .....	12
<b><i>Previews</i></b> .....	24
<b><i>Color Blindness Simulation</i></b> .....	28
<b><i>CSS Examples</i></b> .....	31

# Color

**HunterLab(42.4213, 61.4434,  
2.8227)**

# Conversions

## Conversions Part 1

<b>Format</b>	<b>Color</b>
Hex	D63377
RGB	214, 51, 119
RGB Percent	84%, 20%, 47%
CMY	0.1608, 0.8000, 0.5333
CMYK	0.00, 0.76, 0.44, 0.16
HSL	335°, 67%, 52%
HSV	335°, 76%, 84%
XYZ	32.2451, 17.9957, 19.2268
YIQ	107.4890, 75.3200, 55.7040

# Conversions

## Conversions Part 2

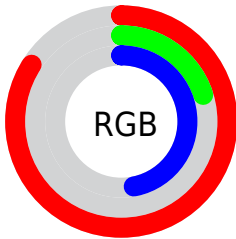
<b>Format</b>	<b>Color</b>
<b>R<sub>YB</sub></b>	214, 51, 119
Decimal	14037879
CIE <sub>Lab</sub>	49.49, 66.43, 0.71
CIE <sub>LCh</sub>	49, 66.433, 0.614
Yxy	17.9967, 0.4642, 0.2591
Android (android.graphics.Color)	4292227959 (0xFFD63377)
YUV	107.4890, 5.6749, 93.4101
Hunter-Lab	42.4213, 61.4434, 2.8227

# Details

The HunterLab color **42.4213, 61.4434, 2.8227** is a dark color, and the websafe version is hex **CC0066**. The color can be described as dark muted rose. A complement of this color would be **71.3251, -48.2350, 20.4966**, and the grayscale version is **38.4913, -2.0538, 2.0913**.

A 20% lighter version of the original color is **59.8236, 57.5808, -0.3134**, and **27.0647, 48.0299, 4.4588** is the 20% darker color. If you saturate the color by 10%, you get **40.3196, 65.8625, 5.7345**, and if you desaturate by 10%, it is **45.4266, 54.9067, 0.7070**.

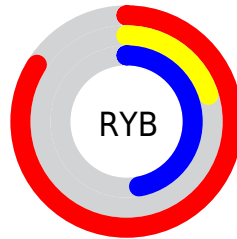
# Distribution



Red (84%)

Green (20%)

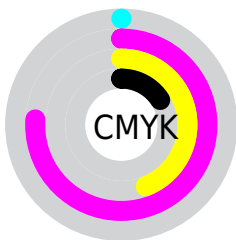
Blue (47%)



Red (84%)

Yellow (20%)

Blue (47%)

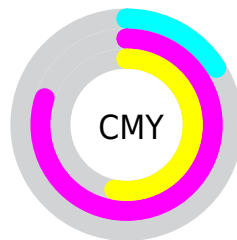


Cyan (0%)

Magenta (76%)

Yellow (44%)

Black (16%)



Cyan (16%)

Magenta (80%)

Yellow (53%)

# Brightness & Saturation Gradients

These gradients show how the HunterLab color 42.4213, 61.4434, 2.8227 changes by changing the brightness by 10 percent. The first figure shows a shift by +10% for each color and the second figure -10%.

Similar to the brightness gradients but the following saturation gradients show a change of the HunterLab color 42.4213, 61.4434, 2.8227 by changing the saturation by 10% instead.



42.4213, 61.4434,  
2.8227

42.4213, 61.4434,  
2.8227

155.1942, 78.0187,  
9.2436

33.0872, 59.1958,  
2.2743

63.2706, 65.7675,  
4.0329

24.5593, 57.0022,  
1.7646

74.6903, 67.7997,  
4.6883

16.9243, 55.0939,  
1.2981

86.7247, 69.7345,  
5.3755

10.3020, 54.1771,  
0.8787

99.3439, 71.5724,  
6.0929

0.0000, INF, NaN

0.0000, INF, NaN

112.5220, 73.3160,  
6.8395

0.0000, NaN, NaN

126.2362, 74.9688,

0.0000, NaN, NaN

7.6141

0.0000, NaN, NaN

140.4663, 76.5350,  
8.4158

■ 42.4213, 61.4434,  
2.8227

■ 42.4213, 61.4434,  
2.8227

■ 40.3196, 65.8625,  
5.7345

■ 45.4266, 54.9067,  
0.7070

■ 39.0941, 67.8475,  
9.1979

■ 49.2748, 46.8882,  
-0.5391

■ 38.7581, 68.2469,  
10.5291

■ 53.8706, 38.0102,  
-0.9619

■ 59.1081, 28.7515,  
-0.6734

■ 64.8884, 19.4185,  
0.1992

■ 71.1262, 10.1800,  
1.5390

■ 77.7515, 1.1139,  
3.2499

■ 84.7079, -7.7554,  
5.2560

■ 91.9500, -16.4318,  
7.4994

# Harmonies

## Analogous

The Analogous color harmony consists of three colors that are next to each other on the color wheel.



42.4225, 51.7092, -28.9160



42.4213, 61.4434, 2.8227



42.4225, 50.9202, 20.2865

# Triad

The Triadic color harmony groups three colors that are evenly spaced from another and form a triangle on the color wheel.



42.4225, 61.4395, 2.8239



42.4225, -25.1654, 26.4009



42.4225, -24.4312, -65.0898

# Complementary

The Complementary color scheme is a pair of colors which are on the opposite of each other on the color wheel.



42.4213, 61.4434, 2.8227



71.3251, -48.2350, 20.4966

# Split Complementary

Split-complementary colors differ from the complementary color scheme. The scheme consists of three colors, the original color and two neighbors of the complement color.



42.4225, -37.7379, -30.4186



42.4213, 61.4434, 2.8227



42.4225, -38.0830, 19.8395

# Square

The Square scheme is like the rectangle color scheme, but the four colors are evenly spaced on the color wheel.



42.4225, 61.4395, 2.8239



42.4225, -2.8090, 27.7847



42.4225, -42.0576, 1.7879



42.4225, -1.7200, -80.0373



# Rectangle

The Rectangle color scheme consists of four colors that form a rectangle on the color wheel.



42.4213, 61.4434, 2.8227



42.4225, 35.0321, 25.2556



42.4225, -42.0576, 1.7879



42.4225, -29.9340, -54.6133

# Sweetspot

The Sweet Spot groups the original color and five complimentary colors.



42.4225, 61.4395, 2.8239



81.3072, 20.3582, 0.6688



36.1892, 58.5688, -80.9029



36.3666, 11.3315, 0.0676

0.0000, NaN, NaN



46.2646, -2.4686, 2.5136



# Same Dimension

The Same Dimension uses a secret algorithm to generate beautiful new colors.



42.4225, 61.4395, 2.8239



48.1879, 82.0669, 9.3656



42.3877, 52.3459, 22.6528



35.3637, 1.8943, 1.2435



30.1653, 53.1786, 7.7130



7.5175, 13.4586, 0.3264



# Inverse Universe

The Inverse Universe completely reimagines the original color for something new.



42.4225, 61.4395, 2.8239



48.1879, 82.0669, 9.3656



69.5228, -32.0824, -11.9764



35.3637, 1.8943, 1.2435



30.1653, 53.1786, 7.7130

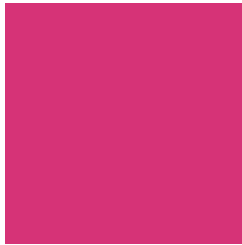


7.5175, 13.4586, 0.3264



# Previews

## White Background



This preview shows how the HunterLab color 42.4213, 61.4434, 2.8227 looks on a white background.

## Color Contrast Check

Large Text (above 18pt) WCAG AA ✓ Pass

Any Text WCAG AA ✓ Pass

Large Text (above 18pt) WCAG AAA ✓ Pass

Any Text WCAG AAA × Fail



# Black Background



This preview shows how the HunterLab color 42.4213, 61.4434, 2.8227 looks on a black background.

## Color Contrast Check

Large Text (above 18pt) WCAG AA ✓ Pass

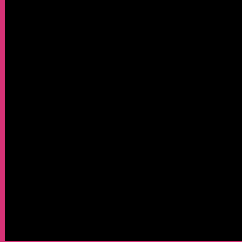
Any Text WCAG AA ✓ Pass

Large Text (above 18pt) WCAG AAA ✓ Pass

Any Text WCAG AAA × Fail

If you want to check with other color combinations, try the [Color Contrast Checker](#).

## HunterLab 42.4213, 61.4434, 2.8227 Background



This preview shows how black text looks on a background with the HunterLab color 42.4213, 61.4434, 2.8227.



This preview shows how white text looks on a background with the HunterLab color 42.4213, 61.4434,



# Color Blindness Simulation

Color vision deficiency is a very complex topic, and I could not describe the different causes any better than Wikipedia does, so if you want to learn more, you should check out their [article about color blindness](#).

## Dichromacy



### Original Color

42.4213, 61.4434, 2.8227

### Protanopia

42.7984, 2.6626, -18.3937

### Deuteranopia

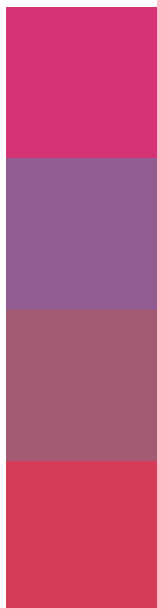
42.5298, 2.8082, 5.2904



## Tritanopia

42.4816, 50.8617, 19.4347

# Trichromacy



## Original Color

42.4213, 61.4434, 2.8227

## Protanomaly

39.9416, 23.0689, -14.1515

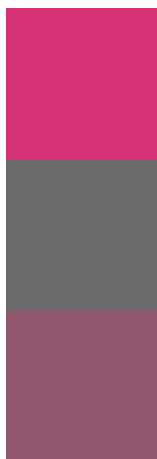
## Deuteranomaly

40.4703, 24.7937, 2.0491

## Tritanomaly

42.3283, 54.4923, 14.4065

# Monochromacy



## Original Color

42.4213, 61.4434, 2.8227

## Achromatopsia

38.3441, -2.0459, 2.0833

## Achromatomaly

37.5168, 20.6130, -0.2884

# CSS Examples

## Text

The CSS property to change the color of the text to HunterLab 42.4213, 61.4434, 2.8227 is called "color". The color property can be set on classes, ids or directly on the HTML element.

This example shows how text in the color `rgb(214, 51, 119)` looks like.

```
.text, #text, p{  
    color:rgb(214, 51, 119)  
}
```

If you want to add a text shadow in that color use the text-shadow property, you can generate a text shadow directly with our [CSS Text Shadow Generator](#).

Here you see how black text with a 4 pixel rgb(214, 51, 119) colored shadow looks like.

```
.shadow{ text-shadow: 4px 4px 2px rgb(214, 51, 119) }
```

## Border

The CSS property to change the border of an element to HunterLab 42.4213, 61.4434, 2.8227 is called "border". The border property can be set on classes, ids or directly on the HTML element.

This example shows the color as border, it can be applied via the CSS property "border" or "border-color".

```
.border, #border, table{ border:4px solid rgb(214, 51, 119) }
```



If only the border color should be changed use the property `border-color`.

```
.border{ border-color:rgb(214, 51, 119) }
```

If you want to add a box shadow in that color use:

Here you see how a box with a 4 pixel `rgb(214, 51, 119)` colored shadow looks like.

```
.boxshadow{ -moz-box-shadow:4px 4px 4px  
4px rgb(214, 51, 119); -webkit-box-  
shadow:4px 4px 4px 4px rgb(214, 51, 119);  
box-shadow:4px 4px 4px 4px rgb(214, 51,  
119) }
```

# Background

The CSS property to change the background color of an element to HunterLab 42.4213, 61.4434, 2.8227 is called "background". The background property can be set on classes, ids or directly on the HTML element.

```
.background, #background, body{  
background: rgb(214, 51, 119) }
```

If only the background color should be changed can be used:

```
.background{ background-color: rgb(214, 51,  
119) }
```

This example shows the color as background, it is applied via the CSS property "background".

To optimize and compress your CSS code, you can use our [online CSS compressor and optimizer](#) based on csstidy. If you want to create a linear or radial gradient as background or border, check our [CSS Gradient Generator](#).

Hey! You found this booklet interesting? Support Converting Colors with the new Membership Option!

The pro membership hides all ads, plus gives you double the colors in the color bucket, and more awesome pro features!

**[Learn more, Memberships starting at \\$2.50/m!](#)**

**Follow me  
on Twitter!**

@ConvertingColor