

Converting Colors

HunterLab(42.5533, 16.5332,
9.3557)

Have a look what the booklet for
HunterLab(42.5533, 16.5332,
9.3557) contains.

HunterLab(42.5602, 16.5159, 9.3629)	3
<i>Conversions</i>	4
<i>Details</i>	6
<i>Harmonies</i>	12
<i>Previews</i>	24
<i>Color Blindness Simulation</i>	28
<i>CSS Examples</i>	31

Color

**HunterLab(42.5602, 16.5159,
9.3629)**

Conversions

Conversions Part 1

Format	Color
Hex	A06765
RGB	160, 103, 101
RGB Percent	63%, 40%, 40%
CMY	0.3725, 0.5961, 0.6039
CMYK	0.00, 0.36, 0.37, 0.37
HSL	2°, 24%, 51%
HSV	2°, 37%, 63%
XYZ	21.6965, 18.1137, 14.6647
YIQ	119.8150, 34.6140, 11.4620

Conversions

Conversions Part 2

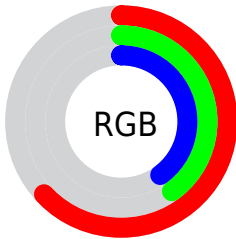
Format	Color
R_{YB}	160, 103, 101
Decimal	10512229
CIE _{Lab}	49.63, 22.67, 10.64
CIE _{LCh}	50, 25.045, 25.151
Yxy	18.1146, 0.3983, 0.3325
Android (android.graphics.Color)	4288702309 (0xFFA06765)
YUV	119.8150, -9.2758, 35.2422
Hunter-Lab	42.5602, 16.5159, 9.3629

Details

The HunterLab color **42.5602, 16.5159, 9.3629** is a dark color, and the websafe version is hex **996666**. A complement of this color would be **54.5504, -17.1317, -2.8336**, and the grayscale version is **43.2928, -2.3100, 2.3522**.

A 20% lighter version of the original color is **63.4891, 17.4018, 11.6852**, and **24.6229, 14.7299, 7.0267** is the 20% darker color. If you saturate the color by 10%, you get **38.7749, 22.3249, 11.1420**, and if you desaturate by 10%, it is **46.7159, 10.8716, 7.6165**.

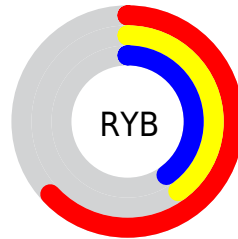
Distribution



Red (63%)

Green (40%)

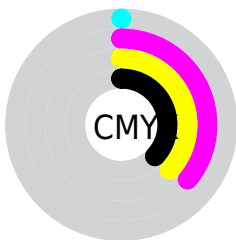
Blue (40%)



Red (63%)

Yellow (40%)

Blue (40%)

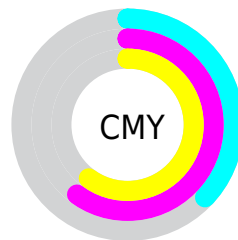


Cyan (0%)

Magenta (36%)

Yellow (37%)

Black (37%)



Cyan (37%)

Magenta (60%)

Yellow (60%)

Brightness & Saturation Gradients

These gradients show how the HunterLab color 42.5602, 16.5159, 9.3629 changes by changing the brightness by 10 percent. The first figure shows a shift by +10% for each color and the second figure -10%.

Similar to the brightness gradients but the following saturation gradients show a change of the HunterLab color 42.5602, 16.5159, 9.3629 by changing the saturation by 10% instead.

■ 42.5602, 16.5159,
9.3629

■ 42.5602, 16.5159,
9.3629

155.4079, 19.3437,
19.9311

■ 33.2149, 15.7664,
8.1834

■ 63.4291, 17.6830,
11.6857

■ 24.6750, 14.8889,
6.9730

■ 74.8578, 18.1291,
12.8425

■ 17.0265, 13.8620,
5.7071

■ 86.9007, 18.4953,
14.0027

■ 10.3886, 12.6717,
4.8910

■ 99.5281, 18.7889,
15.1691

0.0000, INF, NaN

0.0000, NaN, NaN

112.7140, 19.0158,
16.3438

0.0000, NaN, NaN

126.4357, 19.1812,

0.0000, NaN, NaN

17.5283

0.0000, NaN, NaN

140.6730, 19.2892,
18.7238

■ 42.5602, 16.5159,
9.3629

■ 42.5602, 16.5159,
9.3629

■ 38.7749, 22.3249,
11.1420

■ 46.7159, 10.8716,
7.6165

■ 35.4257, 28.1714,
12.8991

■ 51.1806, 5.4537,
5.9260

■ 32.5897, 33.8071,
14.5456

■ 55.9081, 0.2703,
4.3008

■ 30.3403, 38.8613,
15.9555

■ 60.8602, -4.6922,
2.7403

■ 28.7302, 42.8910,
16.9901

■ 66.0066, -9.4573,
1.2392

■ 27.7622, 45.5203,
17.5971

■ 71.3230, -14.0512,
-0.2091

■ 27.5528, 46.0848,
17.7847

■ 76.7896, -18.4992,
-1.6120

■ 82.3906, -22.8246,
-2.9761

■ 88.1129, -27.0474,
-4.3075

Harmonies

Analogous

The Analogous color harmony consists of three colors that are next to each other on the color wheel.



42.5612, 18.5704, 0.7457



42.5602, 16.5159, 9.3629



42.5612, 9.2485, 14.7333

Triad

The Triadic color harmony groups three colors that are evenly spaced from another and form a triangle on the color wheel.



42.5612, 16.5139, 9.3636



42.5612, -16.8956, 11.4781



42.5612, -3.8821, -20.1639

Complementary

The Complementary color scheme is a pair of colors which are on the opposite of each other on the color wheel.



42.5602, 16.5159, 9.3629



54.5504, -17.1317, -2.8336

Split Complementary

Split-complementary colors differ from the complementary color scheme. The scheme consists of three colors, the original color and two neighbors of the complement color.



42.5612, -12.6863, -15.5382



42.5602, 16.5159, 9.3629



42.5612, -19.7458, 3.8300

Square

The Square scheme is like the rectangle color scheme, but the four colors are evenly spaced on the color wheel.



42.5612, 16.5139, 9.3636



42.5612, -10.1209, 15.7426



42.5612, -18.2783, -6.1888



42.5612, 6.1877, -17.7254

Rectangle

The Rectangle color scheme consists of four colors that form a rectangle on the color wheel.



42.5602, 16.5159, 9.3629



42.5612, 2.7536, 16.4470



42.5612, -18.2783, -6.1888



42.5612, -7.0771, -19.3580

Sweetspot

The Sweet Spot groups the original color and five complimentary colors.



42.5612, 16.5139, 9.3636



72.5321, 3.3559, 6.7343



43.8759, 26.2486, -16.2367



33.5930, 1.9820, 3.2824



89.8524, -4.7943, 4.8819



37.4146, -1.9963, 2.0328

Same Dimension

The Same Dimension uses a secret algorithm to generate beautiful new colors.



42.5612, 16.5139, 9.3636



53.2377, 28.4847, 14.5276



50.0427, 2.1734, 16.2868



25.8466, 0.6959, 2.2081



24.3456, 40.5813, 15.7121



3.3967, 4.9636, 2.1799

Inverse Universe

The Inverse Universe completely reimagines the original color for something new.



54.5504, -17.1317, -2.8336



72.4762, -26.0141, -5.1959



45.6977, -3.7977, -15.0576



27.3328, -3.4077, 0.7162



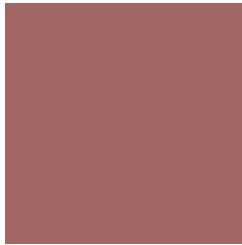
44.8776, -22.7547, -6.9723



6.0896, -3.1494, -0.8129

Previews

White Background



This preview shows how the HunterLab color 42.5602, 16.5159, 9.3629 looks on a white background.

Color Contrast Check

Large Text (above 18pt) WCAG AA ✓ Pass

Any Text WCAG AA ✓ Pass

Large Text (above 18pt) WCAG AAA ✓ Pass

Any Text WCAG AAA × Fail

Black Background



This preview shows how the HunterLab color 42.5602, 16.5159, 9.3629 looks on a black background.

Color Contrast Check

Large Text (above 18pt) WCAG AA ✓ Pass

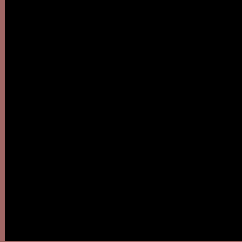
Any Text WCAG AA ✓ Pass

Large Text (above 18pt) WCAG AAA ✓ Pass

Any Text WCAG AAA × Fail

If you want to check with other color combinations, try the [Color Contrast Checker](#).

HunterLab 42.5602, 16.5159, 9.3629 Background



This preview shows how black text looks on a background with the HunterLab color 42.5602, 16.5159, 9.3629.

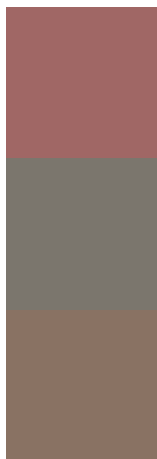


This preview shows how white text looks on a background with the HunterLab color 42.5602, 16.5159, 9.3629.

Color Blindness Simulation

Color vision deficiency is a very complex topic, and I could not describe the different causes any better than Wikipedia does, so if you want to learn more, you should check out their [article about color blindness](#).

Dichromacy



Original Color

42.5602, 16.5159, 9.3629

Protanopia

42.7457, -2.1153, 6.2350

Deuteranopia

42.7245, 2.8830, 9.9959



Tritanopia

42.6426, 18.3439, 6.4811

Trichromacy



Original Color

42.5602, 16.5159, 9.3629

Protanomaly

42.5266, 3.9014, 7.2623

Deuteranomaly

42.5343, 7.6222, 9.5368

Tritanomaly

42.5681, 17.9712, 7.5527

Monochromacy



Original Color

42.5602, 16.5159, 9.3629

Achromatopsia

43.3383, -2.3124, 2.3547

Achromatomaly

42.8693, 4.0480, 4.8798

CSS Examples

Text

The CSS property to change the color of the text to HunterLab 42.5602, 16.5159, 9.3629 is called "color". The color property can be set on classes, ids or directly on the HTML element.

This example shows how text in the color `rgb(160, 103, 101)` looks like.

```
.text, #text, p{  
    color:rgb(160, 103, 101)  
}
```

If you want to add a text shadow in that color use the text-shadow property, you can generate a text shadow directly with our [CSS Text Shadow Generator](#).

Here you see how black text with a 4 pixel rgb(160, 103, 101) colored shadow looks like.

```
.shadow{ text-shadow: 4px 4px 2px rgb(160, 103, 101) }
```

Border

The CSS property to change the border of an element to HunterLab 42.5602, 16.5159, 9.3629 is called "border". The border property can be set on classes, ids or directly on the HTML element.

This example shows the color as border, it can be applied via the CSS property "border" or "border-color".

```
.border, #border, table{ border:4px solid rgb(160, 103, 101) }
```


If only the border color should be changed use the property `border-color`.

```
.border{ border-color:rgb(160, 103, 101) }
```

If you want to add a box shadow in that color use:

Here you see how a box with a 4 pixel `rgb(160, 103, 101)` colored shadow looks like.

```
.boxshadow{ -moz-box-shadow:4px 4px 4px  
4px rgb(160, 103, 101); -webkit-box-  
shadow:4px 4px 4px 4px rgb(160, 103, 101);  
box-shadow:4px 4px 4px 4px rgb(160, 103,  
101) }
```

Background

The CSS property to change the background color of an element to HunterLab 42.5602, 16.5159, 9.3629 is called "background". The background property can be set on classes, ids or directly on the HTML element.

```
.background, #background, body{  
background: rgb(160, 103, 101) }
```

If only the background color should be changed can be used:

```
.background{ background-color: rgb(160,  
103, 101) }
```

This example shows the color as background, it is applied via the CSS property "background".

To optimize and compress your CSS code, you can use our [online CSS compressor and optimizer](#) based on csstidy. If you want to create a linear or radial gradient as background or border, check our [CSS Gradient Generator](#).

Hey! You found this booklet interesting? Support Converting Colors with the new Membership Option!

The pro membership hides all ads, plus gives you double the colors in the color bucket, and more awesome pro features!

[Learn more, Memberships starting at \\$2.50/m!](#)

**Follow me
on Twitter!**

@ConvertingColor