

Converting Colors

HunterLab(42.5573, 33.8052,
2.9369)

Have a look what the booklet for
HunterLab(42.5573, 33.8052,
2.9369) contains.

HunterLab(42.5573, 33.8052, 2.9369)	3
<i>Conversions</i>	4
<i>Details</i>	6
<i>Harmonies</i>	12
<i>Previews</i>	24
<i>Color Blindness Simulation</i>	28
<i>CSS Examples</i>	31

Color

**HunterLab(42.5573, 33.8052,
2.9369)**

Conversions

Conversions Part 1

Format	Color
Hex	B55876
RGB	181, 88, 118
RGB Percent	71%, 35%, 46%
CMY	0.2902, 0.6549, 0.5373
CMYK	0.00, 0.51, 0.35, 0.29
HSL	341°, 39%, 53%
HSV	341°, 51%, 71%
XYZ	25.8158, 18.1112, 19.2748
YIQ	119.2270, 45.7980, 29.0460

Conversions

Conversions Part 2

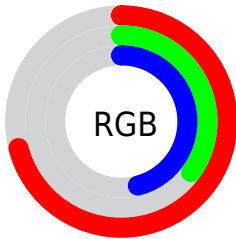
Format	Color
R_{YB}	181, 88, 118
Decimal	11884662
CIE _{Lab}	49.63, 40.91, 0.86
CIE _{LCh}	50, 40.922, 1.203
Yxy	18.1122, 0.4085, 0.2866
Android (android.graphics.Color)	4290074742 (0xFFB55876)
YUV	119.2270, -0.6049, 54.1749
Hunter-Lab	42.5573, 33.8052, 2.9369

Details

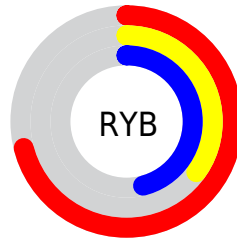
The HunterLab color **42.5573, 33.8052, 2.9369** is a dark color, and the websafe version is hex **CC6699**. A complement of this color would be **61.1206, -30.6343, 8.7226**, and the grayscale version is **43.0294, -2.2959, 2.3379**.

A 20% lighter version of the original color is **63.4845, 36.1718, 4.2345**, and **24.6250, 30.7983, 1.7619** is the 20% darker color. If you saturate the color by 10%, you get **39.0224, 40.7085, 4.1483**, and if you desaturate by 10%, it is **46.6609, 26.4817, 2.2631**.

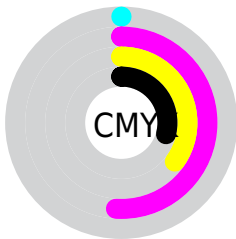
Distribution



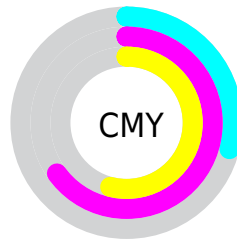
- Red (71%)
- Green (35%)
- Blue (46%)



- Red (71%)
- Yellow (35%)
- Blue (46%)



- Cyan (0%)
- Magenta (51%)
- Yellow (35%)
- Black (29%)



- Cyan (29%)
- Magenta (65%)
- Yellow (54%)

Brightness & Saturation Gradients

These gradients show how the HunterLab color 42.5573, 33.8052, 2.9369 changes by changing the brightness by 10 percent. The first figure shows a shift by +10% for each color and the second figure -10%.

Similar to the brightness gradients but the following saturation gradients show a change of the HunterLab color 42.5573, 33.8052, 2.9369 by changing the saturation by 10% instead.

42.5573, 33.8052,
2.9369

42.5573, 33.8052,
2.9369

155.4035, 42.9417,
9.4200

33.2123, 32.2686,
2.3791

63.4258, 36.5082,
4.1634

24.6726, 30.6135,
1.8593

74.8543, 37.6940,
4.8263

17.0244, 28.8677,
1.3815

86.8971, 38.7795,
5.5205

10.3868, 27.1669,
0.9491

99.5243, 39.7722,
6.2448

0.0000, INF, NaN

0.0000, NaN, NaN

112.7101, 40.6791,
6.9978

0.0000, NaN, NaN

126.4316, 41.5062,

0.0000, NaN, NaN

140.6687, 42.2588,
8.5863

■ 42.5573, 33.8052,
2.9369

■ 42.5573, 33.8052,
2.9369

■ 39.0224, 40.7085,
4.1483

■ 46.6609, 26.4817,
2.2631

■ 36.1403, 46.7597,
5.9164

■ 51.2440, 19.0432,
2.0609

■ 33.9829, 51.4290,
8.1848

■ 56.2319, 11.6590,
2.2562

■ 32.5759, 54.2720,
10.7898

■ 61.5614, 4.4128,
2.7782

■ 31.8326, 55.4862,
13.0357

■ 67.1814, -2.6651,
3.5666

■ 73.0508, -9.5734,
4.5723

■ 79.1369, -16.3254,
5.7564

■ 85.4134, -22.9399,
7.0884

■ 91.8589, -29.4373,
8.5444

Harmonies

Analogous

The Analogous color harmony consists of three colors that are next to each other on the color wheel.



42.5584, 28.8137, -14.6878



42.5573, 33.8052, 2.9369



42.5584, 27.9804, 15.0464

Triad

The Triadic color harmony groups three colors that are evenly spaced from another and form a triangle on the color wheel.



42.5584, 33.8027, 2.9379



42.5584, -17.3203, 20.7385



42.5584, -16.3393, -32.9568

Complementary

The Complementary color scheme is a pair of colors which are on the opposite of each other on the color wheel.



42.5573, 33.8052, 2.9369



61.1206, -30.6343, 8.7226

Split Complementary

Split-complementary colors differ from the complementary color scheme. The scheme consists of three colors, the original color and two neighbors of the complement color.



42.5584, -25.8946, -16.1996



42.5573, 33.8052, 2.9369



42.5584, -26.3982, 14.3186

Square

The Square scheme is like the rectangle color scheme, but the four colors are evenly spaced on the color wheel.



42.5584, 33.8027, 2.9379



42.5584, -2.9292, 22.6410



42.5584, -29.2878, 1.6858



42.5584, -1.6130, -39.5567

Rectangle

The Rectangle color scheme consists of four colors that form a rectangle on the color wheel.



42.5573, 33.8052, 2.9369



42.5584, 19.1924, 19.6149



42.5584, -29.2878, 1.6858



42.5584, -20.1798, -28.0769

Sweetspot

The Sweet Spot groups the original color and five complimentary colors.



42.5584, 33.8027, 2.9379



79.5745, 9.6351, 3.4011



40.9887, 34.5661, -37.3729



36.3065, 5.4139, 1.5132



95.4677, -5.0939, 5.1869



42.2927, -2.2566, 2.2978

Same Dimension

The Same Dimension uses a secret algorithm to generate beautiful new colors.



42.5584, 33.8027, 2.9379



51.5198, 55.9188, 5.8926



45.0884, 22.9115, 16.0423



29.2386, 1.3691, 1.3622



26.4519, 46.1492, 10.5074



4.8074, 8.6077, 0.2001

Inverse Universe

The Inverse Universe completely reimagines the original color for something new.



42.5584, 33.8027, 2.9379



51.5198, 55.9188, 5.8926



57.0110, -18.6419, -10.6601



29.2386, 1.3691, 1.3622



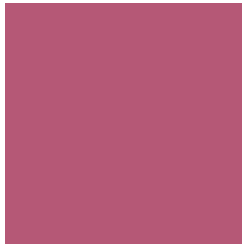
26.4519, 46.1492, 10.5074



4.8074, 8.6077, 0.2001

Previews

White Background



This preview shows how the HunterLab color 42.5573, 33.8052, 2.9369 looks on a white background.

Color Contrast Check

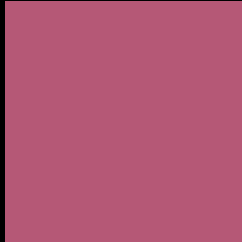
Large Text (above 18pt) WCAG AA ✓ Pass

Any Text WCAG AA ✓ Pass

Large Text (above 18pt) WCAG AAA ✓ Pass

Any Text WCAG AAA × Fail

Black Background



This preview shows how the HunterLab color 42.5573, 33.8052, 2.9369 looks on a black background.

Color Contrast Check

Large Text (above 18pt) WCAG AA ✓ Pass

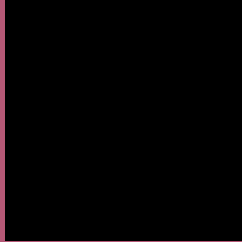
Any Text WCAG AA ✓ Pass

Large Text (above 18pt) WCAG AAA ✓ Pass

Any Text WCAG AAA × Fail

If you want to check with other color combinations, try the [Color Contrast Checker](#).

HunterLab 42.5573, 33.8052, 2.9369 Background



This preview shows how black text looks on a background with the HunterLab color 42.5573, 33.8052, 2.9369.



This preview shows how white text looks on a background with the HunterLab color 42.5573, 33.8052,

Color Blindness Simulation

Color vision deficiency is a very complex topic, and I could not describe the different causes any better than Wikipedia does, so if you want to learn more, you should check out their [article about color blindness](#).

Dichromacy



Original Color

42.5573, 33.8052, 2.9369

Protanopia

42.8711, -0.1095, -5.7982

Deuteranopia

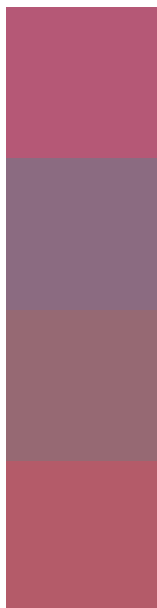
42.8741, 2.7571, 4.4521



Tritanopia

42.5674, 28.7563, 10.6385

Trichromacy



Original Color

42.5573, 33.8052, 2.9369

Protanomaly

41.9396, 11.1645, -3.3225

Deuteranomaly

42.2196, 13.7334, 3.4783

Tritanomaly

42.6678, 30.3924, 8.2527

Monochromacy



Original Color

42.5573, 33.8052, 2.9369

Achromatopsia

42.9506, -2.2917, 2.3336

Achromatomaly

42.1993, 10.1054, 1.6588

CSS Examples

Text

The CSS property to change the color of the text to HunterLab 42.5573, 33.8052, 2.9369 is called "color". The color property can be set on classes, ids or directly on the HTML element.

This example shows how text in the color `rgb(181, 88, 118)` looks like.

```
.text, #text, p{  
    color:rgb(181, 88, 118)  
}
```

If you want to add a text shadow in that color use the text-shadow property, you can generate a text shadow directly with our [CSS Text Shadow Generator](#).

Here you see how black text with a 4 pixel rgb(181, 88, 118) colored shadow looks like.

```
.shadow{ text-shadow: 4px 4px 2px rgb(181, 88, 118) }
```

Border

The CSS property to change the border of an element to HunterLab 42.5573, 33.8052, 2.9369 is called "border". The border property can be set on classes, ids or directly on the HTML element.

This example shows the color as border, it can be applied via the CSS property "border" or "border-color".

```
.border, #border, table{ border:4px solid rgb(181, 88, 118) }
```


If only the border color should be changed use the property `border-color`.

```
.border{ border-color:rgb(181, 88, 118) }
```

If you want to add a box shadow in that color use:

Here you see how a box with a 4 pixel `rgb(181, 88, 118)` colored shadow looks like.

```
.boxshadow{ -moz-box-shadow:4px 4px 4px  
4px rgb(181, 88, 118); -webkit-box-  
shadow:4px 4px 4px 4px rgb(181, 88, 118);  
box-shadow:4px 4px 4px 4px rgb(181, 88,  
118) }
```

Background

The CSS property to change the background color of an element to HunterLab 42.5573, 33.8052, 2.9369 is called "background". The background property can be set on classes, ids or directly on the HTML element.

```
.background, #background, body{  
background: rgb(181, 88, 118) }
```

If only the background color should be changed can be used:

```
.background{ background-color: rgb(181, 88,  
118) }
```

This example shows the color as background, it is applied via the CSS property "background".

To optimize and compress your CSS code, you can use our [online CSS compressor and optimizer](#) based on csstidy. If you want to create a linear or radial gradient as background or border, check our [CSS Gradient Generator](#).

Hey! You found this booklet interesting? Support Converting Colors with the new Membership Option!

The pro membership hides all ads, plus gives you double the colors in the color bucket, and more awesome pro features!

[Learn more, Memberships starting at \\$2.50/m!](#)

**Follow me
on Twitter!**

@ConvertingColor