

Converting Colors

HunterLab(42.6265, 12.5253,
16.3115)

Have a look what the booklet for
HunterLab(42.6265, 12.5253,
16.3115) contains.

HunterLab(42.7124, 12.4437, 16.2689)	3
<i>Conversions</i>	4
<i>Details</i>	6
<i>Harmonies</i>	12
<i>Previews</i>	24
<i>Color Blindness Simulation</i>	28
<i>CSS Examples</i>	31

Color

**HunterLab(42.7124, 12.4437,
16.2689)**

Conversions

Conversions Part 1

Format	Color
Hex	9F6A4F
RGB	159, 106, 79
RGB Percent	62%, 42%, 31%
CMY	0.3765, 0.5843, 0.6902
CMYK	0.00, 0.33, 0.50, 0.38
HSL	20°, 34%, 47%
HSV	20°, 50%, 62%
XYZ	20.8634, 18.2435, 9.8189
YIQ	118.7690, 40.2550, 2.8390

Conversions

Conversions Part 2

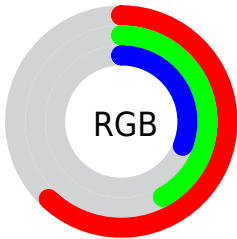
Format	Color
R_{YB}	159, 120, 79
Decimal	10447439
CIE _{Lab}	49.79, 18.03, 23.74
CIE _{LCh}	50, 29.817, 52.784
Yxy	18.2444, 0.4264, 0.3729
Android (android.graphics.Color)	4288637519 (0xFF9F6A4F)
YUV	118.7690, -19.6061, 35.2826
Hunter-Lab	42.7124, 12.4437, 16.2689

Details

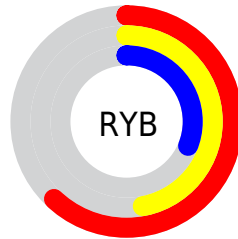
The HunterLab color **42.7124, 12.4437, 16.2689** is a dark color, and the websafe version is hex **996633**. A complement of this color would be **45.4610, -9.9281, -14.9395**, and the grayscale version is **42.9244, -2.2903, 2.3322**.

A 20% lighter version of the original color is **63.7269, 12.9608, 20.4949**, and **24.7888, 11.5437, 11.8572** is the 20% darker color. If you saturate the color by 10%, you get **40.0006, 16.2703, 17.9407**, and if you desaturate by 10%, it is **45.6184, 8.8599, 14.2244**.

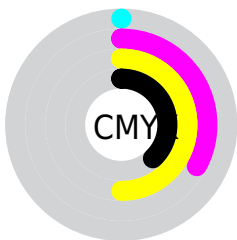
Distribution



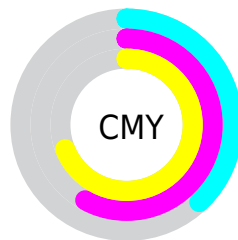
- Red (62%)
- Green (42%)
- Blue (31%)



- Red (62%)
- Yellow (47%)
- Blue (31%)



- Cyan (0%)
- Magenta (33%)
- Yellow (50%)
- Black (38%)



- Cyan (38%)
- Magenta (58%)
- Yellow (69%)

Brightness & Saturation Gradients

These gradients show how the HunterLab color 42.7124, 12.4437, 16.2689 changes by changing the brightness by 10 percent. The first figure shows a shift by +10% for each color and the second figure -10%.

Similar to the brightness gradients but the following saturation gradients show a change of the HunterLab color 42.7124, 12.4437, 16.2689 by changing the saturation by 10% instead.

■ 42.7124, 12.4437,
16.2689

■ 42.7124, 12.4437,
16.2689

155.6422, 13.5378,
32.8326

■ 33.3550, 11.9282,
14.1494

■ 63.6029, 13.1726,
20.2316

■ 24.8020, 11.2951,
11.8873

■ 75.0415, 13.4132,
22.1193

■ 17.1387, 10.5201,
9.4871

■ 87.0938, 13.5818,
23.9645

■ 10.4838, 9.5762,
7.3387

■ 99.7301, 13.6850,
25.7772

0.0000, INF, NaN

0.0000, NaN, NaN

■ 112.9246, 13.7280,
27.5651

0.0000, NaN, NaN

126.6544, 13.7154,

0.0000, NaN, NaN

140.8997, 13.6509,
31.0886

■ 42.7124, 12.4437,
16.2689

■ 42.7124, 12.4437,
16.2689

■ 40.0006, 16.2703,
17.9407

■ 45.6184, 8.8599,
14.2244

■ 37.5034, 20.3212,
19.1799

■ 48.6941, 5.5300,
11.8603

■ 35.2467, 24.5394,
19.9327

■ 51.9218, 2.4437,
9.2252

■ 33.2550, 28.8306,
20.1636

■ 55.2852, -0.4140,
6.3599

■ 31.5889, 32.8811,
20.0406

■ 58.7703, -3.0619,
3.2981

■ 62.3649, -5.5195,
0.0672

■ 66.0587, -7.8059,
-3.3101

■ 69.8428, -9.9393,
-6.8157

■ 73.7095, -11.9362,
-10.4346

Harmonies

Analogous

The Analogous color harmony consists of three colors that are next to each other on the color wheel.



42.7135, 20.9022, 9.9176



42.7124, 12.4437, 16.2689



42.7135, 0.6279, 18.7607

Triad

The Triadic color harmony groups three colors that are evenly spaced from another and form a triangle on the color wheel.



42.7135, 12.4416, 16.2695



42.7135, -22.6753, 4.9671



42.7135, 6.9360, -22.9737

Complementary

The Complementary color scheme is a pair of colors which are on the opposite of each other on the color wheel.



42.7124, 12.4437, 16.2689



45.4610, -9.9281, -14.9395

Split Complementary

Split-complementary colors differ from the complementary color scheme. The scheme consists of three colors, the original color and two neighbors of the complement color.



42.7135, -5.1148, -25.3616



42.7124, 12.4437, 16.2689



42.7135, -21.3790, -6.9819

Square

The Square scheme is like the rectangle color scheme, but the four colors are evenly spaced on the color wheel.



42.7135, 12.4416, 16.2695



42.7135, -19.0031, 13.4964



42.7135, -15.2460, -18.8691



42.7135, 17.4887, -13.0281

Rectangle

The Rectangle color scheme consists of four colors that form a rectangle on the color wheel.



42.7124, 12.4437, 16.2689



42.7135, -7.2226, 18.5590



42.7135, -15.2460, -18.8691



42.7135, 2.8952, -24.7806

Sweetspot

The Sweet Spot groups the original color and five complimentary colors.



42.7135, 12.4416, 16.2695



71.7264, 1.3105, 10.4530



38.2598, 32.3351, -9.8731



33.6339, 0.9854, 5.3223



89.8524, -4.7943, 4.8819



37.4146, -1.9963, 2.0328

Same Dimension

The Same Dimension uses a secret algorithm to generate beautiful new colors.



42.7135, 12.4416, 16.2695



53.2431, 22.2117, 24.1694



53.2828, -6.3550, 24.4900



26.4459, -0.3362, 2.8705



28.1997, 28.8767, 17.8821



4.6498, 1.7663, 2.8961

Inverse Universe

The Inverse Universe completely reimagines the original color for something new.



45.4610, -9.9281, -14.9395



57.5442, -13.3955, -25.3017



34.4642, 8.7724, -35.0380



26.7057, -2.3996, -0.0298



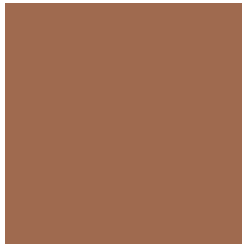
31.7637, -5.0161, -28.8735



5.0535, -1.8360, -2.3531

Previews

White Background



This preview shows how the HunterLab color 42.7124, 12.4437, 16.2689 looks on a white background.

Color Contrast Check

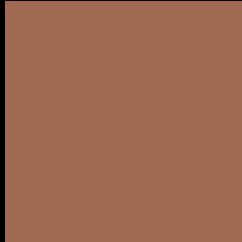
Large Text (above 18pt) WCAG AA ✓ Pass

Any Text WCAG AA ✓ Pass

Large Text (above 18pt) WCAG AAA ✓ Pass

Any Text WCAG AAA × Fail

Black Background



This preview shows how the HunterLab color 42.7124, 12.4437, 16.2689 looks on a black background.

Color Contrast Check

Large Text (above 18pt) WCAG AA ✓ Pass

Any Text WCAG AA ✓ Pass

Large Text (above 18pt) WCAG AAA ✓ Pass

Any Text WCAG AAA × Fail

If you want to check with other color combinations, try the [Color Contrast Checker](#).

HunterLab 42.7124, 12.4437, 16.2689 Background



This preview shows how black text looks on a background with the HunterLab color 42.7124, 12.4437, 16.2689.



This preview shows how white text looks on a background with the HunterLab color 42.7124, 12.4437,

Color Blindness Simulation

Color vision deficiency is a very complex topic, and I could not describe the different causes any better than Wikipedia does, so if you want to learn more, you should check out their [article about color blindness](#).

Dichromacy



Original Color

42.7124, 12.4437, 16.2689

Protanopia

42.9220, -4.0030, 14.7922

Deuteranopia

42.9236, 2.7325, 16.5412



Tritanopia

42.6680, 18.4706, 6.1165

Trichromacy



Original Color

42.7124, 12.4437, 16.2689

Protanomaly

42.5826, 1.7208, 15.1547

Deuteranomaly

42.7884, 6.2763, 16.4885

Tritanomaly

42.5146, 16.2865, 10.0203

Monochromacy



Original Color

42.7124, 12.4437, 16.2689

Achromatopsia

42.9506, -2.2917, 2.3336

Achromatomaly

42.5470, 2.5174, 8.0108

CSS Examples

Text

The CSS property to change the color of the text to HunterLab 42.7124, 12.4437, 16.2689 is called "color". The color property can be set on classes, ids or directly on the HTML element.

This example shows how text in the color `rgb(159, 106, 79)` looks like.

```
.text, #text, p{  
    color:rgb(159, 106, 79)  
}
```

If you want to add a text shadow in that color use the text-shadow property, you can generate a text shadow directly with our [CSS Text Shadow Generator](#).

Here you see how black text with a 4 pixel rgb(159, 106, 79) colored shadow looks like.

```
.shadow{ text-shadow: 4px 4px 2px rgb(159, 106, 79) }
```

Border

The CSS property to change the border of an element to HunterLab 42.7124, 12.4437, 16.2689 is called "border". The border property can be set on classes, ids or directly on the HTML element.

This example shows the color as border, it can be applied via the CSS property "border" or "border-color".

```
.border, #border, table{ border:4px solid rgb(159, 106, 79) }
```


If only the border color should be changed use the property `border-color`.

```
.border{ border-color:rgb(159, 106, 79) }
```

If you want to add a box shadow in that color use:

Here you see how a box with a 4 pixel `rgb(159, 106, 79)` colored shadow looks like.

```
.boxshadow{ -moz-box-shadow:4px 4px 4px  
4px rgb(159, 106, 79); -webkit-box-  
shadow:4px 4px 4px 4px rgb(159, 106, 79);  
box-shadow:4px 4px 4px 4px rgb(159, 106,  
79) }
```

Background

The CSS property to change the background color of an element to HunterLab 42.7124, 12.4437, 16.2689 is called "background". The background property can be set on classes, ids or directly on the HTML element.

```
.background, #background, body{  
background: rgb(159, 106, 79) }
```

If only the background color should be changed can be used:

```
.background{ background-color: rgb(159,  
106, 79) }
```

This example shows the color as background, it is applied via the CSS property "background".

To optimize and compress your CSS code, you can use our [online CSS compressor and optimizer](#) based on csstidy. If you want to create a linear or radial gradient as background or border, check our [CSS Gradient Generator](#).

Hey! You found this booklet interesting? Support Converting Colors with the new Membership Option!

The pro membership hides all ads, plus gives you double the colors in the color bucket, and more awesome pro features!

[Learn more, Memberships starting at \\$2.50/m!](#)

**Follow me
on Twitter!**

@ConvertingColor