

Converting Colors

HunterLab(42.6623, 5.0617,
12.3053)

Have a look what the booklet for
HunterLab(42.6623, 5.0617,
12.3053) contains.

HunterLab(42.6623, 5.0619, 12.3054)	3
<i>Conversions</i>	4
<i>Details</i>	6
<i>Harmonies</i>	12
<i>Previews</i>	24
<i>Color Blindness Simulation</i>	28
<i>CSS Examples</i>	31

Color

**HunterLab(42.6623, 5.0619,
12.3054)**

Conversions

Conversions Part 1

Format	Color
Hex	8F705C
RGB	143, 112, 92
RGB Percent	56%, 44%, 36%
CMY	0.4392, 0.5608, 0.6392
CMYK	0.00, 0.22, 0.36, 0.44
HSL	24°, 22%, 46%
HSV	24°, 36%, 56%
XYZ	19.0537, 18.2007, 12.6341
YIQ	118.9890, 24.8960, 0.3520

Conversions

Conversions Part 2

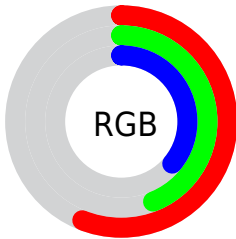
Format	Color
R_{YB}	143, 125, 92
Decimal	9400412
CIE Lab	49.74, 9.27, 15.79
CIE LCh	50, 18.314, 59.589
Yxy	18.2016, 0.3819, 0.3648
Android (android.graphics.Color)	4287590492 (0xFF8F705C)
YUV	118.9890, -13.3056, 21.0576
Hunter-Lab	42.6623, 5.0619, 12.3054

Details

The HunterLab color $42.6623, 5.0619, 12.3054$ is a dark color, and the websafe version is hex 996666 . A complement of this color would be $42.9229, -6.6880, -9.5639$, and the grayscale version is $42.9902, -2.2939, 2.3357$.

A 20% lighter version of the original color is $63.6472, 4.8554, 15.4649$, and $24.6743, 4.8622, 9.0783$ is the 20% darker color. If you saturate the color by 10%, you get $40.1849, 7.7378, 14.3454$, and if you desaturate by 10%, it is $45.2629, 2.6017, 9.9672$.

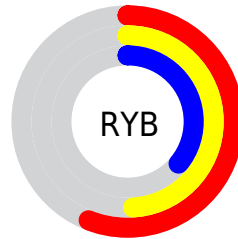
Distribution



Red (56%)

Green (44%)

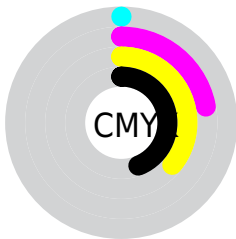
Blue (36%)



Red (56%)

Yellow (49%)

Blue (36%)

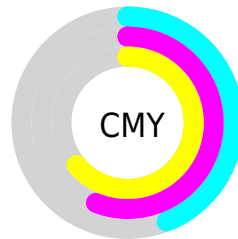


Cyan (0%)

Magenta (22%)

Yellow (36%)

Black (44%)



Cyan (44%)

Magenta (56%)

Yellow (64%)

Brightness & Saturation Gradients

These gradients show how the HunterLab color 42.6623, 5.0619, 12.3054 changes by changing the brightness by 10 percent. The first figure shows a shift by +10% for each color and the second figure -10%.

Similar to the brightness gradients but the following saturation gradients show a change of the HunterLab color 42.6623, 5.0619, 12.3054 by changing the saturation by 10% instead.

■ 42.6623, 5.0619,
12.3054

■ 42.6623, 5.0619,
12.3054

155.5650, 2.7770,
25.1672

■ 33.3089, 5.0180,
10.7680

■ 63.5457, 4.9241,
15.2530

■ 24.7601, 4.8862,
9.1566

■ 74.9810, 4.7622,
16.6888

■ 17.1017, 4.6461,
7.4302

■ 87.0302, 4.5458,
18.1109

■ 10.4524, 4.2687,
6.9207

■ 99.6636, 4.2791,
19.5247

0.0000, INF, NaN

0.0000, NaN, NaN

112.8552, 3.9661,
20.9344

0.0000, NaN, NaN

126.5824, 3.6097,

0.0000, NaN, NaN

22.3432

0.0000, NaN, NaN

140.8250, 3.2126,
23.7535

■ 42.6623, 5.0619,
12.3054

■ 42.6623, 5.0619,
12.3054

■ 40.1849, 7.7378,
14.3454

■ 45.2629, 2.6017,
9.9672

■ 37.8410, 10.6405,
16.0432

■ 47.9717, 0.3502,
7.3673

■ 35.6464, 13.7652,
17.3545

■ 50.7793, -1.7092,
4.5393

■ 33.6170, 17.0938,
18.2367

■ 53.6765, -3.5925,
1.5119

■ 31.7691, 20.5870,
18.6571

■ 56.6552, -5.3155,
-1.6909

■ 30.1163, 24.1701,
18.6301

■ 59.7086, -6.8936,
-5.0488

■ 29.4559, 25.6927,
18.6004

■ 62.8305, -8.3409,
-8.5446

■ 66.0157, -9.6704,
-12.1639

■ 69.2595, -10.8937,
-15.8947

Harmonies

Analogous

The Analogous color harmony consists of three colors that are next to each other on the color wheel.



42.6633, 10.6239, 8.4025



42.6623, 5.0619, 12.3054



42.6633, -2.1781, 13.6314

Triad

The Triadic color harmony groups three colors that are evenly spaced from another and form a triangle on the color wheel.



42.6633, 5.0602, 12.3060



42.6633, -15.4250, 2.4178



42.6633, 4.8746, -10.9945

Complementary

The Complementary color scheme is a pair of colors which are on the opposite of each other on the color wheel.



42.6623, 5.0619, 12.3054



42.9229, -6.6880, -9.5639

Split Complementary

Split-complementary colors differ from the complementary color scheme. The scheme consists of three colors, the original color and two neighbors of the complement color.



42.6633, -2.3792, -13.3008



42.6623, 5.0619, 12.3054



42.6633, -13.8096, -4.8098

Square

The Square scheme is like the rectangle color scheme, but the four colors are evenly spaced on the color wheel.



42.6633, 5.0602, 12.3060



42.6633, -13.7199, 8.5425



42.6633, -9.1528, -10.8702



42.6633, 10.5118, -5.0033

Rectangle

The Rectangle color scheme consists of four colors that form a rectangle on the color wheel.



42.6623, 5.0619, 12.3054



42.6633, -6.8828, 13.0824



42.6633, -9.1528, -10.8702



42.6633, 2.5293, -12.2670

Sweetspot

The Sweet Spot groups the original color and five complimentary colors.



42.6633, 5.0602, 12.3060



65.8462, -0.7831, 8.2173



38.6465, 19.0098, -4.8293



31.3180, -0.2157, 4.1498



85.4018, -4.5568, 4.6400



33.5864, -1.7921, 1.8248

Same Dimension

The Same Dimension uses a secret algorithm to generate beautiful new colors.



42.6633, 5.0602, 12.3060



54.3458, 9.7044, 18.7499



49.5156, -6.5787, 18.2719



23.9779, -0.4848, 2.6767



27.7675, 23.9790, 17.5300



3.3838, 0.8478, 2.0999

Inverse Universe

The Inverse Universe completely reimagines the original color for something new.



42.9229, -6.6880, -9.5639



54.7571, -9.3871, -16.8138



36.0343, 4.9766, -20.4665



24.0124, -1.9908, -0.1244



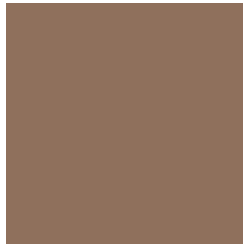
27.9454, -1.5624, -31.5566



3.4307, -1.1973, -1.7035

Previews

White Background



This preview shows how the HunterLab color 42.6623, 5.0619, 12.3054 looks on a white background.

Color Contrast Check

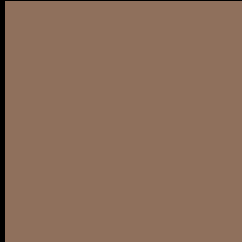
Large Text (above 18pt) WCAG AA ✓ Pass

Any Text WCAG AA ✓ Pass

Large Text (above 18pt) WCAG AAA ✓ Pass

Any Text WCAG AAA × Fail

Black Background



This preview shows how the HunterLab color 42.6623, 5.0619, 12.3054 looks on a black background.

Color Contrast Check

Large Text (above 18pt) WCAG AA ✓ Pass

Any Text WCAG AA ✓ Pass

Large Text (above 18pt) WCAG AAA ✓ Pass

Any Text WCAG AAA × Fail

If you want to check with other color combinations, try the [Color Contrast Checker](#).

HunterLab 42.6623, 5.0619, 12.3054 Background



This preview shows how black text looks on a background with the HunterLab color 42.6623, 5.0619, 12.3054.



This preview shows how white text looks on a background with the HunterLab color 42.6623, 5.0619,

Color Blindness Simulation

Color vision deficiency is a very complex topic, and I could not describe the different causes any better than Wikipedia does, so if you want to learn more, you should check out their [article about color blindness](#).

Dichromacy



Original Color

42.6623, 5.0619, 12.3054

Protanopia

42.6834, -2.9830, 11.2104

Deuteranopia

42.7742, 2.7500, 12.3707



Tritanopia

42.8166, 10.6743, 3.2656

Trichromacy



Original Color

42.6623, 5.0619, 12.3054

Protanomaly

42.6667, -0.2762, 11.5707

Deuteranomaly

42.6127, 3.5595, 12.2321

Tritanomaly

42.7251, 8.6205, 6.7900

Monochromacy



Original Color

42.6623, 5.0619, 12.3054

Achromatopsia

42.9506, -2.2917, 2.3336

Achromatomaly

42.6428, 0.3359, 6.1661

CSS Examples

Text

The CSS property to change the color of the text to HunterLab 42.6623, 5.0619, 12.3054 is called "color". The color property can be set on classes, ids or directly on the HTML element.

This example shows how text in the color `rgb(143, 112, 92)` looks like.

```
.text, #text, p{  
    color:rgb(143, 112, 92)  
}
```

If you want to add a text shadow in that color use the text-shadow property, you can generate a text shadow directly with our [CSS Text Shadow Generator](#).

Here you see how black text with a 4 pixel rgb(143, 112, 92) colored shadow looks like.

```
.shadow{ text-shadow: 4px 4px 2px rgb(143, 112, 92) }
```

Border

The CSS property to change the border of an element to HunterLab 42.6623, 5.0619, 12.3054 is called "border". The border property can be set on classes, ids or directly on the HTML element.

This example shows the color as border, it can be applied via the CSS property "border" or "border-color".

```
.border, #border, table{ border:4px solid rgb(143, 112, 92) }
```


If only the border color should be changed use the property `border-color`.

```
.border{ border-color:rgb(143, 112, 92) }
```

If you want to add a box shadow in that color use:

Here you see how a box with a 4 pixel `rgb(143, 112, 92)` colored shadow looks like.

```
.boxshadow{ -moz-box-shadow:4px 4px 4px  
4px rgb(143, 112, 92); -webkit-box-  
shadow:4px 4px 4px 4px rgb(143, 112, 92);  
box-shadow:4px 4px 4px 4px rgb(143, 112,  
92) }
```

Background

The CSS property to change the background color of an element to HunterLab 42.6623, 5.0619, 12.3054 is called "background". The background property can be set on classes, ids or directly on the HTML element.

```
.background, #background, body{  
background: rgb(143, 112, 92) }
```

If only the background color should be changed can be used:

```
.background{ background-color: rgb(143,  
112, 92) }
```

This example shows the color as background, it is applied via the CSS property "background".

To optimize and compress your CSS code, you can use our [online CSS compressor and optimizer](#) based on csstidy. If you want to create a linear or radial gradient as background or border, check our [CSS Gradient Generator](#).

Hey! You found this booklet interesting? Support Converting Colors with the new Membership Option!

The pro membership hides all ads, plus gives you double the colors in the color bucket, and more awesome pro features!

[Learn more, Memberships starting at \\$2.50/m!](#)

**Follow me
on Twitter!**

@ConvertingColor