

Converting Colors

HunterLab(42.7080, 10.6969,
18.4778)

Have a look what the booklet for
HunterLab(42.7080, 10.6969,
18.4778) contains.

HunterLab(42.6927, 10.8474, 18.4500)	3
<i>Conversions</i>	4
<i>Details</i>	6
<i>Harmonies</i>	12
<i>Previews</i>	24
<i>Color Blindness Simulation</i>	28
<i>CSS Examples</i>	31

Color

**HunterLab(42.6927, 10.8474,
18.4500)**

Conversions

Conversions Part 1

Format	Color
Hex	9E6B46
RGB	158, 107, 70
RGB Percent	62%, 42%, 27%
CMY	0.3804, 0.5804, 0.7255
CMYK	0.00, 0.32, 0.56, 0.38
HSL	25°, 39%, 45%
HSV	25°, 56%, 62%
XYZ	20.4637, 18.2267, 8.2339
YIQ	118.0310, 42.2730, -0.6950

Conversions

Conversions Part 2

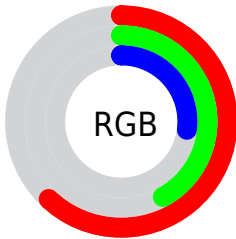
Format	Color
R_{YB}	158, 134, 70
Decimal	10382150
CIE _{Lab}	49.77, 16.18, 28.82
CIE _{LCh}	50, 33.054, 60.687
Yxy	18.2276, 0.4361, 0.3884
Android (android.graphics.Color)	4288572230 (0xFF9E6B46)
YUV	118.0310, -23.6793, 35.0528
Hunter-Lab	42.6927, 10.8474, 18.4500

Details

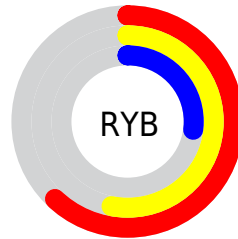
The HunterLab color **42.6927, 10.8474, 18.4500** is a dark color, and the websafe version is hex **996633**. A complement of this color would be **41.7667, -6.7022, -20.2999**, and the grayscale version is **42.6534, -2.2759, 2.3174**.

A 20% lighter version of the original color is **63.6987, 11.1322, 23.2009**, and **24.6611, 9.9200, 13.1586** is the 20% darker color. If you saturate the color by 10%, you get **40.3042, 14.1668, 19.9127**, and if you desaturate by 10%, it is **45.2389, 7.7802, 16.5286**.

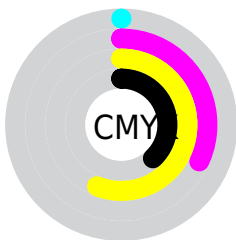
Distribution



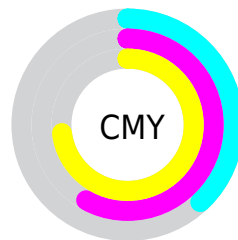
- Red (62%)
- Green (42%)
- Blue (27%)



- Red (62%)
- Yellow (53%)
- Blue (27%)



- Cyan (0%)
- Magenta (32%)
- Yellow (56%)
- Black (38%)



- Cyan (38%)
- Magenta (58%)
- Yellow (73%)

Brightness & Saturation Gradients

These gradients show how the HunterLab color 42.6927, 10.8474, 18.4500 changes by changing the brightness by 10 percent. The first figure shows a shift by +10% for each color and the second figure -10%.

Similar to the brightness gradients but the following saturation gradients show a change of the HunterLab color 42.6927, 10.8474, 18.4500 by changing the saturation by 10% instead.

■ 42.6927, 10.8474, 18.4500

■ 42.6927, 10.8474, 18.4500

155.6119, 11.2417, 37.4656

■ 33.3369, 10.4278, 15.9456

■ 63.5804, 11.3982, 23.0863

■ 24.7855, 9.8958, 13.2572

■ 75.0177, 11.5556, 25.2739

■ 17.1242, 9.2268, 10.7121

■ 87.0688, 11.6445, 27.3997

■ 10.4715, 8.3912, 7.3301

■ 99.7040, 11.6710, 29.4768

0.0000, INF, NaN

0.0000, NaN, NaN

■ 112.8973, 11.6400, 31.5149

0.0000, NaN, NaN

126.6261, 11.5559,

0.0000, NaN, NaN

33.5218

0.0000, NaN, NaN

140.8703, 11.4220,
35.5037

■ 42.6927, 10.8474,
18.4500

■ 42.6927, 10.8474,
18.4500

■ 40.3042, 14.1668,
19.9127

■ 45.2389, 7.7802,
16.5286

■ 38.0857, 17.7293,
20.8709

■ 47.9249, 4.9728,
14.1949

■ 36.0541, 21.4963,
21.2938

■ 50.7386, 2.4145,
11.4963

■ 34.2228, 25.3980,
21.1942

■ 53.6678, 0.0917,
8.4760

■ 33.4917, 27.0609,
21.1112

■ 56.7019, -2.0125,
5.1723

■ 59.8317, -3.9158,
1.6185

■ 63.0487, -5.6358,
-2.1566

■ 66.3458, -7.1894,
-6.1284

■ 69.7167, -8.5923,
-10.2761

Harmonies

Analogous

The Analogous color harmony consists of three colors that are next to each other on the color wheel.



42.6938, 21.7655, 12.8850



42.6927, 10.8474, 18.4500



42.6938, -2.5836, 20.0819

Triad

The Triadic color harmony groups three colors that are evenly spaced from another and form a triangle on the color wheel.



42.6938, 10.8453, 18.4505



42.6938, -24.7757, 2.0340



42.6938, 11.4344, -24.0321

Complementary

The Complementary color scheme is a pair of colors which are on the opposite of each other on the color wheel.



42.6927, 10.8474, 18.4500



41.7667, -6.7022, -20.2999

Split Complementary

Split-complementary colors differ from the complementary color scheme. The scheme consists of three colors, the original color and two neighbors of the complement color.



42.6938, -1.9762, -29.4824



42.6927, 10.8474, 18.4500



42.6938, -21.9569, -11.8966

Square

The Square scheme is like the rectangle color scheme, but the four colors are evenly spaced on the color wheel.



42.6938, 10.8453, 18.4505



42.6938, -22.2023, 12.5198



42.6938, -13.9898, -24.4853



42.6938, 22.1336, -11.2397

Rectangle

The Rectangle color scheme consists of four colors that form a rectangle on the color wheel.



42.6927, 10.8474, 18.4500



42.6938, -10.8669, 19.2818



42.6938, -13.9898, -24.4853



42.6938, 7.0436, -26.9309

Sweetspot

The Sweet Spot groups the original color and five complimentary colors.



42.6938, 10.8453, 18.4505



71.6662, 0.6151, 12.1158



36.1084, 34.5045, -7.0249



33.6749, 0.5630, 6.1225



89.8524, -4.7943, 4.8819



37.4146, -1.9963, 2.0328

Same Dimension

The Same Dimension uses a secret algorithm to generate beautiful new colors.



42.6938, 10.8453, 18.4505



53.5092, 20.3159, 27.2394



54.5319, -9.6078, 27.1340



26.6113, -0.6168, 3.0509



30.0973, 23.9044, 18.9643



4.9372, 1.1850, 3.0630

Inverse Universe

The Inverse Universe completely reimagines the original color for something new.



41.7667, -6.7022, -20.2999



51.9711, -7.6645, -35.1258



30.2083, 14.3485, -44.6234



26.5359, -2.1228, -0.2349



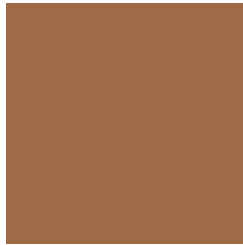
28.5059, 0.3170, -36.3143



4.7731, -1.4489, -2.8383

Previews

White Background



This preview shows how the HunterLab color 42.6927, 10.8474, 18.4500 looks on a white background.

Color Contrast Check

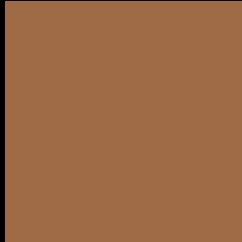
Large Text (above 18pt) WCAG AA ✓ Pass

Any Text WCAG AA ✓ Pass

Large Text (above 18pt) WCAG AAA ✓ Pass

Any Text WCAG AAA × Fail

Black Background



This preview shows how the HunterLab color 42.6927, 10.8474, 18.4500 looks on a black background.

Color Contrast Check

Large Text (above 18pt) WCAG AA ✓ Pass

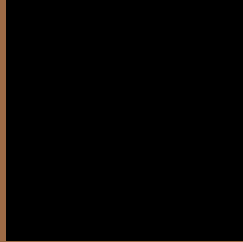
Any Text WCAG AA ✓ Pass

Large Text (above 18pt) WCAG AAA ✓ Pass

Any Text WCAG AAA × Fail

If you want to check with other color combinations, try the [Color Contrast Checker](#).

HunterLab 42.6927, 10.8474, 18.4500 Background



This preview shows how black text looks on a background with the HunterLab color 42.6927, 10.8474, 18.4500.



This preview shows how white text looks on a background with the HunterLab color 42.6927, 10.8474,

Color Blindness Simulation

Color vision deficiency is a very complex topic, and I could not describe the different causes any better than Wikipedia does, so if you want to learn more, you should check out their [article about color blindness](#).

Dichromacy



Original Color

42.6927, 10.8474, 18.4500

Protanopia

42.8430, -4.6212, 17.3531

Deuteranopia

42.7313, 3.1527, 18.5741



Tritanopia

42.6680, 18.4706, 6.1165

Trichromacy



Original Color

42.6927, 10.8474, 18.4500

Protanomaly

42.7995, 0.7915, 17.6547

Deuteranomaly

42.7581, 5.8954, 18.6435

Tritanomaly

42.6620, 15.3534, 11.5107

Monochromacy



Original Color

42.6927, 10.8474, 18.4500

Achromatopsia

42.5634, -2.2711, 2.3126

Achromatomaly

42.3801, 1.8135, 8.9218

CSS Examples

Text

The CSS property to change the color of the text to HunterLab 42.6927, 10.8474, 18.4500 is called "color". The color property can be set on classes, ids or directly on the HTML element.

This example shows how text in the color `rgb(158, 107, 70)` looks like.

```
.text, #text, p{  
    color:rgb(158, 107, 70)  
}
```

If you want to add a text shadow in that color use the text-shadow property, you can generate a text shadow directly with our [CSS Text Shadow Generator](#).

Here you see how black text with a 4 pixel rgb(158, 107, 70) colored shadow looks like.

```
.shadow{ text-shadow: 4px 4px 2px rgb(158, 107, 70) }
```

Border

The CSS property to change the border of an element to HunterLab 42.6927, 10.8474, 18.4500 is called "border". The border property can be set on classes, ids or directly on the HTML element.

This example shows the color as border, it can be applied via the CSS property "border" or "border-color".

```
.border, #border, table{ border:4px solid rgb(158, 107, 70) }
```


If only the border color should be changed use the property `border-color`.

```
.border{ border-color:rgb(158, 107, 70) }
```

If you want to add a box shadow in that color use:

Here you see how a box with a 4 pixel `rgb(158, 107, 70)` colored shadow looks like.

```
.boxshadow{ -moz-box-shadow:4px 4px 4px  
4px rgb(158, 107, 70); -webkit-box-  
shadow:4px 4px 4px 4px rgb(158, 107, 70);  
box-shadow:4px 4px 4px 4px rgb(158, 107,  
70) }
```

Background

The CSS property to change the background color of an element to HunterLab 42.6927, 10.8474, 18.4500 is called "background". The background property can be set on classes, ids or directly on the HTML element.

```
.background, #background, body{  
background: rgb(158, 107, 70) }
```

If only the background color should be changed can be used:

```
.background{ background-color: rgb(158,  
107, 70) }
```

This example shows the color as background, it is applied via the CSS property "background".

To optimize and compress your CSS code, you can use our [online CSS compressor and optimizer](#) based on csstidy. If you want to create a linear or radial gradient as background or border, check our [CSS Gradient Generator](#).

Hey! You found this booklet interesting? Support Converting Colors with the new Membership Option!

The pro membership hides all ads, plus gives you double the colors in the color bucket, and more awesome pro features!

[Learn more, Memberships starting at \\$2.50/m!](#)

**Follow me
on Twitter!**

@ConvertingColor