

Converting Colors

HunterLab(42.8187, 47.5315,
0.1402)

Have a look what the booklet for
HunterLab(42.8187, 47.5315,
0.1402) contains.

| | |
|--|----|
| HunterLab(42.8766, 47.5246, 0.4231) | 3 |
| <i>Conversions</i> | 4 |
| <i>Details</i> | 6 |
| <i>Harmonies</i> | 12 |
| <i>Previews</i> | 24 |
| <i>Color Blindness Simulation</i> | 28 |
| <i>CSS Examples</i> | 31 |

Color

**HunterLab(42.8766, 47.5246,
0.4231)**

Conversions

Conversions Part 1

| Format | Color |
|---------------|----------------------------|
| Hex | C64A7D |
| RGB | 198, 74, 125 |
| RGB Percent | 78%, 29%, 49% |
| CMY | 0.2235, 0.7098, 0.5098 |
| CMYK | 0.00, 0.63, 0.37, 0.22 |
| HSL | 335°, 52%, 53% |
| HSV | 335°, 63%, 78% |
| XYZ | 29.4392, 18.3840, 21.3989 |
| YIQ | 116.8900, 57.5330, 42.1490 |

Conversions

Conversions Part 2

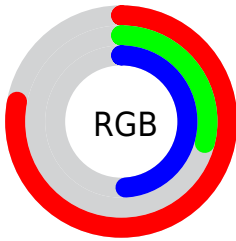
| Format | Color |
|-------------------------------------|------------------------------|
| RYB | 198, 74, 125 |
| Decimal | 12995197 |
| CIELab | 49.96, 53.99, -2.56 |
| CIELCh | 50, 54.051, 357.288 |
| Yxy | 18.3850, 0.4253, 0.2656 |
| Android (android.graphics.Color) | 4291185277 (0xFFC64A7D) |
| YUV | 116.8900, 3.9982, 71.1335 |
| Hunter-Lab | 42.8766, 47.5246, 0.4231 |

Details

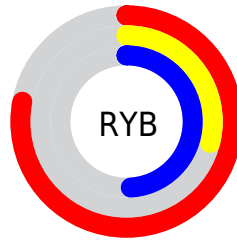
The HunterLab color **42.8766, 47.5246, 0.4231** is a dark color, and the websafe version is hex **CC6699**. The color can be described as dark muted rose. A complement of this color would be **66.2957, -39.8586, 15.4640**, and the grayscale version is **42.1051, -2.2466, 2.2877**.

A 20% lighter version of the original color is **63.3521, 49.8098, 0.9813**, and **24.9550, 43.4857, -0.1066** is the 20% darker color. If you saturate the color by 10%, you get **39.8290, 54.0721, 2.0815**, and if you desaturate by 10%, it is **46.6619, 39.8560, -0.4580**.

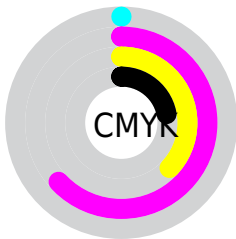
Distribution



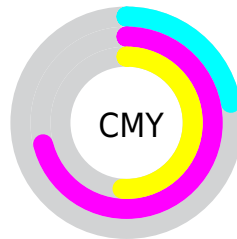
- Red (78%)
- Green (29%)
- Blue (49%)



- Red (78%)
- Yellow (29%)
- Blue (49%)



- Cyan (0%)
- Magenta (63%)
- Yellow (37%)
- Black (22%)



- Cyan (22%)
- Magenta (71%)
- Yellow (51%)

Brightness & Saturation Gradients

These gradients show how the HunterLab color 42.8766, 47.5246, 0.4231 changes by changing the brightness by 10 percent. The first figure shows a shift by +10% for each color and the second figure -10%.

Similar to the brightness gradients but the following saturation gradients show a change of the HunterLab color 42.8766, 47.5246, 0.4231 by changing the saturation by 10% instead.

42.8766, 47.5246,
0.4231

42.8766, 47.5246,
0.4231

155.8949, 60.6554,
5.5869

33.5063, 45.5651,
0.0578

63.7905, 51.1329,
1.3035

24.9391, 43.5471,
-0.2522

75.2397, 52.7776,
1.8081

17.2599, 41.5748,
-0.4970

87.3021, 54.3186,
2.3519

10.5868, 39.9968,
-0.6635

99.9480, 55.7612,
2.9326

0.0000, INF, -NF

0.0000, INF, NaN

113.1516, 57.1109,
3.5481

0.0000, NaN, NaN

126.8904, 58.3732,

0.0000, NaN, NaN

4.1966

0.0000, NaN, NaN

141.1441, 59.5531,
4.8766

■ 42.8766, 47.5246,
0.4231

■ 42.8766, 47.5246,
0.4231

■ 39.8290, 54.0721,
2.0815

■ 46.6619, 39.8560,
-0.4580

■ 37.5851, 58.9182,
4.4900

■ 51.0883, 31.5985,
-0.6331

■ 36.1596, 61.6170,
7.4890

■ 56.0622, 23.1202,
-0.2088

■ 35.5054, 62.4955,
9.8315

■ 61.4984, 14.6456,
0.7032

■ 67.3250, 6.2915,
2.0049

■ 73.4834, -1.8931,
3.6169

■ 79.9265, -9.8977,
5.4771

■ 86.6164, -17.7318,
7.5379

■ 93.5229, -25.4135,
9.7632

Harmonies

Analogous

The Analogous color harmony consists of three colors that are next to each other on the color wheel.



42.8777, 38.5012, -24.9427



42.8766, 47.5246, 0.4231



42.8777, 41.1631, 16.7722

Triad

The Triadic color harmony groups three colors that are evenly spaced from another and form a triangle on the color wheel.



42.8777, 47.5215, 0.4242



42.8777, -19.7020, 24.6801



42.8777, -22.4872, -45.9248

Complementary

The Complementary color scheme is a pair of colors which are on the opposite of each other on the color wheel.



42.8766, 47.5246, 0.4231



66.2957, -39.8586, 15.4640

Split Complementary

Split-complementary colors differ from the complementary color scheme. The scheme consists of three colors, the original color and two neighbors of the complement color.



42.8777, -33.2837, -19.9900



42.8766, 47.5246, 0.4231



42.8777, -31.9132, 18.6538

Square

The Square scheme is like the rectangle color scheme, but the four colors are evenly spaced on the color wheel.



42.8777, 47.5215, 0.4242



42.8777, -0.3094, 26.0033



42.8777, -36.3616, 4.1597



42.8777, -4.2356, -58.7684

Rectangle

The Rectangle color scheme consists of four colors that form a rectangle on the color wheel.



42.8766, 47.5246, 0.4231



42.8777, 29.6382, 22.3854



42.8777, -36.3616, 4.1597



42.8777, -26.9600, -37.9727

Sweetspot

The Sweet Spot groups the original color and five complimentary colors.



42.8777, 47.5215, 0.4242



84.3712, 15.7564, 1.4619



38.8814, 44.6927, -56.7283



38.0126, 8.7914, 0.4631

0.0000, NaN, NaN



46.2646, -2.4686, 2.5136

Same Dimension

The Same Dimension uses a secret algorithm to generate beautiful new colors.



42.8777, 47.5215, 0.4242



51.8303, 74.5099, 3.7856



43.4671, 37.7738, 18.6069



32.7232, 1.7106, 1.1789



28.6606, 50.5011, 7.5212



6.3504, 11.4043, 0.0034

Inverse Universe

The Inverse Universe completely reimagines the original color for something new.



42.8777, 47.5215, 0.4242



51.8303, 74.5099, 3.7856



64.3101, -26.6931, -10.0954



32.7232, 1.7106, 1.1789



28.6606, 50.5011, 7.5212



6.3504, 11.4043, 0.0034

Previews

White Background



This preview shows how the HunterLab color 42.8766, 47.5246, 0.4231 looks on a white background.

Color Contrast Check

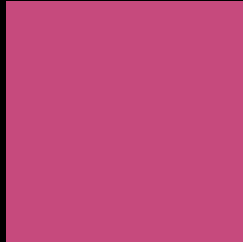
Large Text (above 18pt) WCAG AA ✓ Pass

Any Text WCAG AA × Fail

Large Text (above 18pt) WCAG AAA × Fail

Any Text WCAG AAA × Fail

Black Background



This preview shows how the HunterLab color 42.8766, 47.5246, 0.4231 looks on a black background.

Color Contrast Check

Large Text (above 18pt) WCAG AA ✓ Pass

Any Text WCAG AA ✓ Pass

Large Text (above 18pt) WCAG AAA ✓ Pass

Any Text WCAG AAA × Fail

If you want to check with other color combinations, try the [Color Contrast Checker](#).

HunterLab 42.8766, 47.5246, 0.4231 Background



This preview shows how black text looks on a background with the HunterLab color 42.8766, 47.5246, 0.4231.



This preview shows how white text looks on a background with the HunterLab color 42.8766, 47.5246,

0.4231.

Color Blindness Simulation

Color vision deficiency is a very complex topic, and I could not describe the different causes any better than Wikipedia does, so if you want to learn more, you should check out their [article about color blindness](#).

Dichromacy



Original Color

42.8766, 47.5246, 0.4231

Protanopia

43.1698, 2.1207, -14.7525

Deuteranopia

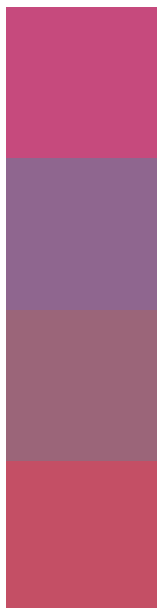
43.1833, 2.6988, 2.6942



Tritanopia

42.8267, 38.7736, 14.2868

Trichromacy



Original Color

42.8766, 47.5246, 0.4231

Protanomaly

41.6240, 17.3729, -11.0632

Deuteranomaly

42.0195, 18.3185, 0.6889

Tritanomaly

42.7403, 41.7671, 9.9883

Monochromacy



Original Color

42.8766, 47.5246, 0.4231

Achromatopsia

42.1768, -2.2504, 2.2915

Achromatomaly

40.9566, 15.0465, -0.2227

CSS Examples

Text

The CSS property to change the color of the text to HunterLab 42.8766, 47.5246, 0.4231 is called "color". The color property can be set on classes, ids or directly on the HTML element.

This example shows how text in the color `rgb(198, 74, 125)` looks like.

```
.text, #text, p{  
    color:rgb(198, 74, 125)  
}
```

If you want to add a text shadow in that color use the text-shadow property, you can generate a text shadow directly with our [CSS Text Shadow Generator](#).

Here you see how black text with a 4 pixel rgb(198, 74, 125) colored shadow looks like.

```
.shadow{ text-shadow: 4px 4px 2px rgb(198, 74, 125) }
```

Border

The CSS property to change the border of an element to HunterLab 42.8766, 47.5246, 0.4231 is called "border". The border property can be set on classes, ids or directly on the HTML element.

This example shows the color as border, it can be applied via the CSS property "border" or "border-color".

```
.border, #border, table{ border:4px solid rgb(198, 74, 125) }
```


If only the border color should be changed use the property `border-color`.

```
.border{ border-color:rgb(198, 74, 125) }
```

If you want to add a box shadow in that color use:

Here you see how a box with a 4 pixel `rgb(198, 74, 125)` colored shadow looks like.

```
.boxshadow{ -moz-box-shadow:4px 4px 4px 4px rgb(198, 74, 125); -webkit-box-shadow:4px 4px 4px 4px rgb(198, 74, 125); box-shadow:4px 4px 4px 4px rgb(198, 74, 125) }
```

Background

The CSS property to change the background color of an element to HunterLab 42.8766, 47.5246, 0.4231 is called "background". The background property can be set on classes, ids or directly on the HTML element.

```
.background, #background, body{  
background: rgb(198, 74, 125) }
```

If only the background color should be changed can be used:

```
.background{ background-color: rgb(198, 74,  
125) }
```

This example shows the color as background, it is applied via the CSS property "background".

To optimize and compress your CSS code, you can use our [online CSS compressor and optimizer](#) based on csstidy. If you want to create a linear or radial gradient as background or border, check our [CSS Gradient Generator](#).

Hey! You found this booklet interesting? Support Converting Colors with the new Membership Option!

The pro membership hides all ads, plus gives you double the colors in the color bucket, and more awesome pro features!

[Learn more, Memberships starting at \\$2.50/m!](#)

**Follow me
on Twitter!**

@ConvertingColor