

Converting Colors

HunterLab(42.8306, 18.0557,
9.4886)

Have a look what the booklet for
HunterLab(42.8306, 18.0557,
9.4886) contains.

HunterLab(42.6953, 18.1160, 9.5285)	3
<i>Conversions</i>	4
<i>Details</i>	6
<i>Harmonies</i>	12
<i>Previews</i>	24
<i>Color Blindness Simulation</i>	28
<i>CSS Examples</i>	31

Color

**HunterLab(42.6953, 18.1160,
9.5285)**

Conversions

Conversions Part 1

Format	Color
Hex	A36665
RGB	163, 102, 101
RGB Percent	64%, 40%, 40%
CMY	0.3608, 0.6000, 0.6039
CMYK	0.00, 0.37, 0.38, 0.36
HSL	1°, 25%, 52%
HSV	1°, 38%, 64%
XYZ	22.2046, 18.2289, 14.6601
YIQ	120.1250, 36.6770, 12.6210

Conversions

Conversions Part 2

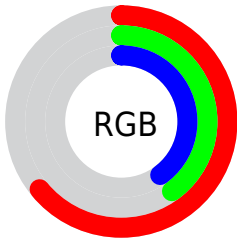
Format	Color
R_{YB}	163, 102, 101
Decimal	10708581
CIE _{Lab}	49.77, 24.44, 10.89
CIE _{LCh}	50, 26.757, 24.026
Yxy	18.2298, 0.4030, 0.3309
Android (android.graphics.Color)	4288898661 (0xFFA36665)
YUV	120.1250, -9.4286, 37.6014
Hunter-Lab	42.6953, 18.1160, 9.5285

Details

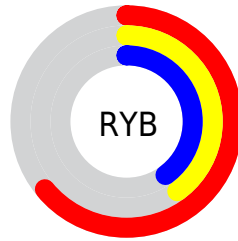
The HunterLab color **42.6953, 18.1160, 9.5285** is a dark color, and the websafe version is hex **996666**. A complement of this color would be **55.9021, -18.3290, -2.6246**, and the grayscale version is **43.4131, -2.3164, 2.3587**.

A 20% lighter version of the original color is **63.7133, 19.4443, 11.9568**, and **24.8111, 16.2342, 7.2327** is the 20% darker color. If you saturate the color by 10%, you get **38.8435, 24.1946, 11.3355**, and if you desaturate by 10%, it is **46.9515, 12.1806, 7.7749**.

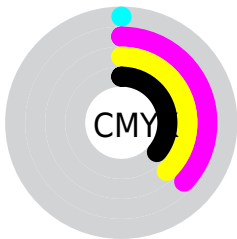
Distribution



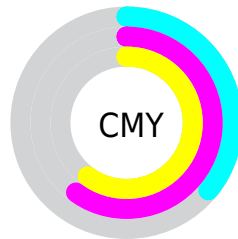
- Red (64%)
- Green (40%)
- Blue (40%)



- Red (64%)
- Yellow (40%)
- Blue (40%)



- Cyan (0%)
- Magenta (37%)
- Yellow (38%)
- Black (36%)



- Cyan (36%)
- Magenta (60%)
- Yellow (60%)

Brightness & Saturation Gradients

These gradients show how the HunterLab color 42.6953, 18.1160, 9.5285 changes by changing the brightness by 10 percent. The first figure shows a shift by +10% for each color and the second figure -10%.

Similar to the brightness gradients but the following saturation gradients show a change of the HunterLab color 42.6953, 18.1160, 9.5285 by changing the saturation by 10% instead.

42.6953, 18.1160,
9.5285

42.6953, 18.1160,
9.5285

155.6159, 21.5795,
20.2065

33.3393, 17.2828,
8.3324

63.5834, 19.4417,
11.8807

24.7877, 16.3193,
7.1035

75.0208, 19.9628,
13.0509

17.1261, 15.2061,
5.8169

87.0721, 20.4015,
14.2236

10.4731, 13.9361,
4.9736

99.7074, 20.7651,
15.4019

0.0000, INF, NaN

0.0000, NaN, NaN

112.9009, 21.0599,
16.5879

0.0000, NaN, NaN

126.6299, 21.2910,

0.0000, NaN, NaN

17.7833

0.0000, NaN, NaN

140.8742, 21.4629,
18.9892

■ 42.6953, 18.1160,
9.5285

■ 42.6953, 18.1160,
9.5285

■ 38.8435, 24.1946,
11.3355

■ 46.9515, 12.1806,
7.7749

■ 35.4692, 30.2550,
13.1364

■ 51.5442, 6.4694,
6.0986

■ 32.6559, 35.9983,
14.8324

■ 56.4217, 0.9990,
4.5072

■ 30.4795, 40.9976,
16.2833

■ 61.5416, -4.2409,
2.9978

■ 28.9869, 44.7809,
17.3390

■ 66.8704, -9.2737,
1.5627

■ 28.1411, 47.0699,
17.9708

■ 72.3811, -14.1266,
0.1925

■ 28.0068, 47.4368,
18.0881

■ 78.0522, -18.8266,
-1.1217

■ 83.8665, -23.3982,
-2.3885

■ 89.8095, -27.8628,
-3.6152

Harmonies

Analogous

The Analogous color harmony consists of three colors that are next to each other on the color wheel.



42.6963, 20.0930, 0.2433



42.6953, 18.1160, 9.5285



42.6963, 10.4478, 15.2907

Triad

The Triadic color harmony groups three colors that are evenly spaced from another and form a triangle on the color wheel.



42.6963, 18.1139, 9.5292



42.6963, -17.6435, 12.2699



42.6963, -4.3941, -21.9906

Complementary

The Complementary color scheme is a pair of colors which are on the opposite of each other on the color wheel.



42.6953, 18.1160, 9.5285



55.9021, -18.3290, -2.6246

Split Complementary

Split-complementary colors differ from the complementary color scheme. The scheme consists of three colors, the original color and two neighbors of the complement color.



42.6963, -13.6728, -16.6726



42.6953, 18.1160, 9.5285



42.6963, -20.8243, 4.3052

Square

The Square scheme is like the rectangle color scheme, but the four colors are evenly spaced on the color wheel.



42.6963, 18.1139, 9.5292



42.6963, -10.3145, 16.5798



42.6963, -19.4451, -6.4074



42.6963, 6.3953, -19.6125

Rectangle

The Rectangle color scheme consists of four colors that form a rectangle on the color wheel.



42.6953, 18.1160, 9.5285



42.6963, 3.5117, 17.1483



42.6963, -19.4451, -6.4074



42.6963, -7.7795, -21.0099

Sweetspot

The Sweet Spot groups the original color and five complimentary colors.



42.6963, 18.1139, 9.5292



73.4014, 3.6214, 6.6942



44.4279, 28.1946, -18.3717



34.3875, 2.1579, 3.3008



90.9709, -4.8540, 4.9426



38.3822, -2.0480, 2.0854

Same Dimension

The Same Dimension uses a secret algorithm to generate beautiful new colors.



42.6963, 18.1139, 9.5292



52.5612, 31.4114, 14.8822



50.2283, 3.4489, 16.4774



26.6523, 0.7927, 2.2440



24.7036, 41.7742, 15.9536



3.6528, 5.8142, 2.3526

Inverse Universe

The Inverse Universe completely reimagines the original color for something new.



55.9021, -18.3290, -2.6246



73.7986, -27.8465, -4.8691



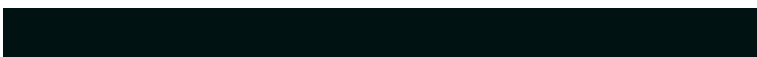
46.8121, -4.7853, -15.1248



28.2692, -3.5899, 0.7811



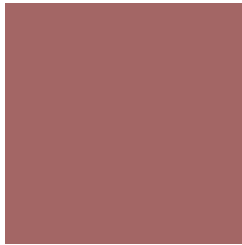
46.5823, -24.1940, -5.9960



6.7949, -3.5577, -0.8128

Previews

White Background



This preview shows how the HunterLab color 42.6953, 18.1160, 9.5285 looks on a white background.

Color Contrast Check

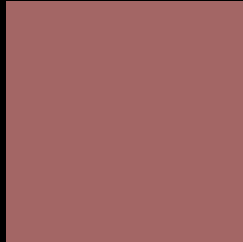
Large Text (above 18pt) WCAG AA ✓ Pass

Any Text WCAG AA ✓ Pass

Large Text (above 18pt) WCAG AAA ✓ Pass

Any Text WCAG AAA × Fail

Black Background



This preview shows how the HunterLab color 42.6953, 18.1160, 9.5285 looks on a black background.

Color Contrast Check

Large Text (above 18pt) WCAG AA ✓ Pass

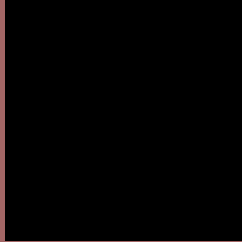
Any Text WCAG AA ✓ Pass

Large Text (above 18pt) WCAG AAA ✓ Pass

Any Text WCAG AAA × Fail

If you want to check with other color combinations, try the [Color Contrast Checker](#).

HunterLab 42.6953, 18.1160, 9.5285 Background



This preview shows how black text looks on a background with the HunterLab color 42.6953, 18.1160, 9.5285.

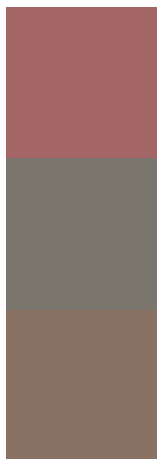


This preview shows how white text looks on a background with the HunterLab color 42.6953, 18.1160,

Color Blindness Simulation

Color vision deficiency is a very complex topic, and I could not describe the different causes any better than Wikipedia does, so if you want to learn more, you should check out their [article about color blindness](#).

Dichromacy



Original Color

42.6953, 18.1160, 9.5285

Protanopia

42.7457, -2.1153, 6.2350

Deuteranopia

42.7245, 2.8830, 9.9959



Tritanopia

42.7581, 19.8137, 7.0215

Trichromacy



Original Color

42.6953, 18.1160, 9.5285

Protanomaly

42.4644, 5.0370, 7.2160

Deuteranomaly

42.6415, 7.9695, 9.6511

Tritanomaly

42.6847, 19.4488, 8.0788

Monochromacy



Original Color

42.6953, 18.1160, 9.5285

Achromatopsia

43.3383, -2.3124, 2.3547

Achromatomaly

42.7045, 4.8484, 4.7089

CSS Examples

Text

The CSS property to change the color of the text to HunterLab 42.6953, 18.1160, 9.5285 is called "color". The color property can be set on classes, ids or directly on the HTML element.

This example shows how text in the color `rgb(163, 102, 101)` looks like.

```
.text, #text, p{  
    color:rgb(163, 102, 101)  
}
```

If you want to add a text shadow in that color use the text-shadow property, you can generate a text shadow directly with our [CSS Text Shadow Generator](#).

Here you see how black text with a 4 pixel rgb(163, 102, 101) colored shadow looks like.

```
.shadow{ text-shadow: 4px 4px 2px rgb(163, 102, 101) }
```

Border

The CSS property to change the border of an element to HunterLab 42.6953, 18.1160, 9.5285 is called "border". The border property can be set on classes, ids or directly on the HTML element.

This example shows the color as border, it can be applied via the CSS property "border" or "border-color".

```
.border, #border, table{ border:4px solid rgb(163, 102, 101) }
```


If only the border color should be changed use the property `border-color`.

```
.border{ border-color:rgb(163, 102, 101) }
```

If you want to add a box shadow in that color use:

Here you see how a box with a 4 pixel `rgb(163, 102, 101)` colored shadow looks like.

```
.boxshadow{ -moz-box-shadow:4px 4px 4px  
4px rgb(163, 102, 101); -webkit-box-  
shadow:4px 4px 4px 4px rgb(163, 102, 101);  
box-shadow:4px 4px 4px 4px rgb(163, 102,  
101) }
```

Background

The CSS property to change the background color of an element to HunterLab 42.6953, 18.1160, 9.5285 is called "background". The background property can be set on classes, ids or directly on the HTML element.

```
.background, #background, body{  
background: rgb(163, 102, 101) }
```

If only the background color should be changed can be used:

```
.background{ background-color: rgb(163,  
102, 101) }
```

This example shows the color as background, it is applied via the CSS property "background".

To optimize and compress your CSS code, you can use our [online CSS compressor and optimizer](#) based on csstidy. If you want to create a linear or radial gradient as background or border, check our [CSS Gradient Generator](#).

Hey! You found this booklet interesting? Support Converting Colors with the new Membership Option!

The pro membership hides all ads, plus gives you double the colors in the color bucket, and more awesome pro features!

[Learn more, Memberships starting at \\$2.50/m!](#)

**Follow me
on Twitter!**

@ConvertingColor