

Converting Colors

HunterLab(42.8731, 6.3861,
14.7594)

Have a look what the booklet for
HunterLab(42.8731, 6.3861,
14.7594) contains.

HunterLab(42.8026, 6.5701, 14.5850)	3
<i>Conversions</i>	4
<i>Details</i>	6
<i>Harmonies</i>	12
<i>Previews</i>	24
<i>Color Blindness Simulation</i>	28
<i>CSS Examples</i>	31

Color

**HunterLab(42.8026, 6.5701,
14.5850)**

Conversions

Conversions Part 1

Format	Color
Hex	946F55
RGB	148, 111, 85
RGB Percent	58%, 44%, 33%
CMY	0.4196, 0.5647, 0.6667
CMYK	0.00, 0.25, 0.43, 0.42
HSL	25°, 27%, 46%
HSV	25°, 43%, 58%
XYZ	19.5368, 18.3206, 11.1008
YIQ	119.0990, 30.3980, -0.2420

Conversions

Conversions Part 2

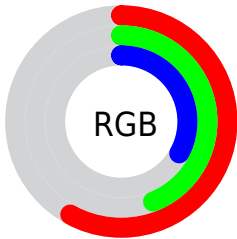
Format	Color
R_{YB}	148, 129, 85
Decimal	9727829
CIE _{Lab}	49.88, 11.10, 20.16
CIE _{LCh}	50, 23.015, 61.158
Yxy	18.3215, 0.3990, 0.3742
Android (android.graphics.Color)	4287917909 (0xFF946F55)
YUV	119.0990, -16.8108, 25.3462
Hunter-Lab	42.8026, 6.5701, 14.5850

Details

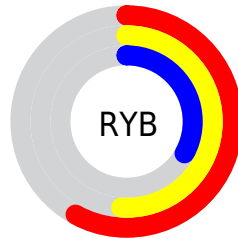
The HunterLab color **42.8026, 6.5701, 14.5850** is a dark color, and the websafe version is hex **996666**. A complement of this color would be **42.4120, -6.6675, -13.1490**, and the grayscale version is **43.0445, -2.2967, 2.3387**.

A 20% lighter version of the original color is **63.7496, 6.3159, 18.0746**, and **24.7677, 6.1181, 10.7740** is the 20% darker color. If you saturate the color by 10%, you get **40.3794, 9.3782, 16.4889**, and if you desaturate by 10%, it is **45.3562, 3.9934, 12.3237**.

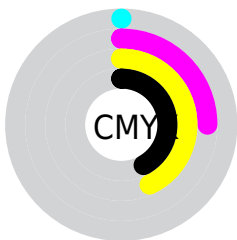
Distribution



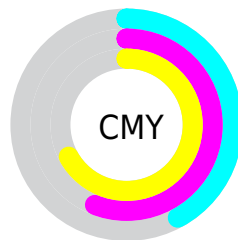
- Red (58%)
- Green (44%)
- Blue (33%)



- Red (58%)
- Yellow (51%)
- Blue (33%)



- Cyan (0%)
- Magenta (25%)
- Yellow (43%)
- Black (42%)



- Cyan (42%)
- Magenta (56%)
- Yellow (67%)

Brightness & Saturation Gradients

These gradients show how the HunterLab color 42.8026, 6.5701, 14.5850 changes by changing the brightness by 10 percent. The first figure shows a shift by +10% for each color and the second figure -10%.

Similar to the brightness gradients but the following saturation gradients show a change of the HunterLab color 42.8026, 6.5701, 14.5850 by changing the saturation by 10% instead.

42.8026, 6.5701,
14.5850

42.8026, 6.5701,
14.5850

155.7809, 4.9983,
29.4548

33.4381, 6.4253,
12.7326

63.7059, 6.6163,
18.0821

24.8772, 6.1855,
10.7689

75.1503, 6.5395,
19.7628

17.2052, 5.8287,
8.6406

87.2081, 6.4043,
21.4143

10.5403, 5.3244,
7.3782

99.8497, 6.2156,
23.0445

0.0000, INF, NaN

0.0000, NaN, NaN

113.0492, 5.9775,
24.6595

0.0000, NaN, NaN

126.7840, 5.6934,

0.0000, NaN, NaN

26.2640

0.0000, NaN, NaN

141.0339, 5.3662,
27.8614

■ 42.8026, 6.5701,
14.5850

■ 42.8026, 6.5701,
14.5850

■ 40.3794, 9.3782,
16.4889

■ 45.3562, 3.9934,
12.3237

■ 38.0970, 12.4250,
17.9889

■ 48.0248, 1.6441,
9.7455

■ 35.9711, 15.6984,
19.0422

■ 50.7986, -0.4933,
6.8893

■ 34.0168, 19.1705,
19.6135

■ 53.6677, -2.4349,
3.7884

■ 32.2487, 22.7887,
19.6883

■ 56.6238, -4.1969,
0.4721

■ 31.0527, 25.4793,
19.5806

■ 59.6593, -5.7956,
-3.0351

■ 62.7677, -7.2462,
-6.7120

■ 65.9434, -8.5628,
-10.5406

■ 69.1813, -9.7585,
-14.5059

Harmonies

Analogous

The Analogous color harmony consists of three colors that are next to each other on the color wheel.



42.8036, 13.8949, 10.1409



42.8026, 6.5701, 14.5850



42.8036, -2.6425, 15.9503

Triad

The Triadic color harmony groups three colors that are evenly spaced from another and form a triangle on the color wheel.



42.8036, 6.5683, 14.5856



42.8036, -18.5469, 1.9891



42.8036, 7.2375, -14.6788

Complementary

The Complementary color scheme is a pair of colors which are on the opposite of each other on the color wheel.



42.8026, 6.5701, 14.5850



42.4120, -6.6675, -13.1490

Split Complementary

Split-complementary colors differ from the complementary color scheme. The scheme consists of three colors, the original color and two neighbors of the complement color.



42.8036, -1.9287, -18.0935



42.8026, 6.5701, 14.5850



42.8036, -16.3716, -7.3030

Square

The Square scheme is like the rectangle color scheme, but the four colors are evenly spaced on the color wheel.



42.8036, 6.5683, 14.5856



42.8036, -16.6801, 9.6660



42.8036, -10.4747, -15.1478



42.8036, 14.3036, -6.5899

Rectangle

The Rectangle color scheme consists of four colors that form a rectangle on the color wheel.



42.8026, 6.5701, 14.5850



42.8036, -8.4744, 15.2202



42.8036, -10.4747, -15.1478



42.8036, 4.2749, -16.4795

Sweetspot

The Sweet Spot groups the original color and five complimentary colors.



42.8036, 6.5683, 14.5856



67.2177, -0.4673, 9.4249



37.7069, 24.0701, -5.7057



31.7519, 0.0451, 4.8843



86.5109, -4.6160, 4.7003



34.5370, -1.8428, 1.8765

Same Dimension

The Same Dimension uses a secret algorithm to generate beautiful new colors.



42.8036, 6.5683, 14.5856



53.8090, 12.2443, 21.7773



51.1943, -7.7191, 21.4570



24.8699, -0.5611, 2.8216



28.7885, 23.3222, 18.1476



3.9650, 0.8663, 2.4584

Inverse Universe

The Inverse Universe completely reimagines the original color for something new.



42.4120, -6.6675, -13.1490



53.1672, -8.8293, -22.5208



34.0634, 7.7707, -27.6399



24.8291, -2.0024, -0.1847



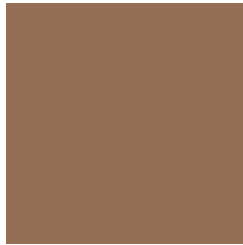
27.7326, -0.2708, -34.0787



3.9036, -1.3031, -2.0661

Previews

White Background



This preview shows how the HunterLab color 42.8026, 6.5701, 14.5850 looks on a white background.

Color Contrast Check

Large Text (above 18pt) WCAG AA ✓ Pass

Any Text WCAG AA ✓ Pass

Large Text (above 18pt) WCAG AAA ✓ Pass

Any Text WCAG AAA × Fail

Black Background



This preview shows how the HunterLab color 42.8026, 6.5701, 14.5850 looks on a black background.

Color Contrast Check

Large Text (above 18pt) WCAG AA ✓ Pass

Any Text WCAG AA ✓ Pass

Large Text (above 18pt) WCAG AAA ✓ Pass

Any Text WCAG AAA × Fail

If you want to check with other color combinations, try the [Color Contrast Checker](#).

HunterLab 42.8026, 6.5701, 14.5850 Background



This preview shows how black text looks on a background with the HunterLab color 42.8026, 6.5701, 14.5850.



This preview shows how white text looks on a background with the HunterLab color 42.8026, 6.5701,

Color Blindness Simulation

Color vision deficiency is a very complex topic, and I could not describe the different causes any better than Wikipedia does, so if you want to learn more, you should check out their [article about color blindness](#).

Dichromacy



Original Color

42.8026, 6.5701, 14.5850

Protanopia

42.9072, -3.9047, 13.6132

Deuteranopia

42.8222, 2.6018, 14.8194



Tritanopia

42.8165, 13.0975, 4.1525

Trichromacy



Original Color

42.8026, 6.5701, 14.5850

Protanomaly

42.8133, -0.0543, 13.8935

Deuteranomaly

42.8715, 4.1124, 14.8895

Tritanomaly

42.6716, 10.8231, 8.2863

Monochromacy



Original Color

42.8026, 6.5701, 14.5850

Achromatopsia

42.9506, -2.2917, 2.3336

Achromatomaly

42.7763, 0.6918, 7.0909

CSS Examples

Text

The CSS property to change the color of the text to HunterLab 42.8026, 6.5701, 14.5850 is called "color". The color property can be set on classes, ids or directly on the HTML element.

This example shows how text in the color `rgb(148, 111, 85)` looks like.

```
.text, #text, p{  
    color:rgb(148, 111, 85)  
}
```

If you want to add a text shadow in that color use the text-shadow property, you can generate a text shadow directly with our [CSS Text Shadow Generator](#).

Here you see how black text with a 4 pixel rgb(148, 111, 85) colored shadow looks like.

```
.shadow{ text-shadow: 4px 4px 2px rgb(148, 111, 85) }
```

Border

The CSS property to change the border of an element to HunterLab 42.8026, 6.5701, 14.5850 is called "border". The border property can be set on classes, ids or directly on the HTML element.

This example shows the color as border, it can be applied via the CSS property "border" or "border-color".

```
.border, #border, table{ border:4px solid rgb(148, 111, 85) }
```


If only the border color should be changed use the property `border-color`.

```
.border{ border-color:rgb(148, 111, 85) }
```

If you want to add a box shadow in that color use:

Here you see how a box with a 4 pixel `rgb(148, 111, 85)` colored shadow looks like.

```
.boxshadow{ -moz-box-shadow:4px 4px 4px  
4px rgb(148, 111, 85); -webkit-box-  
shadow:4px 4px 4px 4px rgb(148, 111, 85);  
box-shadow:4px 4px 4px 4px rgb(148, 111,  
85) }
```

Background

The CSS property to change the background color of an element to HunterLab 42.8026, 6.5701, 14.5850 is called "background". The background property can be set on classes, ids or directly on the HTML element.

```
.background, #background, body{  
background: rgb(148, 111, 85) }
```

If only the background color should be changed can be used:

```
.background{ background-color: rgb(148,  
111, 85) }
```

This example shows the color as background, it is applied via the CSS property "background".

To optimize and compress your CSS code, you can use our [online CSS compressor and optimizer](#) based on csstidy. If you want to create a linear or radial gradient as background or border, check our [CSS Gradient Generator](#).

Hey! You found this booklet interesting? Support Converting Colors with the new Membership Option!

The pro membership hides all ads, plus gives you double the colors in the color bucket, and more awesome pro features!

[Learn more, Memberships starting at \\$2.50/m!](#)

**Follow me
on Twitter!**

@ConvertingColor