

Converting Colors

HunterLab(42.8888, 54.8767,
-0.1054)

Have a look what the booklet for
HunterLab(42.8888, 54.8767,
-0.1054) contains.

HunterLab(42.7726, 54.7388, -0.0465)	3
<i>Conversions</i>	4
<i>Details</i>	6
<i>Harmonies</i>	12
<i>Previews</i>	24
<i>Color Blindness Simulation</i>	28
<i>CSS Examples</i>	31

Color

**HunterLab(42.7726, 54.7388,
-0.0465)**

Conversions

Conversions Part 1

Format	Color
Hex	CE407E
RGB	206, 64, 126
RGB Percent	81%, 25%, 49%
CMY	0.1922, 0.7490, 0.5059
CMYK	0.00, 0.69, 0.39, 0.19
HSL	334°, 59%, 53%
HSV	334°, 69%, 81%
XYZ	31.0529, 18.2950, 21.6333
YIQ	113.5260, 64.7300, 49.3860

Conversions

Conversions Part 2

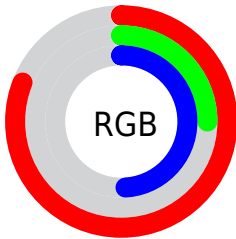
Format	Color
R_{YB}	206, 64, 126
Decimal	13516926
CIE Lab	49.85, 60.52, -3.16
CIE LCh	50, 60.604, 357.007
Yxy	18.2959, 0.4375, 0.2578
Android (android.graphics.Color)	4291707006 (0xFFCE407E)
YUV	113.5260, 6.1497, 81.0997
Hunter-Lab	42.7726, 54.7388, -0.0465

Details

The HunterLab color **42.7726, 54.7388, -0.0465** is a dark color, and the websafe version is hex **CC3366**. The color can be described as dark muted rose. A complement of this color would be **68.7362, -44.4052, 18.8153**, and the grayscale version is **40.7997, -2.1770, 2.2167**.

A 20% lighter version of the original color is **61.7976, 54.2264, -1.8886**, and **25.9593, 46.5202, 0.7744** is the 20% darker color. If you saturate the color by 10%, you get **40.1289, 60.5153, 2.0916**, and if you desaturate by 10%, it is **46.2396, 47.3610, -1.3182**.

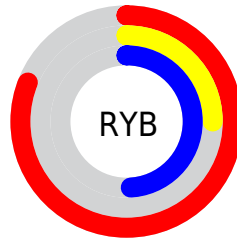
Distribution



Red (81%)

Green (25%)

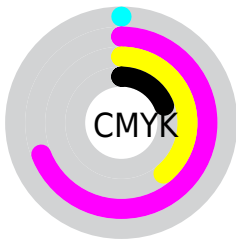
Blue (49%)



Red (81%)

Yellow (25%)

Blue (49%)

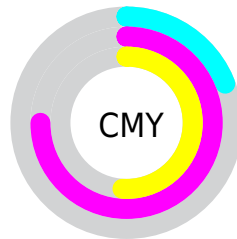


Cyan (0%)

Magenta (69%)

Yellow (39%)

Black (19%)



Cyan (19%)

Magenta (75%)

Yellow (51%)

Brightness & Saturation Gradients

These gradients show how the HunterLab color 42.7726, 54.7388, -0.0465 changes by changing the brightness by 10 percent. The first figure shows a shift by +10% for each color and the second figure -10%.

Similar to the brightness gradients but the following saturation gradients show a change of the HunterLab color 42.7726, 54.7388, -0.0465 by changing the saturation by 10% instead.

42.7726, 54.7388,
-0.0465

42.7726, 54.7388,
-0.0465

155.7350, 69.7201,
4.8834

33.4106, 52.6127,
-0.3782

63.6718, 58.7414,
0.7730

24.8523, 50.4785,
-0.6518

75.1142, 60.5954,
1.2497

17.1832, 48.4978,
-0.8568

87.1703, 62.3478,
1.7669

10.5216, 47.1786,
-0.9789

99.8101, 64.0016,
2.3220

0.0000, INF, -NF

0.0000, INF, NaN

113.0079, 65.5611,
2.9130

0.0000, NaN, NaN

126.7411, 67.0310,

0.0000, NaN, NaN

3.5379

0.0000, NaN, NaN

140.9894, 68.4158,
4.1952

■ 42.7726, 54.7388,
-0.0465

■ 42.7726, 54.7388,
-0.0465

■ 40.1289, 60.5153,
2.0916

■ 46.2396, 47.3610,
-1.3182

■ 38.3432, 64.1501,
4.9942

■ 50.4423, 39.0068,
-1.7608

■ 37.3205, 65.6146,
8.3562

■ 55.2824, 30.1734,
-1.4800

■ 37.2276, 65.7333,
8.7072

■ 60.6636, 21.1967,
-0.6040

■ 66.5015, 12.2710,
0.7472

■ 72.7257, 3.4919,
2.4740

■ 79.2795, -5.1046,
4.4977

■ 86.1169, -13.5156,
6.7585

■ 93.2014, -21.7545,
9.2111

Harmonies

Analogous

The Analogous color harmony consists of three colors that are next to each other on the color wheel.



42.7738, 44.1005, -29.4262



42.7726, 54.7388, -0.0465



42.7738, 47.5065, 17.9339

Triad

The Triadic color harmony groups three colors that are evenly spaced from another and form a triangle on the color wheel.



42.7738, 54.7354, -0.0453



42.7738, -21.4120, 25.9587



42.7738, -24.7672, -53.8401

Complementary

The Complementary color scheme is a pair of colors which are on the opposite of each other on the color wheel.



42.7726, 54.7388, -0.0465



68.7362, -44.4052, 18.8153

Split Complementary

Split-complementary colors differ from the complementary color scheme. The scheme consists of three colors, the original color and two neighbors of the complement color.



42.7738, -36.3198, -23.0112



42.7726, 54.7388, -0.0465



42.7738, -34.7064, 20.0859

Square

The Square scheme is like the rectangle color scheme, but the four colors are evenly spaced on the color wheel.



42.7738, 54.7354, -0.0453



42.7738, 0.1695, 27.1301



42.7738, -39.5098, 4.5732



42.7738, -4.6846, -69.5489

Rectangle

The Rectangle color scheme consists of four colors that form a rectangle on the color wheel.



42.7726, 54.7388, -0.0465



42.7738, 34.2510, 23.6869



42.7738, -39.5098, 4.5732



42.7738, -29.5905, -44.2846

Sweetspot

The Sweet Spot groups the original color and five complimentary colors.



42.7738, 54.7354, -0.0453



82.8676, 18.2558, 0.5030



37.2612, 50.4721, -69.0702



37.3682, 9.9134, 0.0010

0.0000, NaN, NaN



46.2646, -2.4686, 2.5136

Same Dimension

The Same Dimension uses a secret algorithm to generate beautiful new colors.



42.7738, 54.7354, -0.0453



49.7834, 79.7608, 4.4413



42.4409, 46.1811, 20.1824



33.6060, 1.8065, 1.1076



29.2449, 51.6989, 6.3694



6.7555, 12.1543, -0.1713

Inverse Universe

The Inverse Universe completely reimagines the original color for something new.



42.7738, 54.7354, -0.0453



49.7834, 79.7608, 4.4413



68.0790, -30.8938, -9.4449



33.6060, 1.8065, 1.1076



29.2449, 51.6989, 6.3694



6.7555, 12.1543, -0.1713

Previews

White Background



This preview shows how the HunterLab color 42.7726, 54.7388, -0.0465 looks on a white background.

Color Contrast Check

Large Text (above 18pt) WCAG AA ✓ Pass

Any Text WCAG AA ✓ Pass

Large Text (above 18pt) WCAG AAA ✓ Pass

Any Text WCAG AAA × Fail

Black Background



This preview shows how the HunterLab color 42.7726, 54.7388, -0.0465 looks on a black background.

Color Contrast Check

Large Text (above 18pt) WCAG AA ✓ Pass

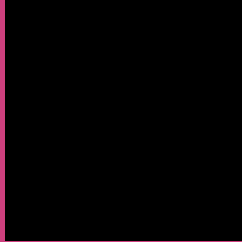
Any Text WCAG AA ✓ Pass

Large Text (above 18pt) WCAG AAA ✓ Pass

Any Text WCAG AAA × Fail

If you want to check with other color combinations, try the [Color Contrast Checker](#).

HunterLab 42.7726, 54.7388, -0.0465 Background



This preview shows how black text looks on a background with the HunterLab color 42.7726, 54.7388, -0.0465.



This preview shows how white text looks on a background with the HunterLab color 42.7726, 54.7388, -0.0465.

-0.0465.

Color Blindness Simulation

Color vision deficiency is a very complex topic, and I could not describe the different causes any better than Wikipedia does, so if you want to learn more, you should check out their [article about color blindness](#).

Dichromacy



Original Color

42.7726, 54.7388, -0.0465

Protanopia

43.1517, 2.6118, -19.0601

Deuteranopia

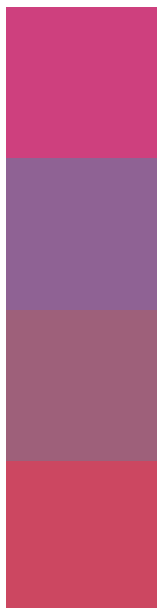
42.9170, 3.1737, 2.3897



Tritanopia

42.7877, 44.4033, 16.6264

Trichromacy



Original Color

42.7726, 54.7388, -0.0465

Protanomaly

40.8817, 20.3260, -15.0856

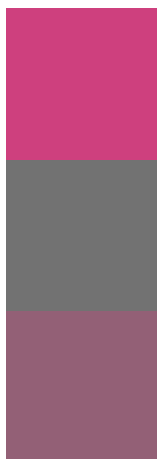
Deuteranomaly

41.2795, 22.0118, -0.6242

Tritanomaly

42.6696, 47.9526, 11.4179

Monochromacy



Original Color

42.7726, 54.7388, -0.0465

Achromatopsia

41.0207, -2.1888, 2.2287

Achromatomaly

39.8457, 17.5609, -0.6433

CSS Examples

Text

The CSS property to change the color of the text to HunterLab 42.7726, 54.7388, -0.0465 is called "color". The color property can be set on classes, ids or directly on the HTML element.

This example shows how text in the color `rgb(206, 64, 126)` looks like.

```
.text, #text, p{  
    color:rgb(206, 64, 126)  
}
```

If you want to add a text shadow in that color use the text-shadow property, you can generate a text shadow directly with our [CSS Text Shadow Generator](#).

Here you see how black text with a 4 pixel rgb(206, 64, 126) colored shadow looks like.

```
.shadow{ text-shadow: 4px 4px 2px rgb(206, 64, 126) }
```

Border

The CSS property to change the border of an element to HunterLab 42.7726, 54.7388, -0.0465 is called "border". The border property can be set on classes, ids or directly on the HTML element.

This example shows the color as border, it can be applied via the CSS property "border" or "border-color".

```
.border, #border, table{ border:4px solid rgb(206, 64, 126) }
```


If only the border color should be changed use the property `border-color`.

```
.border{ border-color:rgb(206, 64, 126) }
```

If you want to add a box shadow in that color use:

Here you see how a box with a 4 pixel `rgb(206, 64, 126)` colored shadow looks like.

```
.boxshadow{ -moz-box-shadow:4px 4px 4px  
4px rgb(206, 64, 126); -webkit-box-  
shadow:4px 4px 4px 4px rgb(206, 64, 126);  
box-shadow:4px 4px 4px 4px rgb(206, 64,  
126) }
```

Background

The CSS property to change the background color of an element to HunterLab 42.7726, 54.7388, -0.0465 is called "background". The background property can be set on classes, ids or directly on the HTML element.

```
.background, #background, body{  
background: rgb(206, 64, 126) }
```

If only the background color should be changed can be used:

```
.background{ background-color: rgb(206, 64,  
126) }
```

This example shows the color as background, it is applied via the CSS property "background".

To optimize and compress your CSS code, you can use our [online CSS compressor and optimizer](#) based on csstidy. If you want to create a linear or radial gradient as background or border, check our [CSS Gradient Generator](#).

Hey! You found this booklet interesting? Support Converting Colors with the new Membership Option!

The pro membership hides all ads, plus gives you double the colors in the color bucket, and more awesome pro features!

[Learn more, Memberships starting at \\$2.50/m!](#)

**Follow me
on Twitter!**

@ConvertingColor