

Converting Colors

HunterLab(42.9182, 47.0068,
0.5693)

Have a look what the booklet for
HunterLab(42.9182, 47.0068,
0.5693) contains.

HunterLab(43.0332, 47.0833, 0.6096)	3
<i>Conversions</i>	4
<i>Details</i>	6
<i>Harmonies</i>	12
<i>Previews</i>	24
<i>Color Blindness Simulation</i>	28
<i>CSS Examples</i>	31

Color

**HunterLab(43.0332, 47.0833,
0.6096)**

Conversions

Conversions Part 1

Format	Color
Hex	C64B7D
RGB	198, 75, 125
RGB Percent	78%, 29%, 49%
CMY	0.2235, 0.7059, 0.5098
CMYK	0.00, 0.62, 0.37, 0.22
HSL	336°, 52%, 54%
HSV	336°, 62%, 78%
XYZ	29.5064, 18.5186, 21.4213
YIQ	117.4770, 57.2580, 41.6260

Conversions

Conversions Part 2

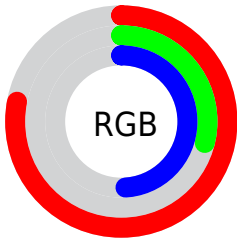
Format	Color
R_{YB}	198, 75, 125
Decimal	12995453
CIE Lab	50.12, 53.56, -2.32
CIE LCh	50, 53.606, 357.518
Yxy	18.5195, 0.4249, 0.2667
Android (android.graphics.Color)	4291185533 (0xFFC64B7D)
YUV	117.4770, 3.7088, 70.6187
Hunter-Lab	43.0332, 47.0833, 0.6096

Details

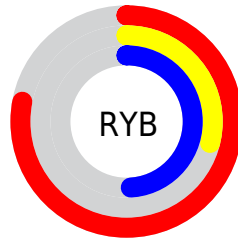
The HunterLab color **43.0332, 47.0833, 0.6096** is a dark color, and the websafe version is hex **CC6699**. The color can be described as dark muted rose. A complement of this color would be **66.3495, -39.5940, 15.1527**, and the grayscale version is **42.3330, -2.2588, 2.3000**.

A 20% lighter version of the original color is **63.5607, 49.2892, 1.2285**, and **25.0851, 43.0374, 0.0500** is the 20% darker color. If you saturate the color by 10%, you get **39.9446, 53.6981, 2.2557**, and if you desaturate by 10%, it is **46.8556, 39.3800, -0.2681**.

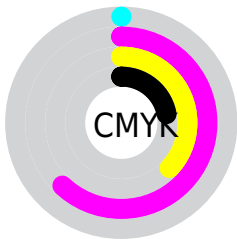
Distribution



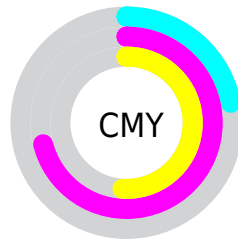
- Red (78%)
- Green (29%)
- Blue (49%)



- Red (78%)
- Yellow (29%)
- Blue (49%)



- Cyan (0%)
- Magenta (62%)
- Yellow (37%)
- Black (22%)



- Cyan (22%)
- Magenta (71%)
- Yellow (51%)

Brightness & Saturation Gradients

These gradients show how the HunterLab color 43.0332, 47.0833, 0.6096 changes by changing the brightness by 10 percent. The first figure shows a shift by +10% for each color and the second figure -10%.

Similar to the brightness gradients but the following saturation gradients show a change of the HunterLab color 43.0332, 47.0833, 0.6096 by changing the saturation by 10% instead.

43.0332, 47.0833,
0.6096

43.0332, 47.0833,
0.6096

156.1356, 60.0740,
5.8688

33.6506, 45.1374,
0.2305

63.9692, 50.6605,
1.5149

25.0698, 43.1292,
-0.0944

75.4285, 52.2891,
2.0309

17.3756, 41.1580,
-0.3558

87.5005, 53.8140,
2.5857

10.6851, 39.5562,
-0.5409

100.1556, 55.2407,
3.1767

1.1540, 217.0653,
-8.2750

113.3680, 56.5748,
3.8021

0.0000, INF, NaN

0.0000, NaN, NaN

127.1151, 57.8217,

4.4602

0.0000, NaN, NaN

141.3770, 58.9865,
5.1495

0.0000, NaN, NaN

■ 43.0332, 47.0833,
0.6096

■ 43.0332, 47.0833,
0.6096

■ 39.9446, 53.6981,
2.2557

■ 46.8556, 39.3800,
-0.2681

■ 37.6580, 58.6433,
4.6456

■ 51.3146, 31.1134,
-0.4491

■ 36.1921, 61.4579,
7.6243

■ 56.3167, 22.6431,
-0.0387

■ 35.4853, 62.4220,
10.1216

■ 61.7772, 14.1862,
0.8531

■ 67.6248, 5.8549,
2.1301

■ 73.8016, -2.3050,
3.7141

■ 80.2609, -10.2846,
5.5441

■ 86.9652, -18.0942,
7.5732

■ 93.8847, -25.7525,
9.7658

Harmonies

Analogous

The Analogous color harmony consists of three colors that are next to each other on the color wheel.



43.0343, 38.2608, -24.4664



43.0332, 47.0833, 0.6096



43.0343, 40.6725, 16.8008

Triad

The Triadic color harmony groups three colors that are evenly spaced from another and form a triangle on the color wheel.



43.0343, 47.0802, 0.6107



43.0343, -19.7272, 24.6197



43.0343, -22.2637, -45.5652

Complementary

The Complementary color scheme is a pair of colors which are on the opposite of each other on the color wheel.



43.0332, 47.0833, 0.6096



66.3495, -39.5940, 15.1527

Split Complementary

Split-complementary colors differ from the complementary color scheme. The scheme consists of three colors, the original color and two neighbors of the complement color.



43.0343, -33.0799, -19.9839



43.0332, 47.0833, 0.6096



43.0343, -31.8294, 18.5217

Square

The Square scheme is like the rectangle color scheme, but the four colors are evenly spaced on the color wheel.



43.0343, 47.0802, 0.6107



43.0343, -0.5000, 25.9830



43.0343, -36.2082, 4.0051



43.0343, -4.0679, -58.0861

Rectangle

The Rectangle color scheme consists of four colors that form a rectangle on the color wheel.



43.0332, 47.0833, 0.6096



43.0343, 29.2090, 22.3809



43.0343, -36.2082, 4.0051



43.0343, -26.7373, -37.7424

Sweetspot

The Sweet Spot groups the original color and five complimentary colors.



43.0343, 47.0802, 0.6107



84.3637, 15.7168, 1.5695



39.1031, 44.3120, -56.1361



38.0086, 8.7704, 0.5204

0.0000, NaN, NaN



46.2646, -2.4686, 2.5136

Same Dimension

The Same Dimension uses a secret algorithm to generate beautiful new colors.



43.0343, 47.0802, 0.6107



51.8038, 74.4041, 4.1646



43.6478, 37.4190, 18.5068



32.7219, 1.7036, 1.1975



28.6443, 50.4414, 7.7570



6.3467, 11.3906, 0.0569

Inverse Universe

The Inverse Universe completely reimagines the original color for something new.



43.0343, 47.0802, 0.6107



51.8038, 74.4041, 4.1646



64.3687, -26.6096, -10.0129



32.7219, 1.7036, 1.1975



28.6443, 50.4414, 7.7570



6.3467, 11.3906, 0.0569

Previews

White Background



This preview shows how the HunterLab color 43.0332, 47.0833, 0.6096 looks on a white background.

Color Contrast Check

Large Text (above 18pt) WCAG AA ✓ Pass

Any Text WCAG AA × Fail

Large Text (above 18pt) WCAG AAA × Fail

Any Text WCAG AAA × Fail

Black Background



This preview shows how the HunterLab color 43.0332, 47.0833, 0.6096 looks on a black background.

Color Contrast Check

Large Text (above 18pt) WCAG AA ✓ Pass

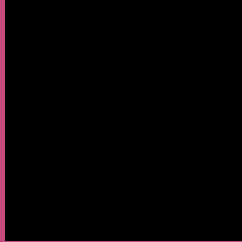
Any Text WCAG AA ✓ Pass

Large Text (above 18pt) WCAG AAA ✓ Pass

Any Text WCAG AAA × Fail

If you want to check with other color combinations, try the [Color Contrast Checker](#).

HunterLab 43.0332, 47.0833, 0.6096 Background



This preview shows how black text looks on a background with the HunterLab color 43.0332, 47.0833, 0.6096.



This preview shows how white text looks on a background with the HunterLab color 43.0332, 47.0833,

0.6096.

Color Blindness Simulation

Color vision deficiency is a very complex topic, and I could not describe the different causes any better than Wikipedia does, so if you want to learn more, you should check out their [article about color blindness](#).

Dichromacy



Original Color

43.0332, 47.0833, 0.6096

Protanopia

43.4431, 1.6400, -14.3320

Deuteranopia

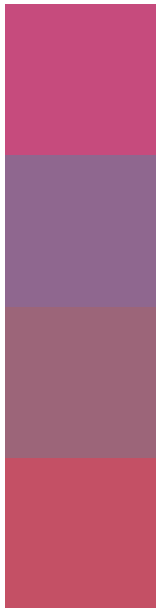
43.2761, 3.0105, 2.8083



Tritanopia

43.0037, 38.3111, 14.4403

Trichromacy



Original Color

43.0332, 47.0833, 0.6096

Protanomaly

41.8608, 16.8695, -10.7166

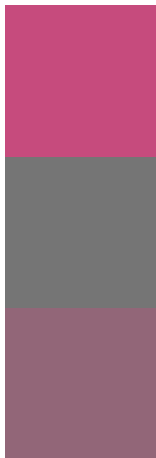
Deuteranomaly

42.1376, 18.6710, 0.8394

Tritanomaly

42.9100, 41.3114, 10.1524

Monochromacy



Original Color

43.0332, 47.0833, 0.6096

Achromatopsia

42.1768, -2.2504, 2.2915

Achromatomaly

41.1944, 14.5529, 0.0637

CSS Examples

Text

The CSS property to change the color of the text to HunterLab 43.0332, 47.0833, 0.6096 is called "color". The color property can be set on classes, ids or directly on the HTML element.

This example shows how text in the color `rgb(198, 75, 125)` looks like.

```
.text, #text, p{  
    color:rgb(198, 75, 125)  
}
```

If you want to add a text shadow in that color use the text-shadow property, you can generate a text shadow directly with our [CSS Text Shadow Generator](#).

Here you see how black text with a 4 pixel rgb(198, 75, 125) colored shadow looks like.

```
.shadow{ text-shadow: 4px 4px 2px rgb(198, 75, 125) }
```

Border

The CSS property to change the border of an element to HunterLab 43.0332, 47.0833, 0.6096 is called "border". The border property can be set on classes, ids or directly on the HTML element.

This example shows the color as border, it can be applied via the CSS property "border" or "border-color".

```
.border, #border, table{ border:4px solid rgb(198, 75, 125) }
```


If only the border color should be changed use the property border-color.

```
.border{ border-color:rgb(198, 75, 125) }
```

If you want to add a box shadow in that color use:

Here you see how a box with a 4 pixel rgb(198, 75, 125) colored shadow looks like.

```
.boxshadow{ -moz-box-shadow:4px 4px 4px  
4px rgb(198, 75, 125); -webkit-box-  
shadow:4px 4px 4px 4px rgb(198, 75, 125);  
box-shadow:4px 4px 4px 4px rgb(198, 75,  
125) }
```

Background

The CSS property to change the background color of an element to HunterLab 43.0332, 47.0833, 0.6096 is called "background". The background property can be set on classes, ids or directly on the HTML element.

```
.background, #background, body{  
background: rgb(198, 75, 125) }
```

If only the background color should be changed can be used:

```
.background{ background-color: rgb(198, 75,  
125) }
```

This example shows the color as background, it is applied via the CSS property "background".

To optimize and compress your CSS code, you can use our [online CSS compressor and optimizer](#) based on csstidy. If you want to create a linear or radial gradient as background or border, check our [CSS Gradient Generator](#).

Hey! You found this booklet interesting? Support Converting Colors with the new Membership Option!

The pro membership hides all ads, plus gives you double the colors in the color bucket, and more awesome pro features!

[Learn more, Memberships starting at \\$2.50/m!](#)

**Follow me
on Twitter!**

@ConvertingColor