

Converting Colors

HunterLab(42.9770, 11.3728,
16.4630)

Have a look what the booklet for
HunterLab(42.9770, 11.3728,
16.4630) contains.

HunterLab(43.0799, 11.1026, 16.5594)	3
<i>Conversions</i>	4
<i>Details</i>	6
<i>Harmonies</i>	12
<i>Previews</i>	24
<i>Color Blindness Simulation</i>	28
<i>CSS Examples</i>	31

Color

**HunterLab(43.0799, 11.1026,
16.5594)**

Conversions

Conversions Part 1

Format	Color
Hex	9E6C4F
RGB	158, 108, 79
RGB Percent	62%, 42%, 31%
CMY	0.3804, 0.5765, 0.6902
CMYK	0.00, 0.32, 0.50, 0.38
HSL	22°, 33%, 46%
HSV	22°, 50%, 62%
XYZ	20.8744, 18.5588, 9.8792
YIQ	119.6440, 39.1090, 1.5810

Conversions

Conversions Part 2

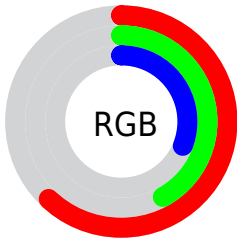
Format	Color
R_{YB}	158, 125, 79
Decimal	10382415
CIE _{Lab}	50.17, 16.46, 24.21
CIE _{LCh}	50, 29.278, 55.786
Yxy	18.5597, 0.4233, 0.3764
Android (android.graphics.Color)	4288572495 (0xFF9E6C4F)
YUV	119.6440, -20.0375, 33.6382
Hunter-Lab	43.0799, 11.1026, 16.5594

Details

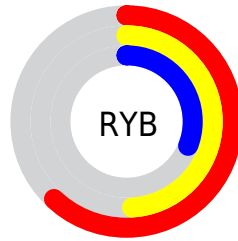
The HunterLab color **43.0799, 11.1026, 16.5594** is a dark color, and the websafe version is hex **996633**. A complement of this color would be **44.5315, -8.8017, -15.7822**, and the grayscale version is **43.2656, -2.3085, 2.3507**.

A 20% lighter version of the original color is **64.1667, 11.6593, 20.5529**, and **25.0804, 10.2955, 12.0571** is the 20% darker color. If you saturate the color by 10%, you get **40.4556, 14.6746, 18.2502**, and if you desaturate by 10%, it is **45.8797, 7.7782, 14.4771**.

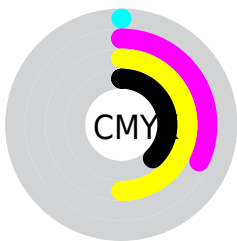
Distribution



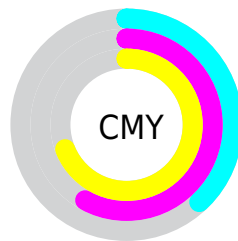
- Red (62%)
- Green (42%)
- Blue (31%)



- Red (62%)
- Yellow (49%)
- Blue (31%)



- Cyan (0%)
- Magenta (32%)
- Yellow (50%)
- Black (38%)



- Cyan (38%)
- Magenta (58%)
- Yellow (69%)

Brightness & Saturation Gradients

These gradients show how the HunterLab color 43.0799, 11.1026, 16.5594 changes by changing the brightness by 10 percent. The first figure shows a shift by +10% for each color and the second figure -10%.

Similar to the brightness gradients but the following saturation gradients show a change of the HunterLab color 43.0799, 11.1026, 16.5594 by changing the saturation by 10% instead.

■ 43.0799, 11.1026,
16.5594

■ 43.0799, 11.1026,
16.5594

156.2073, 11.5808,
33.3330

■ 33.6936, 10.6726,
14.4094

■ 64.0225, 11.6738,
20.5774

■ 25.1087, 10.1300,
12.1149

■ 75.4847, 11.8410,
22.4904

■ 17.4101, 9.4507,
9.6725

■ 87.5596, 11.9395,
24.3596

■ 10.7144, 8.6055,
7.5001

■ 100.2174, 11.9752,
26.1952

■ 1.3639, 52.5235,
0.9547

■ 113.4324, 11.9533,
28.0049

0.0000, NaN, NaN

0.0000, NaN, NaN

127.1820, 11.8779,

29.7948

0.0000, NaN, NaN

141.4463, 11.7528,
31.5696

0.0000, NaN, NaN

■ 43.0799, 11.1026,
16.5594

■ 43.0799, 11.1026,
16.5594

■ 40.4556, 14.6746,
18.2502

■ 45.8797, 7.7782,
14.4771

■ 38.0237, 18.4841,
19.4937

■ 48.8335, 4.7075,
12.0537

■ 35.8064, 22.4887,
20.2414

■ 51.9263, 1.8784,
9.3365

■ 33.8246, 26.6152,
20.4628

■ 55.1438, -0.7247,
6.3661

■ 32.0874, 30.7065,
20.3096

■ 58.4737, -3.1202,
3.1767

■ 32.0873, 30.7069,
20.3096

■ 61.9052, -5.3269,
-0.2030

■ 65.4292, -7.3631,
-3.7492

■ 69.0377, -9.2463,
-7.4421

■ 72.7237, -10.9921,
-11.2654

Harmonies

Analogous

The Analogous color harmony consists of three colors that are next to each other on the color wheel.



43.0810, 19.8984, 10.6585



43.0799, 11.1026, 16.5594



43.0810, -0.6343, 18.7004

Triad

The Triadic color harmony groups three colors that are evenly spaced from another and form a triangle on the color wheel.



43.0810, 11.1005, 16.5600



43.0810, -22.5298, 3.8891



43.0810, 7.9345, -21.7342

Complementary

The Complementary color scheme is a pair of colors which are on the opposite of each other on the color wheel.



43.0799, 11.1026, 16.5594



44.5315, -8.8017, -15.7822

Split Complementary

Split-complementary colors differ from the complementary color scheme. The scheme consists of three colors, the original color and two neighbors of the complement color.



43.0810, -3.9427, -24.9417



43.0799, 11.1026, 16.5594



43.0810, -20.7534, -8.0482

Square

The Square scheme is like the rectangle color scheme, but the four colors are evenly spaced on the color wheel.



43.0810, 11.1005, 16.5600



43.0810, -19.3796, 12.7313



43.0810, -14.2413, -19.3857



43.0810, 17.9379, -11.5162

Rectangle

The Rectangle color scheme consists of four colors that form a rectangle on the color wheel.



43.0799, 11.1026, 16.5594



43.0810, -8.2551, 18.2804



43.0810, -14.2413, -19.3857



43.0810, 3.9951, -23.7676

Sweetspot

The Sweet Spot groups the original color and five complimentary colors.



43.0810, 11.1005, 16.5600



71.9961, 0.8440, 10.7375



38.0094, 31.4526, -8.4434



33.7777, 0.7351, 5.4722



89.8524, -4.7943, 4.8819



37.4146, -1.9963, 2.0328

Same Dimension

The Same Dimension uses a secret algorithm to generate beautiful new colors.



43.0810, 11.1005, 16.5600



54.1191, 20.3619, 24.8229



53.7089, -7.5196, 24.7975



26.5049, -0.4363, 2.9349



28.8376, 27.1561, 18.2450



4.7543, 1.5503, 2.9567

Inverse Universe

The Inverse Universe completely reimagines the original color for something new.



44.5315, -8.8017, -15.7822



56.4024, -11.6887, -27.2007



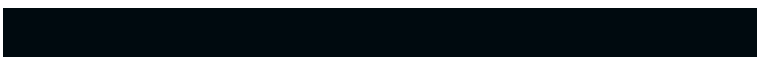
33.7120, 9.9066, -35.9439



26.6451, -2.3009, -0.1029



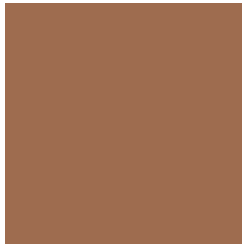
30.5819, -3.1440, -31.4377



4.9553, -1.7023, -2.5189

Previews

White Background



This preview shows how the HunterLab color 43.0799, 11.1026, 16.5594 looks on a white background.

Color Contrast Check

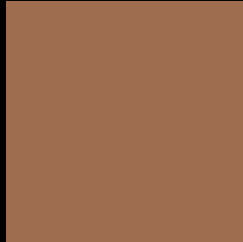
Large Text (above 18pt) WCAG AA ✓ Pass

Any Text WCAG AA × Fail

Large Text (above 18pt) WCAG AAA × Fail

Any Text WCAG AAA × Fail

Black Background



This preview shows how the HunterLab color 43.0799, 11.1026, 16.5594 looks on a black background.

Color Contrast Check

Large Text (above 18pt) WCAG AA ✓ Pass

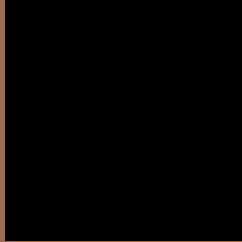
Any Text WCAG AA ✓ Pass

Large Text (above 18pt) WCAG AAA ✓ Pass

Any Text WCAG AAA × Fail

If you want to check with other color combinations, try the [Color Contrast Checker](#).

HunterLab 43.0799, 11.1026, 16.5594 Background



This preview shows how black text looks on a background with the HunterLab color 43.0799, 11.1026, 16.5594.



This preview shows how white text looks on a background with the HunterLab color 43.0799, 11.1026,

Color Blindness Simulation

Color vision deficiency is a very complex topic, and I could not describe the different causes any better than Wikipedia does, so if you want to learn more, you should check out their [article about color blindness](#).

Dichromacy



Original Color

43.0799, 11.1026, 16.5594

Protanopia

43.2899, -4.1347, 15.1151

Deuteranopia

43.0279, 3.0827, 16.6357



Tritanopia

43.1828, 17.7371, 5.8725

Trichromacy



Original Color

43.0799, 11.1026, 16.5594

Protanomaly

43.2151, 1.1332, 15.6968

Deuteranomaly

43.0441, 5.8018, 16.6971

Tritanomaly

43.0079, 15.4182, 10.1502

Monochromacy



Original Color

43.0799, 11.1026, 16.5594

Achromatopsia

43.3383, -2.3124, 2.3547

Achromatomaly

43.1034, 1.7060, 8.2066

CSS Examples

Text

The CSS property to change the color of the text to HunterLab 43.0799, 11.1026, 16.5594 is called "color". The color property can be set on classes, ids or directly on the HTML element.

This example shows how text in the color `rgb(158, 108, 79)` looks like.

```
.text, #text, p{  
    color:rgb(158, 108, 79)  
}
```

If you want to add a text shadow in that color use the text-shadow property, you can generate a text shadow directly with our [CSS Text Shadow Generator](#).

Here you see how black text with a 4 pixel rgb(158, 108, 79) colored shadow looks like.

```
.shadow{ text-shadow: 4px 4px 2px rgb(158, 108, 79) }
```

Border

The CSS property to change the border of an element to HunterLab 43.0799, 11.1026, 16.5594 is called "border". The border property can be set on classes, ids or directly on the HTML element.

This example shows the color as border, it can be applied via the CSS property "border" or "border-color".

```
.border, #border, table{ border:4px solid rgb(158, 108, 79) }
```


If only the border color should be changed use the property `border-color`.

```
.border{ border-color:rgb(158, 108, 79) }
```

If you want to add a box shadow in that color use:

Here you see how a box with a 4 pixel `rgb(158, 108, 79)` colored shadow looks like.

```
.boxshadow{ -moz-box-shadow:4px 4px 4px  
4px rgb(158, 108, 79); -webkit-box-  
shadow:4px 4px 4px 4px rgb(158, 108, 79);  
box-shadow:4px 4px 4px 4px rgb(158, 108,  
79) }
```

Background

The CSS property to change the background color of an element to HunterLab 43.0799, 11.1026, 16.5594 is called "background". The background property can be set on classes, ids or directly on the HTML element.

```
.background, #background, body{  
background: rgb(158, 108, 79) }
```

If only the background color should be changed can be used:

```
.background{ background-color: rgb(158,  
108, 79) }
```

This example shows the color as background, it is applied via the CSS property "background".

To optimize and compress your CSS code, you can use our [online CSS compressor and optimizer](#) based on csstidy. If you want to create a linear or radial gradient as background or border, check our [CSS Gradient Generator](#).

Hey! You found this booklet interesting? Support Converting Colors with the new Membership Option!

The pro membership hides all ads, plus gives you double the colors in the color bucket, and more awesome pro features!

[Learn more, Memberships starting at \\$2.50/m!](#)

**Follow me
on Twitter!**

@ConvertingColor