

Converting Colors

HunterLab(43.2615, 68.6799,
8.7963)

Have a look what the booklet for
HunterLab(43.2615, 68.6799,
8.7963) contains.

HunterLab(43.2615, 68.6800, 8.7963)	3
<i>Conversions</i>	4
<i>Details</i>	6
<i>Harmonies</i>	12
<i>Previews</i>	24
<i>Color Blindness Simulation</i>	28
<i>CSS Examples</i>	31

Color

**HunterLab(43.2615, 68.6800,
8.7963)**

Conversions

Conversions Part 1

Format	Color
Hex	E3256B
RGB	227, 37, 107
RGB Percent	89%, 15%, 42%
CMY	0.1098, 0.8548, 0.5804
CMYK	0.00, 0.84, 0.53, 0.11
HSL	338°, 77%, 52%
HSV	338°, 84%, 89%
XYZ	34.9940, 18.7156, 15.6780
YIQ	101.7900, 90.7700, 62.0500

Conversions

Conversions Part 2

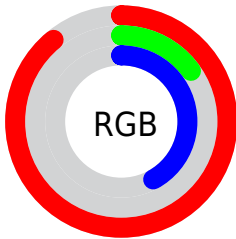
Format	Color
R_{YB}	227, 37, 107
Decimal	14886251
CIE _{Lab}	50.35, 72.35, 9.58
CIE _{LCh}	50, 72.985, 7.539
Yxy	18.7167, 0.5043, 0.2697
Android (android.graphics.Color)	4293076331 (0xFFE3256B)
YUV	101.7900, 2.5685, 109.8092
Hunter-Lab	43.2615, 68.6800, 8.7963

Details

The HunterLab color **43.2615, 68.6800, 8.7963** is a dark color, and the websafe version is hex **CC0066**, and the color name is **razzmatazz**. The color can be described as dark washed rose. A complement of this color would be **76.0043, -52.4055, 21.0264**, and the grayscale version is **36.3422, -1.9391, 1.9745**.

A 20% lighter version of the original color is **58.1651, 59.2126, 3.9043**, and **28.8541, 50.5441, 9.8803** is the 20% darker color. If you saturate the color by 10%, you get **41.7587, 71.4051, 12.3891**, and if you desaturate by 10%, it is **45.7405, 63.3753, 5.7056**.

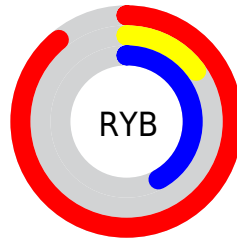
Distribution



Red (89%)

Green (15%)

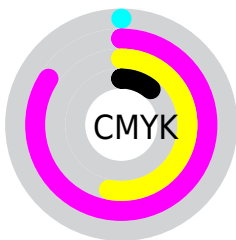
Blue (42%)



Red (89%)

Yellow (15%)

Blue (42%)

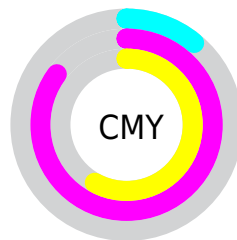


Cyan (0%)

Magenta (84%)

Yellow (53%)

Black (11%)



Cyan (11%)

Magenta (85%)

Yellow (58%)

Brightness & Saturation Gradients

These gradients show how the HunterLab color 43.2615, 68.6800, 8.7963 changes by changing the brightness by 10 percent. The first figure shows a shift by +10% for each color and the second figure -10%.

Similar to the brightness gradients but the following saturation gradients show a change of the HunterLab color 43.2615, 68.6800, 8.7963 by changing the saturation by 10% instead.

43.2615, 68.6800,
8.7963

43.2615, 68.6800,
8.7963

156.4865, 86.6612,
18.9056

33.8611, 66.3380,
7.6902

64.2299, 73.2715,
10.9933

25.2607, 64.1061,
6.5624

75.7039, 75.4575,
12.0941

17.5446, 62.2647,
5.3934

87.7898, 77.5525,
13.2019

10.8289, 61.6369,
4.4123

100.4582, 79.5540,
14.3189

1.9799, 196.3556,
1.3859

113.6834, 81.4629,
15.4467

0.0000, INF, NaN

0.0000, NaN, NaN

127.4428, 83.2815,

16.5865

0.0000, NaN, NaN

141.7164, 85.0131,
17.7393

0.0000, NaN, NaN

■ 43.2615, 68.6800,
8.7963

■ 43.2615, 68.6800,
8.7963

■ 41.7587, 71.4051,
12.3891

■ 45.7405, 63.3753,
5.7056

■ 41.1885, 72.0762,
14.6810

■ 49.1906, 55.9759,
3.3611

■ 53.5356, 47.1782,
1.8518

■ 58.6643, 37.6282,
1.1416

■ 64.4605, 27.7921,
1.1303

70.8191, 17.9532,
1.6996

77.6511, 8.2591,
2.7396

84.8841, -1.2289,
4.1579

92.4601, -10.4979,
5.8807

Harmonies

Analogous

The Analogous color harmony consists of three colors that are next to each other on the color wheel.



43.2628, 62.8267, -23.4490



43.2615, 68.6800, 8.7963



43.2628, 51.8693, 23.9044

Triad

The Triadic color harmony groups three colors that are evenly spaced from another and form a triangle on the color wheel.



43.2628, 68.6755, 8.7974



43.2628, -31.5006, 26.9143



43.2628, -21.7538, -81.8903

Complementary

The Complementary color scheme is a pair of colors which are on the opposite of each other on the color wheel.



43.2615, 68.6800, 8.7963



76.0043, -52.4055, 21.0264

Split Complementary

Split-complementary colors differ from the complementary color scheme. The scheme consists of three colors, the original color and two neighbors of the complement color.



43.2628, -38.4592, -44.5146



43.2615, 68.6800, 8.7963



43.2628, -42.9558, 18.2037

Square

The Square scheme is like the rectangle color scheme, but the four colors are evenly spaced on the color wheel.



43.2628, 68.6755, 8.7974



43.2628, -9.4390, 28.8972



43.2628, -45.1122, -5.2617



43.2628, 5.3113, -91.2157

Rectangle

The Rectangle color scheme consists of four colors that form a rectangle on the color wheel.



43.2615, 68.6800, 8.7963



43.2628, 32.1678, 27.5350



43.2628, -45.1122, -5.2617



43.2628, -28.5278, -71.3802

Sweetspot

The Sweet Spot groups the original color and five complimentary colors.



43.2628, 68.6755, 8.7974



79.7015, 22.1252, 1.8074



37.0910, 69.2954, -92.0992



35.6694, 12.0702, 0.7123

0.0000, NaN, NaN



46.2646, -2.4686, 2.5136

Same Dimension

The Same Dimension uses a secret algorithm to generate beautiful new colors.



43.2628, 68.6755, 8.7974



46.9755, 82.1646, 17.0389



44.2847, 57.8786, 25.9559



38.0202, 1.9882, 1.5545



31.4876, 55.1633, 10.7348



8.6608, 15.3664, 1.4533

Inverse Universe

The Inverse Universe completely reimagines the original color for something new.



43.2628, 68.6755, 8.7974



46.9755, 82.1646, 17.0389



70.3730, -30.7723, -18.4029



38.0202, 1.9882, 1.5545



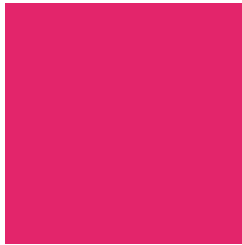
31.4876, 55.1633, 10.7348



8.6608, 15.3664, 1.4533

Previews

White Background



This preview shows how the HunterLab color 43.2615, 68.6800, 8.7963 looks on a white background.

Color Contrast Check

Large Text (above 18pt) WCAG AA ✓ Pass

Any Text WCAG AA × Fail

Large Text (above 18pt) WCAG AAA × Fail

Any Text WCAG AAA × Fail

Black Background



This preview shows how the HunterLab color 43.2615, 68.6800, 8.7963 looks on a black background.

Color Contrast Check

Large Text (above 18pt) WCAG AA ✓ Pass

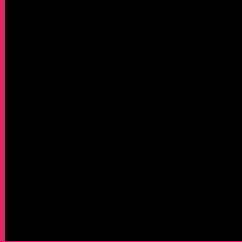
Any Text WCAG AA ✓ Pass

Large Text (above 18pt) WCAG AAA ✓ Pass

Any Text WCAG AAA × Fail

If you want to check with other color combinations, try the [Color Contrast Checker](#).

HunterLab 43.2615, 68.6800, 8.7963 Background



This preview shows how black text looks on a background with the HunterLab color 43.2615, 68.6800, 8.7963.



This preview shows how white text looks on a background with the HunterLab color 43.2615, 68.6800,

Color Blindness Simulation

Color vision deficiency is a very complex topic, and I could not describe the different causes any better than Wikipedia does, so if you want to learn more, you should check out their [article about color blindness](#).

Dichromacy



Original Color

43.2615, 68.6800, 8.7963

Protanopia

43.5212, 1.6056, -11.8903

Deuteranopia

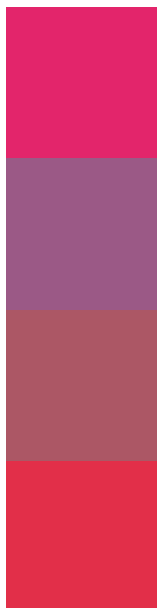
43.5294, 2.8240, 11.1330



Tritanopia

43.3821, 59.8230, 23.0094

Trichromacy



Original Color

43.2615, 68.6800, 8.7963

Protanomaly

39.7926, 26.3267, -8.6243

Deuteranomaly

40.6530, 28.8382, 7.5988

Tritanomaly

43.2236, 63.0465, 19.0916

Monochromacy



Original Color

43.2615, 68.6800, 8.7963

Achromatopsia

36.4511, -1.9449, 1.9805

Achromatomaly

35.5687, 24.3519, 0.5125

CSS Examples

Text

The CSS property to change the color of the text to HunterLab 43.2615, 68.6800, 8.7963 is called "color". The color property can be set on classes, ids or directly on the HTML element.

This example shows how text in the color `rgb(227, 37, 107)` looks like.

```
.text, #text, p{  
    color:rgb(227, 37, 107)  
}
```

If you want to add a text shadow in that color use the text-shadow property, you can generate a text shadow directly with our [CSS Text Shadow Generator](#).

Here you see how black text with a 4 pixel rgb(227, 37, 107) colored shadow looks like.

```
.shadow{ text-shadow: 4px 4px 2px rgb(227, 37, 107) }
```

Border

The CSS property to change the border of an element to HunterLab 43.2615, 68.6800, 8.7963 is called "border". The border property can be set on classes, ids or directly on the HTML element.

This example shows the color as border, it can be applied via the CSS property "border" or "border-color".

```
.border, #border, table{ border:4px solid rgb(227, 37, 107) }
```


If only the border color should be changed use the property border-color.

```
.border{ border-color:rgb(227, 37, 107) }
```

If you want to add a box shadow in that color use:

Here you see how a box with a 4 pixel rgb(227, 37, 107) colored shadow looks like.

```
.boxshadow{ -moz-box-shadow:4px 4px 4px  
4px rgb(227, 37, 107); -webkit-box-  
shadow:4px 4px 4px 4px rgb(227, 37, 107);  
box-shadow:4px 4px 4px 4px rgb(227, 37,  
107) }
```

Background

The CSS property to change the background color of an element to HunterLab 43.2615, 68.6800, 8.7963 is called "background". The background property can be set on classes, ids or directly on the HTML element.

```
.background, #background, body{  
background: rgb(227, 37, 107) }
```

If only the background color should be changed can be used:

```
.background{ background-color: rgb(227, 37,  
107) }
```

This example shows the color as background, it is applied via the CSS property "background".

To optimize and compress your CSS code, you can use our [online CSS compressor and optimizer](#) based on csstidy. If you want to create a linear or radial gradient as background or border, check our [CSS Gradient Generator](#).

Hey! You found this booklet interesting? Support Converting Colors with the new Membership Option!

The pro membership hides all ads, plus gives you double the colors in the color bucket, and more awesome pro features!

[Learn more, Memberships starting at \\$2.50/m!](#)

**Follow me
on Twitter!**

@ConvertingColor