

Converting Colors

HunterLab(43.2844, 55.9079,
11.1301)

Have a look what the booklet for
HunterLab(43.2844, 55.9079,
11.1301) contains.

HunterLab(43.3733, 55.9850, 11.2255)	3
<i>Conversions</i>	4
<i>Details</i>	6
<i>Harmonies</i>	12
<i>Previews</i>	24
<i>Color Blindness Simulation</i>	28
<i>CSS Examples</i>	31

Color

**HunterLab(43.3733, 55.9850,
11.2255)**

Conversions

Conversions Part 1

Format	Color
Hex	D73E64
RGB	215, 62, 100
RGB Percent	84%, 24%, 39%
CMY	0.1569, 0.7568, 0.6078
CMYK	0.00, 0.71, 0.53, 0.16
HSL	345°, 66%, 54%
HSV	345°, 71%, 84%
XYZ	32.0472, 18.8124, 13.9987
YIQ	112.0790, 78.9900, 44.2540

Conversions

Conversions Part 2

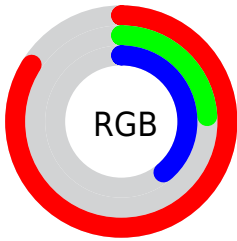
Format	Color
R_{YB}	215, 62, 100
Decimal	14106212
CIE Lab	50.47, 61.51, 13.66
CIE LCh	50, 63.005, 12.519
Yxy	18.8135, 0.4941, 0.2901
Android (android.graphics.Color)	4292296292 (0xFFD73E64)
YUV	112.0790, -5.9549, 90.2617
Hunter-Lab	43.3733, 55.9850, 11.2255

Details

The HunterLab color **43.3733, 55.9850, 11.2255** is a dark color, and the websafe version is hex **CC3366**. The color can be described as dark muted rose. A complement of this color would be **72.6635, -43.0881, 10.0771**, and the grayscale version is **40.2859, -2.1496, 2.1888**.

A 20% lighter version of the original color is **60.7678, 50.9322, 9.7704**, and **26.7140, 46.7455, 9.5335** is the 20% darker color. If you saturate the color by 10%, you get **40.7883, 61.6339, 14.0683**, and if you desaturate by 10%, it is **46.8792, 48.6343, 8.7785**.

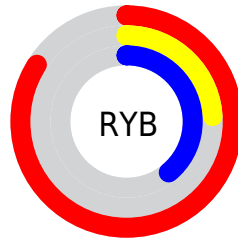
Distribution



Red (84%)

Green (24%)

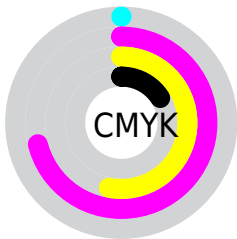
Blue (39%)



Red (84%)

Yellow (24%)

Blue (39%)

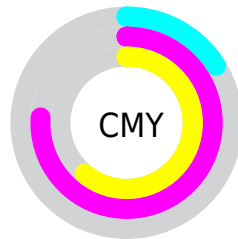


Cyan (0%)

Magenta (71%)

Yellow (53%)

Black (16%)



Cyan (16%)

Magenta (76%)

Yellow (61%)

Brightness & Saturation Gradients

These gradients show how the HunterLab color 43.3733, 55.9850, 11.2255 changes by changing the brightness by 10 percent. The first figure shows a shift by +10% for each color and the second figure -10%.

Similar to the brightness gradients but the following saturation gradients show a change of the HunterLab color 43.3733, 55.9850, 11.2255 by changing the saturation by 10% instead.

■ 43.3733, 55.9850,
11.2255

■ 43.3733, 55.9850,
11.2255

156.6580, 71.1830,
23.1228

■ 33.9641, 53.8392,
9.8423

■ 64.3574, 60.0311,
13.9075

■ 25.3541, 51.6884,
8.4049

■ 75.8385, 61.9089,
15.2255

■ 17.6273, 49.6926,
6.8808

■ 87.9313, 63.6858,
16.5374

■ 10.8994, 48.3473,
5.9596

■ 100.6062, 65.3644,
17.8474

■ 2.2769, 134.6523,
1.5938

■ 113.8375, 66.9489,
19.1588

0.0000, INF, NaN

0.0000, NaN, NaN

127.6029, 68.4439,

20.4740

0.0000, NaN, NaN

141.8824, 69.8538,
21.7949

0.0000, NaN, NaN

■ 43.3733, 55.9850,
11.2255

■ 43.3733, 55.9850,
11.2255

■ 40.7883, 61.6339,
14.0683

■ 46.8792, 48.6343,
8.7785

■ 39.1491, 65.0404,
17.0575

■ 51.2124, 40.2610,
6.8544

■ 38.3506, 66.3561,
19.5132

■ 56.2610, 31.4156,
5.4803

■ 61.9142, 22.4671,
4.6181

■ 68.0745, 13.6224,
4.2016

■ 74.6611, 4.9771,
4.1604

■ 81.6088, -3.4388,
4.4301

■ 88.8660, -11.6301,
4.9562

■ 96.2222, -19.3618,
5.5010

Harmonies

Analogous

The Analogous color harmony consists of three colors that are next to each other on the color wheel.



43.3745, 54.3827, -13.9288



43.3733, 55.9850, 11.2255



43.3745, 39.5796, 23.4125

Triad

The Triadic color harmony groups three colors that are evenly spaced from another and form a triangle on the color wheel.



43.3745, 55.9810, 11.2265



43.3745, -30.4931, 24.4702



43.3745, -15.9579, -68.8271

Complementary

The Complementary color scheme is a pair of colors which are on the opposite of each other on the color wheel.



43.3733, 55.9850, 11.2255



72.6635, -43.0881, 10.0771

Split Complementary

Split-complementary colors differ from the complementary color scheme. The scheme consists of three colors, the original color and two neighbors of the complement color.



43.3745, -32.6132, -41.8855



43.3733, 55.9850, 11.2255



43.3745, -39.5897, 14.0688

Square

The Square scheme is like the rectangle color scheme, but the four colors are evenly spaced on the color wheel.



43.3745, 55.9810, 11.2265



43.3745, -12.3470, 27.5777



43.3745, -40.2647, -8.8907



43.3745, 8.7170, -71.2509

Rectangle

The Rectangle color scheme consists of four colors that form a rectangle on the color wheel.



43.3733, 55.9850, 11.2255



43.3745, 22.4365, 26.5983



43.3745, -40.2647, -8.8907



43.3745, -22.5231, -61.8447

Sweetspot

The Sweet Spot groups the original color and five complimentary colors.



43.3745, 55.9810, 11.2265



82.5450, 16.5737, 5.0982



42.0365, 62.5895, -63.6784



37.1997, 9.0420, 2.4012

0.0000, NaN, NaN



46.2646, -2.4686, 2.5136

Same Dimension

The Same Dimension uses a secret algorithm to generate beautiful new colors.



43.3745, 55.9810, 11.2265



48.4110, 77.0598, 18.7585



48.9477, 36.4199, 25.2768



35.3141, 1.6282, 1.9493



29.6839, 51.4080, 14.7356



7.3811, 12.9604, 2.2889

Inverse Universe

The Inverse Universe completely reimagines the original color for something new.



43.3745, 55.9810, 11.2265



48.4110, 77.0598, 18.7585



61.0551, -19.3545, -25.1481



35.3141, 1.6282, 1.9493



29.6839, 51.4080, 14.7356



7.3811, 12.9604, 2.2889

Previews

White Background



This preview shows how the HunterLab color 43.3733, 55.9850, 11.2255 looks on a white background.

Color Contrast Check

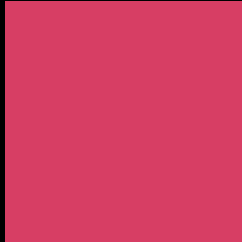
Large Text (above 18pt) WCAG AA ✓ Pass

Any Text WCAG AA × Fail

Large Text (above 18pt) WCAG AAA × Fail

Any Text WCAG AAA × Fail

Black Background



This preview shows how the HunterLab color 43.3733, 55.9850, 11.2255 looks on a black background.

Color Contrast Check

Large Text (above 18pt) WCAG AA ✓ Pass

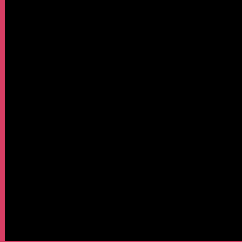
Any Text WCAG AA ✓ Pass

Large Text (above 18pt) WCAG AAA ✓ Pass

Any Text WCAG AAA × Fail

If you want to check with other color combinations, try the [Color Contrast Checker](#).

HunterLab 43.3733, 55.9850, 11.2255 Background



This preview shows how black text looks on a background with the HunterLab color 43.3733, 55.9850, 11.2255.



This preview shows how white text looks on a background with the HunterLab color 43.3733, 55.9850,

Color Blindness Simulation

Color vision deficiency is a very complex topic, and I could not describe the different causes any better than Wikipedia does, so if you want to learn more, you should check out their [article about color blindness](#).

Dichromacy



Original Color

43.3733, 55.9850, 11.2255

Protanopia

43.6322, -0.7076, -1.8243

Deuteranopia

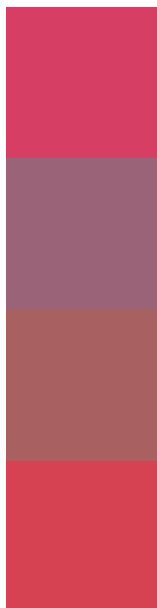
43.6255, 2.9370, 12.8589



Tritanopia

43.2993, 50.6930, 19.1732

Trichromacy



Original Color

43.3733, 55.9850, 11.2255

Protanomaly

41.5020, 19.0223, 0.9732

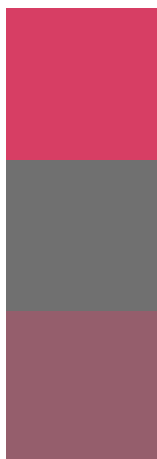
Deuteranomaly

42.0063, 22.7642, 10.6630

Tritanomaly

43.3610, 52.5676, 16.7240

Monochromacy



Original Color

43.3733, 55.9850, 11.2255

Achromatopsia

40.2529, -2.1478, 2.1870

Achromatomaly

39.3417, 17.8298, 3.1732

CSS Examples

Text

The CSS property to change the color of the text to HunterLab 43.3733, 55.9850, 11.2255 is called "color". The color property can be set on classes, ids or directly on the HTML element.

This example shows how text in the color `rgb(215, 62, 100)` looks like.

```
.text, #text, p{  
    color:rgb(215, 62, 100)  
}
```

If you want to add a text shadow in that color use the text-shadow property, you can generate a text shadow directly with our [CSS Text Shadow Generator](#).

Here you see how black text with a 4 pixel rgb(215, 62, 100) colored shadow looks like.

```
.shadow{ text-shadow: 4px 4px 2px rgb(215, 62, 100) }
```

Border

The CSS property to change the border of an element to HunterLab 43.3733, 55.9850, 11.2255 is called "border". The border property can be set on classes, ids or directly on the HTML element.

This example shows the color as border, it can be applied via the CSS property "border" or "border-color".

```
.border, #border, table{ border:4px solid rgb(215, 62, 100) }
```


If only the border color should be changed use the property `border-color`.

```
.border{ border-color:rgb(215, 62, 100) }
```

If you want to add a box shadow in that color use:

Here you see how a box with a 4 pixel `rgb(215, 62, 100)` colored shadow looks like.

```
.boxshadow{ -moz-box-shadow:4px 4px 4px  
4px rgb(215, 62, 100); -webkit-box-  
shadow:4px 4px 4px 4px rgb(215, 62, 100);  
box-shadow:4px 4px 4px 4px rgb(215, 62,  
100) }
```

Background

The CSS property to change the background color of an element to HunterLab 43.3733, 55.9850, 11.2255 is called "background". The background property can be set on classes, ids or directly on the HTML element.

```
.background, #background, body{  
background: rgb(215, 62, 100) }
```

If only the background color should be changed can be used:

```
.background{ background-color: rgb(215, 62,  
100) }
```

This example shows the color as background, it is applied via the CSS property "background".

To optimize and compress your CSS code, you can use our [online CSS compressor and optimizer](#) based on csstidy. If you want to create a linear or radial gradient as background or border, check our [CSS Gradient Generator](#).

Hey! You found this booklet interesting? Support Converting Colors with the new Membership Option!

The pro membership hides all ads, plus gives you double the colors in the color bucket, and more awesome pro features!

[Learn more, Memberships starting at \\$2.50/m!](#)

**Follow me
on Twitter!**

@ConvertingColor