

Converting Colors

HunterLab(43.4370, 10.4358,
20.2738)

Have a look what the booklet for
HunterLab(43.4370, 10.4358,
20.2738) contains.

HunterLab(43.4563, 10.5884, 20.3451)	3
<i>Conversions</i>	4
<i>Details</i>	6
<i>Harmonies</i>	12
<i>Previews</i>	24
<i>Color Blindness Simulation</i>	28
<i>CSS Examples</i>	31

Color

**HunterLab(43.4563, 10.5884,
20.3451)**

Conversions

Conversions Part 1

Format	Color
Hex	A16D40
RGB	161, 109, 64
RGB Percent	63%, 43%, 25%
CMY	0.3686, 0.5725, 0.7490
CMYK	0.00, 0.32, 0.60, 0.37
HSL	28°, 43%, 44%
HSV	28°, 60%, 63%
XYZ	21.0920, 18.8845, 7.3839
YIQ	119.4180, 45.4370, -2.9710

Conversions

Conversions Part 2

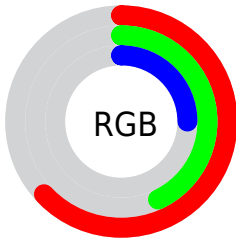
Format	Color
RYB	161, 148, 64
Decimal	10579264
CIELab	50.55, 15.85, 33.19
CIELCh	51, 36.776, 64.473
Yxy	18.8854, 0.4453, 0.3987
Android (android.graphics.Color)	4288769344 (0xFFA16D40)
YUV	119.4180, -27.3211, 36.4674
Hunter-Lab	43.4563, 10.5884, 20.3451

Details

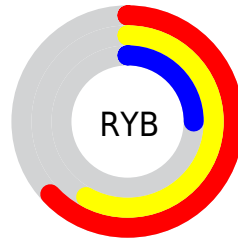
The HunterLab color **43.4563, 10.5884, 20.3451** is a dark color, and the websafe version is hex **996633**. A complement of this color would be **40.1911, -4.6370, -25.0565**, and the grayscale version is **43.2036, -2.3052, 2.3473**.

A 20% lighter version of the original color is **64.6081, 11.0936, 25.6686**, and **25.3877, 9.8633, 14.4800** is the 20% darker color. If you saturate the color by 10%, you get **41.2018, 13.7744, 21.6209**, and if you desaturate by 10%, it is **45.8571, 7.6632, 18.5531**.

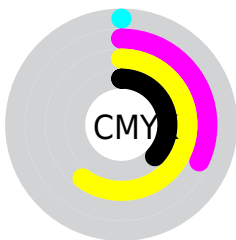
Distribution



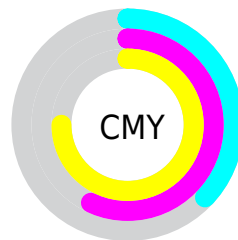
- Red (63%)
- Green (43%)
- Blue (25%)



- Red (63%)
- Yellow (58%)
- Blue (25%)



- Cyan (0%)
- Magenta (32%)
- Yellow (60%)
- Black (37%)



- Cyan (37%)
- Magenta (57%)
- Yellow (75%)

Brightness & Saturation Gradients

These gradients show how the HunterLab color 43.4563, 10.5884, 20.3451 changes by changing the brightness by 10 percent. The first figure shows a shift by +10% for each color and the second figure -10%.

Similar to the brightness gradients but the following saturation gradients show a change of the HunterLab color 43.4563, 10.5884, 20.3451 by changing the saturation by 10% instead.

■ 43.4563, 10.5884,
20.3451

■ 43.4563, 10.5884,
20.3451

■ 156.7851, 10.8113,
41.4651

■ 34.0405, 10.1945,
17.5206

■ 64.4519, 11.0933,
25.5516

■ 25.4234, 9.6906,
14.4846

■ 75.9383, 11.2301,
27.9957

■ 17.6887, 9.0528,
11.8548

■ 88.0361, 11.2994,
30.3628

■ 10.9517, 8.2517,
7.6662

■ 100.7158, 11.3073,
32.6677

■ 2.4741, 27.7807,
1.7319

■ 113.9518, 11.2586,
34.9220

0.0000, NaN, NaN

0.0000, NaN, NaN

■ 127.7216, 11.1575,

37.1351

0.0000, NaN, NaN

142.0053, 11.0074,
39.3141

0.0000, NaN, NaN

■ 43.4563, 10.5884,
20.3451

■ 43.4563, 10.5884,
20.3451

■ 41.2018, 13.7744,
21.6209

■ 45.8571, 7.6632,
18.5531

■ 39.1027, 17.2118,
22.3456

■ 48.3889, 5.0077,
16.2857

■ 37.1719, 20.8628,
22.5070

■ 51.0415, 2.6130,
13.5884

■ 35.4516, 24.5292,
22.2745

■ 53.8045, 0.4664,
10.5051

■ 56.6684, -1.4476,
7.0766

■ 59.6248, -3.1460,
3.3396

■ 62.6662, -4.6460,
-0.6731

■ 65.7858, -5.9644,
-4.9331

■ 68.9777, -7.1171,
-9.4153

Harmonies

Analogous

The Analogous color harmony consists of three colors that are next to each other on the color wheel.



43.4574, 23.6132, 15.0312



43.4563, 10.5884, 20.3451



43.4574, -4.5105, 21.5803

Triad

The Triadic color harmony groups three colors that are evenly spaced from another and form a triangle on the color wheel.



43.4574, 10.5862, 20.3456



43.4574, -27.1317, 0.2088



43.4574, 14.9217, -26.2651

Complementary

The Complementary color scheme is a pair of colors which are on the opposite of each other on the color wheel.



43.4563, 10.5884, 20.3451



40.1911, -4.6370, -25.0565

Split Complementary

Split-complementary colors differ from the complementary color scheme. The scheme consists of three colors, the original color and two neighbors of the complement color.



43.4574, -0.0875, -34.0346



43.4563, 10.5884, 20.3451



43.4574, -23.3142, -15.8397

Square

The Square scheme is like the rectangle color scheme, but the four colors are evenly spaced on the color wheel.



43.4574, 10.5862, 20.3456



43.4574, -25.0632, 12.4582



43.4574, -13.8782, -29.6942



43.4574, 26.3413, -10.9382

Rectangle

The Rectangle color scheme consists of four colors that form a rectangle on the color wheel.



43.4563, 10.5884, 20.3451



43.4574, -13.4552, 20.4512



43.4574, -13.8782, -29.6942



43.4574, 10.0607, -30.0435

Sweetspot

The Sweet Spot groups the original color and five complimentary colors.



43.4574, 10.5862, 20.3456



72.7259, 0.1117, 13.2166



35.4071, 37.6696, -5.8857



33.5723, 0.3996, 6.7548



89.8524, -4.7943, 4.8819



37.4146, -1.9963, 2.0328

Same Dimension

The Same Dimension uses a secret algorithm to generate beautiful new colors.



43.4574, 10.5862, 20.3456



54.2432, 19.8277, 29.3158



56.3688, -11.4457, 29.4317



27.5722, -0.7851, 3.2567



31.8087, 21.6187, 19.9789



5.5402, 1.1480, 3.4339

Inverse Universe

The Inverse Universe completely reimagines the original color for something new.



40.1911, -4.6370, -25.0565



49.0533, -3.7247, -42.8271



28.1091, 18.5436, -53.4755



27.3116, -2.0447, -0.3631



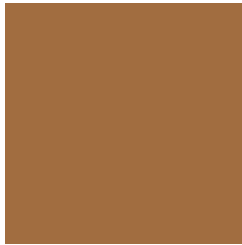
27.3710, 3.3348, -41.4101



5.0089, -1.2174, -3.6327

Previews

White Background



This preview shows how the HunterLab color 43.4563, 10.5884, 20.3451 looks on a white background.

Color Contrast Check

Large Text (above 18pt) WCAG AA ✓ Pass

Any Text WCAG AA × Fail

Large Text (above 18pt) WCAG AAA × Fail

Any Text WCAG AAA × Fail

Black Background



This preview shows how the HunterLab color 43.4563, 10.5884, 20.3451 looks on a black background.

Color Contrast Check

Large Text (above 18pt) WCAG AA ✓ Pass

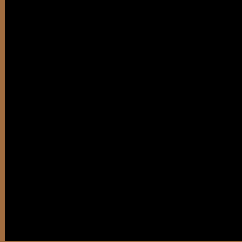
Any Text WCAG AA ✓ Pass

Large Text (above 18pt) WCAG AAA ✓ Pass

Any Text WCAG AAA × Fail

If you want to check with other color combinations, try the [Color Contrast Checker](#).

HunterLab 43.4563, 10.5884, 20.3451 Background



This preview shows how black text looks on a background with the HunterLab color 43.4563, 10.5884, 20.3451.



This preview shows how white text looks on a background with the HunterLab color 43.4563, 10.5884, 20.3451.

Color Blindness Simulation

Color vision deficiency is a very complex topic, and I could not describe the different causes any better than Wikipedia does, so if you want to learn more, you should check out their [article about color blindness](#).

Dichromacy



Original Color

43.4563, 10.5884, 20.3451

Protanopia

43.6791, -4.7034, 19.4091

Deuteranopia

43.4928, 2.8538, 20.4393



Tritanopia

43.2905, 19.1985, 6.4145

Trichromacy



Original Color

43.4563, 10.5884, 20.3451

Protanomaly

43.5517, 0.4367, 19.6148

Deuteranomaly

43.5218, 5.6155, 20.5098

Tritanomaly

43.2410, 15.8723, 12.4027

Monochromacy



Original Color

43.4563, 10.5884, 20.3451

Achromatopsia

42.9506, -2.2917, 2.3336

Achromatomaly

42.6974, 1.4264, 9.9432

CSS Examples

Text

The CSS property to change the color of the text to HunterLab 43.4563, 10.5884, 20.3451 is called "color". The color property can be set on classes, ids or directly on the HTML element.

This example shows how text in the color `rgb(161, 109, 64)` looks like.

```
.text, #text, p{  
    color:rgb(161, 109, 64)  
}
```

If you want to add a text shadow in that color use the text-shadow property, you can generate a text shadow directly with our [CSS Text Shadow Generator](#).

Here you see how black text with a 4 pixel rgb(161, 109, 64) colored shadow looks like.

```
.shadow{ text-shadow: 4px 4px 2px rgb(161, 109, 64) }
```

Border

The CSS property to change the border of an element to HunterLab 43.4563, 10.5884, 20.3451 is called "border". The border property can be set on classes, ids or directly on the HTML element.

This example shows the color as border, it can be applied via the CSS property "border" or "border-color".

```
.border, #border, table{ border:4px solid rgb(161, 109, 64) }
```


If only the border color should be changed use the property border-color.

```
.border{ border-color:rgb(161, 109, 64) }
```

If you want to add a box shadow in that color use:

Here you see how a box with a 4 pixel rgb(161, 109, 64) colored shadow looks like.

```
.boxshadow{ -moz-box-shadow:4px 4px 4px  
4px rgb(161, 109, 64); -webkit-box-  
shadow:4px 4px 4px 4px rgb(161, 109, 64);  
box-shadow:4px 4px 4px 4px rgb(161, 109,  
64) }
```

Background

The CSS property to change the background color of an element to HunterLab 43.4563, 10.5884, 20.3451 is called "background". The background property can be set on classes, ids or directly on the HTML element.

```
.background, #background, body{  
background: rgb(161, 109, 64) }
```

If only the background color should be changed can be used:

```
.background{ background-color: rgb(161,  
109, 64) }
```

This example shows the color as background, it is applied via the CSS property "background".

To optimize and compress your CSS code, you can use our [online CSS compressor and optimizer](#) based on csstidy. If you want to create a linear or radial gradient as background or border, check our [CSS Gradient Generator](#).

Hey! You found this booklet interesting? Support Converting Colors with the new Membership Option!

The pro membership hides all ads, plus gives you double the colors in the color bucket, and more awesome pro features!

[Learn more, Memberships starting at \\$2.50/m!](#)

**Follow me
on Twitter!**

@ConvertingColor