

Converting Colors

HunterLab(43.4522, 49.8751,
2.9925)

Have a look what the booklet for
HunterLab(43.4522, 49.8751,
2.9925) contains.

HunterLab(43.4196, 50.1033, 2.9311)	3
<i>Conversions</i>	4
<i>Details</i>	6
<i>Harmonies</i>	12
<i>Previews</i>	24
<i>Color Blindness Simulation</i>	28
<i>CSS Examples</i>	31

Color

**HunterLab(43.4196, 50.1033,
2.9311)**

Conversions

Conversions Part 1

Format	Color
Hex	CC4879
RGB	204, 72, 121
RGB Percent	80%, 28%, 47%
CMY	0.2000, 0.7176, 0.5255
CMYK	0.00, 0.65, 0.41, 0.20
HSL	338°, 56%, 54%
HSV	338°, 65%, 80%
XYZ	30.6704, 18.8526, 20.1116
YIQ	117.0540, 62.9430, 43.2230

Conversions

Conversions Part 2

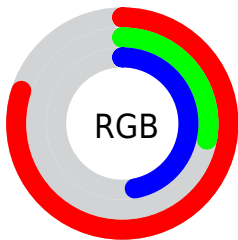
Format	Color
R_{YB}	204, 72, 121
Decimal	13387897
CIE _{Lab}	50.52, 56.25, 0.78
CIE _{LCh}	51, 56.252, 0.795
Yxy	18.8536, 0.4404, 0.2707
Android (android.graphics.Color)	4291577977 (0xFFCC4879)
YUV	117.0540, 1.9454, 76.2516
Hunter-Lab	43.4196, 50.1033, 2.9311

Details

The HunterLab color **43.4196, 50.1033, 2.9311** is a dark color, and the websafe version is hex **CC3366**. The color can be described as dark muted rose. A complement of this color would be **68.5059, -41.2401, 14.6496**, and the grayscale version is **42.1748, -2.2503, 2.2914**.

A 20% lighter version of the original color is **63.0202, 49.7523, 2.5087**, and **25.4966, 45.5504, 1.8505** is the 20% darker color. If you saturate the color by 10%, you get **40.4288, 56.5317, 5.0249**, and if you desaturate by 10%, it is **47.2006, 42.4060, 1.5749**.

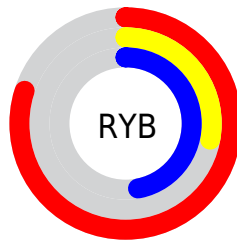
Distribution



Red (80%)

Green (28%)

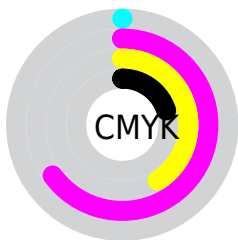
Blue (47%)



Red (80%)

Yellow (28%)

Blue (47%)

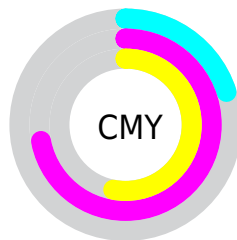


Cyan (0%)

Magenta (65%)

Yellow (41%)

Black (20%)



Cyan (20%)

Magenta (72%)

Yellow (53%)

Brightness & Saturation Gradients

These gradients show how the HunterLab color 43.4196, 50.1033, 2.9311 changes by changing the brightness by 10 percent. The first figure shows a shift by +10% for each color and the second figure -10%.

Similar to the brightness gradients but the following saturation gradients show a change of the HunterLab color 43.4196, 50.1033, 2.9311 by changing the saturation by 10% instead.

43.4196, 50.1033,
2.9311

43.4196, 50.1033,
2.9311

156.7289, 63.8364,
9.4070

34.0067, 48.0868,
2.3747

64.4101, 53.8405,
4.1556

25.3928, 46.0238,
1.8564

75.8942, 55.5530,
4.8176

17.6616, 44.0287,
1.3804

87.9898, 57.1626,
5.5110

10.9286, 42.4729,
0.9503

100.6674, 58.6737,
6.2345

2.3890, 113.3953,
1.4849

113.9013, 60.0916,
6.9868

0.0000, INF, NaN

0.0000, NaN, NaN

127.6692, 61.4214,

7.7670

0.0000, NaN, NaN

141.9510, 62.6681,
8.5740

0.0000, NaN, NaN

■ 43.4196, 50.1033,
2.9311

■ 43.4196, 50.1033,
2.9311

■ 40.4288, 56.5317,
5.0249

■ 47.2006, 42.4060,
1.5749

■ 38.2894, 61.0950,
7.7713

■ 51.6727, 34.0193,
0.9250

■ 36.9992, 63.3980,
10.9509

■ 56.7358, 25.3571,
0.8959

■ 36.5449, 64.0014,
12.6287

■ 62.2977, 16.6768,
1.3842

■ 68.2798, 8.1148,
2.2924

■ 74.6181, -0.2700,
3.5385

■ 81.2610, -8.4635,
5.0568

■ 88.1673, -16.4740,
6.7959

■ 95.0999, -24.0225,
8.4894

Harmonies

Analogous

The Analogous color harmony consists of three colors that are next to each other on the color wheel.



43.4208, 42.3822, -22.9639



43.4196, 50.1033, 2.9311



43.4208, 41.5584, 18.6222

Triad

The Triadic color harmony groups three colors that are evenly spaced from another and form a triangle on the color wheel.



43.4208, 50.1000, 2.9322



43.4208, -22.3636, 24.9633



43.4208, -21.5155, -51.2571

Complementary

The Complementary color scheme is a pair of colors which are on the opposite of each other on the color wheel.



43.4196, 50.1033, 2.9311



68.5059, -41.2401, 14.6496

Split Complementary

Split-complementary colors differ from the complementary color scheme. The scheme consists of three colors, the original color and two neighbors of the complement color.



43.4208, -33.6415, -24.5017



43.4196, 50.1033, 2.9311



43.4208, -34.0562, 18.0572

Square

The Square scheme is like the rectangle color scheme, but the four colors are evenly spaced on the color wheel.



43.4208, 50.1000, 2.9322



43.4208, -2.9194, 26.6862



43.4208, -37.7264, 1.7870



43.4208, -1.7156, -62.4165

Rectangle

The Rectangle color scheme consists of four colors that form a rectangle on the color wheel.



43.4196, 50.1033, 2.9311



43.4208, 28.6287, 23.7169



43.4208, -37.7264, 1.7870



43.4208, -26.4688, -43.2875

Sweetspot

The Sweet Spot groups the original color and five complimentary colors.



43.4208, 50.1000, 2.9322



84.3082, 15.4261, 2.3590



39.7580, 49.0854, -59.8335



37.9790, 8.6170, 0.9407

0.0000, NaN, NaN



46.2646, -2.4686, 2.5136

Same Dimension

The Same Dimension uses a secret algorithm to generate beautiful new colors.



43.4208, 50.1000, 2.9322



50.7029, 75.6195, 7.9008



44.9309, 38.6194, 20.2703



33.5878, 1.7083, 1.3679



29.0217, 50.8809, 9.6028



6.7014, 11.9574, 0.6004

Inverse Universe

The Inverse Universe completely reimagines the original color for something new.



43.4208, 50.1000, 2.9322



50.7029, 75.6195, 7.9008



64.7776, -26.0529, -12.8277



33.5878, 1.7083, 1.3679



29.0217, 50.8809, 9.6028



6.7014, 11.9574, 0.6004

Previews

White Background



This preview shows how the HunterLab color 43.4196, 50.1033, 2.9311 looks on a white background.

Color Contrast Check

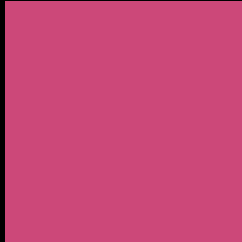
Large Text (above 18pt) WCAG AA ✓ Pass

Any Text WCAG AA × Fail

Large Text (above 18pt) WCAG AAA × Fail

Any Text WCAG AAA × Fail

Black Background



This preview shows how the HunterLab color 43.4196, 50.1033, 2.9311 looks on a black background.

Color Contrast Check

Large Text (above 18pt) WCAG AA ✓ Pass

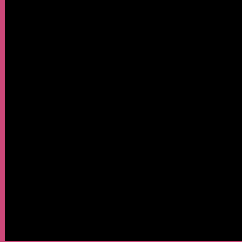
Any Text WCAG AA ✓ Pass

Large Text (above 18pt) WCAG AAA ✓ Pass

Any Text WCAG AAA × Fail

If you want to check with other color combinations, try the [Color Contrast Checker](#).

HunterLab 43.4196, 50.1033, 2.9311 Background



This preview shows how black text looks on a background with the HunterLab color 43.4196, 50.1033, 2.9311.



This preview shows how white text looks on a background with the HunterLab color 43.4196, 50.1033,

Color Blindness Simulation

Color vision deficiency is a very complex topic, and I could not describe the different causes any better than Wikipedia does, so if you want to learn more, you should check out their [article about color blindness](#).

Dichromacy



Original Color

43.4196, 50.1033, 2.9311

Protanopia

43.8319, 1.3247, -11.9979

Deuteranopia

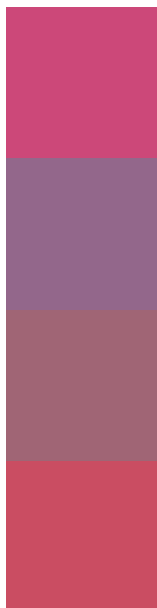
43.7165, 2.9028, 4.9909



Tritanopia

43.3713, 41.7895, 15.7081

Trichromacy



Original Color

43.4196, 50.1033, 2.9311

Protanomaly

42.1517, 17.4632, -8.0781

Deuteranomaly

42.5033, 19.5314, 3.0558

Tritanomaly

43.2968, 44.6778, 11.6379

Monochromacy



Original Color

43.4196, 50.1033, 2.9311

Achromatopsia

42.1768, -2.2504, 2.2915

Achromatomaly

41.2370, 15.7849, 1.0434

CSS Examples

Text

The CSS property to change the color of the text to HunterLab 43.4196, 50.1033, 2.9311 is called "color". The color property can be set on classes, ids or directly on the HTML element.

This example shows how text in the color `rgb(204, 72, 121)` looks like.

```
.text, #text, p{  
    color:rgb(204, 72, 121)  
}
```

If you want to add a text shadow in that color use the text-shadow property, you can generate a text shadow directly with our [CSS Text Shadow Generator](#).

Here you see how black text with a 4 pixel rgb(204, 72, 121) colored shadow looks like.

```
.shadow{ text-shadow: 4px 4px 2px rgb(204, 72, 121) }
```

Border

The CSS property to change the border of an element to HunterLab 43.4196, 50.1033, 2.9311 is called "border". The border property can be set on classes, ids or directly on the HTML element.

This example shows the color as border, it can be applied via the CSS property "border" or "border-color".

```
.border, #border, table{ border:4px solid rgb(204, 72, 121) }
```


If only the border color should be changed use the property `border-color`.

```
.border{ border-color:rgb(204, 72, 121) }
```

If you want to add a box shadow in that color use:

Here you see how a box with a 4 pixel `rgb(204, 72, 121)` colored shadow looks like.

```
.boxshadow{ -moz-box-shadow:4px 4px 4px  
4px rgb(204, 72, 121); -webkit-box-  
shadow:4px 4px 4px 4px rgb(204, 72, 121);  
box-shadow:4px 4px 4px 4px rgb(204, 72,  
121) }
```

Background

The CSS property to change the background color of an element to HunterLab 43.4196, 50.1033, 2.9311 is called "background". The background property can be set on classes, ids or directly on the HTML element.

```
.background, #background, body{  
background: rgb(204, 72, 121) }
```

If only the background color should be changed can be used:

```
.background{ background-color: rgb(204, 72,  
121) }
```

This example shows the color as background, it is applied via the CSS property "background".

To optimize and compress your CSS code, you can use our [online CSS compressor and optimizer](#) based on csstidy. If you want to create a linear or radial gradient as background or border, check our [CSS Gradient Generator](#).

Hey! You found this booklet interesting? Support Converting Colors with the new Membership Option!

The pro membership hides all ads, plus gives you double the colors in the color bucket, and more awesome pro features!

[Learn more, Memberships starting at \\$2.50/m!](#)

**Follow me
on Twitter!**

@ConvertingColor