

Converting Colors

HunterLab(43.5825, 59.4436,
2.6057)

Have a look what the booklet for
HunterLab(43.5825, 59.4436,
2.6057) contains.

HunterLab(43.5948, 59.4977, 2.4192)	3
<i>Conversions</i>	4
<i>Details</i>	6
<i>Harmonies</i>	12
<i>Previews</i>	24
<i>Color Blindness Simulation</i>	28
<i>CSS Examples</i>	31

Color

**HunterLab(43.5948, 59.4977,
2.4192)**

Conversions

Conversions Part 1

Format	Color
Hex	D73B7B
RGB	215, 59, 123
RGB Percent	84%, 23%, 48%
CMY	0.1569, 0.7686, 0.5176
CMYK	0.00, 0.73, 0.43, 0.16
HSL	335°, 66%, 54%
HSV	335°, 73%, 84%
XYZ	33.1635, 19.0051, 20.6593
YIQ	112.9400, 72.4320, 52.9760

Conversions

Conversions Part 2

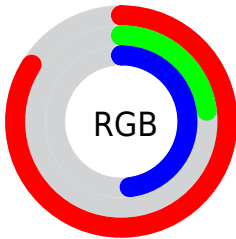
Format	Color
R_{YB}	215, 59, 123
Decimal	14105467
CIE _{Lab}	50.69, 64.53, 0.06
CIE _{LCh}	51, 64.527, 0.057
Yxy	19.0061, 0.4554, 0.2610
Android (android.graphics.Color)	4292295547 (0xFFD73B7B)
YUV	112.9400, 4.9596, 89.5066
Hunter-Lab	43.5948, 59.4977, 2.4192

Details

The HunterLab color **43.5948, 59.4977, 2.4192** is a dark color, and the websafe version is hex **CC3366**. The color can be described as dark muted rose. A complement of this color would be **71.9483, -47.2850, 19.3759**, and the grayscale version is **40.5774, -2.1651, 2.2046**.

A 20% lighter version of the original color is **61.0836, 55.1596, -0.7615**, and **27.3433, 48.6840, 3.2672** is the 20% darker color. If you saturate the color by 10%, you get **41.1521, 64.7638, 5.1059**, and if you desaturate by 10%, it is **46.9339, 52.3162, 0.5618**.

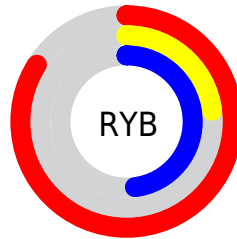
Distribution



Red (84%)

Green (23%)

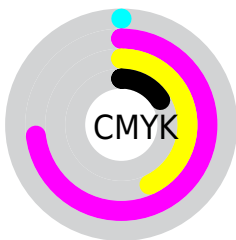
Blue (48%)



Red (84%)

Yellow (23%)

Blue (48%)

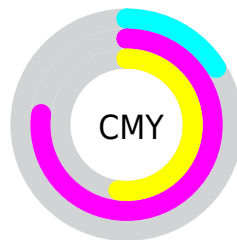


Cyan (0%)

Magenta (73%)

Yellow (43%)

Black (16%)



Cyan (16%)

Magenta (77%)

Yellow (52%)

Brightness & Saturation Gradients

These gradients show how the HunterLab color 43.5948, 59.4977, 2.4192 changes by changing the brightness by 10 percent. The first figure shows a shift by +10% for each color and the second figure -10%.

Similar to the brightness gradients but the following saturation gradients show a change of the HunterLab color 43.5948, 59.4977, 2.4192 by changing the saturation by 10% instead.

■ 43.5948, 59.4977,
2.4192

■ 43.5948, 59.4977,
2.4192

156.9976, 75.4831,
8.6184

■ 34.1683, 57.2887,
1.9035

■ 64.6099, 63.7044,
3.5709

■ 25.5393, 55.0995,
1.4298

■ 76.1053, 65.6700,
4.1996

■ 17.7915, 53.1151,
1.0035

■ 88.2115, 67.5366,
4.8615

■ 11.0393, 51.8948,
0.6308

■ 100.8992, 69.3058,
5.5549

■ 2.7726, 119.6126,
0.2474

■ 114.1429, 70.9809,
6.2784

0.0000, INF, NaN

0.0000, NaN, NaN

127.9201, 72.5660,

7.0308

0.0000, NaN, NaN

142.2110, 74.0654,
7.8112

0.0000, NaN, NaN

■ 43.5948, 59.4977,
2.4192

■ 43.5948, 59.4977,
2.4192

■ 41.1521, 64.7638,
5.1059

■ 46.9339, 52.3162,
0.5618

■ 39.6144, 67.6435,
8.4330

■ 51.0895, 43.8865,
-0.4387

■ 38.9293, 68.4859,
11.0604

■ 55.9594, 34.7907,
-0.6542

■ 61.4379, 25.4455,
-0.2040

■ 67.4297, 16.1030,
0.7880

■ 73.8547, 6.8938,
2.2124

■ 80.6475, -2.1273,
3.9809

■ 87.7556, -10.9488,
6.0242

■ 95.1370, -19.5814,
8.2897

Harmonies

Analogous

The Analogous color harmony consists of three colors that are next to each other on the color wheel.



43.5960, 49.7686, -28.5178



43.5948, 59.4977, 2.4192



43.5960, 49.6976, 20.0589

Triad

The Triadic color harmony groups three colors that are evenly spaced from another and form a triangle on the color wheel.



43.5960, 59.4939, 2.4204



43.5960, -24.5754, 26.6884



43.5960, -24.5074, -61.8815

Complementary

The Complementary color scheme is a pair of colors which are on the opposite of each other on the color wheel.



43.5948, 59.4977, 2.4192



71.9483, -47.2850, 19.3759

Split Complementary

Split-complementary colors differ from the complementary color scheme. The scheme consists of three colors, the original color and two neighbors of the complement color.



43.5960, -37.6046, -28.6524



43.5948, 59.4977, 2.4192



43.5960, -37.6369, 20.0164

Square

The Square scheme is like the rectangle color scheme, but the four colors are evenly spaced on the color wheel.



43.5960, 59.4939, 2.4204



43.5960, -2.3783, 28.1386



43.5960, -41.7918, 2.3256



43.5960, -2.2787, -76.5666

Rectangle

The Rectangle color scheme consists of four colors that form a rectangle on the color wheel.



43.5948, 59.4977, 2.4192



43.5960, 34.4778, 25.3114



43.5960, -41.7918, 2.3256



43.5960, -29.9185, -51.8215

Sweetspot

The Sweet Spot groups the original color and five complimentary colors.



43.5960, 59.4939, 2.4204



82.0549, 19.1513, 1.0067



38.1048, 57.0270, -75.5551



37.0134, 10.2899, 0.2845

0.0000, NaN, NaN



46.2646, -2.4686, 2.5136

Same Dimension

The Same Dimension uses a secret algorithm to generate beautiful new colors.



43.5960, 59.4939, 2.4204



48.8009, 80.7908, 8.2545



44.0442, 49.0928, 22.4274



35.3616, 1.8833, 1.2727



30.1403, 53.0869, 8.0754



7.5110, 13.4349, 0.4192

Inverse Universe

The Inverse Universe completely reimagines the original color for something new.



43.5960, 59.4939, 2.4204



48.8009, 80.7908, 8.2545



69.3382, -30.7491, -12.7858



35.3616, 1.8833, 1.2727



30.1403, 53.0869, 8.0754



7.5110, 13.4349, 0.4192

Previews

White Background



This preview shows how the HunterLab color 43.5948, 59.4977, 2.4192 looks on a white background.

Color Contrast Check

Large Text (above 18pt) WCAG AA ✓ Pass

Any Text WCAG AA × Fail

Large Text (above 18pt) WCAG AAA × Fail

Any Text WCAG AAA × Fail

Black Background



This preview shows how the HunterLab color 43.5948, 59.4977, 2.4192 looks on a black background.

Color Contrast Check

Large Text (above 18pt) WCAG AA ✓ Pass

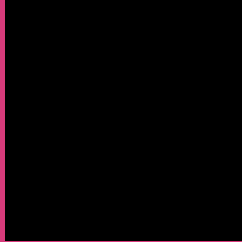
Any Text WCAG AA ✓ Pass

Large Text (above 18pt) WCAG AAA ✓ Pass

Any Text WCAG AAA × Fail

If you want to check with other color combinations, try the [Color Contrast Checker](#).

HunterLab 43.5948, 59.4977, 2.4192 Background



This preview shows how black text looks on a background with the HunterLab color 43.5948, 59.4977, 2.4192.



This preview shows how white text looks on a background with the HunterLab color 43.5948, 59.4977,

Color Blindness Simulation

Color vision deficiency is a very complex topic, and I could not describe the different causes any better than Wikipedia does, so if you want to learn more, you should check out their [article about color blindness](#).

Dichromacy



Original Color

43.5948, 59.4977, 2.4192

Protanopia

43.9158, 2.3745, -17.7983

Deuteranopia

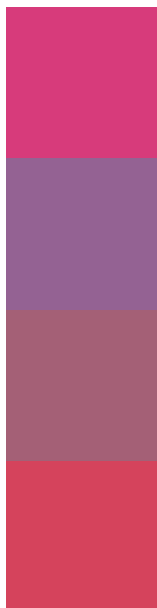
43.7165, 2.9028, 4.9909



Tritanopia

43.6022, 49.2728, 18.6785

Trichromacy



Original Color

43.5948, 59.4977, 2.4192

Protanomaly

41.3979, 21.7534, -13.6441

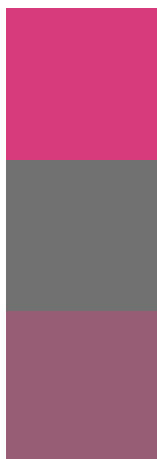
Deuteranomaly

41.9121, 23.5982, 1.9931

Tritanomaly

43.5122, 52.5815, 13.9359

Monochromacy



Original Color

43.5948, 59.4977, 2.4192

Achromatopsia

40.6365, -2.1683, 2.2079

Achromatomaly

39.4931, 19.9397, -0.5813

CSS Examples

Text

The CSS property to change the color of the text to HunterLab 43.5948, 59.4977, 2.4192 is called "color". The color property can be set on classes, ids or directly on the HTML element.

This example shows how text in the color `rgb(215, 59, 123)` looks like.

```
.text, #text, p{  
    color:rgb(215, 59, 123)  
}
```

If you want to add a text shadow in that color use the text-shadow property, you can generate a text shadow directly with our [CSS Text Shadow Generator](#).

Here you see how black text with a 4 pixel rgb(215, 59, 123) colored shadow looks like.

```
.shadow{ text-shadow: 4px 4px 2px rgb(215, 59, 123) }
```

Border

The CSS property to change the border of an element to HunterLab 43.5948, 59.4977, 2.4192 is called "border". The border property can be set on classes, ids or directly on the HTML element.

This example shows the color as border, it can be applied via the CSS property "border" or "border-color".

```
.border, #border, table{ border:4px solid rgb(215, 59, 123) }
```


If only the border color should be changed use the property `border-color`.

```
.border{ border-color:rgb(215, 59, 123) }
```

If you want to add a box shadow in that color use:

Here you see how a box with a 4 pixel `rgb(215, 59, 123)` colored shadow looks like.

```
.boxshadow{ -moz-box-shadow:4px 4px 4px  
4px rgb(215, 59, 123); -webkit-box-  
shadow:4px 4px 4px 4px rgb(215, 59, 123);  
box-shadow:4px 4px 4px 4px rgb(215, 59,  
123) }
```

Background

The CSS property to change the background color of an element to HunterLab 43.5948, 59.4977, 2.4192 is called "background". The background property can be set on classes, ids or directly on the HTML element.

```
.background, #background, body{  
background: rgb(215, 59, 123) }
```

If only the background color should be changed can be used:

```
.background{ background-color: rgb(215, 59,  
123) }
```

This example shows the color as background, it is applied via the CSS property "background".

To optimize and compress your CSS code, you can use our [online CSS compressor and optimizer](#) based on csstidy. If you want to create a linear or radial gradient as background or border, check our [CSS Gradient Generator](#).

Hey! You found this booklet interesting? Support Converting Colors with the new Membership Option!

The pro membership hides all ads, plus gives you double the colors in the color bucket, and more awesome pro features!

[Learn more, Memberships starting at \\$2.50/m!](#)

**Follow me
on Twitter!**

@ConvertingColor