

Converting Colors

HunterLab(43.6841, 63.6312,
6.5621)

Have a look what the booklet for
HunterLab(43.6841, 63.6312,
6.5621) contains.

HunterLab(43.7174, 63.7276, 6.4639)	3
<i>Conversions</i>	4
<i>Details</i>	6
<i>Harmonies</i>	12
<i>Previews</i>	24
<i>Color Blindness Simulation</i>	28
<i>CSS Examples</i>	31

Color

**HunterLab(43.7174, 63.7276,
6.4639)**

Conversions

Conversions Part 1

Format	Color
Hex	DE3372
RGB	222, 51, 114
RGB Percent	87%, 20%, 45%
CMY	0.1294, 0.8000, 0.5529
CMYK	0.00, 0.77, 0.49, 0.13
HSL	338°, 72%, 54%
HSV	338°, 77%, 87%
XYZ	34.3452, 19.1121, 17.7983
YIQ	109.3110, 81.6930, 55.8450

Conversions

Conversions Part 2

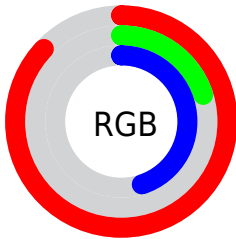
Format	Color
R _{YB}	222, 51, 114
Decimal	14562162
CIE _{Lab}	50.82, 68.12, 5.85
CIE _{LCh}	51, 68.371, 4.909
Yxy	19.1132, 0.4820, 0.2682
Android (android.graphics.Color)	4292752242 (0xFFDE3372)
YUV	109.3110, 2.3117, 98.8283
Hunter-Lab	43.7174, 63.7276, 6.4639

Details

The HunterLab color **43.7174, 63.7276, 6.4639** is a dark color, and the websafe version is hex **CC3366**. The color can be described as dark muted rose. A complement of this color would be **74.4648, -49.4205, 18.8987**, and the grayscale version is **39.1963, -2.0914, 2.1296**.

A 20% lighter version of the original color is **59.8527, 56.3869, 2.1308**, and **28.2319, 49.7413, 7.4427** is the 20% darker color. If you saturate the color by 10%, you get **41.6158, 68.1081, 9.6667**, and if you desaturate by 10%, it is **46.7779, 57.1077, 3.9298**.

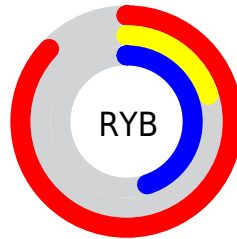
Distribution



Red (87%)

Green (20%)

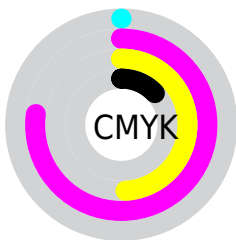
Blue (45%)



Red (87%)

Yellow (20%)

Blue (45%)

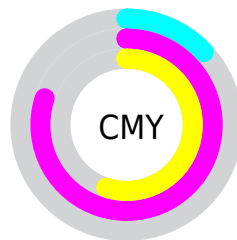


Cyan (0%)

Magenta (77%)

Yellow (49%)

Black (13%)



Cyan (13%)

Magenta (80%)

Yellow (55%)

Brightness & Saturation Gradients

These gradients show how the HunterLab color 43.7174, 63.7276, 6.4639 changes by changing the brightness by 10 percent. The first figure shows a shift by +10% for each color and the second figure -10%.

Similar to the brightness gradients but the following saturation gradients show a change of the HunterLab color 43.7174, 63.7276, 6.4639 by changing the saturation by 10% instead.

43.7174, 63.7276,
6.4639

43.7174, 63.7276,
6.4639

157.1856, 80.6292,
15.0020

34.2813, 61.4510,
5.5991

64.7498, 68.1154,
8.2369

25.6420, 59.2287,
4.7406

76.2529, 70.1825,
9.1474

17.8825, 57.2805,
3.8802

88.3666, 72.1537,
10.0759

11.1170, 56.2563,
3.0079

101.0614, 74.0290,
11.0231

3.0118, 120.0310,
2.1083

114.3119, 75.8105,
11.9892

0.0000, INF, NaN

0.0000, NaN, NaN

128.0957, 77.5019,

12.9743

0.0000, NaN, NaN

142.3928, 79.1067,
13.9786

0.0000, NaN, NaN

■ 43.7174, 63.7276,
6.4639

■ 43.7174, 63.7276,
6.4639

■ 41.6158, 68.1081,
9.6667

■ 46.7779, 57.1077,
3.9298

■ 40.4280, 69.9818,
13.2386

■ 50.7374, 48.9064,
2.1950

■ 40.1689, 70.2986,
14.2649

■ 55.4958, 39.7855,
1.2585

■ 60.9398, 30.2591,
1.0373

■ 66.9626, 20.6568,
1.4185

73.4726, 11.1594,
2.2911

80.3942, 1.8495,
3.5592

87.6667, -7.2479,
5.1455

95.2417, -16.1382,
6.9892

Harmonies

Analogous

The Analogous color harmony consists of three colors that are next to each other on the color wheel.



43.7187, 56.5251, -24.7413



43.7174, 63.7276, 6.4639



43.7187, 49.9633, 22.4753

Triad

The Triadic color harmony groups three colors that are evenly spaced from another and form a triangle on the color wheel.



43.7187, 63.7234, 6.4651



43.7187, -28.6437, 26.7857



43.7187, -22.5558, -71.9685

Complementary

The Complementary color scheme is a pair of colors which are on the opposite of each other on the color wheel.



43.7174, 63.7276, 6.4639



74.4648, -49.4205, 18.8987

Split Complementary

Split-complementary colors differ from the complementary color scheme. The scheme consists of three colors, the original color and two neighbors of the complement color.



43.7187, -37.7676, -37.2488



43.7174, 63.7276, 6.4639



43.7187, -40.6259, 18.7755

Square

The Square scheme is like the rectangle color scheme, but the four colors are evenly spaced on the color wheel.



43.7187, 63.7234, 6.4651



43.7187, -6.7641, 28.6762



43.7187, -43.4980, -2.1424



43.7187, 2.2777, -83.1229

Rectangle

The Rectangle color scheme consists of four colors that form a rectangle on the color wheel.



43.7174, 63.7276, 6.4639



43.7187, 32.3643, 26.7615



43.7187, -43.4980, -2.1424



43.7187, -28.7462, -61.9340

Sweetspot

The Sweet Spot groups the original color and five complimentary colors.



43.7187, 63.7234, 6.4651



81.2143, 19.8771, 1.9906



38.4136, 63.6653, -81.8793



36.3168, 11.0770, 0.7750

0.0000, NaN, NaN



46.2646, -2.4686, 2.5136

Same Dimension

The Same Dimension uses a secret algorithm to generate beautiful new colors.



43.7187, 63.7234, 6.4651



47.7832, 81.2763, 13.6682



45.0224, 51.9371, 24.5254



37.1263, 1.9308, 1.5191



30.9900, 54.2959, 10.5319



8.2617, 14.6710, 1.2874

Inverse Universe

The Inverse Universe completely reimagines the original color for something new.



43.7187, 63.7234, 6.4651



47.7832, 81.2763, 13.6682



69.4573, -29.8471, -16.7143



37.1263, 1.9308, 1.5191



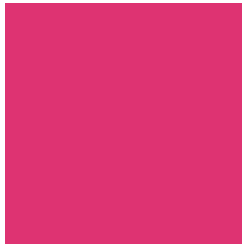
30.9900, 54.2959, 10.5319



8.2617, 14.6710, 1.2874

Previews

White Background



This preview shows how the HunterLab color 43.7174, 63.7276, 6.4639 looks on a white background.

Color Contrast Check

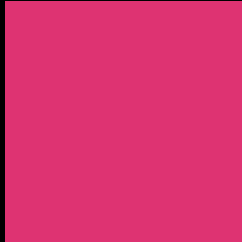
Large Text (above 18pt) WCAG AA ✓ Pass

Any Text WCAG AA × Fail

Large Text (above 18pt) WCAG AAA × Fail

Any Text WCAG AAA × Fail

Black Background



This preview shows how the HunterLab color 43.7174, 63.7276, 6.4639 looks on a black background.

Color Contrast Check

Large Text (above 18pt) WCAG AA ✓ Pass

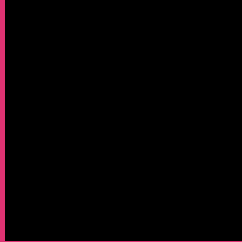
Any Text WCAG AA ✓ Pass

Large Text (above 18pt) WCAG AAA ✓ Pass

Any Text WCAG AAA × Fail

If you want to check with other color combinations, try the [Color Contrast Checker](#).

HunterLab 43.7174, 63.7276, 6.4639 Background



This preview shows how black text looks on a background with the HunterLab color 43.7174, 63.7276, 6.4639.



This preview shows how white text looks on a background with the HunterLab color 43.7174, 63.7276,

Color Blindness Simulation

Color vision deficiency is a very complex topic, and I could not describe the different causes any better than Wikipedia does, so if you want to learn more, you should check out their [article about color blindness](#).

Dichromacy



Original Color

43.7174, 63.7276, 6.4639

Protanopia

43.9434, 1.9256, -13.5504

Deuteranopia

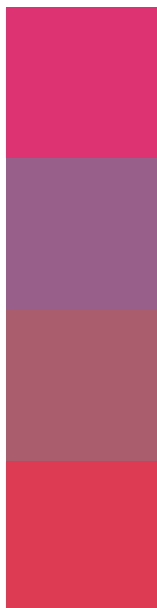
43.8773, 2.9926, 8.6639



Tritanopia

43.5987, 54.6103, 20.8120

Trichromacy



Original Color

43.7174, 63.7276, 6.4639

Protanomaly

41.0132, 23.4948, -9.6277

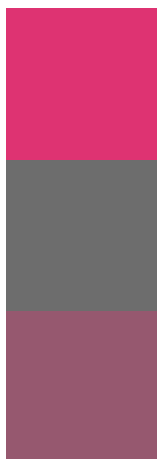
Deuteranomaly

41.6747, 25.7399, 5.5470

Tritanomaly

43.5524, 57.5608, 16.7037

Monochromacy



Original Color

43.7174, 63.7276, 6.4639

Achromatopsia

39.1058, -2.0866, 2.1247

Achromatomaly

38.2246, 21.5368, 0.6040

CSS Examples

Text

The CSS property to change the color of the text to HunterLab 43.7174, 63.7276, 6.4639 is called "color". The color property can be set on classes, ids or directly on the HTML element.

This example shows how text in the color `rgb(222, 51, 114)` looks like.

```
.text, #text, p{  
    color:rgb(222, 51, 114)  
}
```

If you want to add a text shadow in that color use the text-shadow property, you can generate a text shadow directly with our [CSS Text Shadow Generator](#).

Here you see how black text with a 4 pixel rgb(222, 51, 114) colored shadow looks like.

```
.shadow{ text-shadow: 4px 4px 2px rgb(222, 51, 114) }
```

Border

The CSS property to change the border of an element to HunterLab 43.7174, 63.7276, 6.4639 is called "border". The border property can be set on classes, ids or directly on the HTML element.

This example shows the color as border, it can be applied via the CSS property "border" or "border-color".

```
.border, #border, table{ border:4px solid rgb(222, 51, 114) }
```


If only the border color should be changed use the property `border-color`.

```
.border{ border-color:rgb(222, 51, 114) }
```

If you want to add a box shadow in that color use:

Here you see how a box with a 4 pixel `rgb(222, 51, 114)` colored shadow looks like.

```
.boxshadow{ -moz-box-shadow:4px 4px 4px  
4px rgb(222, 51, 114); -webkit-box-  
shadow:4px 4px 4px 4px rgb(222, 51, 114);  
box-shadow:4px 4px 4px 4px rgb(222, 51,  
114) }
```

Background

The CSS property to change the background color of an element to HunterLab 43.7174, 63.7276, 6.4639 is called "background". The background property can be set on classes, ids or directly on the HTML element.

```
.background, #background, body{  
background: rgb(222, 51, 114) }
```

If only the background color should be changed can be used:

```
.background{ background-color: rgb(222, 51,  
114) }
```

This example shows the color as background, it is applied via the CSS property "background".

To optimize and compress your CSS code, you can use our [online CSS compressor and optimizer](#) based on csstidy. If you want to create a linear or radial gradient as background or border, check our [CSS Gradient Generator](#).

Hey! You found this booklet interesting? Support Converting Colors with the new Membership Option!

The pro membership hides all ads, plus gives you double the colors in the color bucket, and more awesome pro features!

[Learn more, Memberships starting at \\$2.50/m!](#)

**Follow me
on Twitter!**

@ConvertingColor