

Converting Colors

HunterLab(43.7660, 16.2865,
7.1542)

Have a look what the booklet for
HunterLab(43.7660, 16.2865,
7.1542) contains.

HunterLab(43.8386, 15.9967, 7.3419)	3
<i>Conversions</i>	4
<i>Details</i>	6
<i>Harmonies</i>	12
<i>Previews</i>	24
<i>Color Blindness Simulation</i>	28
<i>CSS Examples</i>	31

Color

**HunterLab(43.8386, 15.9967,
7.3419)**

Conversions

Conversions Part 1

Format	Color
Hex	A16B6E
RGB	161, 107, 110
RGB Percent	63%, 42%, 43%
CMY	0.3686, 0.5804, 0.5686
CMYK	0.00, 0.34, 0.32, 0.37
HSL	357°, 22%, 53%
HSV	357°, 34%, 63%
XYZ	22.7701, 19.2182, 17.2612
YIQ	123.4880, 31.2210, 12.3810

Conversions

Conversions Part 2

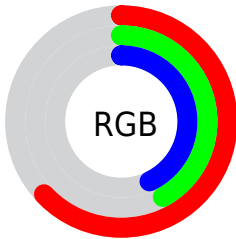
Format	Color
R_{YB}	161, 107, 110
Decimal	10578798
CIE _{Lab}	50.94, 21.99, 7.17
CIE _{LCh}	51, 23.133, 18.067
Yxy	19.2191, 0.3843, 0.3244
Android (android.graphics.Color)	4288768878 (0xFFA16B6E)
YUV	123.4880, -6.6496, 32.8980
Hunter-Lab	43.8386, 15.9967, 7.3419

Details

The HunterLab color **43.8386, 15.9967, 7.3419** is a dark color, and the websafe version is hex **996666**. A complement of this color would be **55.7536, -17.5909, -0.3541**, and the grayscale version is **44.7126, -2.3858, 2.4293**.

A 20% lighter version of the original color is **64.9008, 16.9178, 9.4846**, and **25.8359, 14.5188, 5.3823** is the 20% darker color. If you saturate the color by 10%, you get **39.8313, 22.1059, 8.8883**, and if you desaturate by 10%, it is **48.2233, 10.0309, 5.9505**.

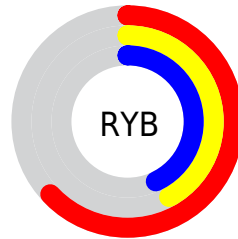
Distribution



Red (63%)

Green (42%)

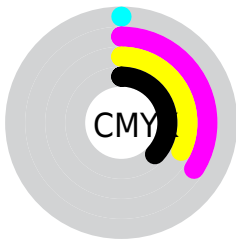
Blue (43%)



Red (63%)

Yellow (42%)

Blue (43%)

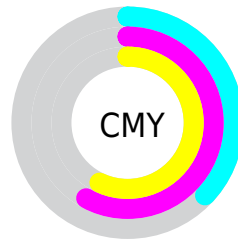


Cyan (0%)

Magenta (34%)

Yellow (32%)

Black (37%)



Cyan (37%)

Magenta (58%)

Yellow (57%)

Brightness & Saturation Gradients

These gradients show how the HunterLab color 43.8386, 15.9967, 7.3419 changes by changing the brightness by 10 percent. The first figure shows a shift by +10% for each color and the second figure -10%.

Similar to the brightness gradients but the following saturation gradients show a change of the HunterLab color 43.8386, 15.9967, 7.3419 by changing the saturation by 10% instead.

43.8386, 15.9967,
7.3419

43.8386, 15.9967,
7.3419

157.3709, 18.4909,
16.4346

34.3929, 15.2959,
6.3926

64.8877, 17.0758,
9.2633

25.7433, 14.4708,
5.4406

76.3986, 17.4817,
10.2409

17.9723, 13.4994,
4.4738

88.5196, 17.8098,
11.2327

11.1937, 12.3638,
3.5058

101.2214, 18.0670,
12.2400

3.2304, 29.4936,
2.2613

114.4786, 18.2592,
13.2633

0.0000, NaN, NaN

0.0000, NaN, NaN

128.2688, 18.3913,

14.3034

0.0000, NaN, NaN

142.5721, 18.4673,
15.3604

0.0000, NaN, NaN

■ 43.8386, 15.9967,
7.3419

■ 43.8386, 15.9967,
7.3419

■ 39.8313, 22.1059,
8.8883

■ 48.2233, 10.0309,
5.9505

■ 36.2709, 28.2271,
10.5683

■ 52.9218, 4.2713,
4.7089

■ 33.2403, 34.1022,
12.3261

■ 57.8866, -1.2733,
3.6046

■ 30.8211, 39.3383,
14.0536

■ 63.0789, -6.6155,
2.6206

■ 29.0753, 43.4594,
15.5957

■ 68.4680, -11.7775,
1.7401

■ 28.0164, 46.0717,
16.7888

■ 74.0292, -16.7843,
0.9476

■ 27.5620, 47.2719,
17.2592

■ 79.7429, -21.6601,
0.2298

■ 85.5931, -26.4268,
-0.4248

■ 91.5667, -31.1034,
-1.0257

Harmonies

Analogous

The Analogous color harmony consists of three colors that are next to each other on the color wheel.



43.8396, 16.5698, -1.2801



43.8386, 15.9967, 7.3419



43.8396, 10.2650, 13.2522

Triad

The Triadic color harmony groups three colors that are evenly spaced from another and form a triangle on the color wheel.



43.8396, 15.9947, 7.3427



43.8396, -14.8718, 12.3032



43.8396, -5.9794, -17.7418

Complementary

The Complementary color scheme is a pair of colors which are on the opposite of each other on the color wheel.



43.8386, 15.9967, 7.3419



55.7536, -17.5909, -0.3541

Split Complementary

Split-complementary colors differ from the complementary color scheme. The scheme consists of three colors, the original color and two neighbors of the complement color.



43.8396, -13.6671, -12.2549



43.8386, 15.9967, 7.3419



43.8396, -18.5071, 5.7611

Square

The Square scheme is like the rectangle color scheme, but the four colors are evenly spaced on the color wheel.



43.8396, 15.9947, 7.3427



43.8396, -7.7527, 15.6777



43.8396, -18.0853, -3.2262



43.8396, 3.3455, -17.0706

Rectangle

The Rectangle color scheme consists of four colors that form a rectangle on the color wheel.



43.8386, 15.9967, 7.3419



43.8396, 4.5425, 15.4190



43.8396, -18.0853, -3.2262



43.8396, -8.8254, -16.5163

Sweetspot

The Sweet Spot groups the original color and five complimentary colors.



43.8396, 15.9947, 7.3427



73.0116, 3.1986, 5.7872



45.0532, 22.8770, -16.2112



33.7877, 1.9588, 2.8036



89.8524, -4.7943, 4.8819



37.4146, -1.9963, 2.0328

Same Dimension

The Same Dimension uses a secret algorithm to generate beautiful new colors.



43.8396, 15.9947, 7.3427



54.7433, 27.2924, 11.2985



49.7104, 4.1710, 14.1125



26.6309, 0.9115, 2.0442



24.6359, 42.2615, 15.3629



3.5962, 6.2190, 1.8559

Inverse Universe

The Inverse Universe completely reimagines the original color for something new.



43.8396, 15.9947, 7.3427



54.7433, 27.2924, 11.2985



48.7465, -6.4736, -11.0873



26.6309, 0.9115, 2.0442



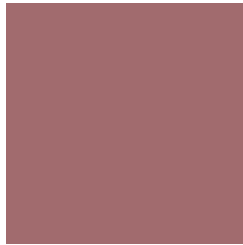
24.6359, 42.2615, 15.3629



3.5962, 6.2190, 1.8559

Previews

White Background



This preview shows how the HunterLab color 43.8386, 15.9967, 7.3419 looks on a white background.

Color Contrast Check

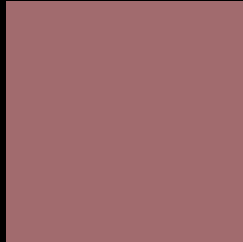
Large Text (above 18pt) WCAG AA ✓ Pass

Any Text WCAG AA × Fail

Large Text (above 18pt) WCAG AAA × Fail

Any Text WCAG AAA × Fail

Black Background



This preview shows how the HunterLab color 43.8386, 15.9967, 7.3419 looks on a black background.

Color Contrast Check

Large Text (above 18pt) WCAG AA ✓ Pass

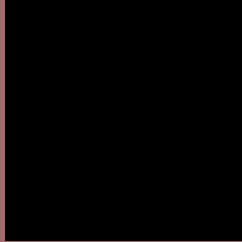
Any Text WCAG AA ✓ Pass

Large Text (above 18pt) WCAG AAA ✓ Pass

Any Text WCAG AAA × Fail

If you want to check with other color combinations, try the [Color Contrast Checker](#).

HunterLab 43.8386, 15.9967, 7.3419 Background



This preview shows how black text looks on a background with the HunterLab color 43.8386, 15.9967, 7.3419.



This preview shows how white text looks on a background with the HunterLab color 43.8386, 15.9967,

Color Blindness Simulation

Color vision deficiency is a very complex topic, and I could not describe the different causes any better than Wikipedia does, so if you want to learn more, you should check out their [article about color blindness](#).

Dichromacy



Original Color

43.8386, 15.9967, 7.3419

Protanopia

43.9804, -1.6179, 3.9663

Deuteranopia

43.8276, 2.9217, 7.8648



Tritanopia

43.7036, 17.0060, 5.6305

Trichromacy



Original Color

43.8386, 15.9967, 7.3419

Protanomaly

43.7400, 4.3438, 5.0425

Deuteranomaly

43.6181, 7.6411, 7.3447

Tritanomaly

43.6777, 16.8754, 6.0024

Monochromacy



Original Color

43.8386, 15.9967, 7.3419

Achromatopsia

44.5050, -2.3747, 2.4180

Achromatomaly

43.9874, 3.9698, 4.0722

CSS Examples

Text

The CSS property to change the color of the text to HunterLab 43.8386, 15.9967, 7.3419 is called "color". The color property can be set on classes, ids or directly on the HTML element.

This example shows how text in the color `rgb(161, 107, 110)` looks like.

```
.text, #text, p{  
    color:rgb(161, 107, 110)  
}
```

If you want to add a text shadow in that color use the text-shadow property, you can generate a text shadow directly with our [CSS Text Shadow Generator](#).

Here you see how black text with a 4 pixel rgb(161, 107, 110) colored shadow looks like.

```
.shadow{ text-shadow: 4px 4px 2px rgb(161, 107, 110) }
```

Border

The CSS property to change the border of an element to HunterLab 43.8386, 15.9967, 7.3419 is called "border". The border property can be set on classes, ids or directly on the HTML element.

This example shows the color as border, it can be applied via the CSS property "border" or "border-color".

```
.border, #border, table{ border:4px solid rgb(161, 107, 110) }
```


If only the border color should be changed use the property `border-color`.

```
.border{ border-color:rgb(161, 107, 110) }
```

If you want to add a box shadow in that color use:

Here you see how a box with a 4 pixel `rgb(161, 107, 110)` colored shadow looks like.

```
.boxshadow{ -moz-box-shadow:4px 4px 4px  
4px rgb(161, 107, 110); -webkit-box-  
shadow:4px 4px 4px 4px rgb(161, 107, 110);  
box-shadow:4px 4px 4px 4px rgb(161, 107,  
110) }
```

Background

The CSS property to change the background color of an element to HunterLab 43.8386, 15.9967, 7.3419 is called "background". The background property can be set on classes, ids or directly on the HTML element.

```
.background, #background, body{  
background: rgb(161, 107, 110) }
```

If only the background color should be changed can be used:

```
.background{ background-color: rgb(161,  
107, 110) }
```

This example shows the color as background, it is applied via the CSS property "background".

To optimize and compress your CSS code, you can use our [online CSS compressor and optimizer](#) based on csstidy. If you want to create a linear or radial gradient as background or border, check our [CSS Gradient Generator](#).

Hey! You found this booklet interesting? Support Converting Colors with the new Membership Option!

The pro membership hides all ads, plus gives you double the colors in the color bucket, and more awesome pro features!

[Learn more, Memberships starting at \\$2.50/m!](#)

**Follow me
on Twitter!**

@ConvertingColor