

Converting Colors

HunterLab(43.8198, 18.6690,
8.4011)

Have a look what the booklet for
HunterLab(43.8198, 18.6690,
8.4011) contains.

HunterLab(43.8995, 18.4499, 8.5872)	3
<i>Conversions</i>	4
<i>Details</i>	6
<i>Harmonies</i>	12
<i>Previews</i>	24
<i>Color Blindness Simulation</i>	28
<i>CSS Examples</i>	31

Color

**HunterLab(43.8995, 18.4499,
8.5872)**

Conversions

Conversions Part 1

Format	Color
Hex	A6696B
RGB	166, 105, 107
RGB Percent	65%, 41%, 42%
CMY	0.3490, 0.5882, 0.5804
CMYK	0.00, 0.37, 0.36, 0.35
HSL	358°, 26%, 53%
HSV	358°, 37%, 65%
XYZ	23.4313, 19.2717, 16.3947
YIQ	123.4670, 35.7140, 13.5540

Conversions

Conversions Part 2

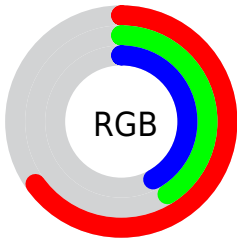
Format	Color
R_{YB}	166, 105, 107
Decimal	10905963
CIE _{Lab}	51.00, 24.70, 9.12
CIE _{LCh}	51, 26.333, 20.271
Yxy	19.2726, 0.3965, 0.3261
Android (android.graphics.Color)	4289096043 (0xFFA6696B)
YUV	123.4670, -8.1182, 37.3014
Hunter-Lab	43.8995, 18.4499, 8.5872

Details

The HunterLab color **43.8995, 18.4499, 8.5872** is a dark color, and the websafe version is hex **996666**. A complement of this color would be **57.4077, -19.1119, -1.2356**, and the grayscale version is **44.7088, -2.3855, 2.4291**.

A 20% lighter version of the original color is **65.0158, 19.8176, 10.9104**, and **25.8790, 16.5188, 6.4416** is the 20% darker color. If you saturate the color by 10%, you get **39.8841, 24.7911, 10.3160**, and if you desaturate by 10%, it is **48.3328, 12.2358, 6.9865**.

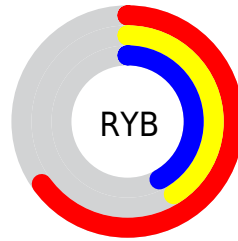
Distribution



Red (65%)

Green (41%)

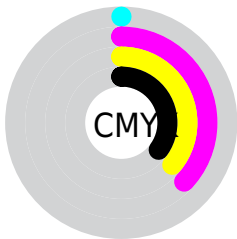
Blue (42%)



Red (65%)

Yellow (41%)

Blue (42%)

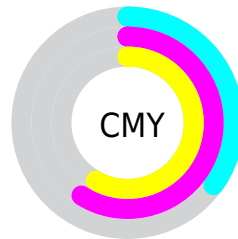


Cyan (0%)

Magenta (37%)

Yellow (36%)

Black (35%)



Cyan (35%)

Magenta (59%)

Yellow (58%)

Brightness & Saturation Gradients

These gradients show how the HunterLab color 43.8995, 18.4499, 8.5872 changes by changing the brightness by 10 percent. The first figure shows a shift by +10% for each color and the second figure -10%.

Similar to the brightness gradients but the following saturation gradients show a change of the HunterLab color 43.8995, 18.4499, 8.5872 by changing the saturation by 10% instead.

■ 43.8995, 18.4499,
8.5872

■ 43.8995, 18.4499,
8.5872

157.4641, 21.9252,
18.5072

■ 34.4491, 17.6193,
7.5114

■ 64.9571, 19.7742,
10.7313

■ 25.7943, 16.6602,
6.4187

■ 76.4719, 20.2959,
11.8091

■ 18.0176, 15.5534,
5.2912

■ 88.5965, 20.7358,
12.8953

■ 11.2323, 14.2898,
4.2277

■ 101.3019, 21.1011,
13.9920

■ 3.3349, 32.0986,
2.3345

114.5625, 21.3979,
15.1006

0.0000, NaN, NaN

0.0000, NaN, NaN

128.3559, 21.6314,

16.2222

0.0000, NaN, NaN

142.6624, 21.8059,
17.3576

0.0000, NaN, NaN

■ 43.8995, 18.4499,
8.5872

■ 43.8995, 18.4499,
8.5872

■ 39.8841, 24.7911,
10.3160

■ 48.3328, 12.2358,
6.9865

■ 36.3633, 31.0879,
12.1306

■ 53.1132, 6.2352,
5.5217

■ 33.4258, 37.0238,
13.9465

■ 58.1867, 0.4675,
4.1875

■ 31.1528, 42.1471,
15.6256

■ 63.5097, -5.0765,
2.9710

■ 29.5953, 45.9613,
16.9980

■ 69.0474, -10.4193,
1.8571

■ 28.7188, 48.2133,
17.9079

■ 74.7721, -15.5877,
0.8310

■ 28.4937, 48.8381,
18.0880

■ 80.6619, -20.6083,
-0.1204

■ 86.6987, -25.5054,
-1.0086

■ 92.8681, -30.3003,
-1.8433

Harmonies

Analogous

The Analogous color harmony consists of three colors that are next to each other on the color wheel.



43.9006, 19.5941, -1.0131



43.8995, 18.4499, 8.5872



43.9006, 11.4504, 14.8345

Triad

The Triadic color harmony groups three colors that are evenly spaced from another and form a triangle on the color wheel.



43.9006, 18.4478, 8.5880



43.9006, -16.9404, 13.0597



43.9006, -5.7347, -21.3251

Complementary

The Complementary color scheme is a pair of colors which are on the opposite of each other on the color wheel.



43.8995, 18.4499, 8.5872



57.4077, -19.1119, -1.2356

Split Complementary

Split-complementary colors differ from the complementary color scheme. The scheme consists of three colors, the original color and two neighbors of the complement color.



43.9006, -14.6223, -15.2812



43.8995, 18.4499, 8.5872



43.9006, -20.6745, 5.5401

Square

The Square scheme is like the rectangle color scheme, but the four colors are evenly spaced on the color wheel.



43.9006, 18.4478, 8.5880



43.9006, -9.1828, 16.9594



43.9006, -19.8681, -4.8693



43.9006, 4.9392, -19.9550

Rectangle

The Rectangle color scheme consists of four colors that form a rectangle on the color wheel.



43.8995, 18.4499, 8.5872



43.9006, 4.7464, 16.9982



43.9006, -19.8681, -4.8693



43.9006, -9.0126, -20.0475

Sweetspot

The Sweet Spot groups the original color and five complimentary colors.



43.9006, 18.4478, 8.5880



75.2951, 4.0568, 6.4223



45.5480, 27.0349, -18.4210



35.2000, 2.3953, 3.1483



92.0917, -4.9138, 5.0035



39.3538, -2.0998, 2.1382

Same Dimension

The Same Dimension uses a secret algorithm to generate beautiful new colors.



43.9006, 18.4478, 8.5880



54.7254, 31.7468, 13.4375



51.0204, 4.2243, 15.9803



27.4702, 0.9261, 2.1816



25.0942, 43.0168, 15.8876



3.9296, 6.7668, 2.2506

Inverse Universe

The Inverse Universe completely reimagines the original color for something new.



43.9006, 18.4478, 8.5880



54.7254, 31.7468, 13.4375



48.7859, -5.8645, -13.8850



27.4702, 0.9261, 2.1816



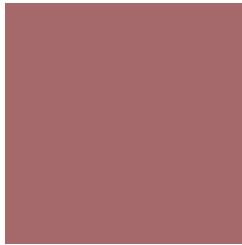
25.0942, 43.0168, 15.8876



3.9296, 6.7668, 2.2506

Previews

White Background



This preview shows how the HunterLab color 43.8995, 18.4499, 8.5872 looks on a white background.

Color Contrast Check

Large Text (above 18pt) WCAG AA ✓ Pass

Any Text WCAG AA × Fail

Large Text (above 18pt) WCAG AAA × Fail

Any Text WCAG AAA × Fail

Black Background



This preview shows how the HunterLab color 43.8995, 18.4499, 8.5872 looks on a black background.

Color Contrast Check

Large Text (above 18pt) WCAG AA ✓ Pass

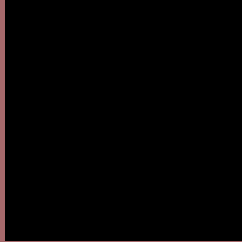
Any Text WCAG AA ✓ Pass

Large Text (above 18pt) WCAG AAA ✓ Pass

Any Text WCAG AAA × Fail

If you want to check with other color combinations, try the [Color Contrast Checker](#).

HunterLab 43.8995, 18.4499, 8.5872 Background



This preview shows how black text looks on a background with the HunterLab color 43.8995, 18.4499, 8.5872.



This preview shows how white text looks on a background with the HunterLab color 43.8995, 18.4499, 8.5872.

Color Blindness Simulation

Color vision deficiency is a very complex topic, and I could not describe the different causes any better than Wikipedia does, so if you want to learn more, you should check out their [article about color blindness](#).

Dichromacy



Original Color

43.8995, 18.4499, 8.5872

Protanopia

44.0129, -1.6123, 4.8341

Deuteranopia

43.9522, 3.1968, 9.1107



Tritanopia

43.7921, 19.5627, 6.5727

Trichromacy



Original Color

43.8995, 18.4499, 8.5872

Protanomaly

43.7224, 5.5289, 5.8529

Deuteranomaly

43.8639, 8.2931, 8.7428

Tritanomaly

43.7418, 19.3119, 7.2961

Monochromacy



Original Color

43.8995, 18.4499, 8.5872

Achromatopsia

44.5050, -2.3747, 2.4180

Achromatomaly

43.8909, 4.9509, 4.3977

CSS Examples

Text

The CSS property to change the color of the text to HunterLab 43.8995, 18.4499, 8.5872 is called "color". The color property can be set on classes, ids or directly on the HTML element.

This example shows how text in the color `rgb(166, 105, 107)` looks like.

```
.text, #text, p{  
    color:rgb(166, 105, 107)  
}
```

If you want to add a text shadow in that color use the text-shadow property, you can generate a text shadow directly with our [CSS Text Shadow Generator](#).

Here you see how black text with a 4 pixel rgb(166, 105, 107) colored shadow looks like.

```
.shadow{ text-shadow: 4px 4px 2px rgb(166, 105, 107) }
```

Border

The CSS property to change the border of an element to HunterLab 43.8995, 18.4499, 8.5872 is called "border". The border property can be set on classes, ids or directly on the HTML element.

This example shows the color as border, it can be applied via the CSS property "border" or "border-color".

```
.border, #border, table{ border:4px solid rgb(166, 105, 107) }
```


If only the border color should be changed use the property `border-color`.

```
.border{ border-color:rgb(166, 105, 107) }
```

If you want to add a box shadow in that color use:

Here you see how a box with a 4 pixel `rgb(166, 105, 107)` colored shadow looks like.

```
.boxshadow{ -moz-box-shadow:4px 4px 4px  
4px rgb(166, 105, 107); -webkit-box-  
shadow:4px 4px 4px 4px rgb(166, 105, 107);  
box-shadow:4px 4px 4px 4px rgb(166, 105,  
107) }
```

Background

The CSS property to change the background color of an element to HunterLab 43.8995, 18.4499, 8.5872 is called "background". The background property can be set on classes, ids or directly on the HTML element.

```
.background, #background, body{  
background: rgb(166, 105, 107) }
```

If only the background color should be changed can be used:

```
.background{ background-color: rgb(166,  
105, 107) }
```

This example shows the color as background, it is applied via the CSS property "background".

To optimize and compress your CSS code, you can use our [online CSS compressor and optimizer](#) based on csstidy. If you want to create a linear or radial gradient as background or border, check our [CSS Gradient Generator](#).

Hey! You found this booklet interesting? Support Converting Colors with the new Membership Option!

The pro membership hides all ads, plus gives you double the colors in the color bucket, and more awesome pro features!

[Learn more, Memberships starting at \\$2.50/m!](#)

**Follow me
on Twitter!**

@ConvertingColor