

Converting Colors

HunterLab(43.8552, 47.6791,
3.6264)

Have a look what the booklet for
HunterLab(43.8552, 47.6791,
3.6264) contains.

HunterLab(43.8423, 47.8743, 3.8233)	3
<i>Conversions</i>	4
<i>Details</i>	6
<i>Harmonies</i>	12
<i>Previews</i>	24
<i>Color Blindness Simulation</i>	28
<i>CSS Examples</i>	31

Color

**HunterLab(43.8423, 47.8743,
3.8233)**

Conversions

Conversions Part 1

Format	Color
Hex	CB4C78
RGB	203, 76, 120
RGB Percent	80%, 30%, 47%
CMY	0.2039, 0.7019, 0.5294
CMYK	0.00, 0.63, 0.41, 0.20
HSL	339°, 55%, 55%
HSV	339°, 63%, 80%
XYZ	30.6032, 19.2215, 19.8664
YIQ	118.9890, 61.5680, 40.6080

Conversions

Conversions Part 2

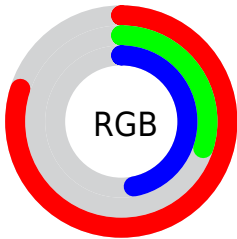
Format	Color
R_{YB}	203, 76, 120
Decimal	13323384
CIE _{Lab}	50.95, 54.14, 1.99
CIE _{LCh}	51, 54.175, 2.104
Yxy	19.2225, 0.4391, 0.2758
Android (android.graphics.Color)	4291513464 (0xFFCB4C78)
YUV	118.9890, 0.4984, 73.6776
Hunter-Lab	43.8423, 47.8743, 3.8233

Details

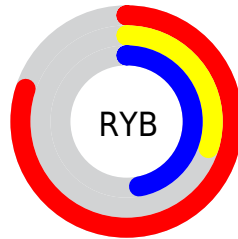
The HunterLab color **43.8423, 47.8743, 3.8233** is a dark color, and the websafe version is hex **CC3366**. The color can be described as dark muted rose. A complement of this color would be **68.3755, -39.7847, 12.9910**, and the grayscale version is **42.9290, -2.2906, 2.3324**.

A 20% lighter version of the original color is **63.6169, 48.0505, 3.6666**, and **25.6760, 43.8375, 2.4316** is the 20% darker color. If you saturate the color by 10%, you get **40.6848, 54.5813, 5.8616**, and if you desaturate by 10%, it is **47.7696, 40.0568, 2.4741**.

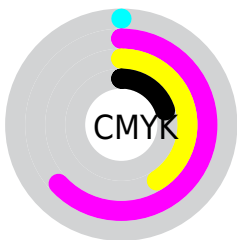
Distribution



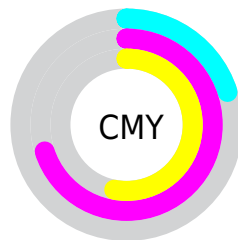
- Red (80%)
- Green (30%)
- Blue (47%)



- Red (80%)
- Yellow (30%)
- Blue (47%)



- Cyan (0%)
- Magenta (63%)
- Yellow (41%)
- Black (20%)



- Cyan (20%)
- Magenta (70%)
- Yellow (53%)

Brightness & Saturation Gradients

These gradients show how the HunterLab color 43.8423, 47.8743, 3.8233 changes by changing the brightness by 10 percent. The first figure shows a shift by +10% for each color and the second figure -10%.

Similar to the brightness gradients but the following saturation gradients show a change of the HunterLab color 43.8423, 47.8743, 3.8233 by changing the saturation by 10% instead.

43.8423, 47.8743,
3.8233

43.8423, 47.8743,
3.8233

157.3767, 60.9647,
10.7899

34.3965, 45.9190,
3.1944

64.8920, 51.4708,
5.1774

25.7465, 43.9008,
2.5967

76.4032, 53.1099,
5.8984

17.9752, 41.9137,
2.0317

88.5244, 54.6459,
6.6478

11.1961, 40.2681,
1.4984

101.2264, 56.0840,
7.4246

3.2370, 80.5959,
2.2659

114.4838, 57.4297,
8.2279

0.0000, INF, NaN

0.0000, NaN, NaN

128.2742, 58.6884,

9.0571

0.0000, NaN, NaN

142.5778, 59.8652,
9.9113

0.0000, NaN, NaN

■ 43.8423, 47.8743,
3.8233

■ 43.8423, 47.8743,
3.8233

■ 40.6848, 54.5813,
5.8616

■ 47.7696, 40.0568,
2.4741

■ 38.3683, 59.5749,
8.5150

■ 52.3640, 31.6754,
1.7819

■ 36.9098, 62.3861,
11.5830

■ 57.5263, 23.1021,
1.6674

■ 36.2530, 63.3154,
13.8832

■ 63.1669, 14.5593,
2.0356

■ 69.2107, 6.1592,
2.7977

■ 75.5966, -2.0539,
3.8786

■ 82.2756, -10.0739,
5.2179

■ 89.2087, -17.9136,
6.7681

■ 95.1171, -23.7762,
7.0942

Harmonies

Analogous

The Analogous color harmony consists of three colors that are next to each other on the color wheel.



43.8435, 41.1683, -20.6543



43.8423, 47.8743, 3.8233



43.8435, 39.0901, 18.7229

Triad

The Triadic color harmony groups three colors that are evenly spaced from another and form a triangle on the color wheel.



43.8435, 47.8710, 3.8244



43.8435, -22.4593, 24.5026



43.8435, -20.2719, -49.4667

Complementary

The Complementary color scheme is a pair of colors which are on the opposite of each other on the color wheel.



43.8423, 47.8743, 3.8233



68.3755, -39.7847, 12.9910

Split Complementary

Split-complementary colors differ from the complementary color scheme. The scheme consists of three colors, the original color and two neighbors of the complement color.



43.8435, -32.4858, -24.5162



43.8423, 47.8743, 3.8233



43.8435, -33.5645, 17.2379

Square

The Square scheme is like the rectangle color scheme, but the four colors are evenly spaced on the color wheel.



43.8435, 47.8710, 3.8244



43.8435, -3.8690, 26.4536



43.8435, -36.8449, 0.8982



43.8435, -0.7932, -59.0409

Rectangle

The Rectangle color scheme consists of four colors that form a rectangle on the color wheel.



43.8423, 47.8743, 3.8233



43.8435, 26.4732, 23.6258



43.8435, -36.8449, 0.8982



43.8435, -25.2216, -42.1490

Sweetspot

The Sweet Spot groups the original color and five complimentary colors.



43.8435, 47.8710, 3.8244



84.2696, 15.2237, 2.9087



40.9963, 48.3148, -55.6042



37.9585, 8.5103, 1.2329

0.0000, NaN, NaN



46.2646, -2.4686, 2.5136

Same Dimension

The Same Dimension uses a secret algorithm to generate beautiful new colors.



43.8435, 47.8710, 3.8244



51.4883, 73.1433, 8.6869



46.2742, 34.8618, 20.3618



33.5809, 1.6714, 1.4659



28.9476, 50.6086, 10.6822



6.6824, 11.8884, 0.8717

Inverse Universe

The Inverse Universe completely reimagines the original color for something new.



43.8435, 47.8710, 3.8244



51.4883, 73.1433, 8.6869



63.3319, -23.7652, -14.2853



33.5809, 1.6714, 1.4659



28.9476, 50.6086, 10.6822



6.6824, 11.8884, 0.8717

Previews

White Background



This preview shows how the HunterLab color 43.8423, 47.8743, 3.8233 looks on a white background.

Color Contrast Check

Large Text (above 18pt) WCAG AA ✓ Pass

Any Text WCAG AA × Fail

Large Text (above 18pt) WCAG AAA × Fail

Any Text WCAG AAA × Fail

Black Background



This preview shows how the HunterLab color 43.8423, 47.8743, 3.8233 looks on a black background.

Color Contrast Check

Large Text (above 18pt) WCAG AA ✓ Pass

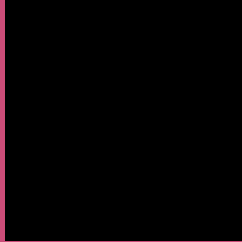
Any Text WCAG AA ✓ Pass

Large Text (above 18pt) WCAG AAA ✓ Pass

Any Text WCAG AAA × Fail

If you want to check with other color combinations, try the [Color Contrast Checker](#).

HunterLab 43.8423, 47.8743, 3.8233 Background



This preview shows how black text looks on a background with the HunterLab color 43.8423, 47.8743, 3.8233.



This preview shows how white text looks on a background with the HunterLab color 43.8423, 47.8743,

Color Blindness Simulation

Color vision deficiency is a very complex topic, and I could not describe the different causes any better than Wikipedia does, so if you want to learn more, you should check out their [article about color blindness](#).

Dichromacy



Original Color

43.8423, 47.8743, 3.8233

Protanopia

44.1524, 0.7851, -9.8475

Deuteranopia

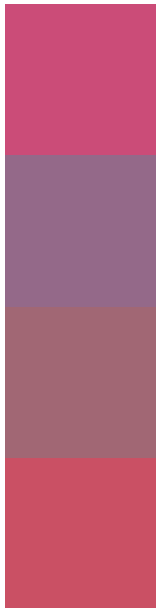
44.1476, 2.9283, 5.8749



Tritanopia

43.9416, 40.6713, 15.3312

Trichromacy



Original Color

43.8423, 47.8743, 3.8233

Protanomaly

42.6675, 16.4472, -6.3076

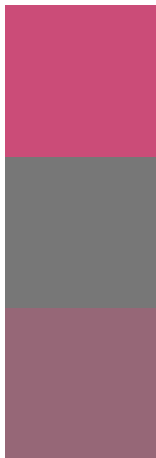
Deuteranomaly

43.0564, 18.7617, 4.1069

Tritanomaly

43.8338, 43.5270, 11.4643

Monochromacy



Original Color

43.8423, 47.8743, 3.8233

Achromatopsia

42.9506, -2.2917, 2.3336

Achromatomaly

41.8526, 15.2887, 1.3328

CSS Examples

Text

The CSS property to change the color of the text to HunterLab 43.8423, 47.8743, 3.8233 is called "color". The color property can be set on classes, ids or directly on the HTML element.

This example shows how text in the color `rgb(203, 76, 120)` looks like.

```
.text, #text, p{  
    color:rgb(203, 76, 120)  
}
```

If you want to add a text shadow in that color use the text-shadow property, you can generate a text shadow directly with our [CSS Text Shadow Generator](#).

Here you see how black text with a 4 pixel rgb(203, 76, 120) colored shadow looks like.

```
.shadow{ text-shadow: 4px 4px 2px rgb(203, 76, 120) }
```

Border

The CSS property to change the border of an element to HunterLab 43.8423, 47.8743, 3.8233 is called "border". The border property can be set on classes, ids or directly on the HTML element.

This example shows the color as border, it can be applied via the CSS property "border" or "border-color".

```
.border, #border, table{ border:4px solid rgb(203, 76, 120) }
```


If only the border color should be changed use the property border-color.

```
.border{ border-color:rgb(203, 76, 120) }
```

If you want to add a box shadow in that color use:

Here you see how a box with a 4 pixel rgb(203, 76, 120) colored shadow looks like.

```
.boxshadow{ -moz-box-shadow:4px 4px 4px  
4px rgb(203, 76, 120); -webkit-box-  
shadow:4px 4px 4px 4px rgb(203, 76, 120);  
box-shadow:4px 4px 4px 4px rgb(203, 76,  
120) }
```

Background

The CSS property to change the background color of an element to HunterLab 43.8423, 47.8743, 3.8233 is called "background". The background property can be set on classes, ids or directly on the HTML element.

```
.background, #background, body{  
background: rgb(203, 76, 120) }
```

If only the background color should be changed can be used:

```
.background{ background-color: rgb(203, 76,  
120) }
```

This example shows the color as background, it is applied via the CSS property "background".

To optimize and compress your CSS code, you can use our [online CSS compressor and optimizer](#) based on csstidy. If you want to create a linear or radial gradient as background or border, check our [CSS Gradient Generator](#).

Hey! You found this booklet interesting? Support Converting Colors with the new Membership Option!

The pro membership hides all ads, plus gives you double the colors in the color bucket, and more awesome pro features!

[Learn more, Memberships starting at \\$2.50/m!](#)

**Follow me
on Twitter!**

@ConvertingColor