

Converting Colors

HunterLab(43.8657, 3.2936,
12.5173)

Have a look what the booklet for
HunterLab(43.8657, 3.2936,
12.5173) contains.

HunterLab(43.7683, 3.4976, 12.3652)	3
<i>Conversions</i>	4
<i>Details</i>	6
<i>Harmonies</i>	12
<i>Previews</i>	24
<i>Color Blindness Simulation</i>	28
<i>CSS Examples</i>	31

Color

**HunterLab(43.7683, 3.4976,
12.3652)**

Conversions

Conversions Part 1

Format	Color
Hex	8F745F
RGB	143, 116, 95
RGB Percent	56%, 45%, 37%
CMY	0.4392, 0.5451, 0.6274
CMYK	0.00, 0.19, 0.34, 0.44
HSL	26°, 20%, 47%
HSV	26°, 34%, 56%
XYZ	19.6386, 19.1566, 13.4890
YIQ	121.6790, 22.8330, -0.8070

Conversions

Conversions Part 2

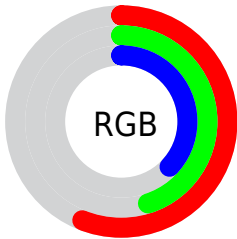
Format	Color
R_{YB}	143, 132, 95
Decimal	9401439
CIE _{Lab}	50.87, 7.36, 15.59
CIE _{LCh}	51, 17.241, 64.736
Yxy	19.1575, 0.3756, 0.3664
Android (android.graphics.Color)	4287591519 (0xFF8F745F)
YUV	121.6790, -13.1527, 18.6985
Hunter-Lab	43.7683, 3.4976, 12.3652

Details

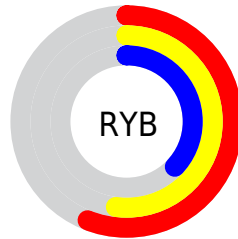
The HunterLab color $43.7683, 3.4976, 12.3652$ is a dark color, and the websafe version is hex 996666 . A complement of this color would be $42.8188, -5.5797, -9.6959$, and the grayscale version is $44.0347, -2.3496, 2.3925$.

A 20% lighter version of the original color is $64.8740, 3.3527, 15.1803$, and $25.7513, 3.7005, 9.2425$ is the 20% darker color. If you saturate the color by 10%, you get $41.4079, 5.8205, 14.5549$, and if you desaturate by 10%, it is $46.2355, 1.3885, 9.8523$.

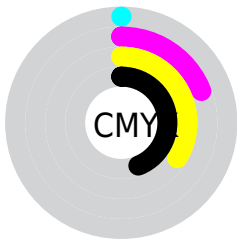
Distribution



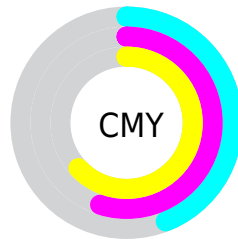
- Red (56%)
- Green (45%)
- Blue (37%)



- Red (56%)
- Yellow (52%)
- Blue (37%)



- Cyan (0%)
- Magenta (19%)
- Yellow (34%)
- Black (44%)



- Cyan (44%)
- Magenta (55%)
- Yellow (63%)

Brightness & Saturation Gradients

These gradients show how the HunterLab color 43.7683, 3.4976, 12.3652 changes by changing the brightness by 10 percent. The first figure shows a shift by +10% for each color and the second figure -10%.

Similar to the brightness gradients but the following saturation gradients show a change of the HunterLab color 43.7683, 3.4976, 12.3652 by changing the saturation by 10% instead.

■ 43.7683, 3.4976,
12.3652

■ 43.7683, 3.4976,
12.3652

157.2632, 0.4064,
25.1257

■ 34.3281, 3.5704,
10.8485

■ 64.8075, 3.1490,
15.2807

■ 25.6844, 3.5652,
9.2629

■ 76.3139, 2.8905,
16.7036

■ 17.9201, 3.4645,
7.5707

■ 88.4307, 2.5821,
18.1141

■ 11.1491, 3.2436,
6.6328

■ 101.1284, 2.2277,
19.5174

■ 3.1052, 10.1601,
2.1737

114.3817, 1.8304,
20.9176

0.0000, NaN, NaN

128.1682, 1.3929,

0.0000, NaN, NaN

22.3175

0.0000, NaN, NaN

142.4679, 0.9176,
23.7196

0.0000, NaN, NaN

■ 43.7683, 3.4976,
12.3652

■ 43.7683, 3.4976,
12.3652

■ 41.4079, 5.8205,
14.5549

■ 46.2355, 1.3885,
9.8523

■ 39.1617, 8.3712,
16.3802

■ 48.7971, -0.5147,
7.0508

■ 37.0421, 11.1508,
17.8012

■ 51.4457, -2.2283,
3.9938

■ 35.0614, 14.1519,
18.7799

■ 54.1738, -3.7677,
0.7099

■ 33.2318, 17.3520,
19.2874

■ 56.9748, -5.1477,
-2.7760

■ 31.5650, 20.7076,
19.3165

■ 59.8431, -6.3827,
-6.4427

■ 30.5736, 22.8715,
19.2397

■ 62.7734, -7.4859,
-10.2717

■ 65.7613, -8.4694,
-14.2471

■ 68.8027, -9.3443,
-18.3554

Harmonies

Analogous

The Analogous color harmony consists of three colors that are next to each other on the color wheel.



43.7693, 9.1602, 9.0073



43.7683, 3.4976, 12.3652



43.7693, -3.4325, 13.2263

Triad

The Triadic color harmony groups three colors that are evenly spaced from another and form a triangle on the color wheel.



43.7693, 3.4960, 12.3658



43.7693, -14.8419, 1.3230



43.7693, 5.5168, -9.3674

Complementary

The Complementary color scheme is a pair of colors which are on the opposite of each other on the color wheel.



43.7683, 3.4976, 12.3652



42.8188, -5.5797, -9.6959

Split Complementary

Split-complementary colors differ from the complementary color scheme. The scheme consists of three colors, the original color and two neighbors of the complement color.



43.7693, -1.2322, -12.2267



43.7683, 3.4976, 12.3652



43.7693, -12.7591, -5.4732

Square

The Square scheme is like the rectangle color scheme, but the four colors are evenly spaced on the color wheel.



43.7693, 3.4960, 12.3658



43.7693, -13.7486, 7.4547



43.7693, -7.8811, -10.7015



43.7693, 10.3769, -3.3803

Rectangle

The Rectangle color scheme consists of four colors that form a rectangle on the color wheel.



43.7683, 3.4976, 12.3652



43.7693, -7.7752, 12.4028



43.7693, -7.8811, -10.7015



43.7693, 3.3788, -10.7652

Sweetspot

The Sweet Spot groups the original color and five complimentary colors.



43.7693, 3.4960, 12.3658



66.4780, -1.4853, 8.0994



39.2866, 17.3271, -3.3742



31.6223, -0.5695, 4.1211



85.4018, -4.5568, 4.6400



33.5864, -1.7921, 1.8248

Same Dimension

The Same Dimension uses a secret algorithm to generate beautiful new colors.



43.7693, 3.4960, 12.3658



56.2580, 6.9134, 18.7268



50.3624, -7.5287, 18.1554



24.0584, -0.6209, 2.7643



28.8191, 21.3334, 18.1317



3.4933, 0.6363, 2.1637

Inverse Universe

The Inverse Universe completely reimagines the original color for something new.



42.8188, -5.5797, -9.6959



54.7221, -7.6714, -16.8375



36.3168, 5.5704, -19.9494



23.9301, -1.8562, -0.2240



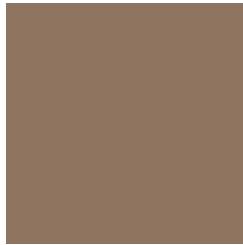
26.3138, 1.2257, -35.5359



3.3191, -1.0430, -1.8971

Previews

White Background



This preview shows how the HunterLab color 43.7683, 3.4976, 12.3652 looks on a white background.

Color Contrast Check

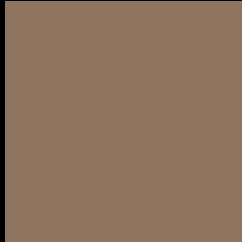
Large Text (above 18pt) WCAG AA ✓ Pass

Any Text WCAG AA × Fail

Large Text (above 18pt) WCAG AAA × Fail

Any Text WCAG AAA × Fail

Black Background



This preview shows how the HunterLab color 43.7683, 3.4976, 12.3652 looks on a black background.

Color Contrast Check

Large Text (above 18pt) WCAG AA ✓ Pass

Any Text WCAG AA ✓ Pass

Large Text (above 18pt) WCAG AAA ✓ Pass

Any Text WCAG AAA × Fail

If you want to check with other color combinations, try the [Color Contrast Checker](#).

HunterLab 43.7683, 3.4976, 12.3652 Background



This preview shows how black text looks on a background with the HunterLab color 43.7683, 3.4976, 12.3652.



This preview shows how white text looks on a background with the HunterLab color 43.7683, 3.4976,

Color Blindness Simulation

Color vision deficiency is a very complex topic, and I could not describe the different causes any better than Wikipedia does, so if you want to learn more, you should check out their [article about color blindness](#).

Dichromacy



Original Color

43.7683, 3.4976, 12.3652

Protanopia

43.8234, -3.1774, 11.6475

Deuteranopia

43.6667, 3.1573, 12.2624



Tritanopia

43.6804, 9.7820, 2.5335

Trichromacy



Original Color

43.7683, 3.4976, 12.3652

Protanomaly

43.7110, -0.7849, 11.9103

Deuteranomaly

43.6667, 3.1573, 12.2624

Tritanomaly

43.5888, 7.6968, 6.1430

Monochromacy



Original Color

43.7683, 3.4976, 12.3652

Achromatopsia

44.1155, -2.3539, 2.3969

Achromatomaly

43.9871, -0.4959, 6.4337

CSS Examples

Text

The CSS property to change the color of the text to HunterLab 43.7683, 3.4976, 12.3652 is called "color". The color property can be set on classes, ids or directly on the HTML element.

This example shows how text in the color `rgb(143, 116, 95)` looks like.

```
.text, #text, p{  
    color:rgb(143, 116, 95)  
}
```

If you want to add a text shadow in that color use the text-shadow property, you can generate a text shadow directly with our [CSS Text Shadow Generator](#).

Here you see how black text with a 4 pixel rgb(143, 116, 95) colored shadow looks like.

```
.shadow{ text-shadow: 4px 4px 2px rgb(143, 116, 95) }
```

Border

The CSS property to change the border of an element to HunterLab 43.7683, 3.4976, 12.3652 is called "border". The border property can be set on classes, ids or directly on the HTML element.

This example shows the color as border, it can be applied via the CSS property "border" or "border-color".

```
.border, #border, table{ border:4px solid rgb(143, 116, 95) }
```


If only the border color should be changed use the property `border-color`.

```
.border{ border-color:rgb(143, 116, 95) }
```

If you want to add a box shadow in that color use:

Here you see how a box with a 4 pixel `rgb(143, 116, 95)` colored shadow looks like.

```
.boxshadow{ -moz-box-shadow:4px 4px 4px  
4px rgb(143, 116, 95); -webkit-box-  
shadow:4px 4px 4px 4px rgb(143, 116, 95);  
box-shadow:4px 4px 4px 4px rgb(143, 116,  
95) }
```

Background

The CSS property to change the background color of an element to HunterLab 43.7683, 3.4976, 12.3652 is called "background". The background property can be set on classes, ids or directly on the HTML element.

```
.background, #background, body{  
background: rgb(143, 116, 95) }
```

If only the background color should be changed can be used:

```
.background{ background-color: rgb(143,  
116, 95) }
```

This example shows the color as background, it is applied via the CSS property "background".

To optimize and compress your CSS code, you can use our [online CSS compressor and optimizer](#) based on csstidy. If you want to create a linear or radial gradient as background or border, check our [CSS Gradient Generator](#).

Hey! You found this booklet interesting? Support Converting Colors with the new Membership Option!

The pro membership hides all ads, plus gives you double the colors in the color bucket, and more awesome pro features!

[Learn more, Memberships starting at \\$2.50/m!](#)

**Follow me
on Twitter!**

@ConvertingColor