

Converting Colors

HunterLab(43.8960, 4.1929,
9.8165)

Have a look what the booklet for
HunterLab(43.8960, 4.1929, 9.8165)
contains.

HunterLab(43.8416, 4.0916, 9.7331)	3
<i>Conversions</i>	4
<i>Details</i>	6
<i>Harmonies</i>	12
<i>Previews</i>	24
<i>Color Blindness Simulation</i>	28
<i>CSS Examples</i>	31

Color

**HunterLab(43.8416, 4.0916,
9.7331)**

Conversions

Conversions Part 1

Format	Color
Hex	8E7467
RGB	142, 116, 103
RGB Percent	56%, 45%, 40%
CMY	0.4431, 0.5451, 0.5961
CMYK	0.00, 0.18, 0.27, 0.44
HSL	20°, 16%, 48%
HSV	20°, 27%, 56%
XYZ	19.8489, 19.2209, 15.4958
YIQ	122.2920, 19.6690, 1.4690

Conversions

Conversions Part 2

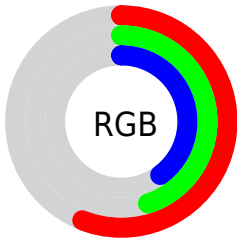
Format	Color
R_{YB}	142, 123, 103
Decimal	9335911
CIE _{Lab}	50.95, 8.09, 11.00
CIE _{LCh}	51, 13.656, 53.681
Yxy	19.2217, 0.3638, 0.3523
Android (android.graphics.Color)	4287525991 (0xFF8E7467)
YUV	122.2920, -9.5110, 17.2839
Hunter-Lab	43.8416, 4.0916, 9.7331

Details

The HunterLab color $43.8416, 4.0916, 9.7331$ is a dark color, and the websafe version is hex 996666 . A complement of this color would be $45.3172, -7.1205, -5.6824$, and the grayscale version is $44.2605, -2.3616, 2.4048$.

A 20% lighter version of the original color is $64.8646, 3.7183, 12.0899$, and $25.7758, 4.0282, 7.3474$ is the 20% darker color. If you saturate the color by 10%, you get $41.0951, 6.9625, 11.8720$, and if you desaturate by 10%, it is $46.7186, 1.4251, 7.3757$.

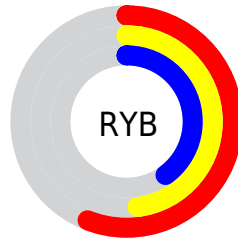
Distribution



Red (56%)

Green (45%)

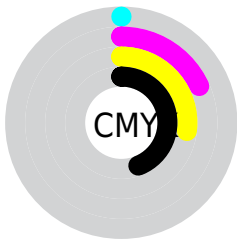
Blue (40%)



Red (56%)

Yellow (48%)

Blue (40%)

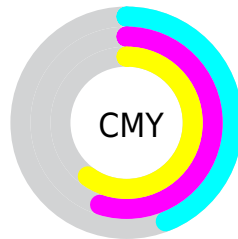


Cyan (0%)

Magenta (18%)

Yellow (27%)

Black (44%)



Cyan (44%)

Magenta (55%)

Yellow (60%)

Brightness & Saturation Gradients

These gradients show how the HunterLab color 43.8416, 4.0916, 9.7331 changes by changing the brightness by 10 percent. The first figure shows a shift by +10% for each color and the second figure -10%.

Similar to the brightness gradients but the following saturation gradients show a change of the HunterLab color 43.8416, 4.0916, 9.7331 by changing the saturation by 10% instead.

■ 43.8416, 4.0916,
9.7331

■ 43.8416, 4.0916,
9.7331

157.3754, 1.2863,
20.4628

■ 34.3957, 4.1238,
8.5323

■ 64.8910, 3.8172,
12.0963

■ 25.7458, 4.0748,
7.3000

■ 76.4021, 3.5928,
13.2723

■ 17.9745, 3.9265,
6.0127

■ 88.5233, 3.3169,
14.4509

■ 11.1956, 3.6530,
4.9235

■ 101.2253, 2.9937,
15.6351

■ 3.2355, 10.7200,
2.2649

114.4826, 2.6264,
16.8270

0.0000, NaN, NaN

0.0000, NaN, NaN

128.2730, 2.2178,

18.0282

0.0000, NaN, NaN

142.5765, 1.7704,
19.2398

0.0000, NaN, NaN

■ 43.8416, 4.0916,
9.7331

■ 43.8416, 4.0916,
9.7331

■ 41.0951, 6.9625,
11.8720

■ 46.7186, 1.4251,
7.3757

■ 38.4918, 10.0515,
13.7510

■ 49.7093, -1.0465,
4.8308

■ 36.0505, 13.3569,
15.3255

■ 52.8032, -3.3411,
2.1261

■ 33.7913, 16.8630,
16.5456

■ 55.9901, -5.4758,
-0.7163

■ 31.7357, 20.5311,
17.3618

■ 59.2614, -7.4667,
-3.6783

■ 29.9055, 24.2911,
17.7352

■ 62.6097, -9.3291,
-6.7455

■ 28.3163, 28.0135,
17.7223

■ 66.0286, -11.0769,
-9.9058

■ 27.9490, 28.9148,
17.7283

■ 69.5125, -12.7226,
-13.1495

■ 73.0568, -14.2771,
-16.4683

Harmonies

Analogous

The Analogous color harmony consists of three colors that are next to each other on the color wheel.



43.8426, 7.7548, 6.2327



43.8416, 4.0916, 9.7331



43.8426, -1.1733, 11.2433

Triad

The Triadic color harmony groups three colors that are evenly spaced from another and form a triangle on the color wheel.



43.8426, 4.0900, 9.7338



43.8426, -12.3521, 3.4778



43.8426, 1.9811, -7.8464

Complementary

The Complementary color scheme is a pair of colors which are on the opposite of each other on the color wheel.



43.8416, 4.0916, 9.7331



45.3172, -7.1205, -5.6824

Split Complementary

Split-complementary colors differ from the complementary color scheme. The scheme consists of three colors, the original color and two neighbors of the complement color.



43.8426, -3.4979, -8.8187



43.8416, 4.0916, 9.7331



43.8426, -11.5999, -1.8433

Square

The Square scheme is like the rectangle color scheme, but the four colors are evenly spaced on the color wheel.



43.8426, 4.0900, 9.7338



43.8426, -10.5304, 7.9293



43.8426, -8.4228, -6.5041



43.8426, 6.4959, -3.9902

Rectangle

The Rectangle color scheme consists of four colors that form a rectangle on the color wheel.



43.8416, 4.0916, 9.7331



43.8426, -4.8116, 11.0683



43.8426, -8.4228, -6.5041



43.8426, 0.1842, -8.5395

Sweetspot

The Sweet Spot groups the original color and five complimentary colors.



43.8426, 4.0900, 9.7338



65.7272, -1.1672, 6.6596



41.2753, 14.1232, -4.1529



30.8033, -0.3456, 3.3706



84.2951, -4.4978, 4.5799



32.6403, -1.7416, 1.7734

Same Dimension

The Same Dimension uses a secret algorithm to generate beautiful new colors.



43.8426, 4.0900, 9.7338



55.9287, 7.7712, 14.7298



49.1915, -5.0293, 14.7570



23.8738, -0.3080, 2.5629



26.5419, 27.2365, 16.8318



3.2363, 1.1452, 2.0142

Inverse Universe

The Inverse Universe completely reimagines the original color for something new.



45.3172, -7.1205, -5.6824



58.3028, -10.3406, -10.1471



39.8510, 1.9202, -13.4849



24.1194, -2.1650, 0.0045



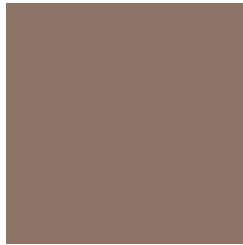
30.1346, -5.0670, -26.7275



3.5702, -1.3851, -1.4725

Previews

White Background



This preview shows how the HunterLab color 43.8416, 4.0916, 9.7331 looks on a white background.

Color Contrast Check

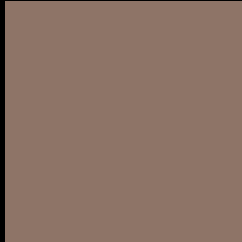
Large Text (above 18pt) WCAG AA ✓ Pass

Any Text WCAG AA × Fail

Large Text (above 18pt) WCAG AAA × Fail

Any Text WCAG AAA × Fail

Black Background



This preview shows how the HunterLab color 43.8416, 4.0916, 9.7331 looks on a black background.

Color Contrast Check

Large Text (above 18pt) WCAG AA ✓ Pass

Any Text WCAG AA ✓ Pass

Large Text (above 18pt) WCAG AAA ✓ Pass

Any Text WCAG AAA × Fail

If you want to check with other color combinations, try the [Color Contrast Checker](#).

HunterLab 43.8416, 4.0916, 9.7331 Background



This preview shows how black text looks on a background with the HunterLab color 43.8416, 4.0916, 9.7331.



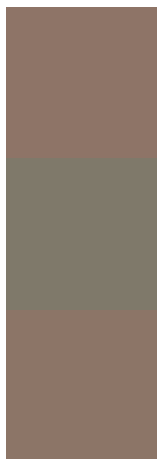
This preview shows how white text looks on a background with the HunterLab color 43.8416, 4.0916,

9.7331.

Color Blindness Simulation

Color vision deficiency is a very complex topic, and I could not describe the different causes any better than Wikipedia does, so if you want to learn more, you should check out their [article about color blindness](#).

Dichromacy



Original Color

43.8416, 4.0916, 9.7331

Protanopia

43.8490, -2.6830, 8.5353

Deuteranopia

43.9059, 2.9490, 9.7781



Tritanopia

43.7546, 8.7722, 2.1652

Trichromacy



Original Color

43.8416, 4.0916, 9.7331

Protanomaly

43.7254, -0.3342, 8.8156

Deuteranomaly

44.0052, 3.2820, 9.8842

Tritanomaly

43.7174, 6.9501, 5.0628

Monochromacy



Original Color

43.8416, 4.0916, 9.7331

Achromatopsia

44.1155, -2.3539, 2.3969

Achromatomaly

43.9748, -0.3834, 5.2219

CSS Examples

Text

The CSS property to change the color of the text to HunterLab 43.8416, 4.0916, 9.7331 is called "color". The color property can be set on classes, ids or directly on the HTML element.

This example shows how text in the color `rgb(142, 116, 103)` looks like.

```
.text, #text, p{  
    color:rgb(142, 116, 103)  
}
```

If you want to add a text shadow in that color use the text-shadow property, you can generate a text shadow directly with our [CSS Text Shadow Generator](#).

Here you see how black text with a 4 pixel rgb(142, 116, 103) colored shadow looks like.

```
.shadow{ text-shadow: 4px 4px 2px rgb(142, 116, 103) }
```

Border

The CSS property to change the border of an element to HunterLab 43.8416, 4.0916, 9.7331 is called "border". The border property can be set on classes, ids or directly on the HTML element.

This example shows the color as border, it can be applied via the CSS property "border" or "border-color".

```
.border, #border, table{ border:4px solid rgb(142, 116, 103) }
```


If only the border color should be changed use the property `border-color`.

```
.border{ border-color:rgb(142, 116, 103) }
```

If you want to add a box shadow in that color use:

Here you see how a box with a 4 pixel `rgb(142, 116, 103)` colored shadow looks like.

```
.boxshadow{ -moz-box-shadow:4px 4px 4px  
4px rgb(142, 116, 103); -webkit-box-  
shadow:4px 4px 4px 4px rgb(142, 116, 103);  
box-shadow:4px 4px 4px 4px rgb(142, 116,  
103) }
```

Background

The CSS property to change the background color of an element to HunterLab 43.8416, 4.0916, 9.7331 is called "background". The background property can be set on classes, ids or directly on the HTML element.

```
.background, #background, body{  
background: rgb(142, 116, 103) }
```

If only the background color should be changed can be used:

```
.background{ background-color: rgb(142,  
116, 103) }
```

This example shows the color as background, it is applied via the CSS property "background".

To optimize and compress your CSS code, you can use our [online CSS compressor and optimizer](#) based on csstidy. If you want to create a linear or radial gradient as background or border, check our [CSS Gradient Generator](#).

Hey! You found this booklet interesting? Support Converting Colors with the new Membership Option!

The pro membership hides all ads, plus gives you double the colors in the color bucket, and more awesome pro features!

[Learn more, Memberships starting at \\$2.50/m!](#)

**Follow me
on Twitter!**

@ConvertingColor