

# Converting Colors

HunterLab(43.8960, 51.8457,  
1.5838)

Have a look what the booklet for  
HunterLab(43.8960, 51.8457,  
1.5838) contains.

<b>HunterLab(43.8777, 52.1208, 1.7326)</b> .....	3
<b><i>Conversions</i></b> .....	4
<b><i>Details</i></b> .....	6
<b><i>Harmonies</i></b> .....	12
<b><i>Previews</i></b> .....	24
<b><i>Color Blindness Simulation</i></b> .....	28
<b><i>CSS Examples</i></b> .....	31

# Color

**HunterLab(43.8777, 52.1208,  
1.7326)**

# Conversions

## Conversions Part 1

<b>Format</b>	<b>Color</b>
Hex	CF477D
RGB	207, 71, 125
RGB Percent	81%, 28%, 49%
CMY	0.1882, 0.7215, 0.5098
CMYK	0.00, 0.66, 0.40, 0.19
HSL	336°, 59%, 55%
HSV	336°, 66%, 81%
XYZ	31.6870, 19.2525, 21.4480
YIQ	117.8200, 63.7220, 45.6260

# Conversions

## Conversions Part 2

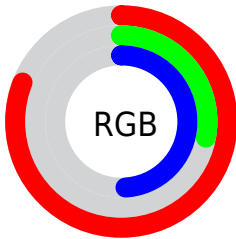
<b>Format</b>	<b>Color</b>
<b>R<sub>YB</sub></b>	207, 71, 125
Decimal	13584253
CIE <sub>Lab</sub>	50.98, 57.98, -0.88
CIE <sub>LCh</sub>	51, 57.988, 359.128
Yxy	19.2536, 0.4377, 0.2660
Android (android.graphics.Color)	4291774333 (0xFFCF477D)
YUV	117.8200, 3.5397, 78.2109
Hunter-Lab	43.8777, 52.1208, 1.7326

# Details

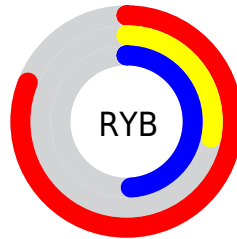
The HunterLab color **43.8777, 52.1208, 1.7326** is a dark color, and the websafe version is hex **CC3366**. The color can be described as dark muted rose. A complement of this color would be **69.4735, -42.7971, 16.3377**, and the grayscale version is **42.4647, -2.2658, 2.3072**.

A 20% lighter version of the original color is **62.9389, 50.8477, 0.4894**, and **26.1107, 46.7138, 1.3812** is the 20% darker color. If you saturate the color by 10%, you get **40.9322, 58.4949, 3.8220**, and if you desaturate by 10%, it is **47.6332, 44.3680, 0.4432**.

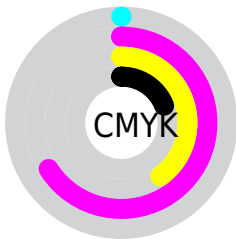
# Distribution



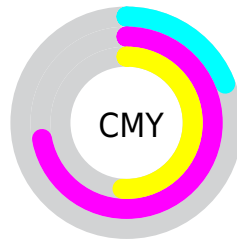
- Red (81%)
- Green (28%)
- Blue (49%)



- Red (81%)
- Yellow (28%)
- Blue (49%)



- Cyan (0%)
- Magenta (66%)
- Yellow (40%)
- Black (19%)



- Cyan (19%)
- Magenta (72%)
- Yellow (51%)

# Brightness & Saturation Gradients

These gradients show how the HunterLab color 43.8777, 52.1208, 1.7326 changes by changing the brightness by 10 percent. The first figure shows a shift by +10% for each color and the second figure -10%.

Similar to the brightness gradients but the following saturation gradients show a change of the HunterLab color 43.8777, 52.1208, 1.7326 by changing the saturation by 10% instead.



43.8777, 52.1208,  
1.7326

43.8777, 52.1208,  
1.7326

157.4309, 66.3051,  
7.5715

34.4291, 50.0628,  
1.2694

64.9324, 55.9535,  
2.7897

25.7761, 47.9673,  
0.8530

76.4458, 57.7167,  
3.3752

18.0015, 45.9566,  
0.4904

88.5691, 59.3775,  
3.9960

11.2186, 44.4170,  
0.1904

101.2732, 60.9400,  
4.6502

3.2981, 87.1314,  
-0.9302

114.5326, 62.4091,  
5.3361

0.0000, INF, NaN

0.0000, NaN, NaN

128.3249, 63.7898,

6.0525

0.0000, NaN, NaN

142.6303, 65.0870,  
6.7980

0.0000, NaN, NaN

■ 43.8777, 52.1208,  
1.7326

■ 43.8777, 52.1208,  
1.7326

■ 40.9322, 58.4949,  
3.8220

■ 47.6332, 44.3680,  
0.4432

■ 38.8523, 62.8940,  
6.6284

■ 52.1007, 35.8397,  
-0.0866

■ 37.6245, 64.9652,  
9.9240

■ 57.1791, 26.9790,  
0.0460

■ 37.2524, 65.4387,  
11.3367

■ 62.7738, 18.0674,  
0.7263

■ 68.8037, 9.2582,  
1.8479

■ 75.2023, 0.6203,  
3.3221

■ 81.9159, -7.8261,  
5.0783

■ 88.9017, -16.0869,  
7.0622

■ 95.3516, -23.0437,  
8.3731

# Harmonies

## Analogous

The Analogous color harmony consists of three colors that are next to each other on the color wheel.



43.8789, 43.1754, -25.6328



43.8777, 52.1208, 1.7326



43.8789, 44.1166, 18.4957

# Triad

The Triadic color harmony groups three colors that are evenly spaced from another and form a triangle on the color wheel.



43.8789, 52.1174, 1.7338



43.8789, -22.1126, 25.7038



43.8789, -23.0699, -52.2879

# Complementary

The Complementary color scheme is a pair of colors which are on the opposite of each other on the color wheel.



43.8777, 52.1208, 1.7326



69.4735, -42.7971, 16.3377

# Split Complementary

Split-complementary colors differ from the complementary color scheme. The scheme consists of three colors, the original color and two neighbors of the complement color.



43.8789, -35.0545, -23.8716



43.8777, 52.1208, 1.7326



43.8789, -34.5884, 19.1269

# Square

The Square scheme is like the rectangle color scheme, but the four colors are evenly spaced on the color wheel.



43.8789, 52.1174, 1.7338



43.8789, -1.6585, 27.2180



43.8789, -38.7903, 3.0332



43.8789, -3.0245, -65.2825



# Rectangle

The Rectangle color scheme consists of four colors that form a rectangle on the color wheel.



43.8777, 52.1208, 1.7326



43.8789, 31.0361, 23.9539



43.8789, -38.7903, 3.0332



43.8789, -28.0076, -43.6791

# Sweetspot

The Sweet Spot groups the original color and five complimentary colors.



43.8789, 52.1174, 1.7338



83.5710, 16.7659, 1.6325



39.6815, 50.1149, -62.8727



37.6651, 9.2272, 0.5742

0.0000, NaN, NaN



46.2646, -2.4686, 2.5136



# Same Dimension

The Same Dimension uses a secret algorithm to generate beautiful new colors.



43.8789, 52.1174, 1.7338



50.5617, 76.7681, 6.2527



44.8951, 41.0587, 20.5086



34.4745, 1.8046, 1.2967



29.5988, 52.0506, 8.5697



7.1086, 12.7084, 0.4489



# Inverse Universe

The Inverse Universe completely reimagines the original color for something new.



43.8789, 52.1174, 1.7338



50.5617, 76.7681, 6.2527



66.4547, -27.6019, -12.2012



34.4745, 1.8046, 1.2967



29.5988, 52.0506, 8.5697

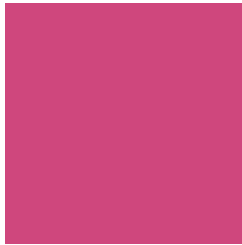


7.1086, 12.7084, 0.4489



# Previews

## White Background



This preview shows how the HunterLab color 43.8777, 52.1208, 1.7326 looks on a white background.

## Color Contrast Check

Large Text (above 18pt) WCAG AA ✓ Pass

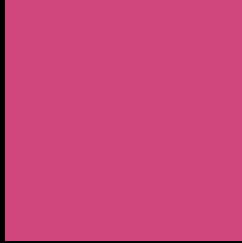
Any Text WCAG AA × Fail

Large Text (above 18pt) WCAG AAA × Fail

Any Text WCAG AAA × Fail



# Black Background



This preview shows how the HunterLab color 43.8777, 52.1208, 1.7326 looks on a black background.

## Color Contrast Check

Large Text (above 18pt) WCAG AA ✓ Pass

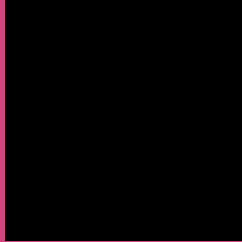
Any Text WCAG AA ✓ Pass

Large Text (above 18pt) WCAG AAA ✓ Pass

Any Text WCAG AAA × Fail

If you want to check with other color combinations, try the [Color Contrast Checker](#).

# HunterLab 43.8777, 52.1208, 1.7326 Background



This preview shows how black text looks on a background with the HunterLab color 43.8777, 52.1208, 1.7326.



This preview shows how white text looks on a background with the HunterLab color 43.8777, 52.1208,



# Color Blindness Simulation

Color vision deficiency is a very complex topic, and I could not describe the different causes any better than Wikipedia does, so if you want to learn more, you should check out their [article about color blindness](#).

## Dichromacy



### Original Color

43.8777, 52.1208, 1.7326

### Protanopia

44.2558, 1.8007, -14.8355

### Deuteranopia

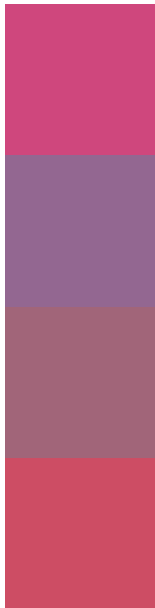
44.0633, 2.8562, 4.1393



## Tritanopia

43.8527, 42.9705, 16.1543

# Trichromacy



## Original Color

43.8777, 52.1208, 1.7326

## Protanomaly

42.3649, 18.5294, -11.0606

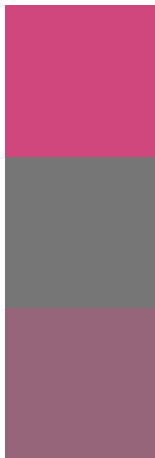
## Deuteranomaly

42.7375, 20.4491, 1.5974

## Tritanomaly

43.8258, 46.0267, 11.5002

# Monochromacy



## Original Color

43.8777, 52.1208, 1.7326

## Achromatopsia

42.5634, -2.2711, 2.3126

## Achromatomaly

41.4390, 16.5728, -0.0570

# CSS Examples

## Text

The CSS property to change the color of the text to HunterLab 43.8777, 52.1208, 1.7326 is called "color". The color property can be set on classes, ids or directly on the HTML element.

This example shows how text in the color `rgb(207, 71, 125)` looks like.

```
.text, #text, p{  
    color:rgb(207, 71, 125)  
}
```

If you want to add a text shadow in that color use the text-shadow property, you can generate a text shadow directly with our [CSS Text Shadow Generator](#).

Here you see how black text with a 4 pixel rgb(207, 71, 125) colored shadow looks like.

```
.shadow{ text-shadow: 4px 4px 2px rgb(207, 71, 125) }
```

## Border

The CSS property to change the border of an element to HunterLab 43.8777, 52.1208, 1.7326 is called "border". The border property can be set on classes, ids or directly on the HTML element.

This example shows the color as border, it can be applied via the CSS property "border" or "border-color".

```
.border, #border, table{ border:4px solid rgb(207, 71, 125) }
```



If only the border color should be changed use the property border-color.

```
.border{ border-color:rgb(207, 71, 125) }
```

If you want to add a box shadow in that color use:

Here you see how a box with a 4 pixel rgb(207, 71, 125) colored shadow looks like.

```
.boxshadow{ -moz-box-shadow:4px 4px 4px  
4px rgb(207, 71, 125); -webkit-box-  
shadow:4px 4px 4px 4px rgb(207, 71, 125);  
box-shadow:4px 4px 4px 4px rgb(207, 71,  
125) }
```

# Background

The CSS property to change the background color of an element to HunterLab 43.8777, 52.1208, 1.7326 is called "background". The background property can be set on classes, ids or directly on the HTML element.

```
.background, #background, body{  
background: rgb(207, 71, 125) }
```

If only the background color should be changed can be used:

```
.background{ background-color: rgb(207, 71,  
125) }
```

This example shows the color as background, it is applied via the CSS property "background".

To optimize and compress your CSS code, you can use our [online CSS compressor and optimizer](#) based on csstidy. If you want to create a linear or radial gradient as background or border, check our [CSS Gradient Generator](#).

Hey! You found this booklet interesting? Support Converting Colors with the new Membership Option!

The pro membership hides all ads, plus gives you double the colors in the color bucket, and more awesome pro features!

**[Learn more, Memberships starting at \\$2.50/m!](#)**

**Follow me  
on Twitter!**

@ConvertingColor