

Converting Colors

HunterLab(44.1055, 8.4656,
13.7148)

Have a look what the booklet for
HunterLab(44.1055, 8.4656,
13.7148) contains.

HunterLab(44.1055, 8.4656, 13.7148)	3
<i>Conversions</i>	4
<i>Details</i>	6
<i>Harmonies</i>	12
<i>Previews</i>	24
<i>Color Blindness Simulation</i>	28
<i>CSS Examples</i>	31

Color

**HunterLab(44.1055, 8.4656,
13.7148)**

Conversions

Conversions Part 1

Format	Color
Hex	9A715C
RGB	154, 113, 92
RGB Percent	60%, 44%, 36%
CMY	0.3961, 0.5568, 0.6392
CMYK	0.00, 0.27, 0.40, 0.40
HSL	20°, 25%, 48%
HSV	20°, 40%, 60%
XYZ	21.1633, 19.4530, 12.7645
YIQ	122.8650, 31.1770, 2.1610

Conversions

Conversions Part 2

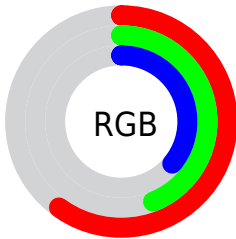
Format	Color
R_{YB}	154, 124, 92
Decimal	10121564
CIE _{Lab}	51.21, 13.34, 18.00
CIE _{LCh}	51, 22.405, 53.461
Yxy	19.4539, 0.3965, 0.3644
Android (android.graphics.Color)	4288311644 (0xFF9A715C)
YUV	122.8650, -15.2164, 27.3054
Hunter-Lab	44.1055, 8.4656, 13.7148

Details

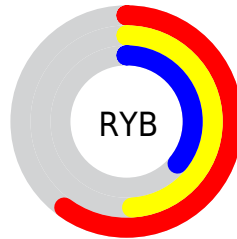
The HunterLab color **44.1055, 8.4656, 13.7148** is a dark color, and the websafe version is hex **996666**. A complement of this color would be **46.2413, -8.9935, -10.8625**, and the grayscale version is **44.5020, -2.3745, 2.4179**.

A 20% lighter version of the original color is **65.2418, 8.7159, 17.0977**, and **25.9703, 7.8215, 10.2387** is the 20% darker color. If you saturate the color by 10%, you get **41.3100, 11.8993, 15.6920**, and if you desaturate by 10%, it is **47.0663, 5.2699, 11.4322**.

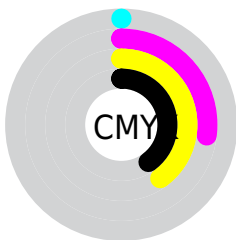
Distribution



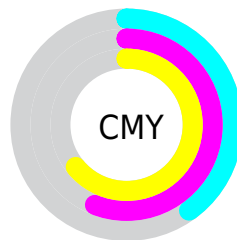
- Red (60%)
- Green (44%)
- Blue (36%)



- Red (60%)
- Yellow (49%)
- Blue (36%)



- Cyan (0%)
- Magenta (27%)
- Yellow (40%)
- Black (40%)



- Cyan (40%)
- Magenta (56%)
- Yellow (64%)

Brightness & Saturation Gradients

These gradients show how the HunterLab color 44.1055, 8.4656, 13.7148 changes by changing the brightness by 10 percent. The first figure shows a shift by +10% for each color and the second figure -10%.

Similar to the brightness gradients but the following saturation gradients show a change of the HunterLab color 44.1055, 8.4656, 13.7148 by changing the saturation by 10% instead.

■ 44.1055, 8.4656,
13.7148

■ 44.1055, 8.4656,
13.7148

157.7793, 7.6942,
27.5639

■ 34.6391, 8.2114,
12.0296

■ 65.1918, 8.7149,
16.9261

■ 25.9669, 7.8563,
10.2565

■ 76.7196, 8.7330,
18.4814

■ 18.1708, 7.3779,
8.3514

■ 88.8568, 8.6890,
20.0162

■ 11.3633, 6.7464,
7.4679

■ 101.5740, 8.5881,
21.5371

■ 3.6661, 15.6592,
2.5663

114.8459, 8.4348,
23.0489

0.0000, NaN, NaN

0.0000, NaN, NaN

128.6503, 8.2326,

24.5555

0.0000, NaN, NaN

142.9674, 7.9849,
26.0597

0.0000, NaN, NaN

■ 44.1055, 8.4656,
13.7148

■ 44.1055, 8.4656,
13.7148

■ 41.3100, 11.8993,
15.6920

■ 47.0663, 5.2699,
11.4322

■ 38.6968, 15.5727,
17.3095

■ 50.1713, 2.3101,
8.8883

■ 36.2893, 19.4608,
18.5125

■ 53.4062, -0.4306,
6.1226

■ 34.1113, 23.5126,
19.2490

■ 56.7573, -2.9698,
3.1674

■ 32.1861, 27.6394,
19.4842

■ 60.2134, -5.3264,
0.0491

■ 30.5634, 31.5608,
19.3855

■ 63.7644, -7.5186,
-3.2106

■ 67.4020, -9.5638,
-6.5944

■ 71.1188, -11.4778,
-10.0877

■ 74.9085, -13.2747,
-13.6787

Harmonies

Analogous

The Analogous color harmony consists of three colors that are next to each other on the color wheel.



44.1066, 14.7266, 8.4827



44.1055, 8.4656, 13.7148



44.1066, -0.3612, 15.8587

Triad

The Triadic color harmony groups three colors that are evenly spaced from another and form a triangle on the color wheel.



44.1066, 8.4637, 13.7154



44.1066, -18.3126, 4.2405



44.1066, 4.7710, -15.5947

Complementary

The Complementary color scheme is a pair of colors which are on the opposite of each other on the color wheel.



44.1055, 8.4656, 13.7148



46.2413, -8.9935, -10.8625

Split Complementary

Split-complementary colors differ from the complementary color scheme. The scheme consists of three colors, the original color and two neighbors of the complement color.



44.1066, -4.3155, -17.3601



44.1055, 8.4656, 13.7148



44.1066, -17.1785, -4.6932

Square

The Square scheme is like the rectangle color scheme, but the four colors are evenly spaced on the color wheel.



44.1066, 8.4637, 13.7154



44.1066, -15.4557, 11.1451



44.1066, -12.2234, -13.0361



44.1066, 12.4776, -8.6070

Rectangle

The Rectangle color scheme consists of four colors that form a rectangle on the color wheel.



44.1055, 8.4656, 13.7148



44.1066, -6.3248, 15.6315



44.1066, -12.2234, -13.0361



44.1066, 1.7587, -16.8698

Sweetspot

The Sweet Spot groups the original color and five complimentary colors.



44.1066, 8.4637, 13.7154



71.1043, 0.1292, 9.0123



40.2829, 24.3775, -7.5898



33.5797, 0.2663, 4.5021



88.7363, -4.7347, 4.8212



36.4511, -1.9449, 1.9805

Same Dimension

The Same Dimension uses a secret algorithm to generate beautiful new colors.



44.1066, 8.4637, 13.7154



56.1533, 15.4192, 20.8301



52.4294, -6.0206, 20.7510



25.5885, -0.3349, 2.7726



27.6973, 28.1859, 17.5604



4.2124, 1.4932, 2.6218

Inverse Universe

The Inverse Universe completely reimagines the original color for something new.



46.2413, -8.9935, -10.8625



59.5721, -12.7919, -18.7892



37.6523, 5.3652, -24.8454



25.8338, -2.3130, -0.0242



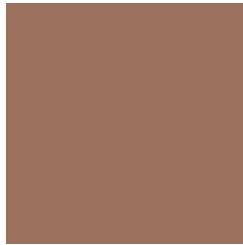
31.1185, -4.8772, -28.3669



4.5982, -1.7366, -1.9984

Previews

White Background



This preview shows how the HunterLab color 44.1055, 8.4656, 13.7148 looks on a white background.

Color Contrast Check

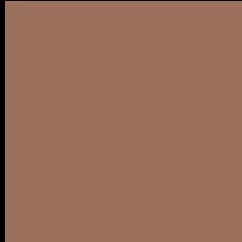
Large Text (above 18pt) WCAG AA ✓ Pass

Any Text WCAG AA × Fail

Large Text (above 18pt) WCAG AAA × Fail

Any Text WCAG AAA × Fail

Black Background



This preview shows how the HunterLab color 44.1055, 8.4656, 13.7148 looks on a black background.

Color Contrast Check

Large Text (above 18pt) WCAG AA ✓ Pass

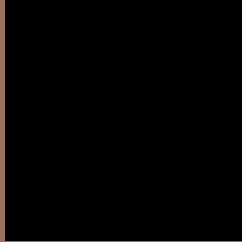
Any Text WCAG AA ✓ Pass

Large Text (above 18pt) WCAG AAA ✓ Pass

Any Text WCAG AAA × Fail

If you want to check with other color combinations, try the [Color Contrast Checker](#).

HunterLab 44.1055, 8.4656, 13.7148 Background



This preview shows how black text looks on a background with the HunterLab color 44.1055, 8.4656, 13.7148.



This preview shows how white text looks on a background with the HunterLab color 44.1055, 8.4656,

Color Blindness Simulation

Color vision deficiency is a very complex topic, and I could not describe the different causes any better than Wikipedia does, so if you want to learn more, you should check out their [article about color blindness](#).

Dichromacy



Original Color

44.1055, 8.4656, 13.7148

Protanopia

44.1695, -3.4355, 12.3022

Deuteranopia

44.0536, 2.9358, 13.8763



Tritanopia

43.9468, 14.2747, 4.2062

Trichromacy



Original Color

44.1055, 8.4656, 13.7148

Protanomaly

44.1688, 0.7417, 12.6967

Deuteranomaly

44.2063, 4.7955, 14.0490

Tritanomaly

43.8458, 12.2386, 7.6677

Monochromacy



Original Color

44.1055, 8.4656, 13.7148

Achromatopsia

44.5050, -2.3747, 2.4180

Achromatomaly

44.0816, 1.2235, 6.5663

CSS Examples

Text

The CSS property to change the color of the text to HunterLab 44.1055, 8.4656, 13.7148 is called "color". The color property can be set on classes, ids or directly on the HTML element.

This example shows how text in the color `rgb(154, 113, 92)` looks like.

```
.text, #text, p{  
    color:rgb(154, 113, 92)  
}
```

If you want to add a text shadow in that color use the text-shadow property, you can generate a text shadow directly with our [CSS Text Shadow Generator](#).

Here you see how black text with a 4 pixel rgb(154, 113, 92) colored shadow looks like.

```
.shadow{ text-shadow: 4px 4px 2px rgb(154, 113, 92) }
```

Border

The CSS property to change the border of an element to HunterLab 44.1055, 8.4656, 13.7148 is called "border". The border property can be set on classes, ids or directly on the HTML element.

This example shows the color as border, it can be applied via the CSS property "border" or "border-color".

```
.border, #border, table{ border:4px solid rgb(154, 113, 92) }
```


If only the border color should be changed use the property `border-color`.

```
.border{ border-color:rgb(154, 113, 92) }
```

If you want to add a box shadow in that color use:

Here you see how a box with a 4 pixel `rgb(154, 113, 92)` colored shadow looks like.

```
.boxshadow{ -moz-box-shadow:4px 4px 4px  
4px rgb(154, 113, 92); -webkit-box-  
shadow:4px 4px 4px 4px rgb(154, 113, 92);  
box-shadow:4px 4px 4px 4px rgb(154, 113,  
92) }
```

Background

The CSS property to change the background color of an element to HunterLab 44.1055, 8.4656, 13.7148 is called "background". The background property can be set on classes, ids or directly on the HTML element.

```
.background, #background, body{  
background: rgb(154, 113, 92) }
```

If only the background color should be changed can be used:

```
.background{ background-color: rgb(154,  
113, 92) }
```

This example shows the color as background, it is applied via the CSS property "background".

To optimize and compress your CSS code, you can use our [online CSS compressor and optimizer](#) based on csstidy. If you want to create a linear or radial gradient as background or border, check our [CSS Gradient Generator](#).

Hey! You found this booklet interesting? Support Converting Colors with the new Membership Option!

The pro membership hides all ads, plus gives you double the colors in the color bucket, and more awesome pro features!

[Learn more, Memberships starting at \\$2.50/m!](#)

**Follow me
on Twitter!**

@ConvertingColor